

Lewis

MH 5747-266
Remove and Replace MH Frame & Cover
409 S. Bluff
Approx MH depth = 11.3 ft

MH 5747-265

79'

235'

420

MH 5747-263
Remove and Replace Manhole Frame & Cover
420 S. Bluff
Approx MH depth = 12.5 ft

Bluff

Fountain

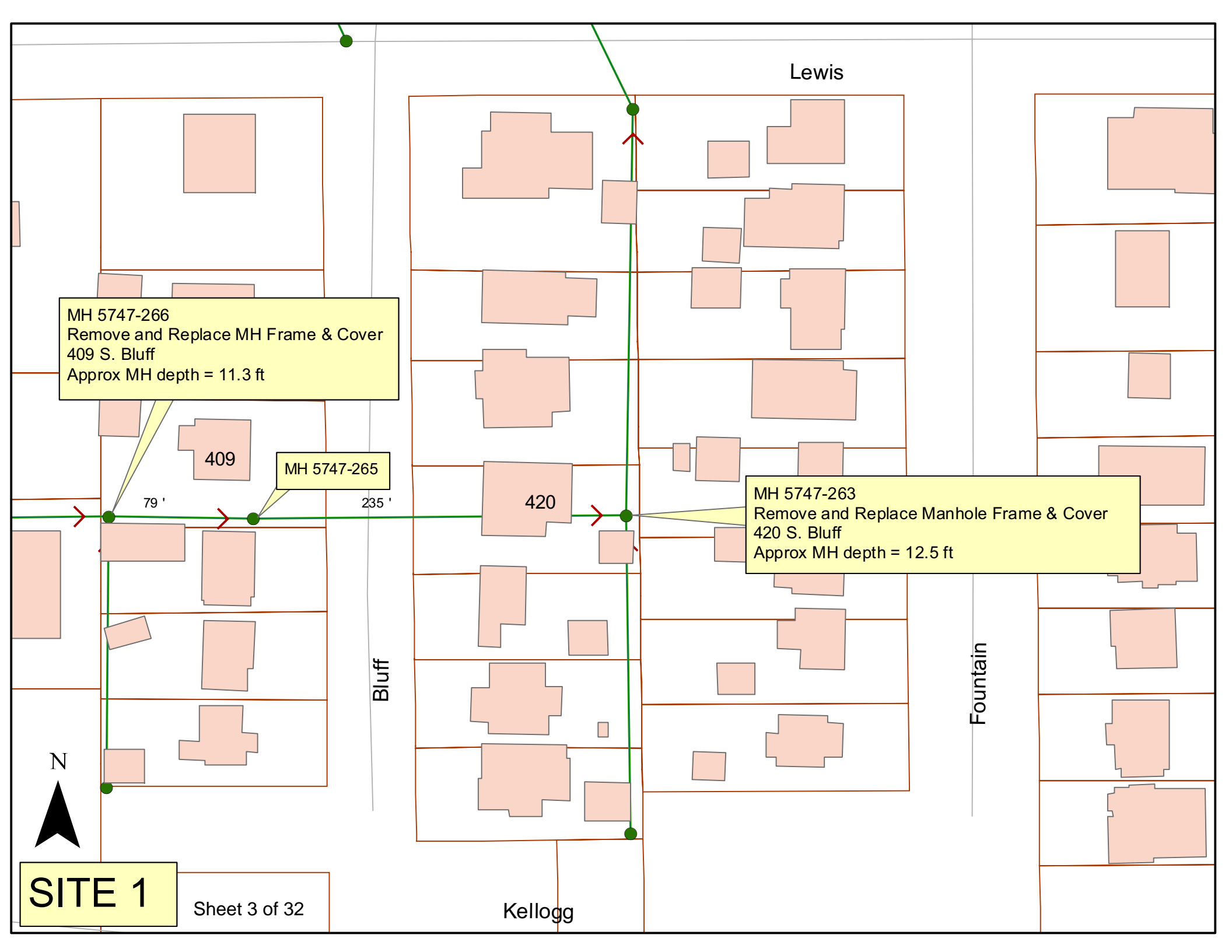
N

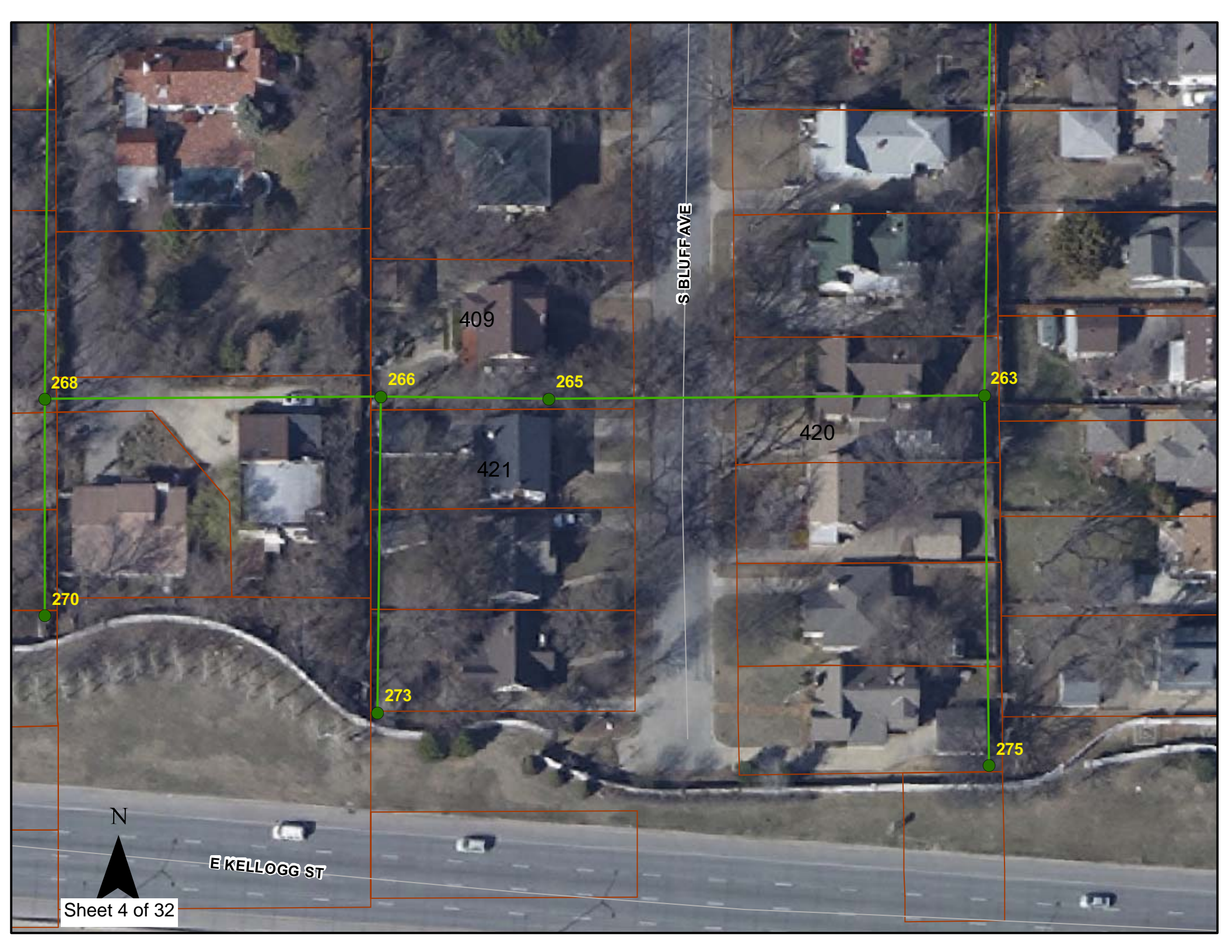


SITE 1

Sheet 3 of 32

Kellogg





S BLUFF AVE

409

420

421

268

266

265

263

270

273

275

N

E KELLOGG ST

Central Ave.

MH 5747-059
Adjust Manhole to Grade (6" to 12")
(includes new manhole frame & cover)
Approx MH depth = 12.0 ft

Remove 236 lf of 8" Pipe
Install 236 lf of 8" Pipe

MH 5747-060
Remove and Replace
Manhole Frame & Cover
Approx MH depth = 8.8 ft

4515 E.
Central

4525 E.
Central

236'

66'

442 N.
Terrace

435 N.
Pershing

Terrace

Pershing

Remove approx. 80 lf of asphalt (remove asphalt for the width of the alley, and only for the length necessary for pipe replacement and manhole work. Restore the disturbed area with seeding. Costs shall be subsidiary to Site Clearing and Site Restoration.

Estimated 30 lf of Silt Fence
Estimated 3 Service Reconnections (4")
Estimated 1 Service Reconnection (6")

SITE 2

Sheet 5 of 32



E CENTRAL AVE

4525 E. Central

4515 E. Central

414

058

059

060

542

N TERRACE DR

N PERSHING AVE

N



Television Inspection Master Report

8/31/2011

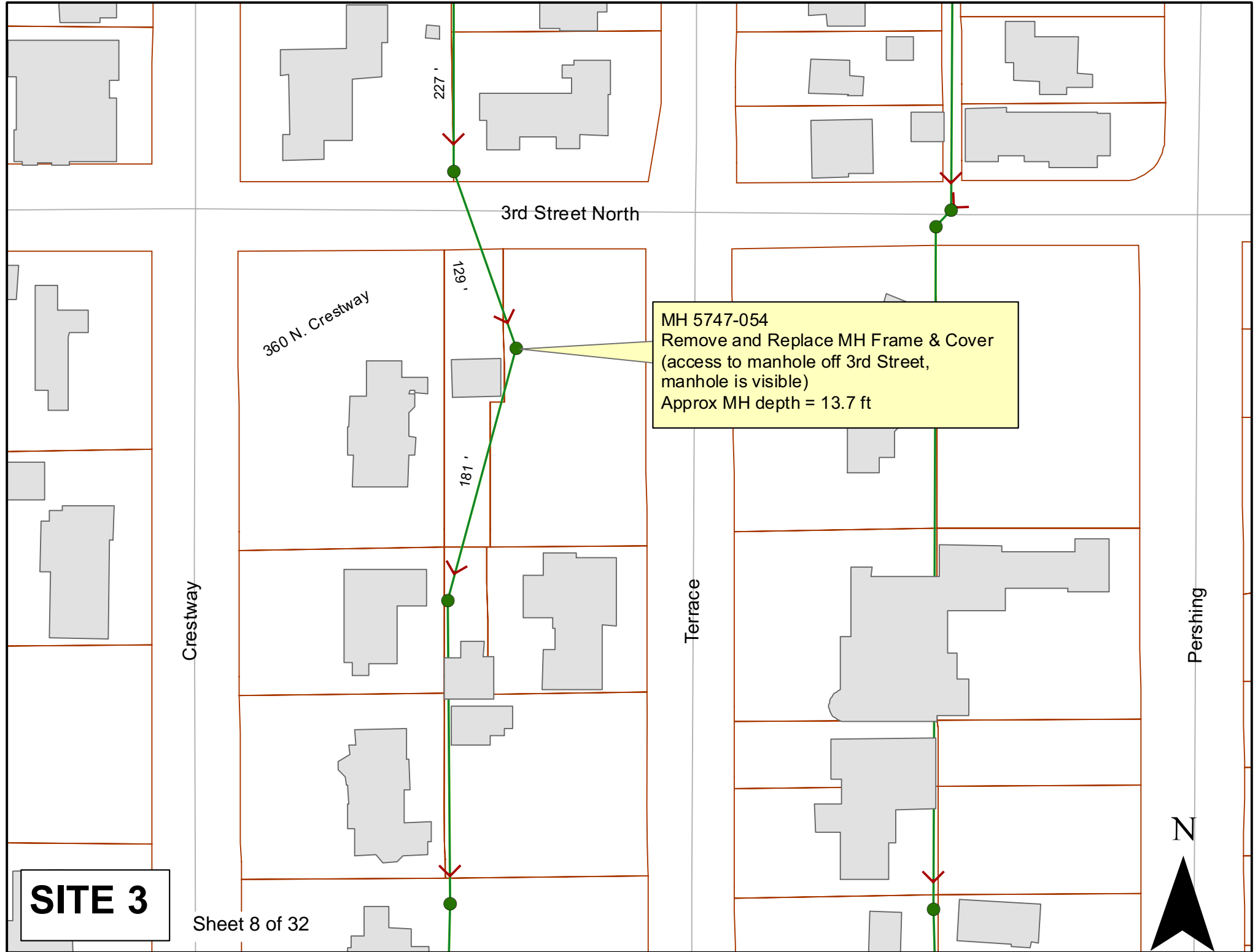
3:16 PM

US Structure: 5747-060 437 N PERSHING ST Date Insp: 3/4/2011 Basin: EC01G
 DS Structure: 5747-059 442 N TERRACE ST Dir Televised: Upstream To Downstream

Pipe Information

Project No. : C-234 Dia/Ht: 8 Material: VCP Length: 235.2 Slope: 0.001

| Obs. # | VTR Counter | Distance | Location | Description | Rating | Obsrvd (gpm) | Ratings | | | Remain (gpm) |
|--------|-------------|----------|-------------------------------|---|--------|--------------|--|--------|-------|--------------|
| | | | | | | | Est. (gpm) | Struct | Clean | |
| 1 | | 0.0 | | 5747-060 US Manhole | | | <i>(pipe from east should be sealed off already)</i> | | | |
| 2 | | 27.4 | 437 N PERSHING | 4" Wye Service | 2 | 0.000 | 0 | 0 | 0.000 | |
| 3 | | 30.1 | 4525 E CENTRAL | 4" Wye Service | 1 | 0.000 | 0 | 0 | 0.000 | |
| 4 | | 33.6 | | Crack-Radial | 1 | 0.001 | 1 | 0 | 0.001 | |
| 5 | | 49.2 | | Broken Pipe | 1 | 0.004 | 30 | 0 | 0.004 | |
| 6 | | 52.9 | | Sealed Off Wye | 1 | 0.000 | 0 | 0 | 0.000 | |
| 7 | | 53.5 | | Crack-Horizontal | 1 | 0.001 | 1 | 0 | 0.001 | |
| 8 | | 55.6 | | Sealed Off Wye / full of roots | 4 | 0.000 | 0 | 0 | 0.000 | |
| 9 | | 57.3 | | Crack-Horizontal | 3 | 0.004 | 5 | 0 | 0.004 | |
| 10 | | 59.4 | | Crack-Radial | 2 | 0.002 | 2 | 0 | 0.002 | |
| 11 | | 70.0 | 437 N PERSHING | Crown / 4" Break-In Conn / Roots | 4 | 0.008 | 60 | 0 | 0.008 | |
| 12 | | 79.3 | Mineral deposits / seal leaks | Sealed Off Wye | 1 | 0.000 | 0 | 0 | 0.000 | |
| 13 | | 81.8 | Mineral deposits / seal leaks | Sealed Off Wye | 1 | 0.000 | 0 | 0 | 0.000 | |
| 14 | | 105.2 | Mineral deposits / seal leaks | Sealed Off Wye | 1 | 0.000 | 0 | 0 | 0.000 | |
| 15 | | 107.8 | Mineral deposits / seal leaks | Sealed Off Wye | 1 | 0.000 | 0 | 0 | 0.000 | |
| 16 | | 133.8 | Small hole in side of pipe | Broken Pipe | 5 | 0.060 | 100 | 0 | 0.060 | |
| 17 | | 136.1 | | Begin Sag | 4 | 0.000 | 10 | 0 | 0.000 | |
| 18 | | 136.4 | | ¾ tile Sag | 4 | 0.000 | 10 | 0 | 0.000 | |
| 19 | | 138.6 | Mineral deposits / seal leaks | Sealed Off Wye | 1 | 0.000 | 0 | 0 | 0.000 | |
| 20 | | 164.9 | Mineral deposits / seal leaks | Sealed Off Wye | 1 | 0.000 | 0 | 0 | 0.000 | |
| 21 | | 166.1 | | (water was over the lens) Sag | 1 | 0.000 | 1 | 0 | 0.000 | |
| 22 | | 166.1 | | End Sag | 1 | 0.000 | 1 | 0 | 0.000 | |
| 23 | | 167.7 | | Sealed Off Wye | 1 | 0.000 | 0 | 0 | 0.000 | |
| 24 | | 170.6 | | Crack-Horizontal | 3 | 0.004 | 5 | 0 | 0.004 | |
| 25 | | 171.9 | | Begin Sag | 1 | 0.000 | 1 | 0 | 0.000 | |
| 26 | | 173.2 | | Camera Submerged /Sag | 5 | 0.000 | 25 | 0 | 0.000 | |
| 27 | | 186.2 | | Camera Emerged /Sag | 1 | 0.000 | 1 | 0 | 0.000 | |
| 28 | | 186.3 | | End Sag | 1 | 0.000 | 1 | 0 | 0.000 | |
| 29 | | 191.2 | | Sealed Off Wye | 1 | 0.000 | 0 | 0 | 0.000 | |
| 30 | | 193.1 | 4515 E CENTRAL | 4" Break-In Conn | 1 | 0.001 | 0 | 0 | 0.001 | |
| 31 | | 199.0 | | Begin Sag | 4 | 0.000 | 10 | 0 | 0.000 | |
| 32 | | 206.9 | | (water was over the lens) Sag | 1 | 0.000 | 1 | 0 | 0.000 | |
| 33 | | 206.9 | | End Sag | 1 | 0.000 | 1 | 0 | 0.000 | |
| 34 | | 217.4 | | Sealed Off Wye | 1 | 0.000 | 0 | 0 | 0.000 | |
| 35 | | 219.9 | | Sealed Off Wye | 1 | 0.000 | 0 | 0 | 0.000 | |
| 36 | | 223.8 | | Crack-Radial | 2 | 0.002 | 2 | 0 | 0.002 | |
| 37 | | 226.1 | | Crack-Radial | 2 | 0.002 | 2 | 0 | 0.002 | |
| 38 | | 235.7 | | 5747-059 DS Manhole | 2 | | | | | |
| | | | | (poor grade / pipe had mineral deposits at some joints) | | | | | | |



227'

3rd Street North

360 N. Crestway

129'

MH 5747-054
Remove and Replace MH Frame & Cover
(access to manhole off 3rd Street,
manhole is visible)
Approx MH depth = 13.7 ft

181'

Crestway

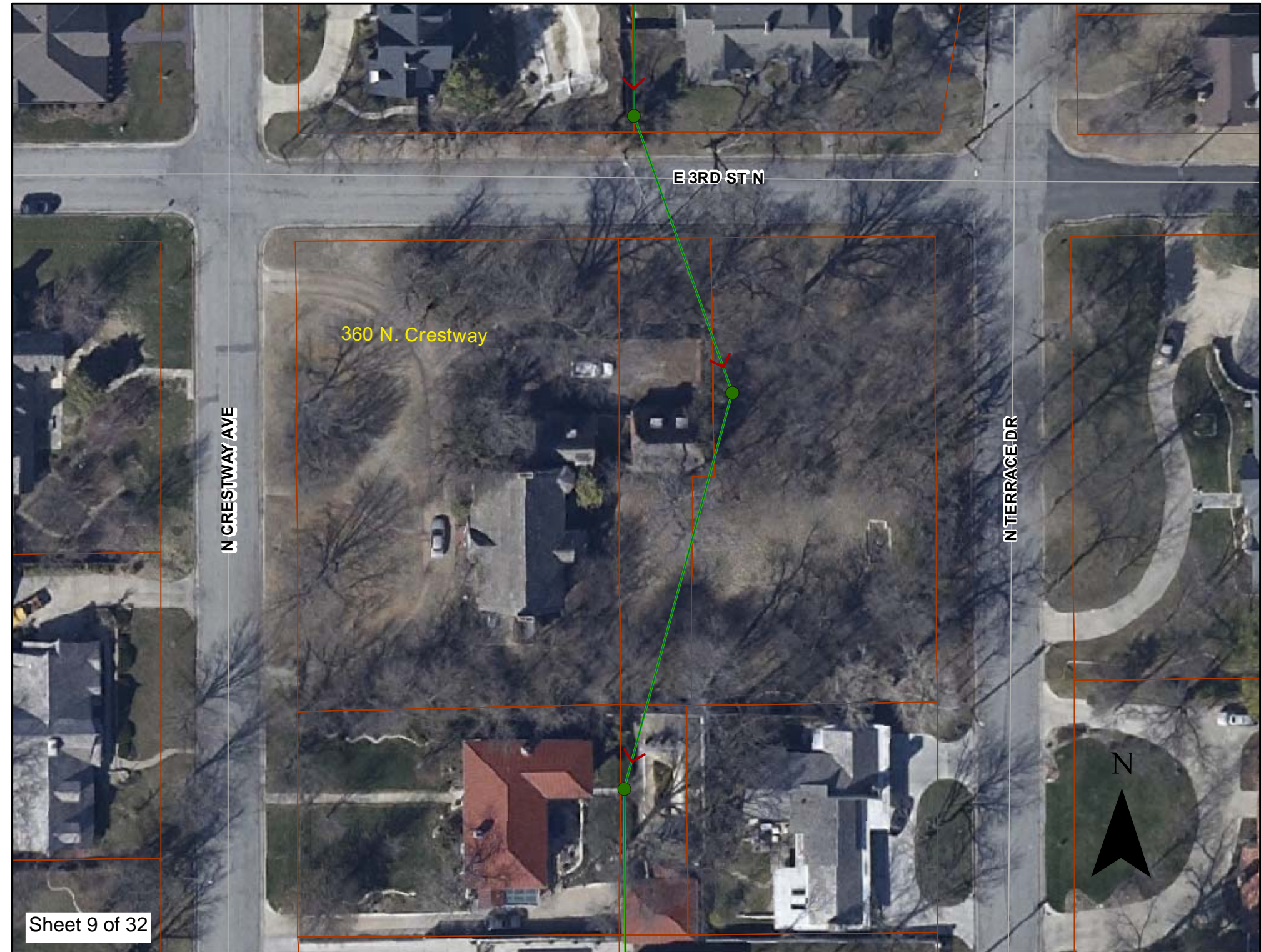
Terrace

Pershing

SITE 3

Sheet 8 of 32





E 3RD ST N

360 N. Crestway

N CRESTWAY AVE

N TERRACE DR

