

MH 5747-054
Remove and Replace MH Frame & Cover
303 S. Fountain (visible in yard)
Approx MH depth = 12.2 ft

MH 5747-179
Approx MH depth = 9.7 ft

MH 5747-177
Approx MH depth = 11.4 ft

MH 5747-184
Approx MH depth = 10.9 ft

MH 5747-186
Approx MH depth = 6.2 ft

Replace Service Connection
for 250 S. Fountain (4")
Located 175 lf west of MH 5747-179.
Pavement removal and replacement
shall be subsidiary to the bid item.

Replace Service Connection
for 4311 E. Waterman (4")
Located 87 lf west of MH 5747-186.
Pavement removal and replacement
shall be subsidiary to the bid item.

Fountain

Waterman

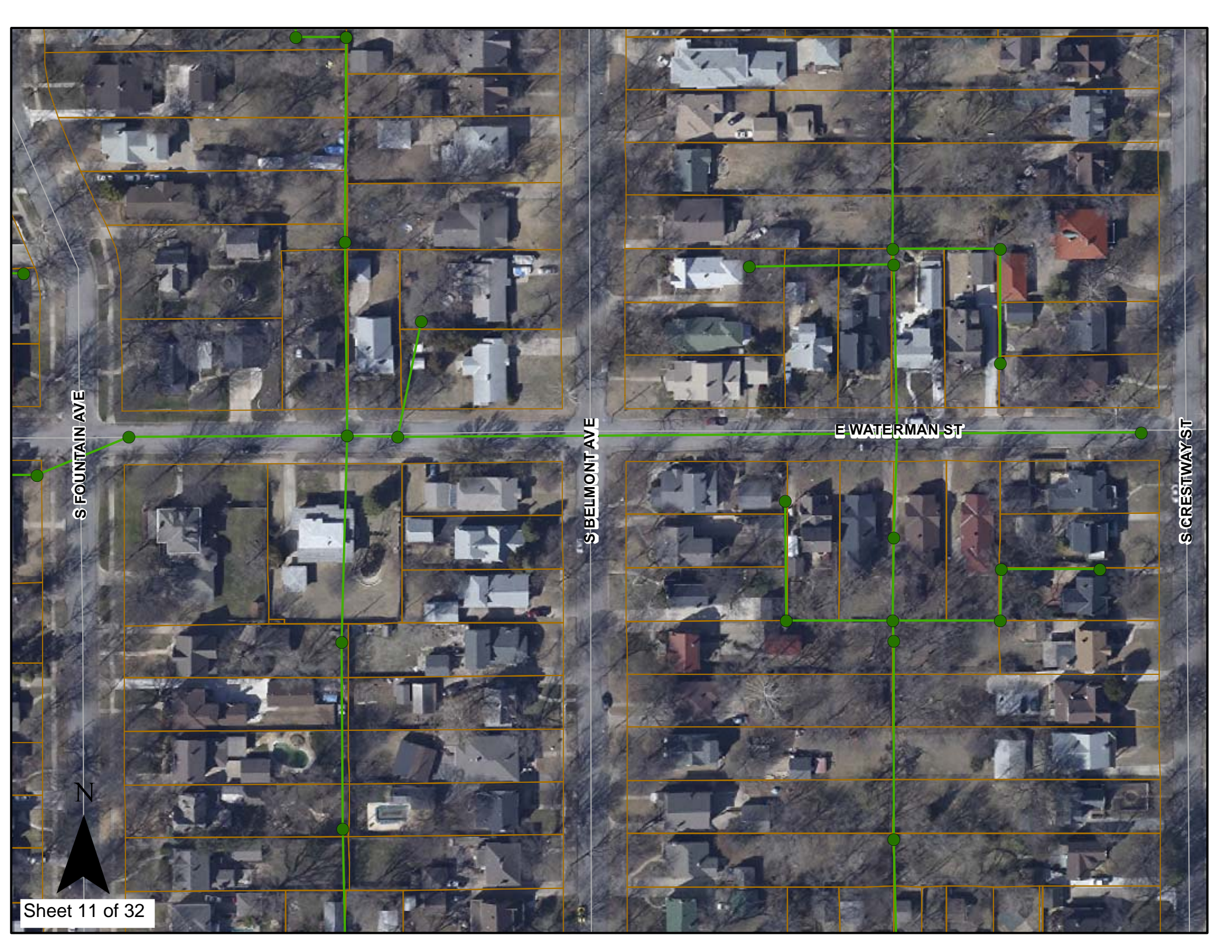
Belmont

Crestway



SITE 4

Sheet 10 of 32



S FOUNTAIN AVE

S BELMONT AVE

E WATERMAN ST

S CRESTWAY ST

N

Video Inspection Master Report

3/20/2012

8:11 AM

US Structure: **5747-186** 4341 E WATERMAN ST Date Insp: 2/21/2012 Basin: EC01G
 DS Structure: **5747-184** 4319 E WATERMAN ST Dir Televised: Upstream To Downstream

Pipe Information

Project No. : C-093 Dia: 8 Material: VCP Length: 230.1 Slope: 0.034 DVD #0701

Obs. #	VTR Counter	Distance	Location	Description	Rating	Obsrvd (gpm)	Ratings			Remain (gpm)	
							Est. (gpm)	Struct	Clean		
1		0.0		5747-186 US Manhole	1						
2		0.0		Broken Pipe	5						
3		18.2		Sealed Off Wye	1						
4		20.7		Sealed Off Wye	1						
5		43.5		Sealed Off Wye	1						
6		46.1		Sealed Off Wye	1						
7		64.5		Roots	2						
8		67.3	251 S CRESTWAY	Wye Service	5						
9		71.5		Sealed Off Wye	1						
10		79.9		Crack-Radial	2						
11		85.2		Crack-Radial	2						
12		87.3	4311 E WATERMAN	S. Wye Service	5						
				Tap is broken off the main. Pipe missing outside of main / cavity. Tap is active.							
										Should be able to replace the tap without a point repair to the 8" pipe.	
14		94.3		Sealed Off Wye	1						
15		96.9		Sealed Off Wye	1						
16		106.0		Observation Hole	1						
17		117.3		Sealed Off Wye	1						
18		119.7		Sealed Off Wye	1						
19		142.6		Sealed Off Wye	1						
20		145.0		Sealed Off Wye	1						
21		168.0		Sealed Off Wye	1						
22		170.4		Sealed Off Wye	1						
23		186.6		Roots	1						
24		189.1		Roots	1						
25		193.4		Sealed Off Wye	1						
26		194.2		Roots	1						
27		195.8		Sealed Off Wye	1						
28		209.4		Roots	1						
29		211.9		Roots	2						
30		214.5		Roots	1						
31		217.0		Roots	2						
32		218.6		Sealed Off Wye	1						
33		219.6		Roots	3						
34		221.2		Sealed Off Wye	1						
35		222.0		Roots	3						
36		223.6		Roots	1						
37		224.8		Mat'l Chngs to PVC	1						
38		228.5		5747-184 DS Manhole	1						



Video Inspection Master Report


6/19/2012

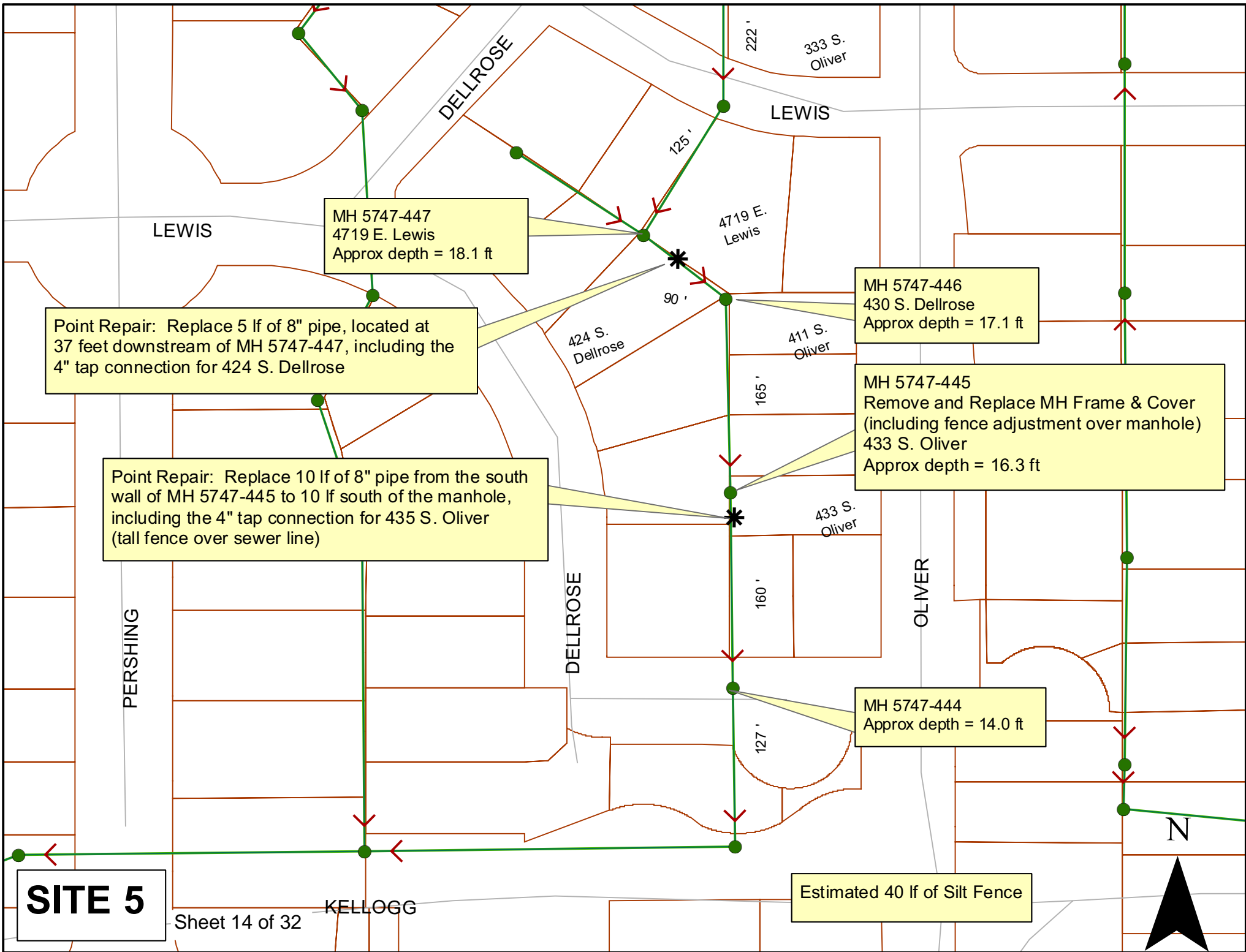
2:19 PM

US Structure: **5747-179** 4023 E WATERMAN ST Date Insp: 2/13/2012 Basin: EC01G
 DS Structure: **5747-177** 250 S FOUNTAIN AVE Dir Televised: Upstream To Downstream

Pipe Information

Shape: Round Length Status: Project No. : C-092
 Dia/Ht: 8 Material: VCP Index:
 Length: 205.3 Slope: 0.400 Surface: Paved Only

Obs. #	VTR Counter	Distance	Location	Description	Rating	Obsrvd (gpm)	Ratings		Remain (gpm)	
							Est. (gpm)	Struct Clean		
1		0.0		5747-179 US Manhole	1					
2		20.2		Sealed Off Wye	1					
3		22.7		Sealed Off Wye	1					
4		45.7		Sealed Off Wye	1					
5		48.2		Sealed Off Wye	2					
6		71.2		Sealed Off Wye	1					
7		74.0		Sealed Off Wye	3					
8		91.8		Observation Hole	1					
9		96.8		Sealed Off Wye	1					
10		99.5		Sealed Off Wye	1					
11		122.3		Sealed Off Wye	1					
12		125.1		Sealed Off Wye	1					
13		148.1		Sealed Off Wye	1					
14		150.6		Break-In Conn	1					
4009 EAST WATERMAN										
	15	175.0		Break-In Conn	4					
250 SOUTH FOUNTAIN / Tap is broken off the main and creating a cavity. Missing pipe outside of the main. Active.										
Should be able to replace the tap without a point repair to the 8" pipe.										
16		176.5		Sealed Off Wye	1					
17		199.5		Sealed Off Wye	1					
18		202.2		Sealed Off Wye	1					
19		205.7		Crack-Radial	3					
20		207.6		5747-177 DS Manhole	1					



MH 5747-447
 4719 E. Lewis
 Approx depth = 18.1 ft

Point Repair: Replace 5 lf of 8" pipe, located at 37 feet downstream of MH 5747-447, including the 4" tap connection for 424 S. Dellrose

Point Repair: Replace 10 lf of 8" pipe from the south wall of MH 5747-445 to 10 lf south of the manhole, including the 4" tap connection for 435 S. Oliver (tall fence over sewer line)

MH 5747-446
 430 S. Dellrose
 Approx depth = 17.1 ft

MH 5747-445
 Remove and Replace MH Frame & Cover (including fence adjustment over manhole)
 433 S. Oliver
 Approx depth = 16.3 ft

MH 5747-444
 Approx depth = 14.0 ft

SITE 5

Sheet 14 of 32

Estimated 40 lf of Silt Fence





Television Inspection Master Report

5/13/2009

7:50 AM

US Structure: 5747-447 414 DELLROSE ST Date Insp: 12/14/2007 Basin: E04C
 DS Structure: 5747-446 430 DELLROSE Dir Televised: Upstream To Downstream

Dia: 8 Material: VCP Length: 88.7 Slope: 0.400 DVD #0347

Obs. #	VTR Counter	Distance	Location	Description	Rating	Obsrvd (gpm)	Ratings		Remain (gpm)	
							Struct	Clean		
1		0.0	US Manhole	5747-447 (access from 4719 E. Lewis)	1					
2		6.0		Sealed Off Wye South	1	0.000	0	0	0.000	
3		8.1		Sealed Off Wye North	1	0.000	0	0	0.000	
4		10.2	Joint	Offset	3	0.010	20	0	0.010	
5		26.3		Sealed Off Wye South	1	0.000	0	0	0.000	
6		28.3	Lower Right	Crack-Radial	3	0.004	5	0	0.004	
7		29.3		Sealed Off Wye North	1	0.000	0	0	0.000	
8		33.3	Upper Right	Broken Pipe	2	0.008	44	0	0.008	
9		36.0	Upper Right	Broken Pipe	3	0.010	60	0	0.010	
10		37.1	South	Extended Tap	5	0.002	400	0	0.002	
				424 S DELLROSE / dropped into the main	4" Break In Connection	Comment: PIPE MISSING / needs point repair				
11		49.3		Sealed Off Wye South	1	0.000	0	0	0.000	
12		51.5		Sealed Off Wye North	2	0.002	0	0	0.002	
13		58.5	Crown	Broken Pipe	2	0.008	44	0	0.008	
14		61.3	Crown	Broken Pipe	2	0.008	44	0	0.008	
15		63.9	Crown	Broken Pipe	2	0.008	44	0	0.008	
16		69.5		Sealed Off Wye South	1	0.000	0	0	0.000	
17		71.2	Upper Right	Debris / tile	5	0.000	0	75	0.000	
18		72.8		Sealed Off Wye North	1	0.000	0	0	0.000	
19		88.0	North	Break-In Conn	1	0.001	0	0	0.001	
				4719 E LEWIS ST	4" VCP MH Stub					
20		88.0	North	Break-In Conn	1	0.001	0	0	0.001	
				401 S OLIVER ST	4" VCP MH Stub					
21		88.0	South	Break-In Conn	1	0.001	0	0	0.001	
				430 S DELLROSE	4" VCP MH Stub					
22		88.0	DS Manhole	5747-446	1	0.000	0	0	0.000	



Television Inspection Master Report

5/13/2009

7:50 AM

US Structure: 5747-445 433 OLIVER ST Date Insp: 12/17/2007 Basin: E04C
 DS Structure: 5747-444 4714 ARBOR ST Dir Televised: Upstream To Downstream

Pipe Information

Project No. : C-037 Dia: 8 Material: VCP Length: 159.8 Slope: 0.400 DVD #0349



Obs. #	VTR Counter	Distance	Location	Description	Rating	Obsrvd (gpm)	Ratings			Remain (gpm)
							Est. (gpm)	Struct	Clean	
1		0.0	US Manhole	5747-445	1	0.000	0	0	0.000	
2	433 S OLIVER	4.0	East	Break-In Conn 4" Break In Connection	5	0.010	400	0	0.010	Comment: BROKEN PIPE & PIPE MISSING.
3		5.1		Sealed Off Wye West	1	0.000	0	0	0.000	
4		7.4		Sealed Off Wye East	1	0.000	0	0	0.000	
5		13.7	Invert	Broken Pipe	5	0.060	100	0	0.060	
6		27.2		Sealed Off Wye West	1	0.000	0	0	0.000	
7		30.0		Sealed Off Wye East	1	0.000	0	0	0.000	
8		35.4	East	Break-In Conn	3	0.004	2	0	0.004	
	4718 & 4720 E. Arbor (tap repaired in 2011)			4" Break In Connection						
9		42.0	Upper Left	Crack-Horizontal	2	0.002	2	0	0.002	
10		52.8		Sealed Off Wye West	1	0.000	0	0	0.000	
11		55.9		Sealed Off Wye East	1	0.000	0	0	0.000	
12		74.6	Upper Right	Mat. Chngs to PVC	1	0.000	0	0	0.000	
13		78.5	E / 4714 E ARBOR	Break-In Conn 4" PVC Saddle "T" Conn	1	0.001	0	0	0.001	
14		79.9	W / 440 S DELLROSE	Break-In Conn 4" PVC Saddle "T" Conn	1	0.001	0	0	0.001	
15		84.1	Upper Right	Mat. Chngs to VCP	1	0.000	0	0	0.000	
16		92.8	Joint	Roots	1	0.002	1	1	0.002	
17		100.6	Crown	Broken Pipe	4	0.030	78	0	0.030	
18		103.7		Sealed Off Wye West	1	0.000	0	0	0.000	
19		106.2		Sealed Off Wye East	1	0.000	0	0	0.000	
20		129.2		Sealed Off Wye West	1	0.000	0	0	0.000	
21		132.2		Sealed Off Wye East	1	0.000	0	0	0.000	
22		148.1		Sealed Off Wye East	1	0.000	0	0	0.000	
23		150.8		Sealed Off Wye East	1	0.000	0	0	0.000	
24		155.2	Lower Left	Broken Pipe	3	0.010	60	0	0.010	
25		159.4	DS Manhole	5747-444	1					

SITE 6

LEWIS
Sheet 18 of 32

MH 5747-516
Remove and Replace MH Frame & Cover
200 S. Pershing
Approx MH depth = 12.2 ft

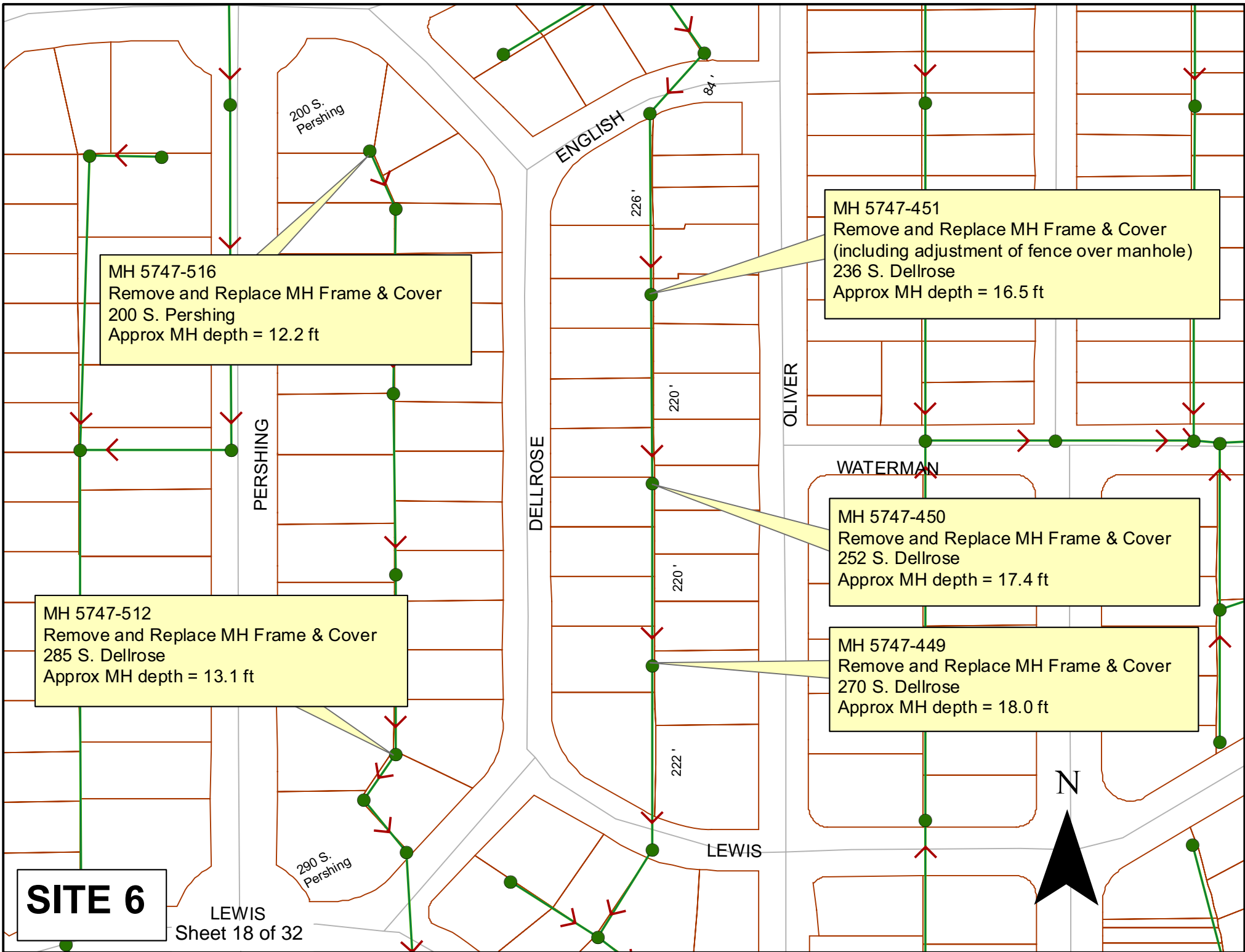
MH 5747-512
Remove and Replace MH Frame & Cover
285 S. Dellrose
Approx MH depth = 13.1 ft

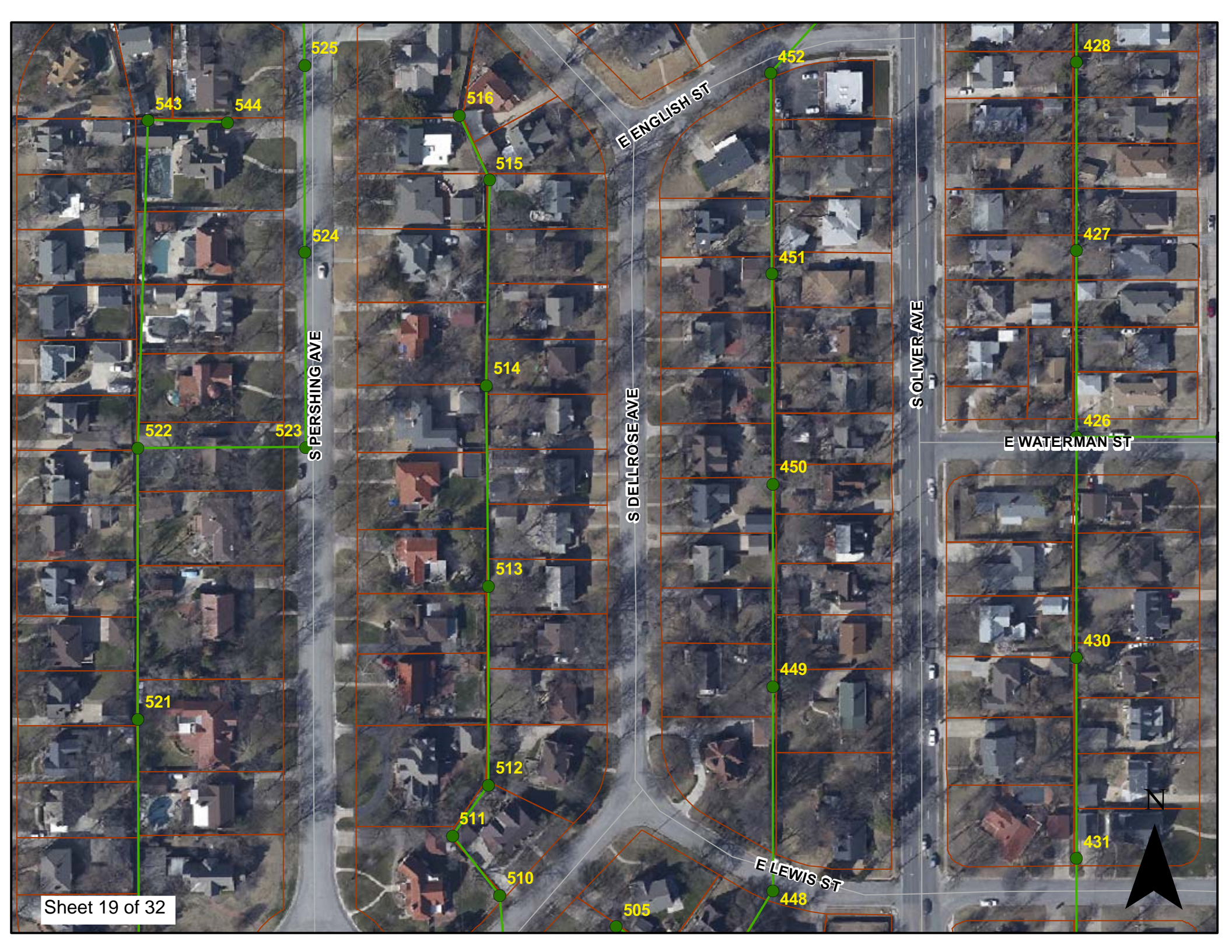
MH 5747-451
Remove and Replace MH Frame & Cover
(including adjustment of fence over manhole)
236 S. Dellrose
Approx MH depth = 16.5 ft

MH 5747-450
Remove and Replace MH Frame & Cover
252 S. Dellrose
Approx MH depth = 17.4 ft

MH 5747-449
Remove and Replace MH Frame & Cover
270 S. Dellrose
Approx MH depth = 18.0 ft

N





525

543

544

516

452

428

515

524

427

S PERSHING AVE

514

451

426

522

523

S DELLROSE AVE

513

450

E WATERMAN ST

521

512

449

430

511

510

E LEWIS ST

448

431

505

