

# PAVING PLANS FOR KRUG SOUTH ADDITION

PROJECT NO. 472-85056

THE CITY OF WICHITA, KANSAS  
GARY L. JANZEN, P.E., INTERIM CITY ENGINEER

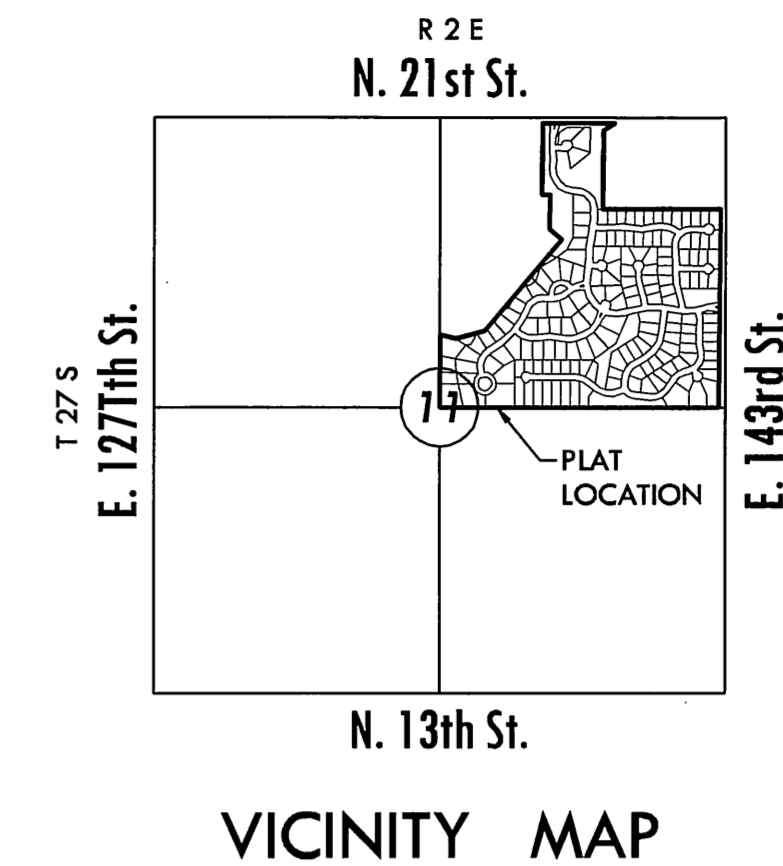
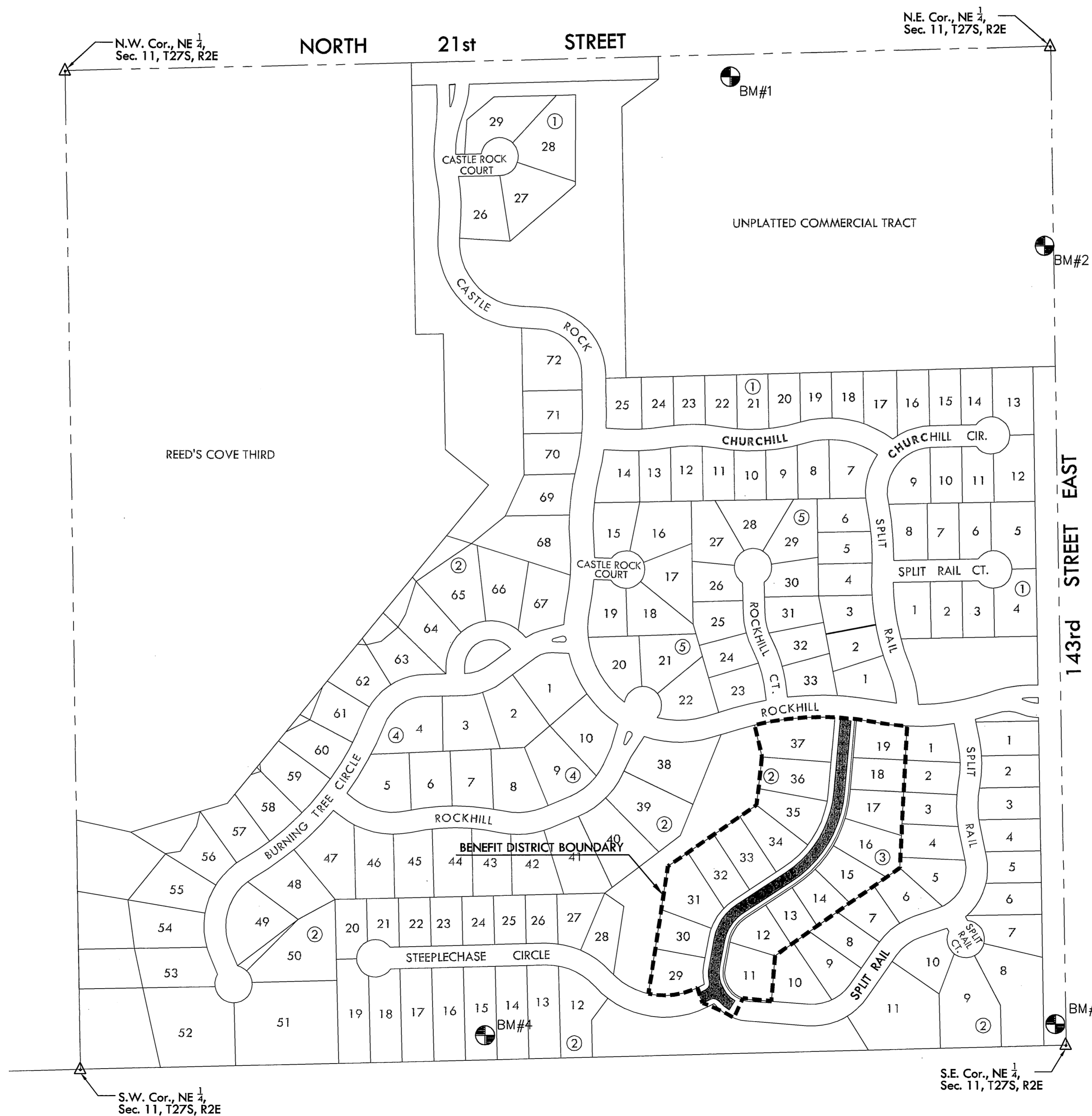
OCA NO. 766280

Wooddale : From the south line of Rockhill Street to the Southeast corner of Lot 11, Block 3.

## GENERAL NOTES

- UNLESS SHOWN OR STATED OTHERWISE ON THESE DRAWINGS, MATERIALS AND CONSTRUCTION SHALL BE IN ACCORDANCE WITH CITY OF WICHITA CONCRETE PAVEMENT AND ASPHALTIC CONCRETE PAVEMENT SPECIFICATIONS.
- CONTRACTOR WILL BE REQUIRED TO PROVIDE A MINIMUM ADVANCE NOTICE OF SEVENTY-TWO (72) HOURS TO UTILITY COMPANIES PRIOR TO STARTING ANY EXCAVATION AS FOLLOWS:  
KANSAS ONE-CALL 1-800-344-7233  
OR 687-2470 (LOCAL WICHITA)  
THE CONTRACTOR MUST NOTIFY THE FOLLOWING IN CASE OF AN EMERGENCY:  
SBC (TELEPHONE) 800-870-8390  
COX COMMUNICATIONS (CABLE) 262-0661  
WESTAR (ELECTRIC) 383-8600  
KANSAS GAS SERVICE (GAS) 832-3101  
CITY OF WICHITA WATER & SEWER MAINT. 262-6000  
BLACK HILLS ENERGY (GAS) 800-303-0357
- THE CONTRACTOR SHALL BE RESPONSIBLE FOR PRESERVING PROPERTY IRONS. THE CONTRACTOR WILL BE REQUIRED TO RE-ESTABLISH ANY PROPERTY IRONS WHICH ARE DAMAGED OR DESTROYED BY HIS CONSTRUCTION OPERATIONS. SUCH IRONS SHALL BE RE-ESTABLISHED BY A LICENSED LAND SURVEYOR IN ACCORDANCE WITH STATE LAWS.
- EXISTING UTILITIES AND THEIR LOCATIONS, AS SHOWN ON THE PLANS REPRESENT THE BEST INFORMATION OBTAINABLE FOR DESIGN. LOCATION INFORMATION HAS BEEN OBTAINED FROM THE VARIOUS UTILITY COMPANIES AND IS EITHER FROM COMPANY RECORD DRAWINGS OR COMPANY PROVIDED FIELD LOCATIONS. THE PLAN LOCATIONS SHOWN ARE NOT GUARANTEED. ADDITIONAL EXISTING UTILITIES MAY ALSO BE ENCOUNTERED.
- RUBBLE FROM THE REMOVAL OF MISCELLANEOUS STRUCTURES AND EXCESS EXCAVATION WHICH IS TO BE WASTED SHALL BE DISPOSED OF ON SITES TO BE PROVIDED BY THE CONTRACTOR. THESE SITES SHALL BE APPROVED BY THE ENGINEER AS TO SUITABILITY, APPEARANCE AND SITE LOCATION. LOCATIONS THAT, IN THE OPINION OF THE ENGINEER, WILL LEAVE AN UNSIGHTLY APPEARANCE WILL NOT BE APPROVED. ALL DISPOSAL SITES MUST BE APPROVED BY THE KANSAS DEPARTMENT OF HEALTH AND ENVIRONMENT. MATERIAL EITHER STOCKPILED OR DISPOSED OF IN A FLOOD PLAIN WOULD REQUIRE A KANSAS STATE BOARD OF AGRICULTURE PERMIT. ANY MATERIAL DUMPED IN WATERS OF THE UNITED STATES OR WETLANDS IS SUBJECT TO U.S. CORPS OF ENGINEERS PERMITTING REGULATIONS. ANY MATERIAL BURIED OR STOCKPILED BEYOND APPROVED CONSTRUCTION LIMITS WOULD REQUIRE ADDITIONAL ARCHAEOLOGICAL INVESTIGATIONS UNLESS BURIED IN A PREVIOUSLY APPROVED BORROW LOCATION.
- THIS PROJECT INCLUDES A CERTAIN AMOUNT OF ROLL TYPE CURB CONSTRUCTION. ROLL CURBS SHALL BE DEPRESSED THROUGH ALL DRIVEWAY OPENINGS WHEN SUCH DRIVES ARE CONSTRUCTED AS A PART OF THE PROJECT. NO MORE THAN 2 DRIVES 20 FEET IN WIDTH OR EQUIVALENT COMBINATIONS THEREOF ARE TO BE CONSTRUCTED WITH THIS PROJECT.
- TRANSITION CURB FROM FULL HEIGHT COMBINATION CURB AND GUTTER TO ROLL TYPE COMBINATION CURB AND GUTTER IS TO BE PAID AS BID FOR LINEAL FEET COMBINED CURB AND GUTTER (3 5/8" ROLL).
- A SAW CUT OF AT LEAST ONE-HALF THE DEPTH OF THE EXISTING SURFACE COURSES OR ONE-FOURTH THE DEPTH OF THE EXISTING TOTAL PAVEMENT THICKNESS SHALL BE PROVIDED AT LOCATIONS WHERE PROPOSED CONSTRUCTION ADJUTS AN EXISTING SURFACE OR PAVEMENT FOR WHICH PARTIAL REMOVAL OF THAT SURFACE OR PAVEMENT IS REQUIRED. SAW JOINT TO FACILITATE REMOVAL WITHIN THREE (3) FEET OF EXISTING JOINTS WILL NOT BE PERMITTED AND FOR SUCH INSTANCES THE LIMITS OF REMOVAL SHALL EXTEND TO THE EXISTING JOINT. SUCH SAW CUTS WILL NOT BE PAID FOR DIRECTLY AND THIS COST SHALL BE CONSIDERED AS SUBSIDIARY TO THE REMOVAL OF SURFACE OR PAVEMENT.
- CONTRACTOR SHALL RESEED AND MULCH ALL DISTURBED AREAS. COST SHALL BE CONSIDERED SUBSIDIARY TO SITE RESTORATION.
- DEVELOPER FOR THIS PROJECT IS:  
KRUG SOUTH RESIDENTIAL, LLC  
RITCHIE DEVELOPMENT CORPORATION  
8100 E. 22nd ST. BLDG. 1000  
WICHITA, KANSAS, 67226  
CONTACT - TERRY D. RHEA, VICE PRESIDENT  
316-684-7300

PROJECT LENGTH	
Wooddale	915 L.F.
Steeplechase Cir.	22 L.F.
<b>TOTAL</b>	<b>937 L.F.</b>
EARTHWORK SUMMARY*	
EXCAVATION	520 C.Y.
COMP. FILL (95%)	460 C.Y.



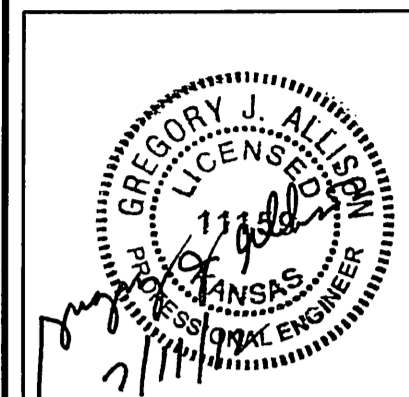
## INDEX TO DRAWINGS

SHEET NO.	DESCRIPTION
1	TITLE SHEET
2-8	DETAILS
9-10	WOODDALE
11	STEEPLECHASE CIRCLE
12	BUBBLE MAP
13	EROSION CONTROL PLAN
14-18	BMP DETAILS
19-20	CROSS SECTIONS
21-23	PLAT

## BENCHMARKS

Datum BM	"I" at NE corner of inlet on S. side of Williamsgate over bridge in Hawthorne Addition. Elev. = 1355.74 (NGVD 29)
BM#1	RR spike in S. face of PP, 3rd PP W. of 143rd St. (799' from CL) S. side of 21st St. (49' from CL) Elev. = 1362.17(NGVD 29)
BM#2	FH NE bolt w/ tag on top of flange, W. side of 143rd St. NW of drive. (23' from CL) Elev. = 1382.81(NGVD29)
BM#3	RR spike in N. face of HLP in N. pole, the first HLP w. of E. 143rd St. Elev. = 1370.25(NGVD 29)
BM#4	RR spike in N. face of HLP in N. pole, the third HLP west of E. 143rd St. Elev. = 1358.43(NGVD29)
BM#5	BM Chiseled square on top of curb between Lots 65 and 66, Block 2. Elev. = 1358.93 NGVD 29
BM#6	BM Chiseled square on top of curb between Lots 62 and 63, Block 2. Elev. = 1354.11 NGVD 29
BM#7	TBM Chiseled "+" on north rim of sanitary sewer manhole 187' southwest of south end of existing pavement on Burning Tree, 9.7' north of "south" corner of Lot 59, Block 2. Elev. = 1354.96 NGVD 29

**MKEC**  
ENGINEERING  
CONSULTANTS, INC.  
411 N. WEBB ROAD  
WICHITA, KS. 67206  
316 - 684 - 9600



PAVING PLANS  
**KRUG SOUTH ADDITION**  
PHASE 3

**TITLE SHEET**  
SHEET TITLE  
472-85056  
PROJECT NUMBER

DFL / JWC / GJA  
DESIGNED / DRAWN / CHECKED

ISSUED  
July 2012  
REVISED

SHEET NO.  
1 of 23