

**BENCHMARKS:**

**BM #1:**  
RR Spike in CATV Pole, 85' east and 77' south of SE corner of Woods North 3rd Addition.  
Elev. = 1383.00 NAVD88

**BM #2:**  
"□" cut at centerline of inlet adjacent to Lot 29, Block A, Woods North 2nd Addition.  
Elev. = 1387.12 NAVD88

**BM #3:**  
Cross cut on north end of west headwall 137.5' south & 12' west of the intersection of 29th St N & 127th St E.  
ELEV. = 1382.45 NAVD88

Curve #3				
Curve Data Based on Centerline				
Rad. = 200'	Delta = 142°13'	Tangent = 25.39'		
Arc = 50.50'	L.C. = 50.38'	Def. Ft. = 8.59620 Min.		
Station	Arc	Chord	Defl.	Total Defl.
0+50.00		8' Right	0°00'00"	0°00'00"
0+25.25	25.25'	26.25'	3°37'03"	3°37'03"
0+50.50	25.25'	26.25'	3°37'04"	7°14'07"

P.V.I.  
Elev. = 1390.70  
50' V.C.

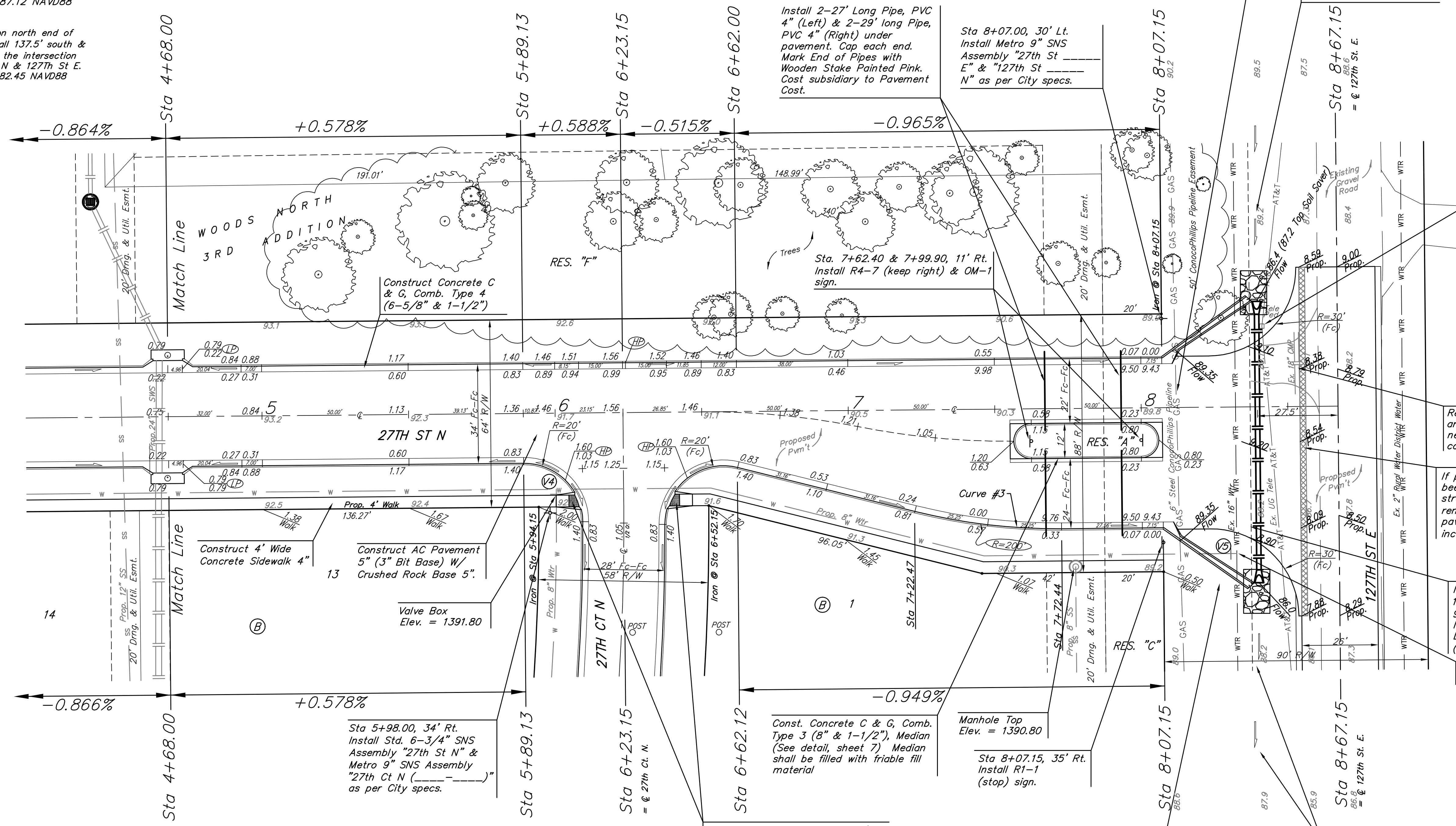
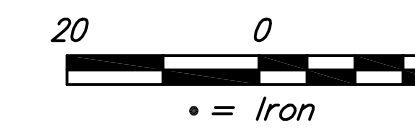
P.V.I.  
Elev. = 1391.40  
No V.C.

P.V.I.  
Elev. = 1391.60  
30' V.C.

P.V.I.  
Elev. = 1391.40  
No V.C.

**CAUTION!**  
Existing 6" Steel ConocoPhillips Pipeline to be removed by ConocoPhillips prior to construction. Coordinate construction with Kevin Kent, 316-761-1621.

Regrade ditch to ensure positive drainage in 100'. Cost of regrading to be incidental to "Grading, Mass". See Esmt. Grading Plan for details.



All trees in Res. "F" shall remain and be protected from damage during construction. Overhanging limbs shall be chainsaw trimmed by the Contractor only as necessary for construction and with approval of the Engineer and Developer. Cost of tree trimming to be included in bid item "Site Clearing"

Construct Wheelchair Ramp w/ Detectable Warnings (both sides) (See detail, sheet 6) Transition from Concrete C & G, Comb. Type 4 (6-5/8" & 1-1/2") to Concrete C & G, Comb. Type 2 (3-5/8" RL & 1-1/2") through wheelchair ramps (both sides).

Manhole Top Elev. = 1390.80  
Sta 8+07.15, 35' Rt. Install R1-1 (stop) sign.

Regrade ditch south to ensure positive drainage in 300' @ 0.67% slope. Cost of regrading to be incidental to "Grading, Mass". See Esmt. Grading Plan for details.

Coordinate relocation of existing AT&T pedestal with utility company. (268-2245) Ped Elev. = 1389.12

Remove existing 18" CMP and entrance as necessary for street construction.

If proposed asphalt mat has been constructed prior to street improvements: Saw cut, remove and replace 2' existing pavement as shown. To be incidental to "Site Restoration".

Install 96.0 L.F. Pipe, RCP 18", incl. End Sections with 9" Soil Saver at N. End. Install 15.0 S.Y. Rip-Rap, Light Stone as indicated (each side).  
Valve Box Elev. = 1389.40

**Baughman** WOODS NORTH 3RD ADD. PH. I  
**27TH ST N**  
STA 4+68.00 TO STA 8+67.15

Baughman Company, P.A. 515 Ellis St. Wichita, KS 67211 P 316-263-7271 F 316-263-0149  
ENGINEERING | SURVEYING | PLANNING | LANDSCAPE ARCHITECTURE

PROJECT NUMBER 47285046	DESIGN AEG	DRAWN TMS
REVISIONS:	APPROVED	DATE 07/12
	SCALE Noted	
	SHEET	<b>9 OF 35</b>

08-13\_Sr1.dwg 09-12-E428