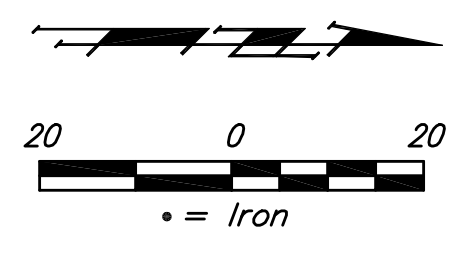


**BENCHMARKS:**  
 BM #1:  
 RR Spike in CATV Pole, 85' east and 77' south of SE corner of Woods North 3rd Addition.  
 Elev. = 1383.00 NAVD88

BM #2:  
 "□" cut at centerline of inlet adjacent to Lot 29, Block A, Woods North 2nd Addition.  
 Elev. = 1387.12 NAVD88

BM #3:  
 Cross cut on north end of west headwall 137.5' south & 12' west of the intersection of 29th St N & 127th St E.  
 ELEV. = 1382.45 NAVD88

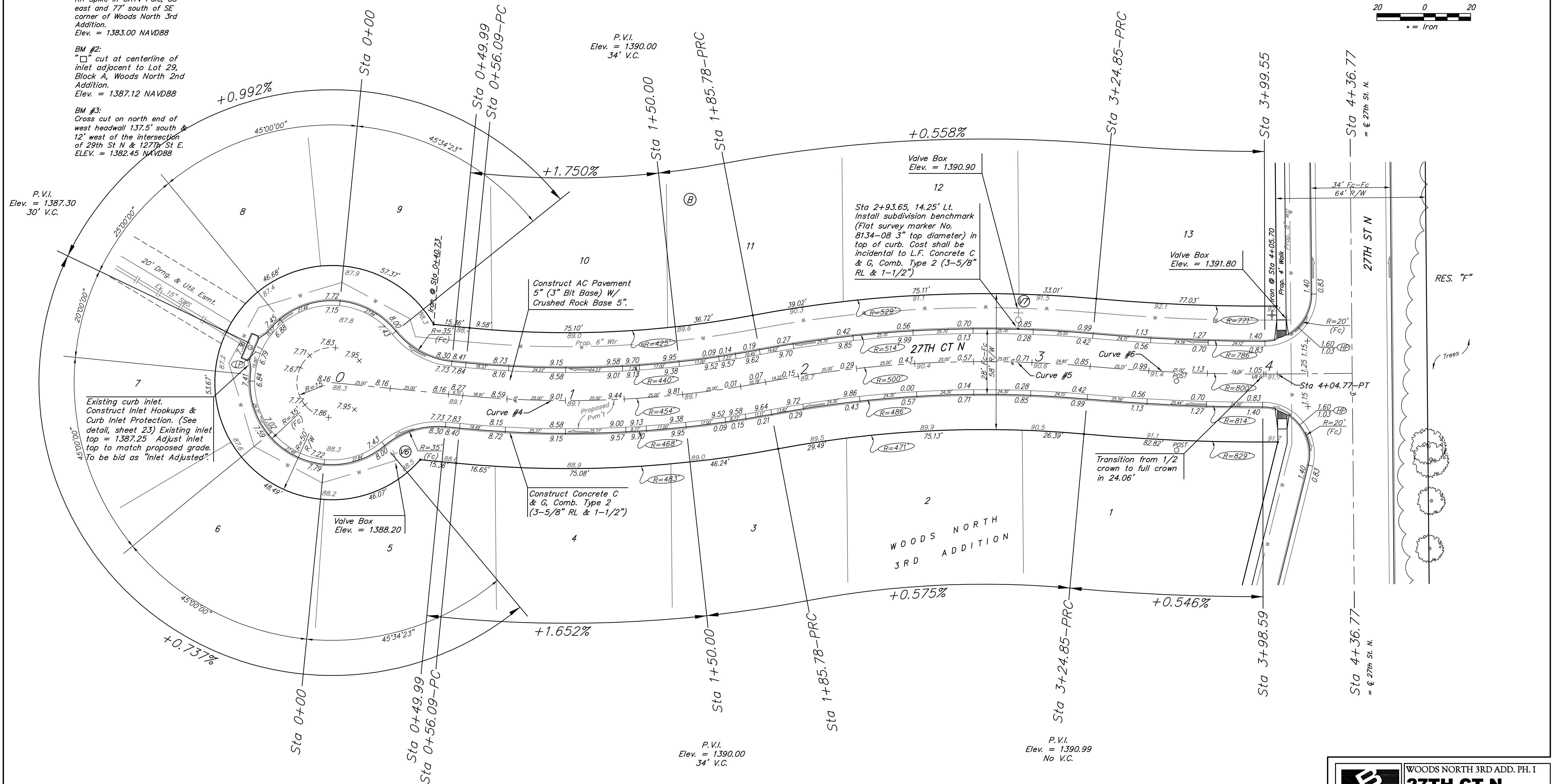


P.V.I.  
 Elev. = 1387.30  
 30' V.C.

P.V.I.  
 Elev. = 1390.00  
 34' V.C.

P.V.I.  
 Elev. = 1390.00  
 34' V.C.

P.V.I.  
 Elev. = 1390.99  
 No V.C.



Curve #4

Curve Data Based on Centerline  
 Rad. = 454' Delta = 162°59' Tangent = 65.29'  
 Arc = 129.69' L.C. = 129.24' Def./ft. = 3.78589 Min.

Station	Arc	Face Chord Lengths		Defl.	Total Defl.
		8' Left	8' Right		
0+56.09	-	-	-	0°00'00"	0°00'00"
0+75.00	18.91'	17.99'	19.82'	1°11'35"	1°11'35"
1+00.00	25.00'	23.78'	26.21'	1°34'39"	2°46'14"
1+25.00	25.00'	23.78'	26.21'	1°34'39"	4°20'53"
1+50.00	25.00'	23.78'	26.21'	1°34'39"	5°55'32"
1+75.00	25.00'	23.78'	26.21'	1°34'39"	7°30'11"
1+85.78	10.78'	10.26'	11.30'	0°40'48"	8°10'59"

Curve #5

Curve Data Based on Centerline  
 Rad. = 500' Delta = 15°56'11" Tangent = 69.99'  
 Arc = 139.07' L.C. = 138.62' Def./ft. = 3.43778 Min.

Station	Arc	Face Chord Lengths		Defl.	Total Defl.
		8' Left	8' Right		
1+85.78	-	-	-	0°00'00"	0°00'00"
2+00.00	14.22'	14.85'	13.58'	0°48'53"	0°48'53"
2+25.00	25.00'	26.10'	23.90'	1°25'57"	2°14'50"
2+50.00	25.00'	26.10'	23.90'	1°25'56"	3°40'46"
2+75.00	25.00'	26.10'	23.90'	1°25'57"	5°06'43"
3+00.00	25.00'	26.10'	23.90'	1°25'57"	6°32'40"
3+24.85	24.85'	25.94'	23.75'	1°25'25"	7°58'05"

Curve #6

Curve Data Based on Centerline  
 Rad. = 800' Delta = 5°43'25" Tangent = 40.00'  
 Arc = 79.92' L.C. = 79.90' Def./ft. = 2.14882 Min.

Station	Arc	Face Chord Lengths		Defl.	Total Defl.
		8' Left	8' Right		
3+24.85	-	-	-	0°00'00"	0°00'00"
3+50.00	25.15'	24.46'	25.84'	0°54'03"	0°54'03"
3+75.00	25.00'	24.31'	25.69'	0°53'43"	1°47'46"
3+98.59	23.59'	22.94'	24.24'	0°50'41"	2°38'27"
3+99.55	0.96'	0.93'	0.99'	0°02'04"	2°40'31"
4+04.77	5.22'	5.08'	5.36'	0°11'13"	2°51'44"

NOTE: ROLL TYPE CURB & GUTTER (TYPE 2) TO BE CONSTRUCTED ON THE PAVEMENT SHOWN ON THIS SHEET. TOP OF CURB ELEVATIONS ARE GIVEN FOR FULL HEIGHT CURB (TYPE 4).

**Baughman** ENGINEERING | SURVEYING | PLANNING | LANDSCAPE ARCHITECTURE

**WOODS NORTH 3RD ADD. PH. I**  
**27TH CT N**  
 STA 0+00 TO STA 4+36.77

PROJECT NUMBER: 47285046

DESIGN: AEG  
 DRAWN: TMS

APPROVED: DATE: 07/12

SCALE: Noted

SHEET: **10 OF 35**

08-13\_Sr1.dwg 09-12-E428