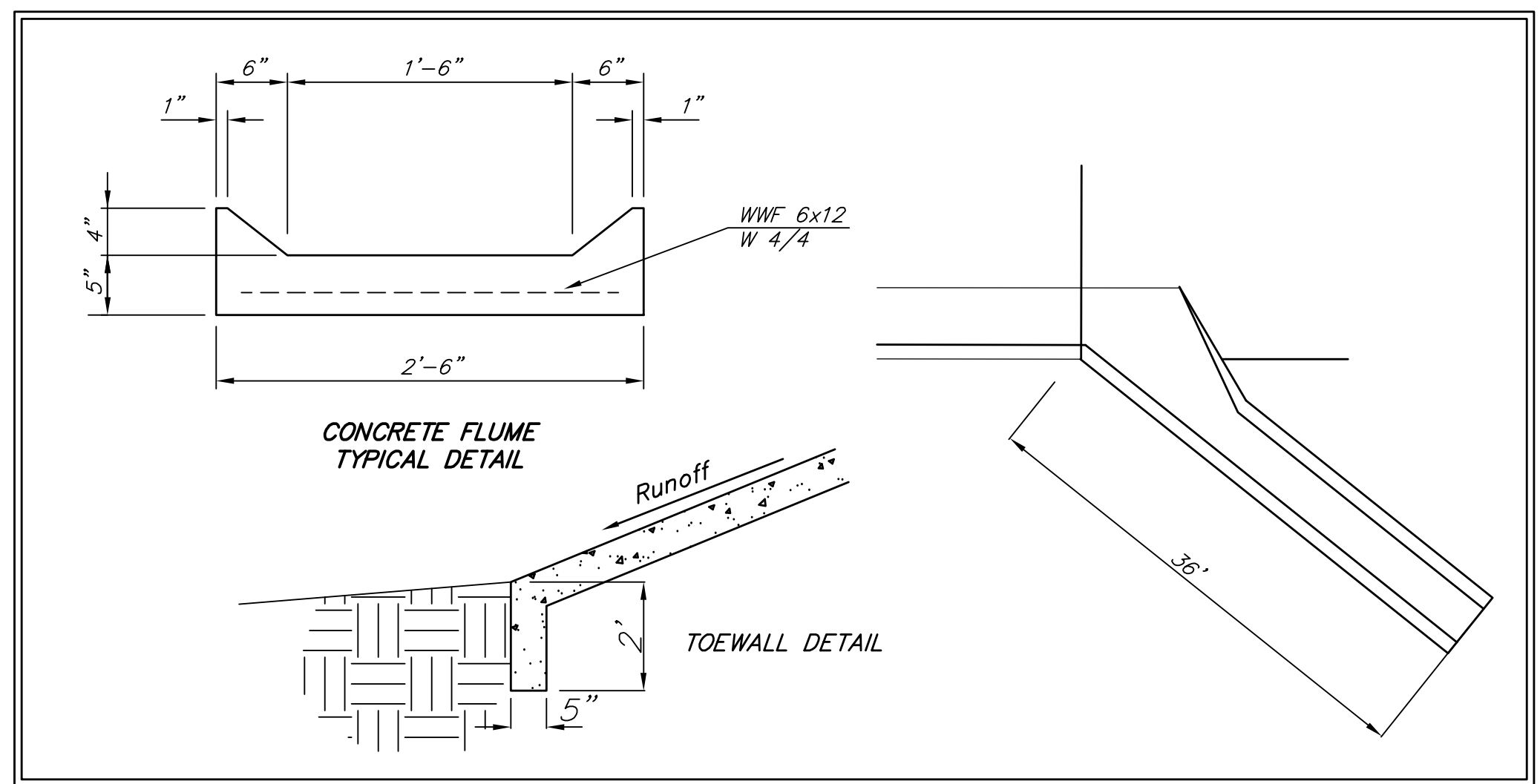
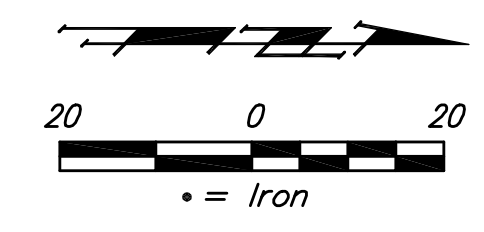
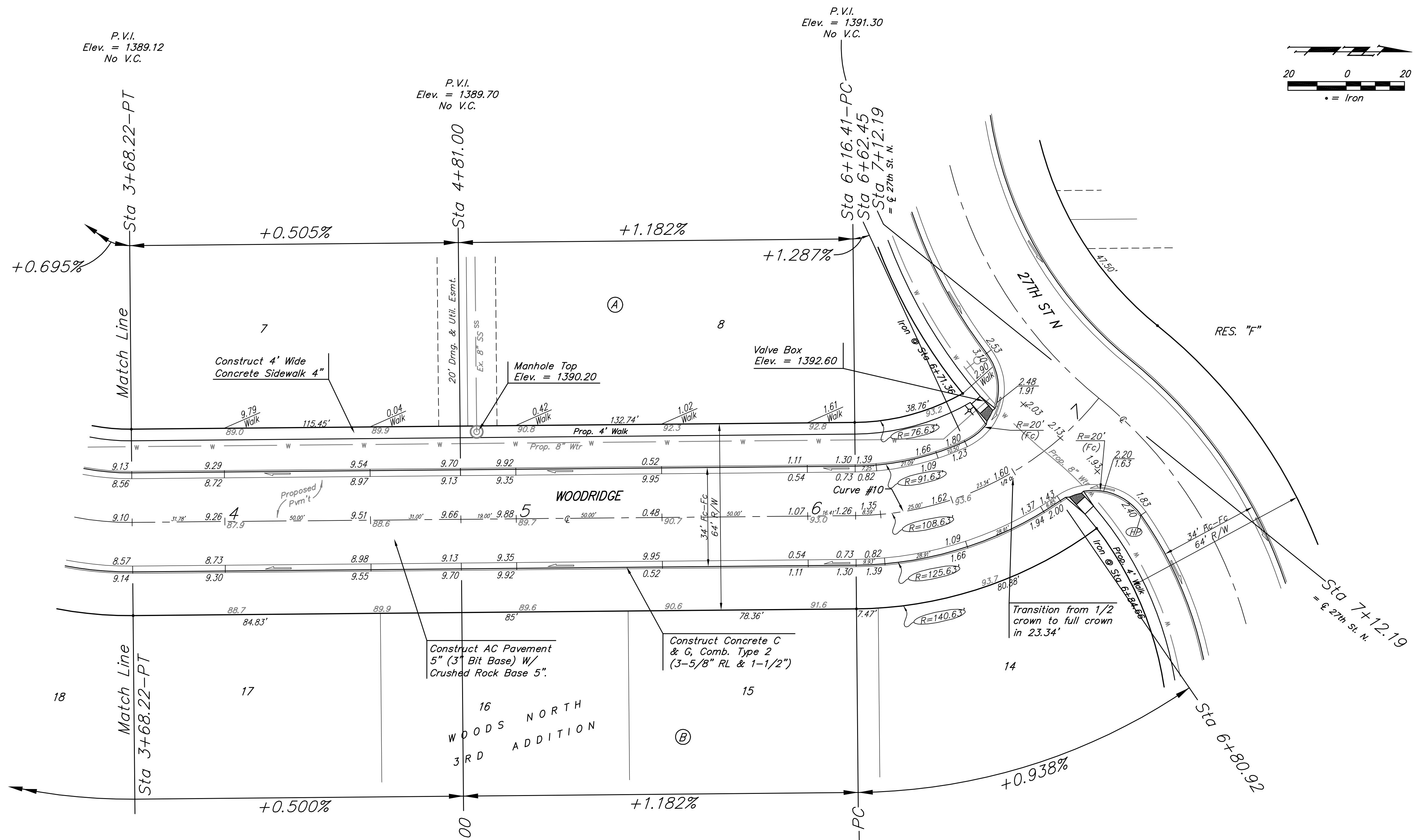


BENCHMARKS:
 BM #1:
 RR Spike in CATV Pole, 85' east and 77' south of SE corner of Woods North 3rd Addition.
 Elev. = 1383.00 NAVD88

BM #2:
 " " cut at centerline of inlet adjacent to Lot 29, Block A, Woods North 2nd Addition.
 Elev. = 1387.12 NAVD88

BM #3:
 Cross cut on north end of west headwall 137.5' south & 12' west of the intersection of 29th St N & 127th St E.
 ELEV. = 1382.45 NAVD88



Curve #10					
Curve Data Based on Centerline					
Rad. = 108.63'		Delta = 50°30'59"		Tangent = 51.25'	
Arc = 95.78'		L.C. = 92.70'		Def./Ft. = 15.82263 Min.	
Station	Arc	8' Left	8' Right	Defl.	Total Defl.
6+16.41	-	-	-	0.0000'	0.0000'
6+25.00	8.59'	6.61'	10.56'	2'15.55"	2'15.55"
6+50.00	25.00'	19.20'	30.68'	6'35.34"	8'51.29"
6+62.45	12.45'	9.58'	15.31'	3'16.59"	12'08.28"
7+12.19	49.74'	37.96'	60.65'	13'07.02"	25'15.30"

NOTE: ROLL TYPE CURB & GUTTER (TYPE 2) TO BE CONSTRUCTED ON THE PAVEMENT SHOWN ON THIS SHEET. TOP OF CURB ELEVATIONS ARE GIVEN FOR FULL HEIGHT CURB (TYPE 4).

	WOODS NORTH 3RD ADD. PH. I	
	WOODRIDGE STA 3+68.22 TO STA 7+12.19	
<small>Baughman Company, P.A. 515 Ella St. Wichita, KS 67211 P 316-263-7271 F 316-263-0416 ENGINEERING SURVEYING PLANNING LANDSCAPE ARCHITECTURE</small>		
PROJECT NUMBER 47285046	DESIGN AEG	DRAWN TMS
REVISIONS:	APPROVED DATE 07/12	SCALE Noted
		12 OF 35
<small>08-13_Sr1.dwg</small>		<small>09-12-E428</small>