

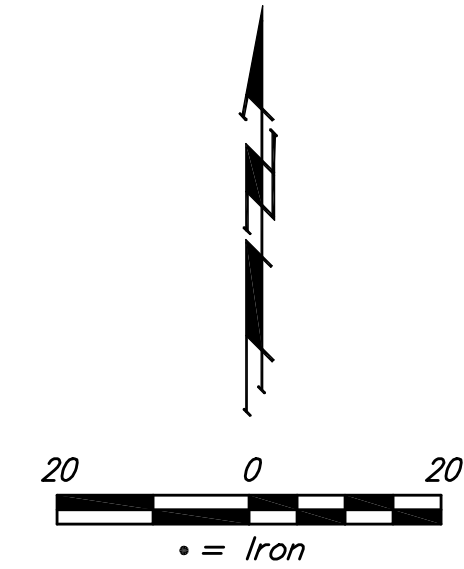
BENCHMARKS:

BM #1:
RR Spike in CATV Pole, 85' east and 77' south of SE corner of Woods North 3rd Addition.
Elev. = 1383.00 NAVD88

BM #2:
"□" cut at centerline of inlet adjacent to Lot 29, Block A, Woods North 2nd Addition.
Elev. = 1387.12 NAVD88

BM #3:
Cross cut on north end of west headwall 137.5' south & 12' west of the intersection of 29th St N & 127th St E.
ELEV. = 1382.45 NAVD88

Street & Station	Location Description	Elevation
27TH ST N 2+03.90, 17.25' Rt.	Adjacent to Fire Hydrant at W. End of W. Curb Return of 27th St. N & Woodridge.	
27TH CT N 2+93.65, 14.25' Lt.	Adjacent to Fire Hydrant near common lot corner of Lots 12 & 13, Block B.	
WOODRIDGE 2+93.67, 17.25' Lt.	Adjacent to Fire Hydrant at W. End of N. Curb Return of Woodridge & Woodridge Ct.	

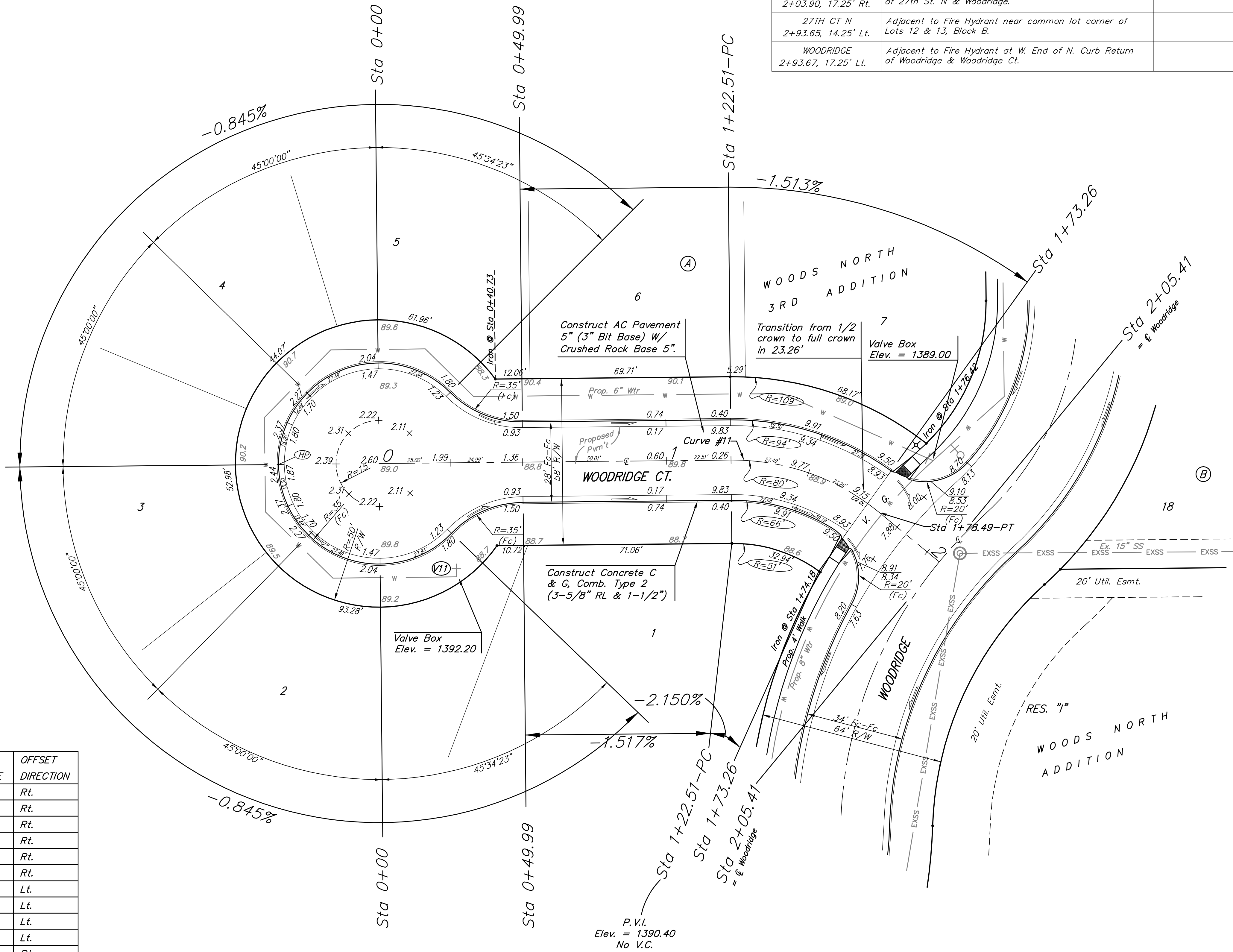


Curve #11					
Curve Data Based on Centerline					
Rad. = 80'	Delta = 40° 43'	Tangent = 29.19'			
Arc = 55.98'	L.C. = 54.85'	Def./Pt. = 21.48729 Min.			
Face Chord Lengths					
Station	Arc	8' Left	8' Right	Defl.	Total Defl.
1+22.51	-	-	-	0.0000	0.0000
1+25.00	2.49'	3.17'	1.81'	0.5330	0.5330
1+50.00	25.00'	31.75'	18.05'	8.5711	9.5041
1+66.50	16.50'	21.00'	11.94'	5.5433	15.4514
1+73.26	6.76'	8.67'	4.90'	2.7515	18.1029
1+78.49	5.23'	6.67'	3.79'	1.5223	20.1052

WATER VALVE LOCATION TABLE

VALVE NUMBER	STREET	BASELINE STATION	OFFSET DISTANCE	OFFSET DIRECTION
V1	27TH ST N	0+63.00	26'	Rt.
V2	27TH ST N	2+03.90	26'	Rt.
V3	27TH ST N	2+14.92	26'	Rt.
V4	27TH ST N	6+00.15	26'	Rt.
V5	27TH ST N	8+32.15	50'	Rt.
V6	27TH CT N	0+30.41	30'	Rt.
V7	27TH CT N	2+93.65	23'	Lt.
V8	WOODRIDGE	0+68.88	27'	Lt.
V9	WOODRIDGE	2+83.56	26'	Lt.
V10	WOODRIDGE	2+94.83	25.50'	Lt.
V11	WOODRIDGE CT.	0+26.50'	39.73'	Rt.

Paving contractor will be responsible to operate all water valves on the project, in the presence of the inspector, to ensure accessibility to the valves, and that all valves (except blowoffs) are left in the "ON" position when the project is completed.



NOTE: ROLL TYPE CURB & GUTTER (TYPE 2) TO BE CONSTRUCTED ON THE PAVEMENT SHOWN ON THIS SHEET. TOP OF CURB ELEVATIONS ARE GIVEN FOR FULL HEIGHT CURB (TYPE 4).

	WOODS NORTH 3RD ADD. PH. I	
	WOODRIDGE CT. STA 0+00 TO STA 2+05.41	
Baughman Company, P.A. 515 Ella St. Wichita, KS 67211 P 316-263-7271 F 316-263-0149 ENGINEERING SURVEYING PLANNING LANDSCAPE ARCHITECTURE		
PROJECT NUMBER 47285046	DESIGN AEG	DRAWN TMS
REVISIONS:	APPROVED Noted	DATE 07/12
		SCALE Noted
		SHEET 13 OF 35
08-13_Sr1.dwg		09-12-E428