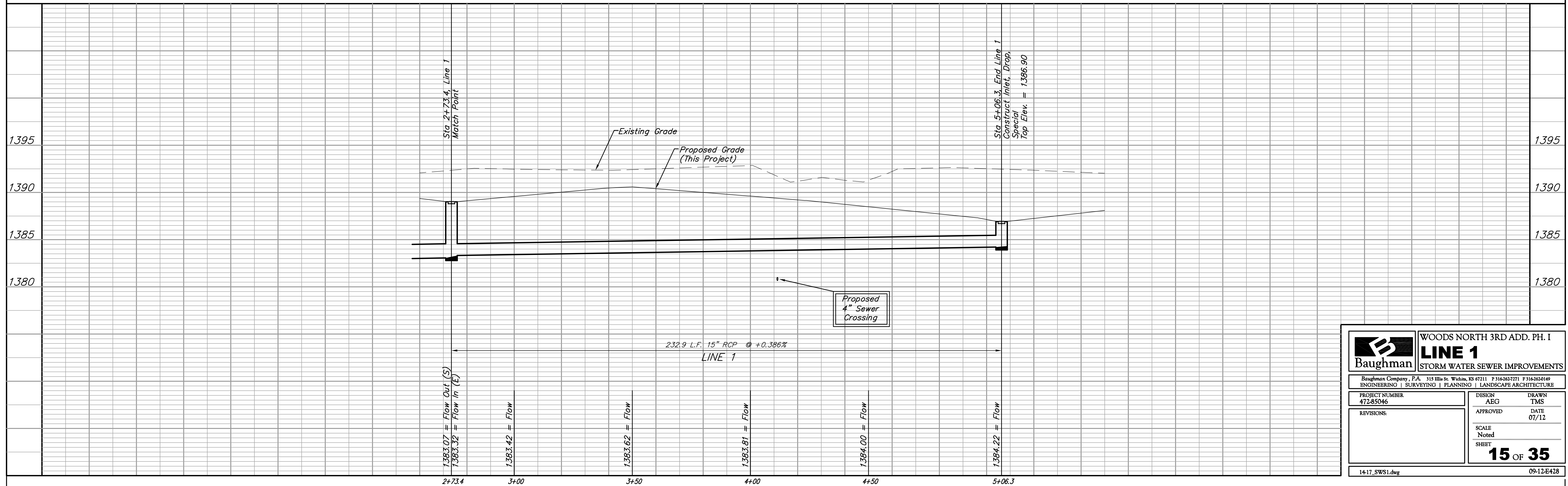
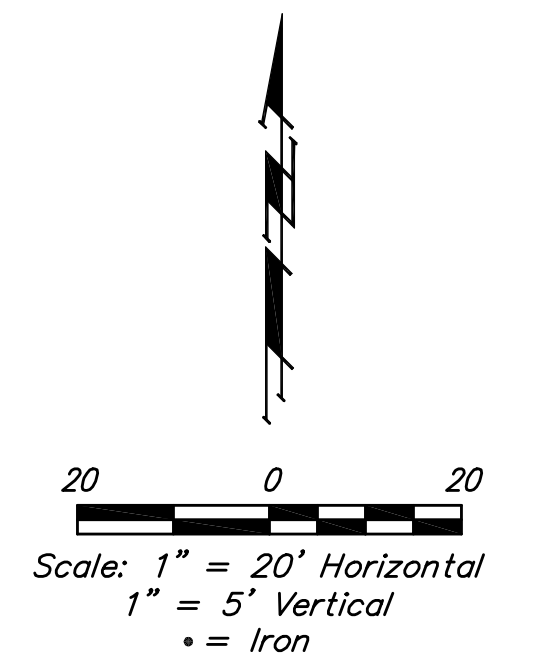
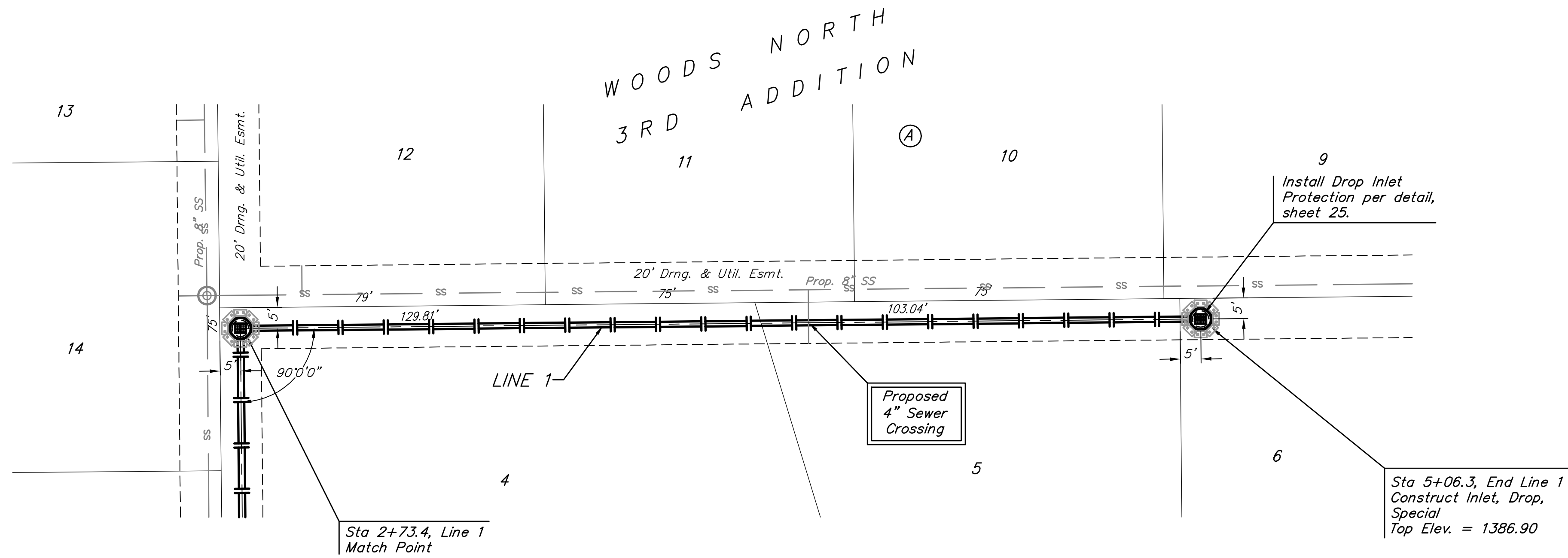


**BENCHMARKS:**  
 BM #1:  
 RR Spike in CATV Pole, 85' east and 77' south of SE corner of Woods North 3rd Addition.  
 Elev. = 1383.00 NAVD88

BM #2:  
 " " cut at centerline of inlet adjacent to Lot 29, Block A, Woods North 2nd Addition.  
 Elev. = 1387.12 NAVD88

BM #3:  
 Cross cut on north end of west headwall 137.5' south & 12' west of the intersection of 29th St. N & 127th St. E.  
 ELEV. = 1382.45 NAVD88



		WOODS NORTH 3RD ADD. PH. I	
		<b>LINE 1</b>	
STORM WATER SEWER IMPROVEMENTS		<small>Baughman Company, P.A. 315 Ellis St. Wichita, KS 67211 P 316-262-7271 F 316-262-0149          ENGINEERING   SURVEYING   PLANNING   LANDSCAPE ARCHITECTURE</small>	
PROJECT NUMBER 472-85046	DESIGN AEG	DRAWN TMS	APPROVED DATE 07/12
REVISIONS:	SCALE Noted SHEET		
			<b>15 OF 35</b>
14-17_SWS1.dwg		09-12-E428	