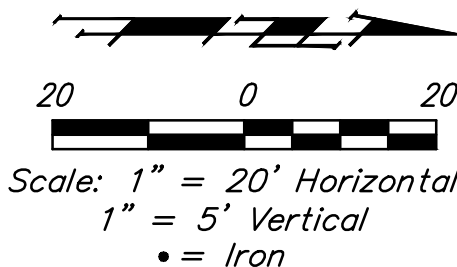


BENCHMARKS:
 BM #1: "□" Cut on concrete header, east side of brick street, Old Lawrence Road, 520' north of 31st Street South. Elev. = 1281.30 NAVD88
 BM #2: "□" Cut on top of curb, west return, 4' west of wheelchair ramp, NW corner of Old Lawrence Road & 31st Street South. Elev. = 1280.47 NAVD88

* Water line to be lowered by water department.



Remove and replace existing concrete pavement and curb & gutter as necessary for sws construction.
 Sta 0+00 to Sta 0+27.0 Install 27.0 L.F. Fill, Sand (Flushed & Vibrated).

CAUTION!
 Ex. 12" Water Line Crossing*

Remove existing manhole, 35.4 L.F. 15" SWS and curb inlet.
 Remove existing wheelchair ramp. Construct Wheelchair Ramp w/ Detectable Warnings. (See detail, sheet 8)

CAZEL'S 4TH ADDITION

Grade from end of existing 1'x3' RCBC to proposed ditch to ensure positive drainage. 8.0 S.Y. Rip-Rap, Light Stone.*

UNPLATTED

* Use extreme caution near existing water line and shorten toe if necessary. Depth and location of existing water line is unknown.

LOUIS 9TH ADDITION

CAUTION!
 Ex. 2" Steel Gas Line Crossing (Depth Unknown, abandoned prior to sws construction).

CAUTION!
 Ex. 2" Steel Gas Line Crossing (Depth Unknown, abandoned prior to sws construction).

All trees shall remain and be protected from damage during construction. Overhanging limbs shall be trimmed by the Contractor only as necessary for construction and with approval of the Engineer. Cost of tree trimming to be included in bid item "Site Clearing"

Remove existing concrete pavement and curb & gutter as necessary for sws construction.

Coordinate relocation of power pole with Westar.
 Coordinate relocation of existing gas line with gas company.

One UG AT&T line will be abandoned prior to sws construction.

CAUTION!
 Ex. 2" Plastic Gas Line Crossing (Depth Unknown, abandoned prior to sws construction).

CAUTION!
 Ex. 0H Elec., AT&T, 8" Water Line Crossings (Depth Unknown)

Coordinate relocation of existing water line and gas line line with utility companies.
 Two UG AT&T lines will be abandoned prior to sws construction.

End ditch, match at existing 14"x22" HECMP.

Install 15.0 S.Y. Rip-Rap, Light Stone.*

Sta 0+00 to Sta 0+27.0 Install 27.0 L.F. Fill, Sand (Flushed & Vibrated).

Sta 1+00.0, Line 1 Construct Inlet, Drop (Double) Top Elev. = 1280.10
 Sta 0+35.4, Line 1 Construct Inlet, Curb (Type 1) (L=5' W=4') Top Elev. = 1280.10

CAUTION!
 Ex. 0H Elec. & AT&T Line Crossings (Depth Unknown)

CAUTION!
 Ex. 2" Plastic Gas Line Crossing (Depth Unknown, abandoned prior to sws construction).

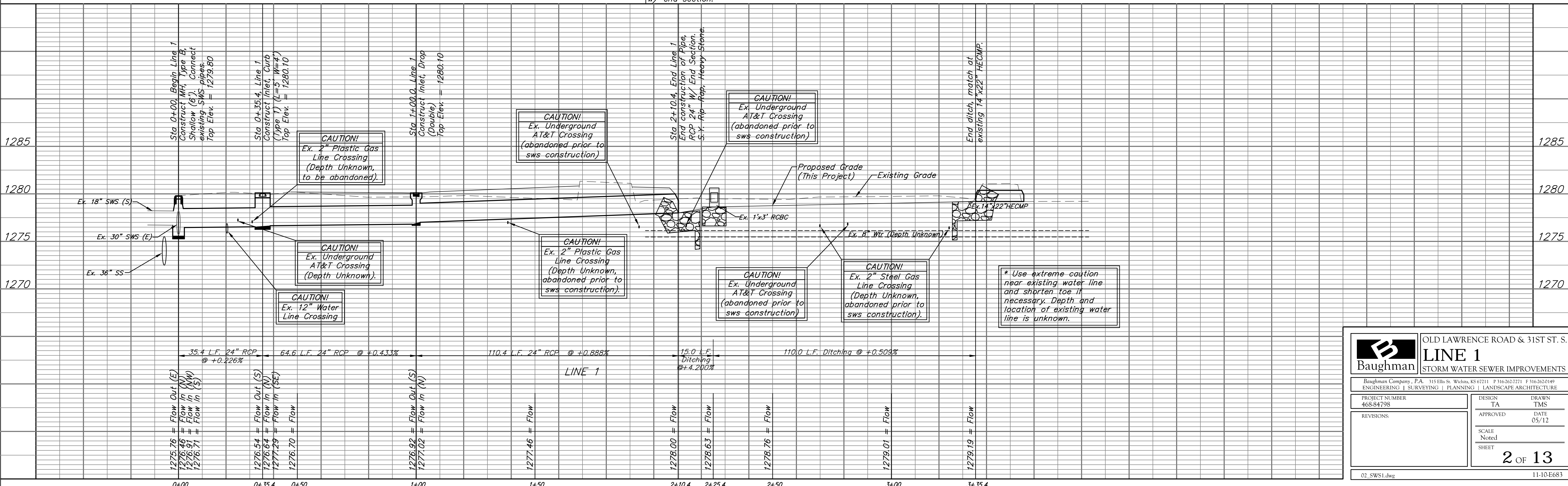
Construct Concrete Driveway 6" (20' wide).
 Remove existing concrete headwall, RCBC, and 18" CMP w/ end section.

Sta 2+10.4, End Line 1 End construction of Pipe, RCP 24" W/ End Section. 15.0 S.Y. Rip-Rap, Light Stone.*

UNPLATTED

DRIVEWAY REPLACEMENT TABLE

NO.	ADDITION	STATION	DIRECTION	WIDTH
1	Lot 1, Don York Addition	1+88.51	RT.	20'



Baughman OLD LAWRENCE ROAD & 31ST ST. S.
LINE 1
 STORM WATER SEWER IMPROVEMENTS

Baughman Company, P.A. 115 Ellis St. Wichita, KS 67211 P 316-263-7271 F 316-262-0149
 ENGINEERING | SURVEYING | PLANNING | LANDSCAPE ARCHITECTURE

PROJECT NUMBER 468-84798	DESIGN TA	DRAWN TMS
REVISIONS:	APPROVED	DATE 05/12
	SCALE Noted	SHEET 2 OF 13

02_SWS1.dwg 11-10-E683