

**GENERAL NOTES:**

1. Contractor will be required to provide notice to utility companies a minimum of twenty-four (24) hours prior to any excavation, as follows:

Kansas One-Call 687-2470

The Contractor must notify the following in case of an emergency:

- Cox Communications 262-4270
- Kansas Gas Service 1-888-482-4950
- Westar Energy 393-8650
- Agula Energy 1-800-303-0357
- SDC 268-2245
- City of Wichita Water Dept. 268-4563
- City of Wichita Sewer Maint. 268-4024
- City of Wichita Storm Sewer Maint. 268-4090
- City of Wichita Traffic Maint. 268-4034
- Conoco Pipeline Co. 1-800-231-2551
- Southern Star Pipeline Co. 529-6000
- Phillips Pipeline Co. 1-800-766-8230
- Jayhawk Pipeline Co. 1-888-542-9575

2. Utility service lines, poles, valve boxes, meters, and enclosures are to be adjusted as necessary by others prior to construction unless the plans specifically call for their adjustment by the Contractor or unless the plans specifically identify a utility to be adjusted by its owner during construction. Existing utilities and their location, as shown on the plans, represent the best information obtainable for design. The contractor will be required to work around existing utilities within the right-of-way which do not conflict with proposed construction.

3. Trees and shrubs in public right-of-way which are in direct conflict with proposed new construction shall be removed by the Contractor with the Engineer's approval. Trees and shrubs which are not in direct conflict with proposed new construction shall be saved and protected from damage.

4. All areas disturbed during construction with Reserves and Street R/W's shall be seeded, mulched, and fertilized as follows unless otherwise noted (Permanent Seeding):

Seed: Kansas Premium Fescue Blend: 8 lbs./1000 sq. ft.  
 Mulch: Prairie Hay: 2 tons/acre  
 Fertilizer: 12-24-12: 850 lbs./acre

All other areas disturbed during construction shall be seeded and mulched as follows (Temporary Seeding):

Seed: Rye Grass: 5 lbs./1000 Sq. Ft.  
 Mulch: Prairie Hay: 2 tons/acre

All costs associated with seeding, mulching, and fertilizing shall be included in bid item "Project Seeding." All seeding operations shall conform to City of Wichita Standard Specifications.

5. Rubble from the removal of miscellaneous structures and excess excavation which is to be wasted shall be disposed of on sites to be provided by the Contractor. These sites shall be approved by the Engineer as to suitability, appearance and site location. Locations that, in the opinion of the Engineer, will leave an unsightly appearance will not be approved. All disposal sites must be approved by the Kansas Department of Health and Environment. Material either stockpiled or disposed of in a flood plain would require a Kansas State Board of Agriculture permit. Any material dumped in waters of the United States or wetlands is subject to U.S. Corps. of Engineers permitting regulations. Any material buried or stockpiled beyond approved construction limits would require additional archaeological investigations unless buried in a previously approved borrow location.

6. The Contractor shall be responsible for preserving property irons. The Contractor will be required to re-establish any property irons which are damaged or destroyed by his construction operations. Such irons shall be re-established by a licensed land surveyor in accordance with state law.

7. A saw cut of at least one-half the depth of existing surface courses of one-fourth the depth of the existing total pavement thickness shall be provided at locations where proposed construction abuts an existing surface course or pavement for which partial removal of that surface or pavement is required. Sawn joint to facilitate removal within three (3) feet of existing joints will not be permitted and for such instances the limits of removal shall extend to the existing joint. Such saw cuts will not be paid for directly and this cost shall be considered as subsidiary to the removal of the surface or pavement.

8. All existing and proposed erosion control measures including silt fencing, erosion control mat, straw bales, inlet barriers, and constant entrance shall be maintained throughout construction by the contractor and until project is accepted by the City of Wichita. The on-site engineer shall complete weekly reports on the status of erosion control measures. The contractor shall be required to comply with maintenance and/or replacement of erosion control measures as determined by the on-site engineer until project is accepted by City of Wichita. Maintenance and/or replacement of erosion control measures to be paid by U.S. bid item "Erosion Control BMP's."

**STREET PAVING FOR 45TH STREET SOUTH & INCIDENTAL STORM WATER SEWER**

to serve

**ANGEL FIRE ADDITION - PHASE IV**

45th Street South from the east line of Lot 11, Block B, east to the east line of Leonine, and on Leonine from the north line of 45th Street South, south to the north line of Lot 18, Block C, 45th Street South Ct. from the south line of 45th Street South, south to and including the cul-de-sac

**CITY OF WICHITA, KANSAS**

James L. Armor, P.E. Acting City Engineer

Project Number

**472-84126**

O.C.A. Number

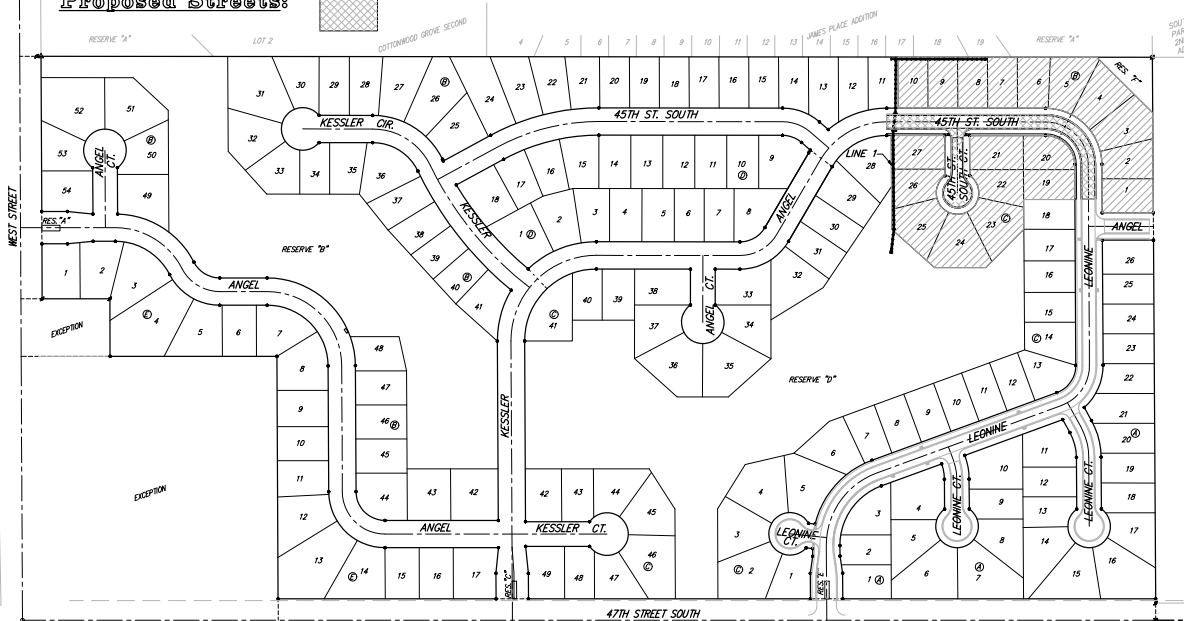
**765922**

Project Earthwork Totals  
 Excavation = 549 C.Y.  
 Loose Fill = 370 C.Y.  
 Compacted Fill = 136 C.Y.  
 Borrow Excavation = 94 C.Y.  
 Total Project Length  
 778 L.F. = 0.15 Miles

Benefit District:



Proposed Streets:



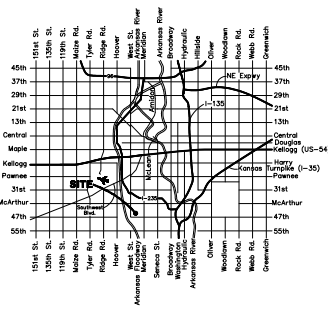
**Benchmark**

BM #1: C.O.W. Disc top of Curb adjacent to FH between Lot's 10 & 11, Block C.  
 Elevation = 93.70 City Datum

BM #2: City of Wichita Disc adjacent to FH on NE Corner of Leonine & Angel.  
 Elevation = 94.82 City Datum

**Sheet Index**

Title Sheet	1
35' Pavement Detail	2
24' Pavement Detail	3
Sign Detail	4
Miscellaneous Detail	5
45th Street South	6
Leonine	7
45th Street South Ct.	8
SWS Line 1	9-10
Std. Type 1A Single Inlet Detail	11
Std. Type 1A Double Inlet Detail	12
Standard Manhole Detail	13
Manhole Ring & Lid Detail	14
Special Yard Inlet Detail	15
RC Headwall Detail	16
Easement Grading Plan	17
Erosion Control Plan	17
Erosion Control BMP's	18-21
Earthwork Cross Sections	22-23
Copy of Plat	24



**Vicinity Map**



Baughman Company, P.A. 315 Elm St. Wichita, KS 67211 P 316240-7211 F 316240-0146  
 ENGINEERING | SURVEYING | PLANNING | LANDSCAPE ARCHITECTURE