

**Benchmarks**

**SITE BENCHMARK**  
 \*Chiseled on Top of  
 Sidewalk, Southwest Corner of  
 Property. Elevation=1371.30  
 (NAVD 88)

Sta. 0+00.0, Begin Line 1.  
 Begin construction of 15" SWS Line.  
 Connect to existing curb inlet. Core,  
 grout, seal, etc. per City of Wichita  
 Specifications.  
 Northing- 2980.96 Easting- 10173.43

**CAUTION!**  
 Existing Waterline, Phone  
 Line and Gas Line. Depths  
 and Locations Unknown.

**Very Important Note:**

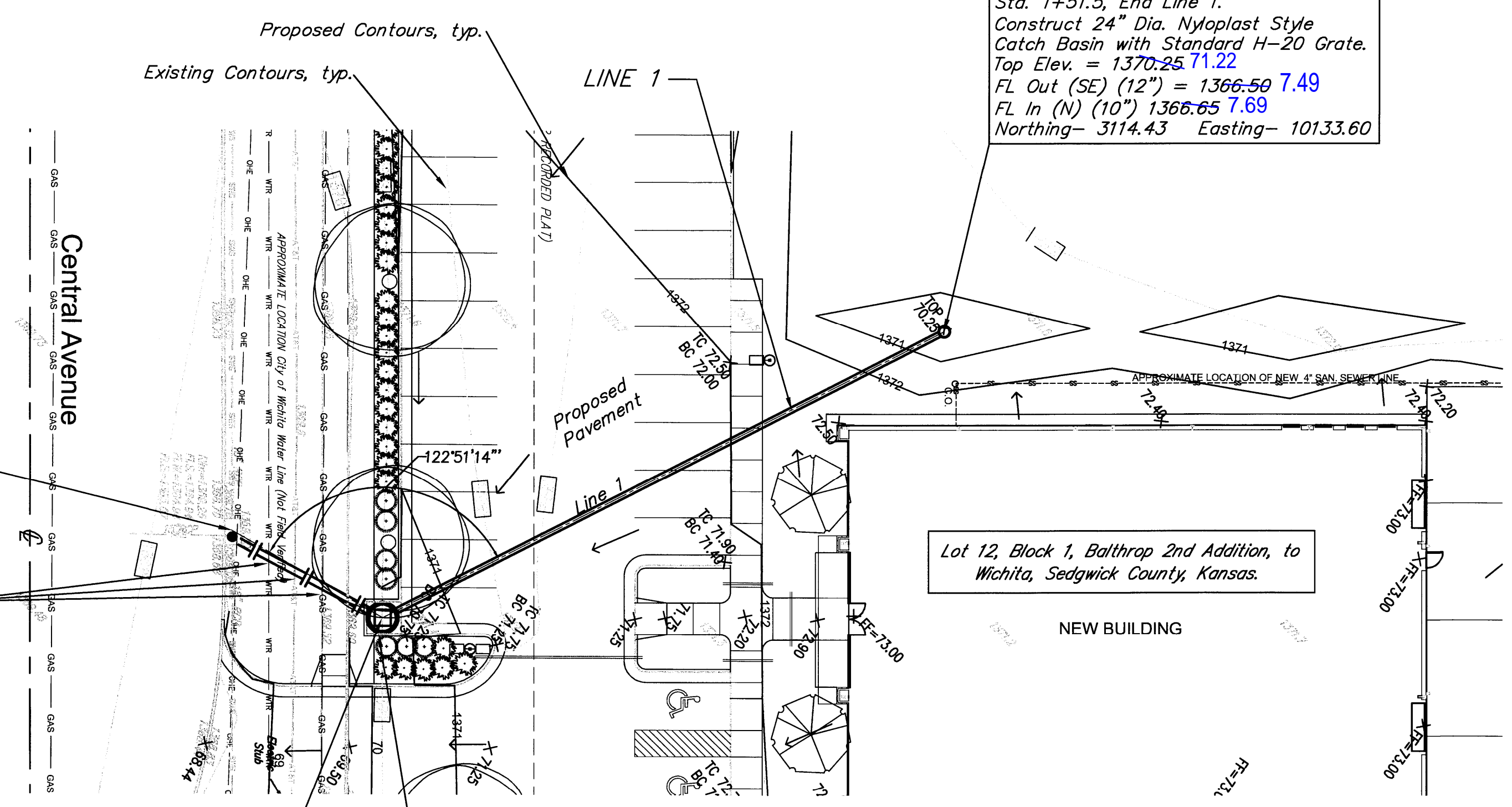
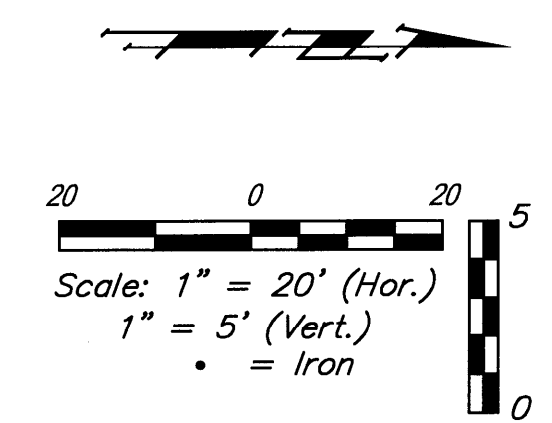
Contractor to expose ALL Utilities  
 prior to construction of Hydroworks  
 HG5 manhole. Verification of utility  
 elevations and locations required so  
 flowline corrections can be made, if  
 needed.

Verify Top Elev. with Grading Plan  
 Sta. 0+32.8, Line 1  
 Construct Hydroworks HG5 manhole w/  
 Heavy Duty Inlet Frame and Logo Grate  
 (60" dia.).  
 FL Out (SW) (15") = 1366.00.64  
 FL In (NW) (12") = 1366.20.84  
 Top Elev. = 1370.65.92  
 Northing- 3009.59 Easting- 10189.38

Construct 12" tall curb around manhole,  
 after manhole is installed. Place curb top  
 4" above top of grate. Install #4 rebar  
 (top and bottom) continuous in curb.

**Important Note:**  
 Inner Chamber / Baffle system for  
 the Hydroworks HG5 will be installed  
 at a later time.

Verify Top Elev. with Grading Plan  
 Sta. 1+51.5, End Line 1.  
 Construct 24" Dia. Nyloplast Style  
 Catch Basin with Standard H-20 Grate.  
 Top Elev. = 1370.25.71.22  
 FL Out (SE) (12") = 1366.50.7.49  
 FL In (N) (10") 1366.65.7.69  
 Northing- 3114.43 Easting- 10133.60



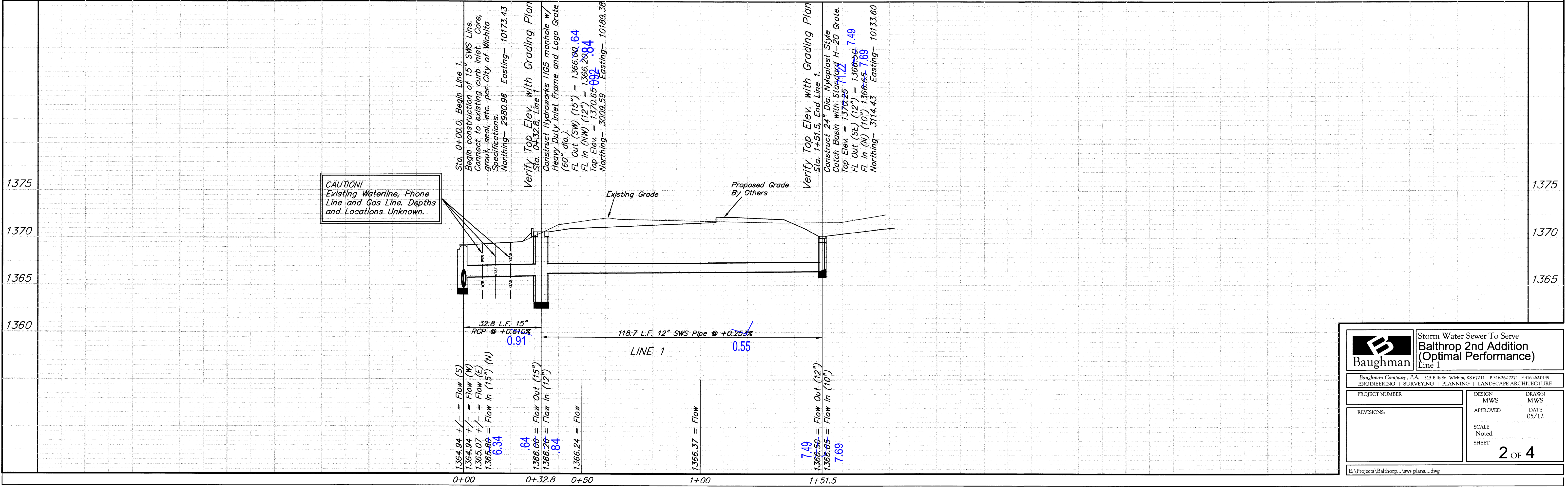
Note: Baffles and plates left out of HG5 per General Contractor.

Per Scott Lindebak at this time the baffles & plates were not needed.  
 As the rest of the lot is developed then the baffles & plates would need  
 to be installed in the HG5 manhole at that time. At this time less than  
 an acre has been disturbed.

Contractor Shall Follow All Applicable  
 Best Management Practices (BMP)  
 For Erosion Control.



Contractor To Use Extreme Caution  
 When Excavating Near Utility Lines.  
 Contractor To Hand Dig To Expose All  
 Utility Lines Prior To Construction.  
 Verify Depth To Determine Any Conflict.



		Storm Water Sewer To Serve <b>Balthrop 2nd Addition</b> (Optimal Performance) Line 1	
Baughman Company, P.A. 315 Ellis St. Wichita, KS 67211 P 316-262-2271 F 316-262-0149 ENGINEERING   SURVEYING   PLANNING   LANDSCAPE ARCHITECTURE			
PROJECT NUMBER	DESIGN	DRAWN	
	MWS	MWS	
REVISIONS:	APPROVED	DATE	05/12
	SCALE	Noted	
	SHEET		
			<b>2 OF 4</b>