

# PRIVATE SANITARY SEWER IMPROVEMENTS DOUGLAS BLOCK URBAN PARK

## Lots 1 and 3 on Lawrence Ave., N.A. English's Addition PROJECT NUMBER 2117PPS (607853)

T. Mason - City of Wichita, Field Inspector  
Stubs  
Release Date: 11/09/2012  
: APRosas 11/13/2012



WDM Architects P.A.  
105 North Washington  
Wichita, KS 67202-2815  
T 316.262.4700  
F 316.262.0002  
wdmarchitects.com

we do more

### GENERAL NOTES

- Contractor will be required to provide a minimum notice of 72 hours to utility companies prior to starting any excavation as follows:  
  
Kansas One-Call 687-2470  
  
The Contractor must notify the following in case of an emergency:  
  
Cox Communications 262-0661  
Kansas Gas Service 383-8600  
Westar Energy 383-8600  
AT&T 1-800-286-8313  
City of Wichita Water Utility 268-6000  
Black Hills Energy 1-800-303-0357
- Existing utilities and their location, as shown on the plans, represent the best information obtainable for design. Location information has been obtained from the various utility companies and is either from company record drawings or company-provided field locations. The Contractor will be required to work around existing utilities within the right-of-way which do not conflict with proposed construction.
- A saw cut of the full depth of existing surface courses or pavement thickness shall be provided at locations where proposed construction abuts an existing surface course or pavement for which partial removal of that surface or pavement is required, except when such saw cuts are within three (3) feet of an existing joint the limits of removal shall be extended to the existing joint.
- This project is limits of a larger project which will include building construction. A Storm Water Pollution Prevention Plan is on file with the Kansas Department of Health and Environment.
- This project is to be constructed in accordance with City of Wichita Standard Specifications for the Construction of City Projects and Policy on Construction of Infrastructure by Private Contract.
- No work shall begin on this project before required bonds are submitted to the City of Wichita, and the project inspector has been notified.
- All areas of public R/W disturbed by construction of this project are to be restored in accordance with Administrative Regulation AR 6.5 of the City of Wichita.
- One-lane traffic on Second St. in each direction shall be maintained at all times. Traffic control shall be positioned to the latest MUTCD standard specifications.

### INDEX OF SHEETS

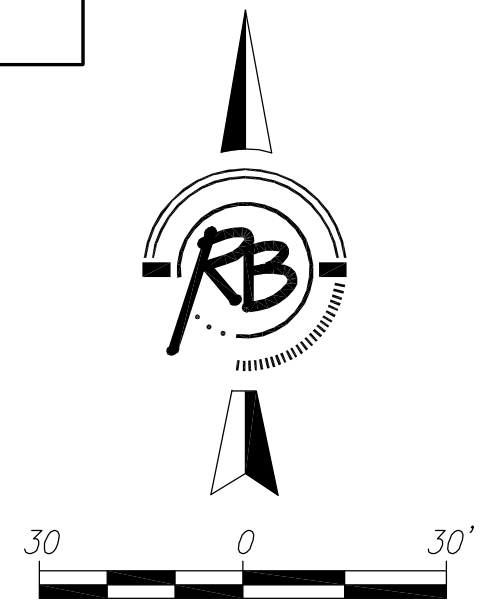
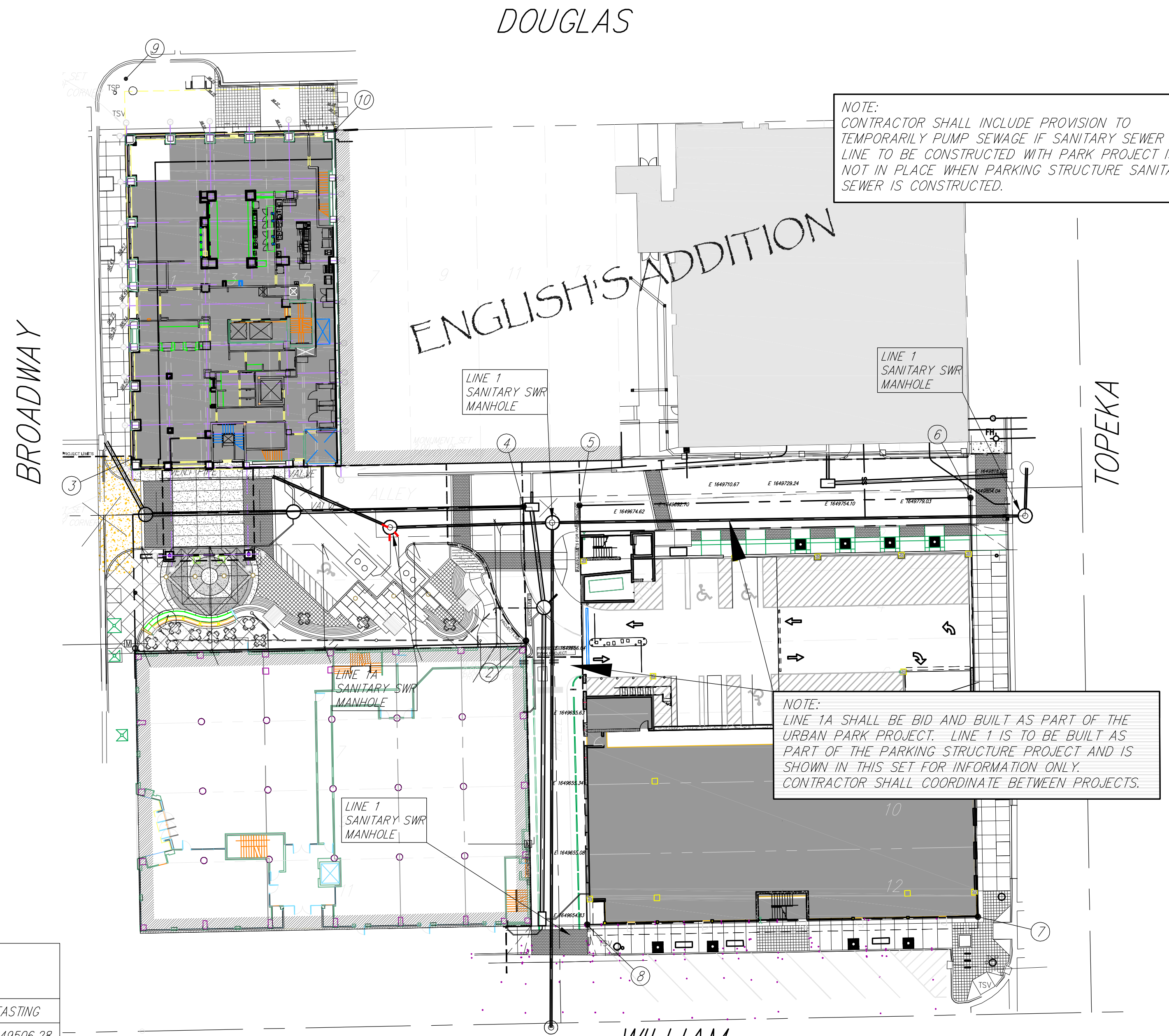
(CITY SUBMITTAL INDEX)

- TITLE SHEET
- SANITARY SEWER PLAN & PROFILE
- MANHOLE DETAILS

### BENCHMARKS

BENCHMARK #1: CHISELED SQUARE ON THE TOP OF CURB ON THE SOUTH SIDE OF ALLEY ON WEST SIDE OF TOPEKA. 1/2 BLOCK BETWEEN DOUGLAS AND WILLIAM  
ELEVATION = 1297.01 (NAVD88)

BENCHMARK #2: CHISELED SQUARE ON TOP OF CURB ON THE WEST CURB RETURN AT THE SOUTHWEST CORNER OF TOPEKA AND WILLIAM  
ELEVATION = 1296.32 (NAVD88)



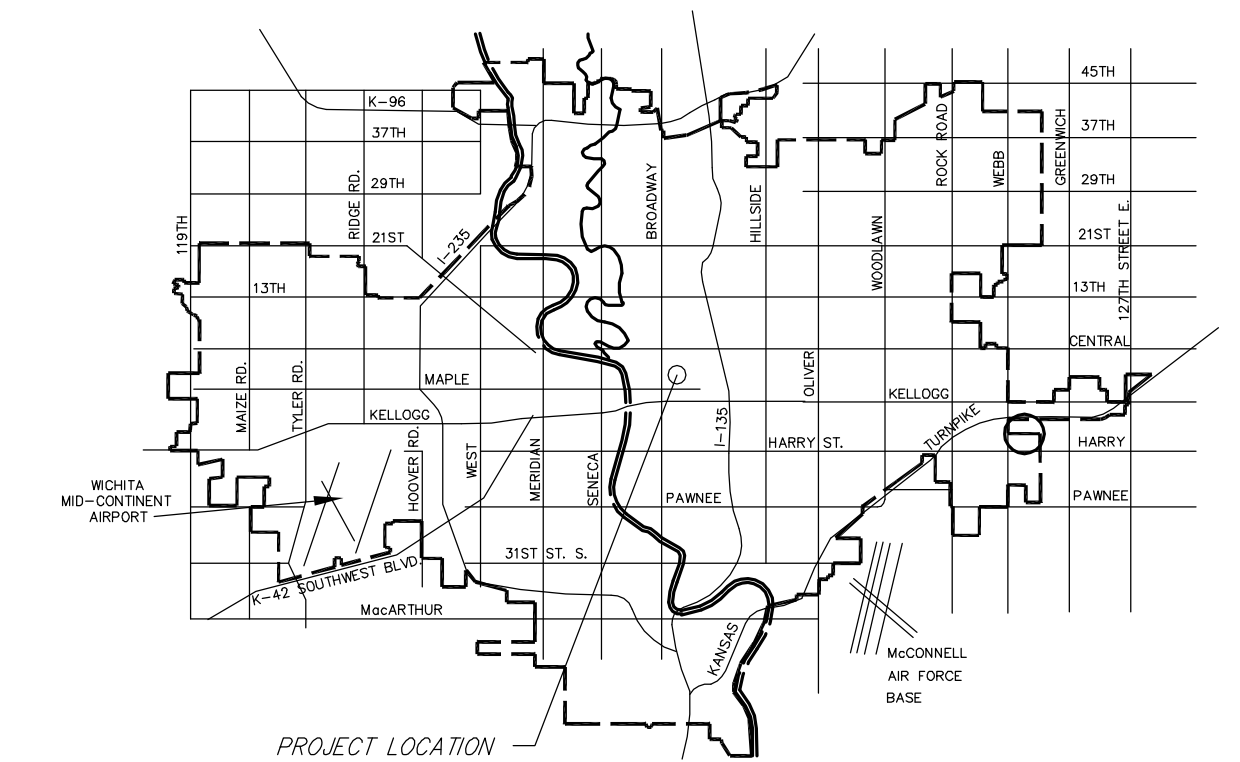
APPROVED AS NOTED  
BY CITY ENGINEER OF WICHITA

Sanitary Sewers *Julianne Kelloman*  
Storm Sewers *12-12-11*

Driveway Approaches \_\_\_\_\_  
Water Mains \_\_\_\_\_  
Paving \_\_\_\_\_

NOTE TO CONTRACTORS

Inspection and testing for this project are to be provided by a Licensed Consulting Engineering Firm under contract with the Owner/Developer. Said inspection to be in accordance with the City of Wichita standard construction engineering practices and certified by a Licensed Professional Engineer. No work shall be performed in dedicated easements or public right-of-way by the Contractor without such inspection, nor shall any work be commenced without written authorization by the City Engineer.

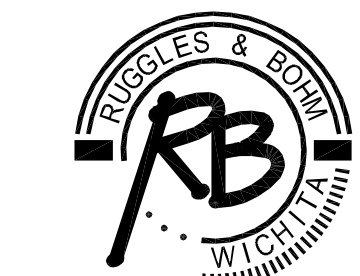


COORDINATE CONTROL TABLE				
CONTROL NO.	LOCATION	DESCRIPTION	NORTHING	EASTING
1	SW CORNER OF LOT 3, N.A. ENGLISH'S ADDITION	(SET CORNER)	1685555.62	1649506.28
2	SE CORNER OF LOT 3, N.A. ENGLISH'S ADDITION	(SET CORNER)	1685558.38	1649646.16
3	NW CORNER OF LOT 1, N.A. ENGLISH'S ADDITION	(SET CORNER)	1685603.61	1649505.41
4	NE CORNER OF LOT 1, N.A. ENGLISH'S ADDITION	(SET CORNER)	1685606.35	1649645.29
5	NW CORNER OF LOT 2, N.A. ENGLISH'S ADDITION	(SET CORNER)	1685606.75	1649665.29
6	NE CORNER OF LOT 2, N.A. ENGLISH'S ADDITION	(SET CORNER)	1685609.49	1649805.17
7	SE CORNER OF LOT 12, N.A. ENGLISH'S ADDITION	(SET CORNER)	1685459.58	1649807.86
8	SW CORNER OF LOT 12, N.A. ENGLISH'S ADDITION	(SET CORNER)	1685456.81	1649668.00
9	NW CORNER OF LOT 1, N.A. ENGLISH'S ADDITION	(SET CORNER)	1685739.56	1649502.93
10	NE CORNER OF LOT 5, N.A. ENGLISH'S ADDITION	(SET CORNER)	1685741.03	1649577.88

ASBUILT DRAWINGS  
Contractor: Dondlinger Construction  
Superintendent: Mark Doher  
Inspector: Dakota Zimmerman (Ruggles & Bohm, P.A.)



CITY OF WICHITA, KANSAS  
JAMES L. ARMOUR, P.E., CITY ENGINEER



Ruggles & Bohm, P.A.  
Engineering, Surveying, Land Planning  
924 North Main (316) 264-8008  
Wichita, Kansas 67203 (316) 264-4621 fax  
www.rbkansas.com E-mail: info@rbkansas.com

DOUGLAS BLOCK POCKET PARK

Wichita, KS

PRINTS ISSUED  
09.02.11 - PRICING SET  
10.28.11 - FOR BID  
01.20.12 - ADDENDUM #1  
02.10.12 - ASI #1  
05.30.12 - ASI #2  
07.20.12 - ASI #3

WDM No. 11002  
drawn: bdt  
checked: kw/bdt

C3.0

# BENCHMARKS

BENCHMARK #1: CHISELED SQUARE ON THE TOP OF CURB ON THE SOUTH SIDE OF ALLEY ON WEST SIDE OF TOPEKA, 1/2 BLOCK BETWEEN DOUGLAS AND WILLIAM ELEVATION = 1297.01 (NAVD88)

BENCHMARK #2: CHISELED SQUARE ON TOP OF CURB ON THE WEST CURB RETURN AT THE SOUTHWEST CORNER OF TOPEKA AND WILLIAM ELEVATION = 1296.32 (NAVD88)

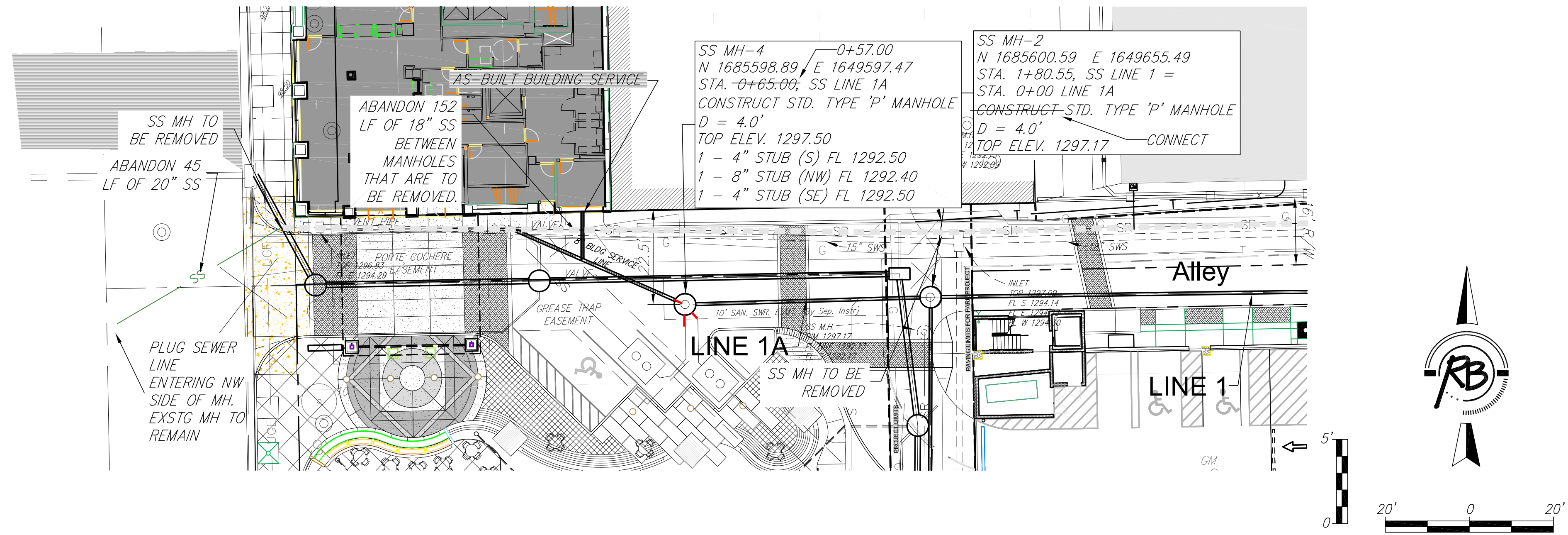


WDM Architects P.A.  
105 North Washington  
Wichita, KS 67202-2815  
T 316.262.4700  
F 316.262.0002  
wdmarchitects.com

we do more

# DOUGLAS BLOCK POCKET PARK

Wichita, KS

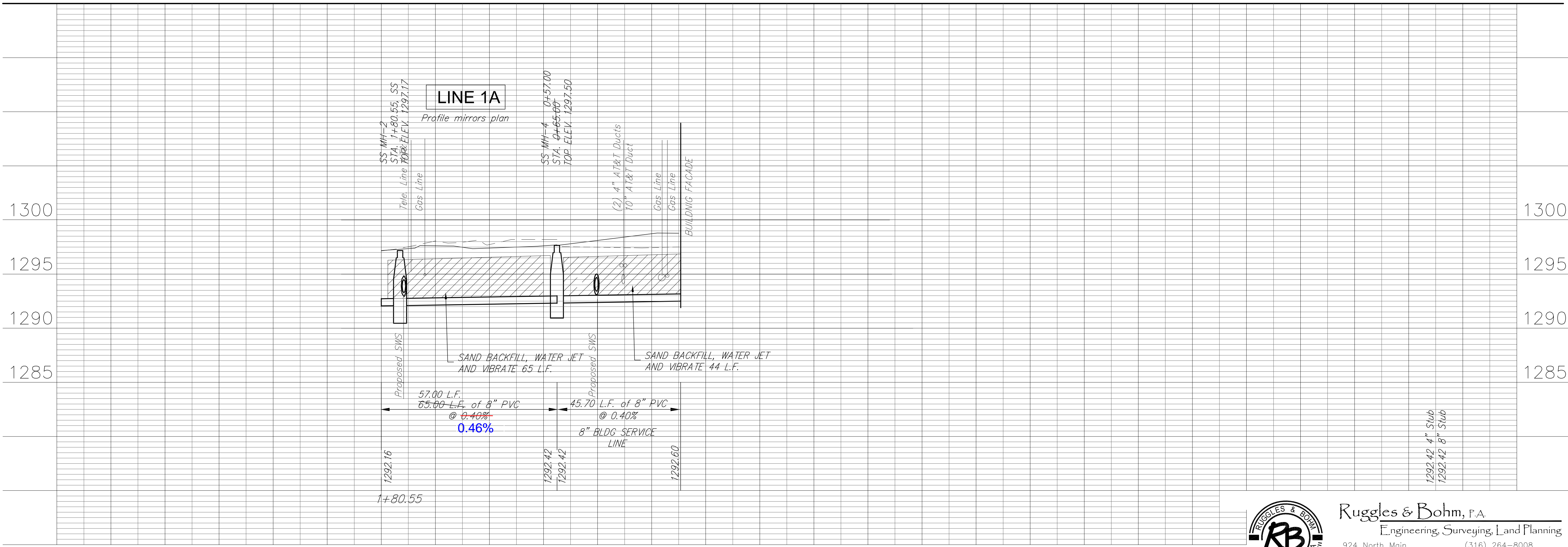


Existing Sanitary Sewer to be Abandoned in place per City of Wichita Specifications where not in conflict with construction of proposed Storm Sewer or Sanitary Sewer.

Contractor shall pump or haul Sanitary Sewer during construction.

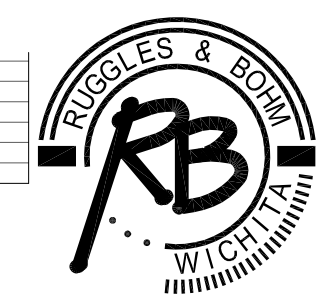
NOTE:  
LINE 1A SHALL BE BID AND BUILT AS PART OF THE URBAN PARK PROJECT. LINE 1 IS TO BE BUILT AS PART OF THE PARKING STRUCTURE PROJECT AND IS SHOWN IN THIS SET FOR INFORMATION ONLY. CONTRACTOR SHALL COORDINATE BETWEEN PROJECTS.

NOTE:  
CONTRACTOR SHALL INCLUDE PROVISION TO TEMPORARILY PUMP SEWAGE IF SANITARY SEWER LINE TO BE CONSTRUCTED WITH PARK PROJECT IS NOT IN PLACE WHEN PARKING STRUCTURE SANITARY SEWER IS CONSTRUCTED.



PRINTS ISSUED  
09.02.11 - PRICING SET  
10.28.11 - FOR BID  
01.20.12 - ADDENDUM #1  
02.10.12 - ASI #1  
05.30.12 - ASI #2  
07.20.12 - ASI #3

WDM No. 11002  
drawn: bdt  
checked: kw/bdt  
SS P&P



Ruggles & Bohm, P.A.  
Engineering, Surveying, Land Planning  
924 North Main (316) 264-8008  
Wichita, Kansas 67203 (316) 264-4621 fax  
www.rbkansas.com E-mail: info@rbkansas.com

# C3.1