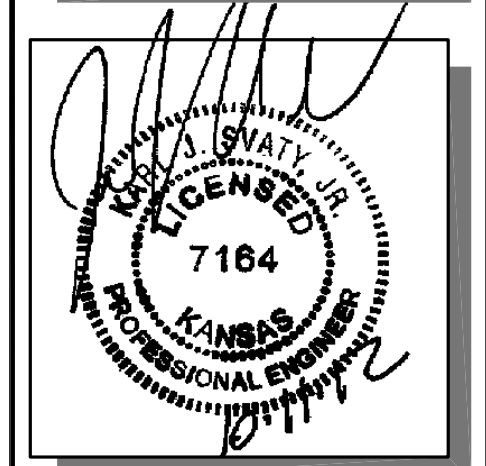


STATE	PROJECT NO.	YEAR	SHEET NO.	TOTAL SHEETS
KANSAS	87 N-0519-01	2012	70	212

MKEC
ENGINEERING
CONSULTANTS, INC.
411 N. WEBB ROAD
WICHITA, K.S. 67206
316-684-9600



BROADWAY BRIDGE AT 34TH STREET SOUTH

**PEDESTRIAN
RAIL AND
FENCE
DETAILS**
SHEET TITLE
472-84830
PROJECT NUMBER

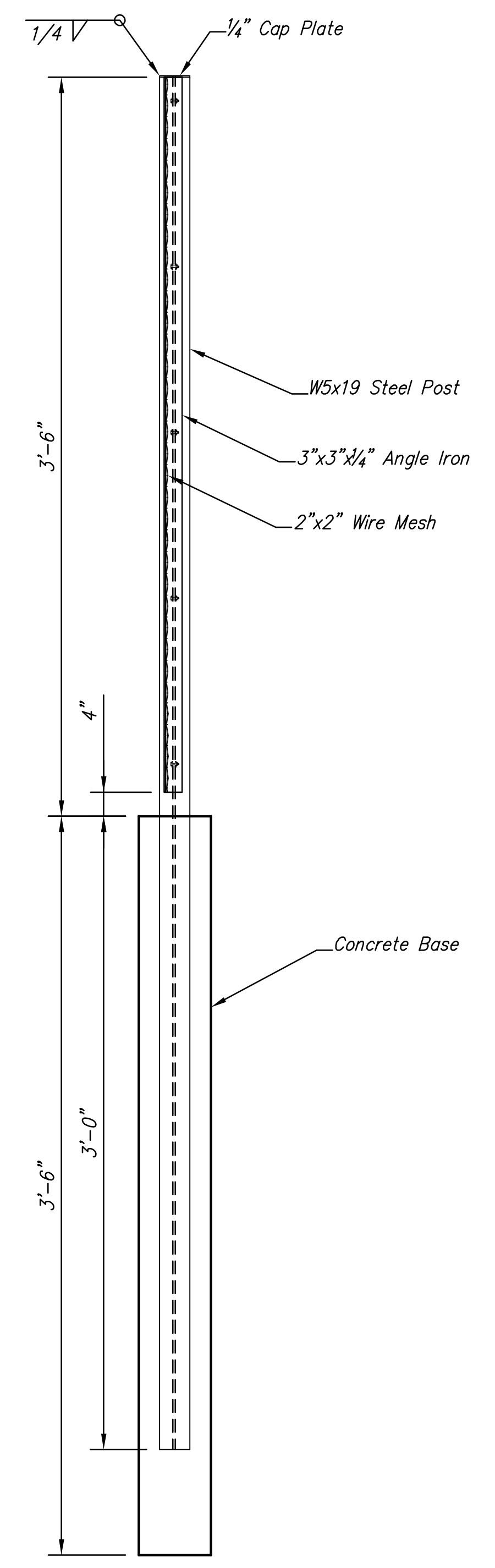
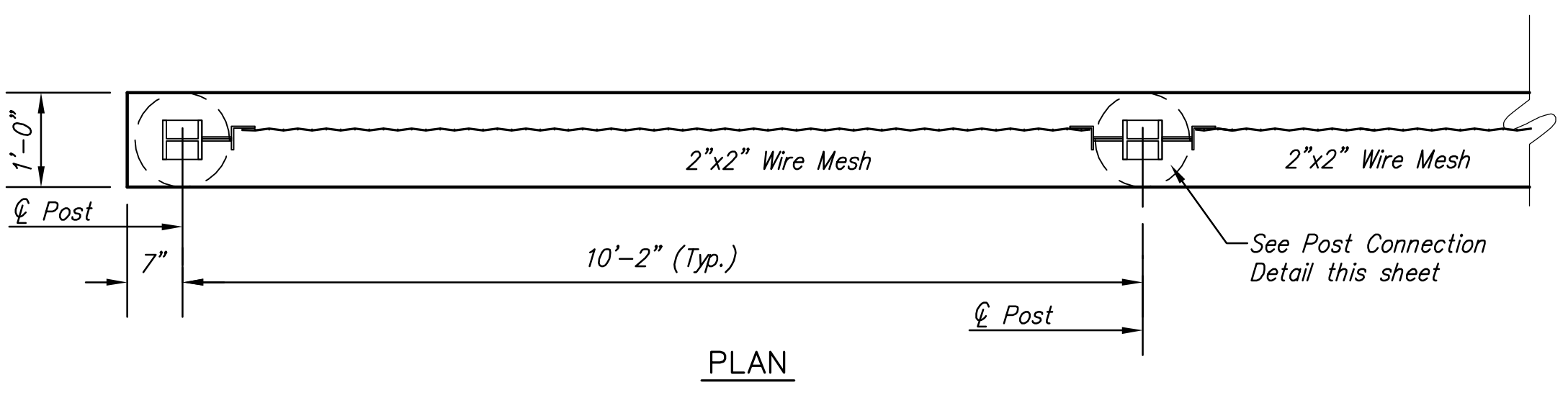
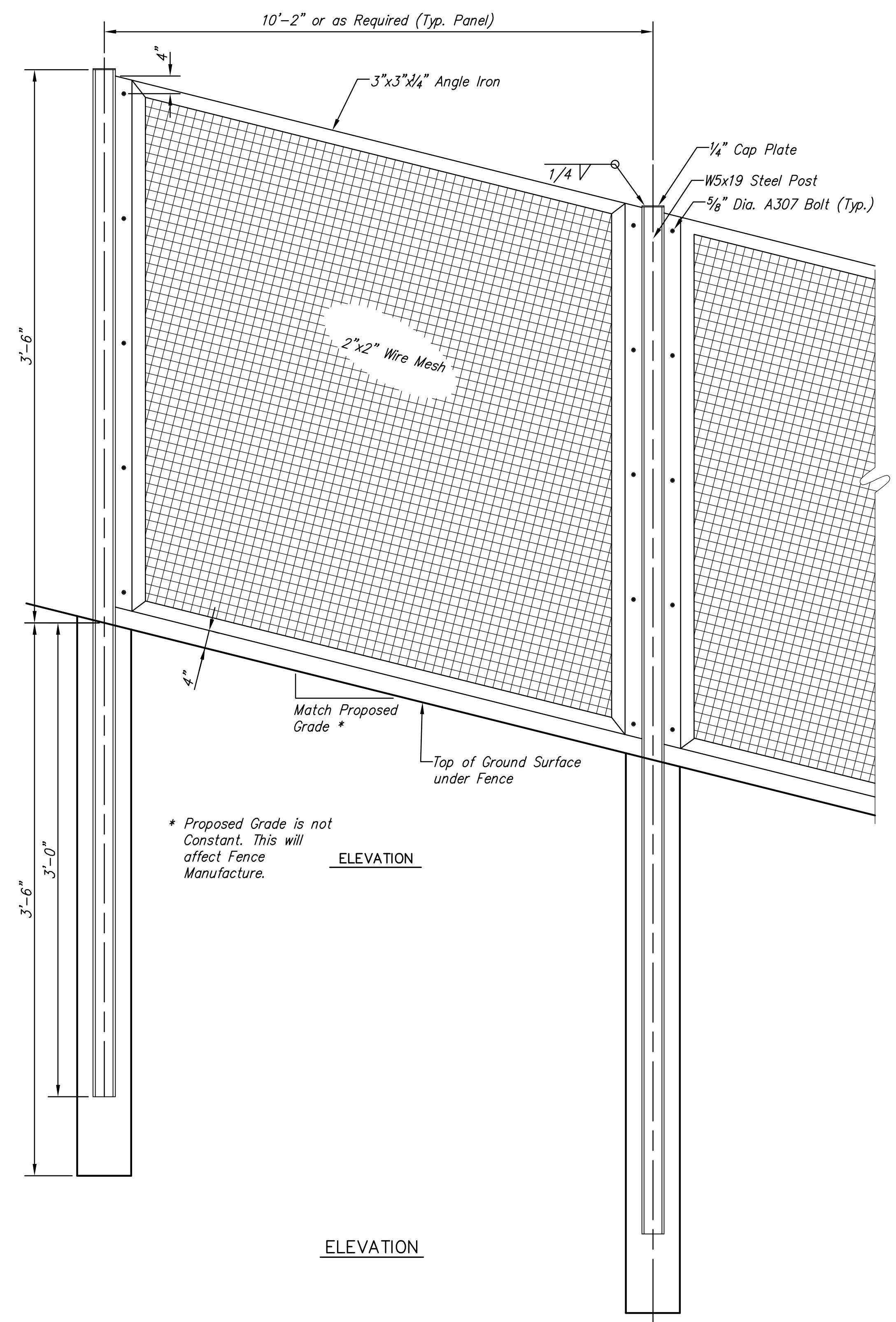
JRA
DESIGN BY
TBK
DRAWN BY
JRA
CHECKED BY

ISSUED
October 9, 2012
REVISED

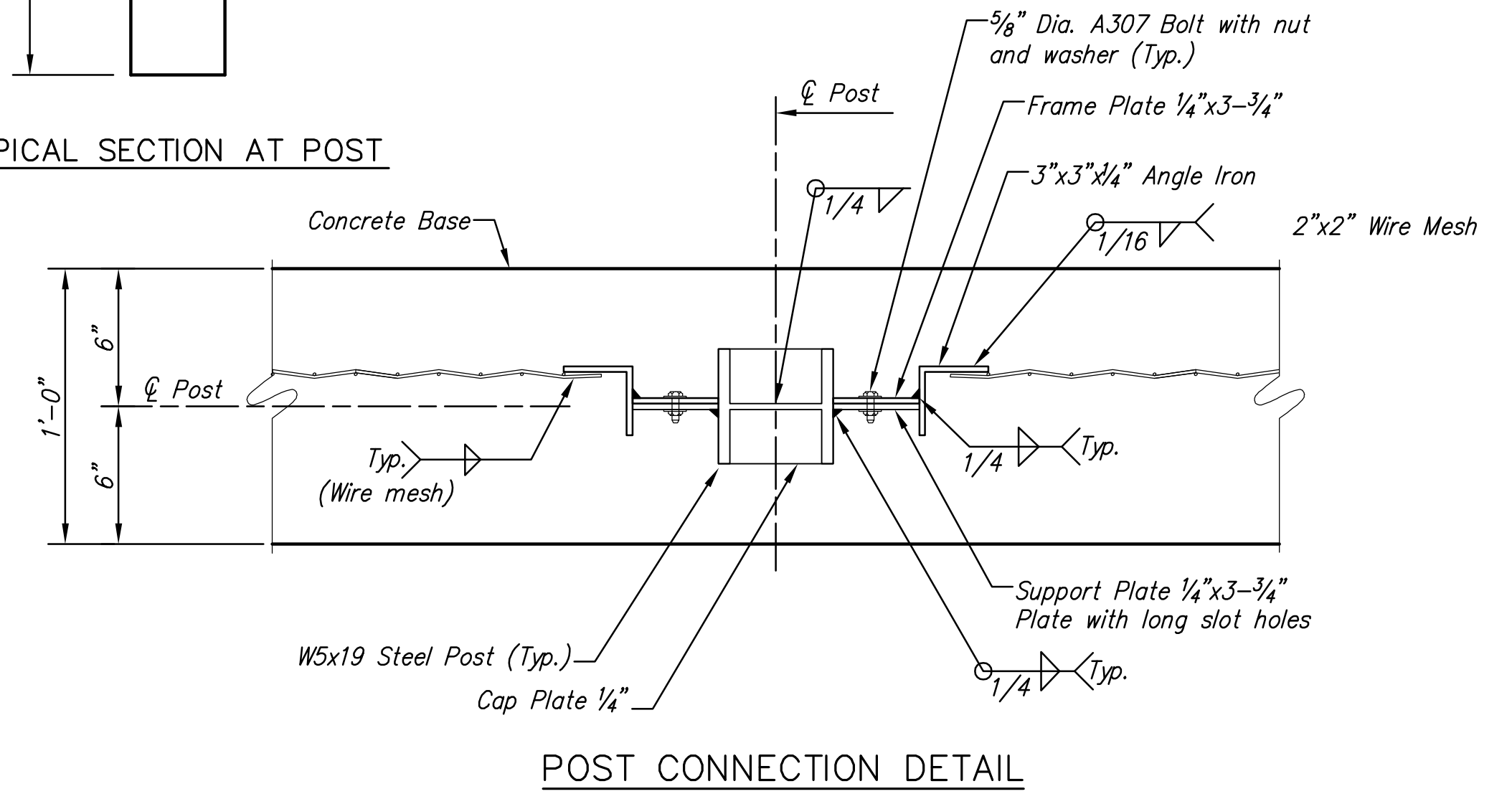
SHEET NO.
70 of 212

DESIGN DATA:

- All steel shall conform to ASTM A709, Gr. 50 or equivalent.
- Structural Bolts shall conform to ASTM A307 with nuts and washers over the long-slot hole.
- Wire Mesh shall be 2"x2" centers, 0.135 inch dia. mild steel wire. Mesh shall be welded.
- The Contractor shall submit color chart for approval by the City. The color shall be bronze.
- All parts of the railing shall be painted. The primer coat shall conform to the inorganic zinc system. Surface preparation shall be in accordance with that for structural steel. The finish coat shall be in accordance with water-borne acrylic finish coat.



TYPICAL SECTION AT POST



POST CONNECTION DETAIL

PLOTED: Thursday, October 11, 2012 @ 10:45AM

J:\Civil\09081.dwg \Details\09081 PED RAIL