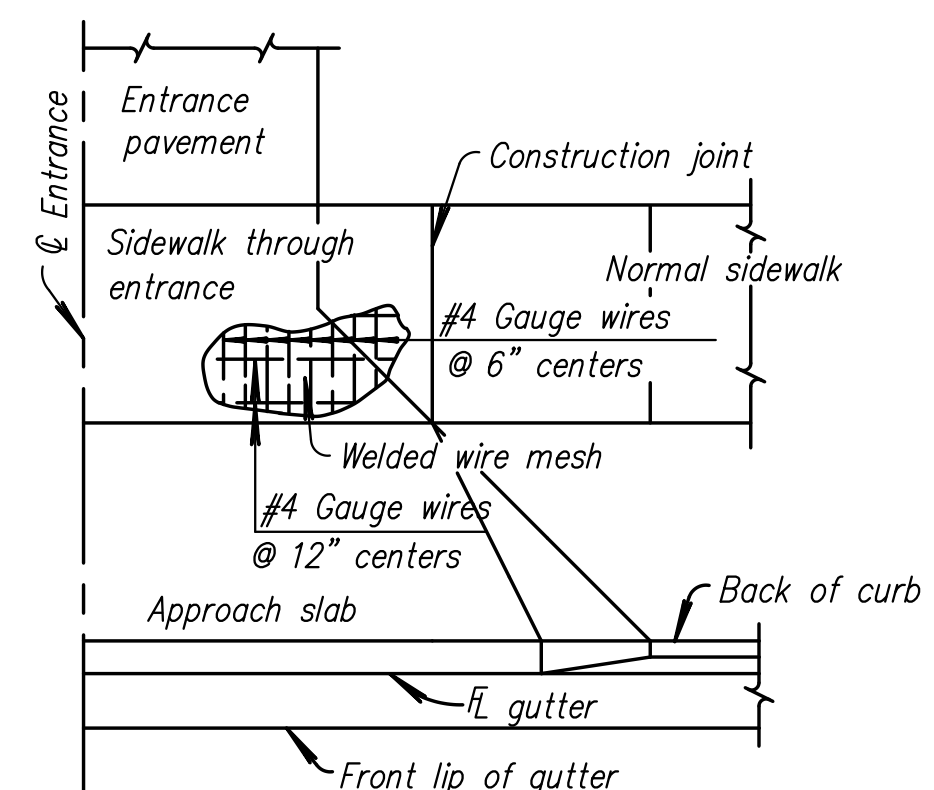
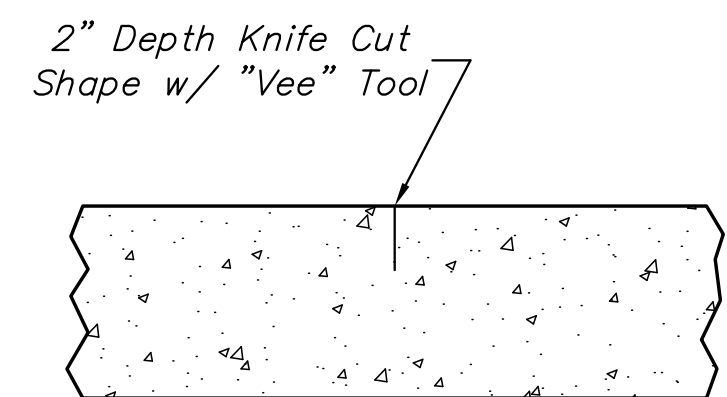


**CENTRAL AVENUE
IMPROVEMENTS FROM
135TH ST. W. TO 119TH ST. W.**

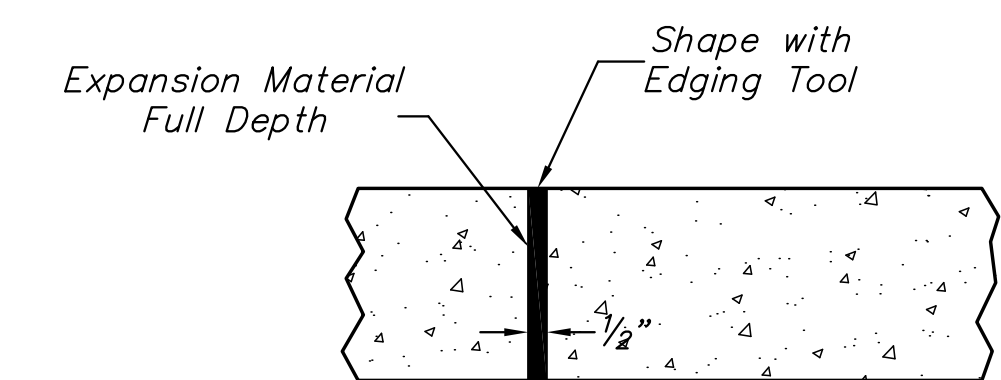


**REINFORCEMENT DIAGRAM
SIDEWALK THROUGH ENTRANCE**

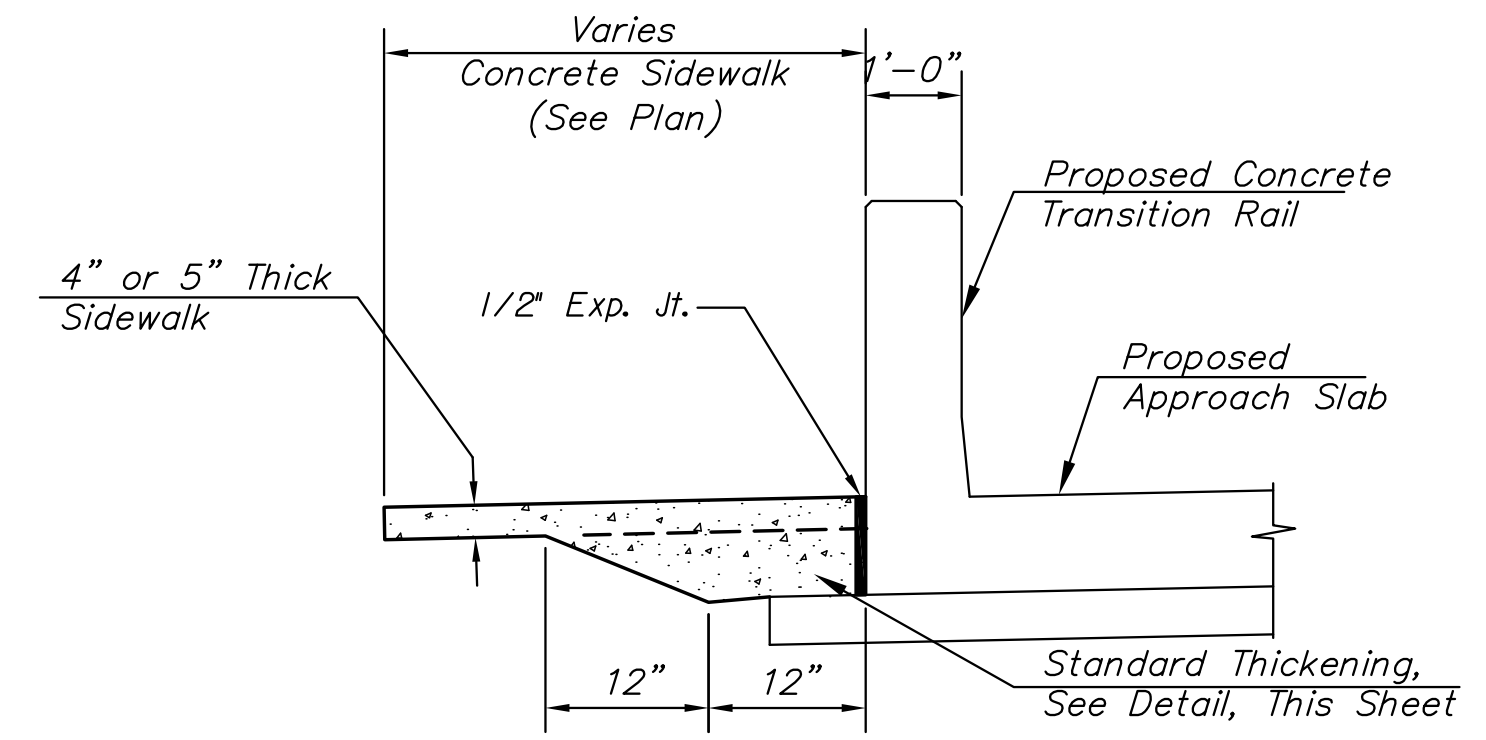


2" Depth Knife Cut
Shape w/ "Vee" Tool

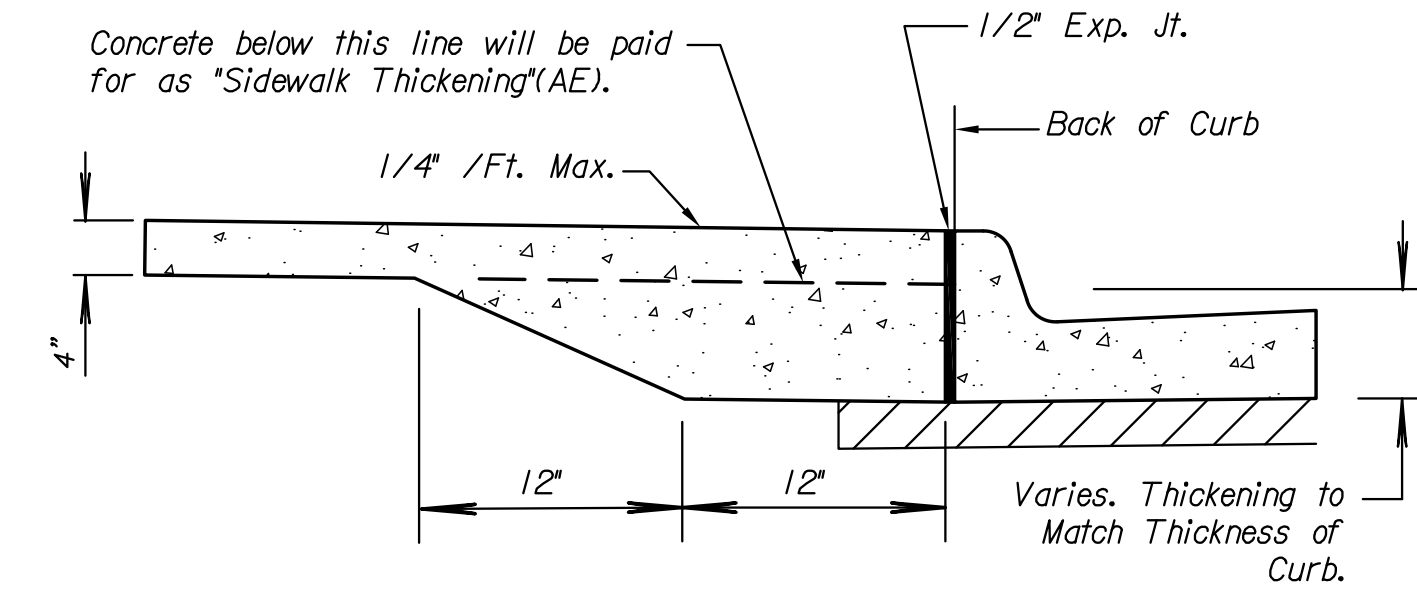
No Sawn Joints
Will Be Allowed
CONTRACTION JOINT (C.J.)



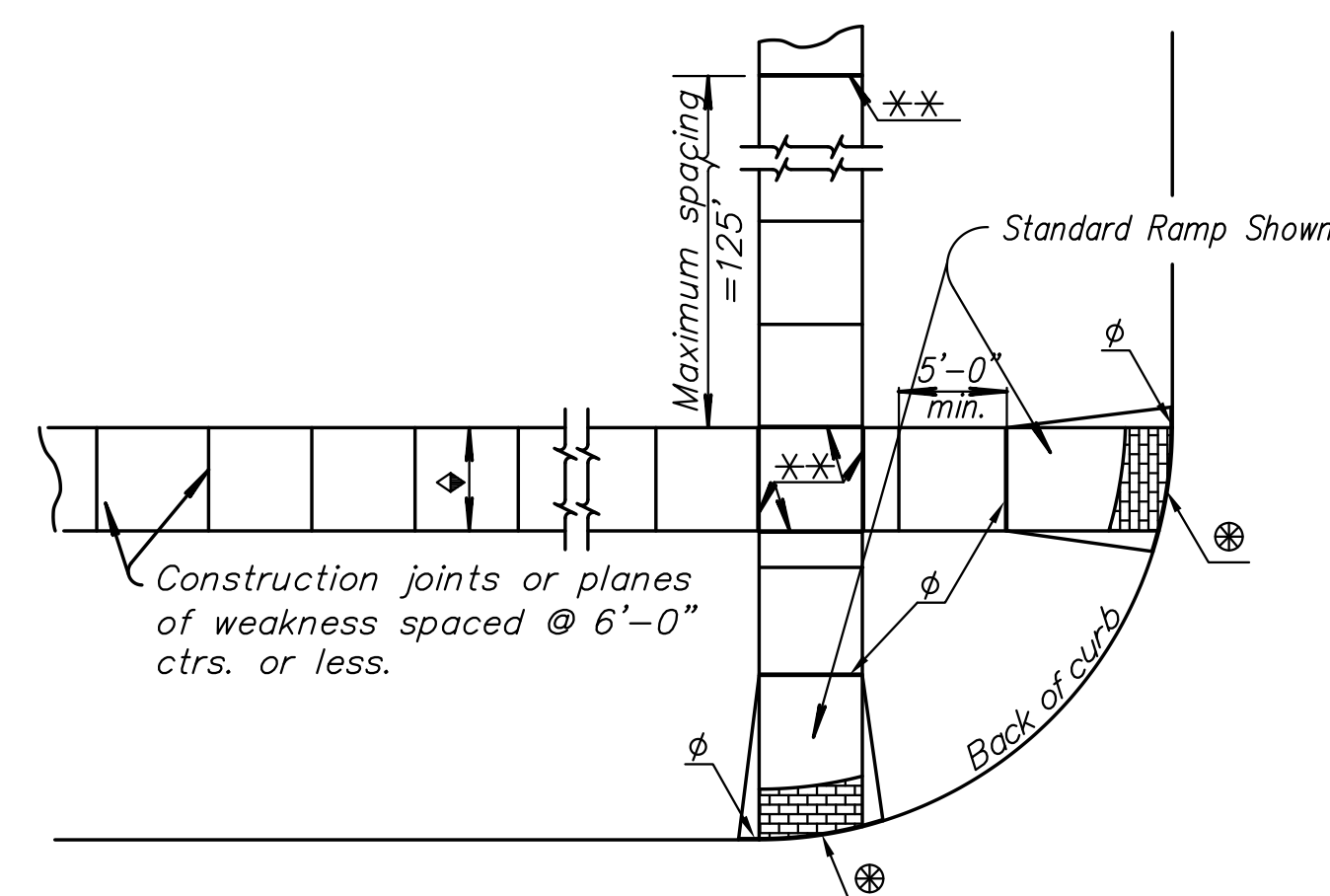
EXPANSION JOINT (E.J.)



SIDEWALK AT BRIDGE APPROACH
NOTE: Cast proposed concrete sidewalk on ledge of exist. abutment wingwall.



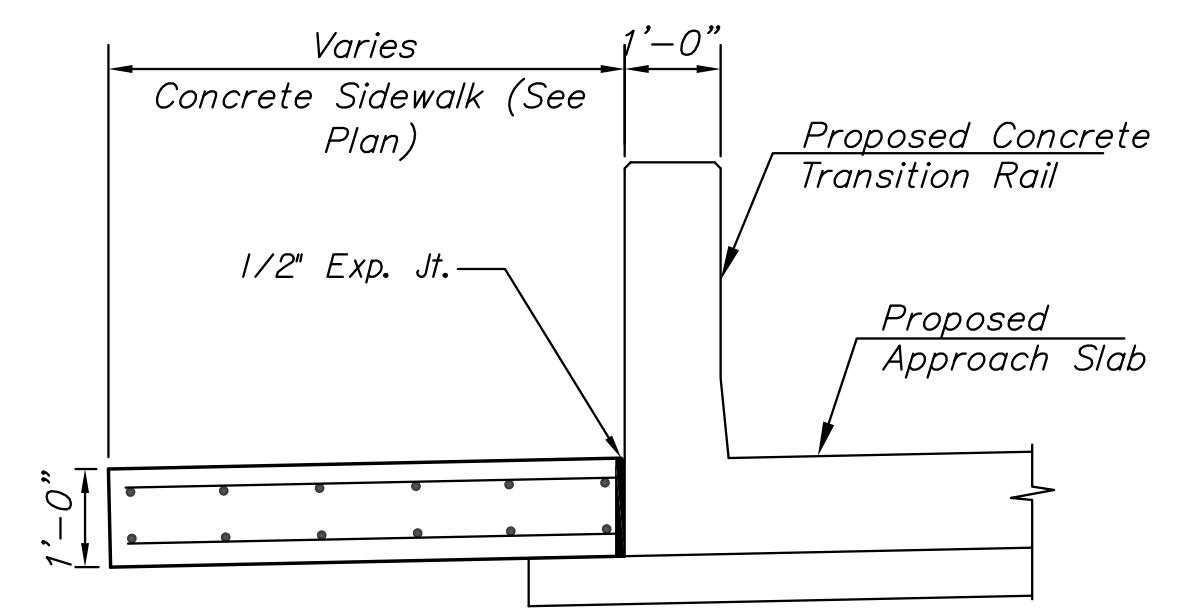
SIDEWALK SECTION AT BACK-OF-CURB
Note: All Sidewalk at Back of Curb Shall Conform to this Detail



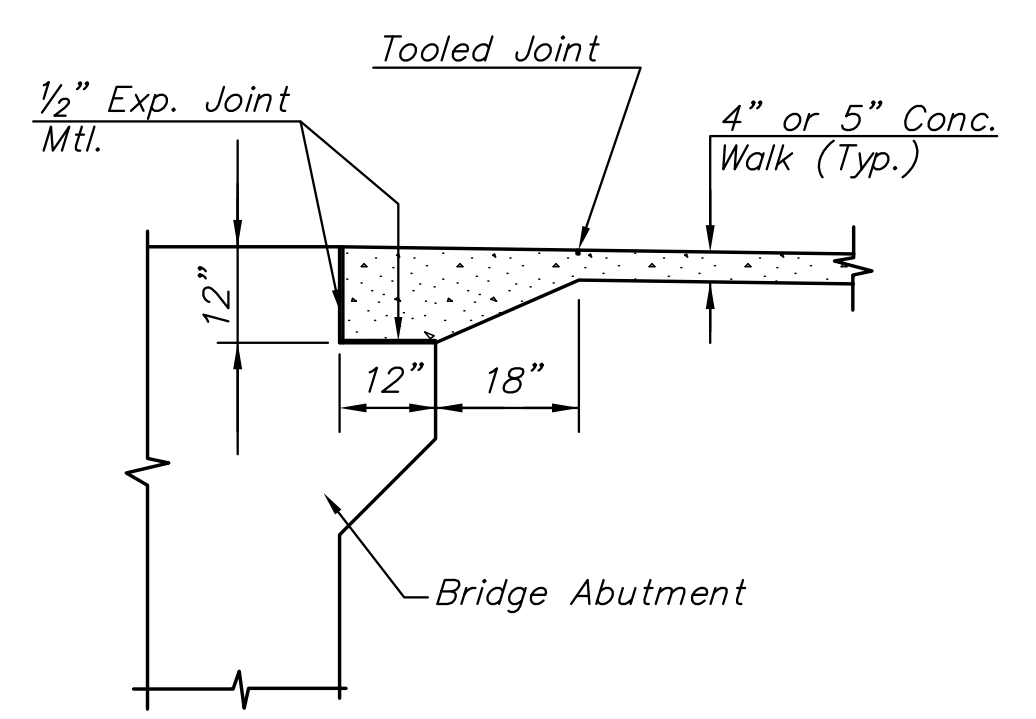
**PLAN
SIDEWALK**

NOTE:
Sidewalk shall always have a cross-slope of 1/4 inch per foot or less, even through driveways unless directed otherwise by the Engineer.

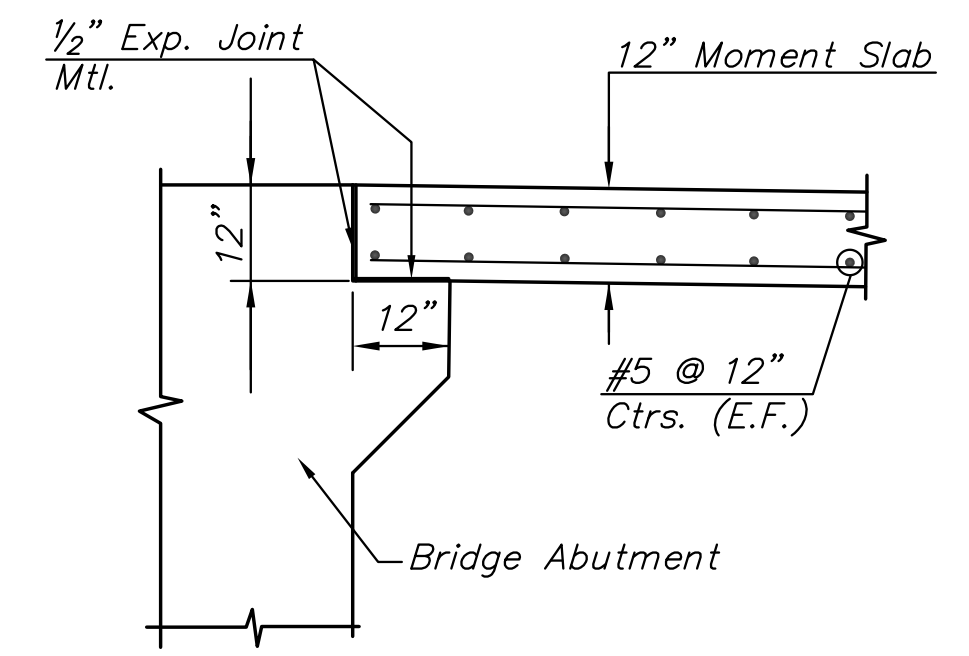
Concrete sidewalk 5", Reinf. and Concrete Sidewalk 6" Reinf. shall be reinforced with 6"x6" w4xw4 wire fabric. Concrete sidewalk 12", Reinf. shall be reinforced as shown on sheet 49.



**SIDEWALK AT BRIDGE APPROACH
(MOMENT SLAB WALK)**
NOTE: Cast proposed concrete sidewalk on ledge of exist. abutment wingwall.



SIDEWALK AT BRIDGE ABUTMENT



**SIDEWALK AT BRIDGE ABUTMENT
(MOMENT SLAB WALK)**

** Expansion joint (3/4" redwood board) located as shown.
♦ Variable width (6'-0" min.). Entrance walk to be same width as approach walk. Sidewalks shown 10'-0" wide shall be constructed with a 5" thickness. Standard sidewalk shall use 4" thickness.
φ Expansion Joint (3/4" Redwood board) placed at either back of curb line or at sidewalk line.
⊗ Detectable warning installation is typical and required on Sidewalk Ramps. Refer to Ramp Detail sheet.

**SIDEWALK
DETAILS**

SHEET TITLE
472-84017
PROJECT NUMBER

JRA
DESIGN BY
JSB
DRAWN BY
JRA
CHECKED BY

ISSUED
November 9, 2012
REVISED

SHEET NO.
56 of 220