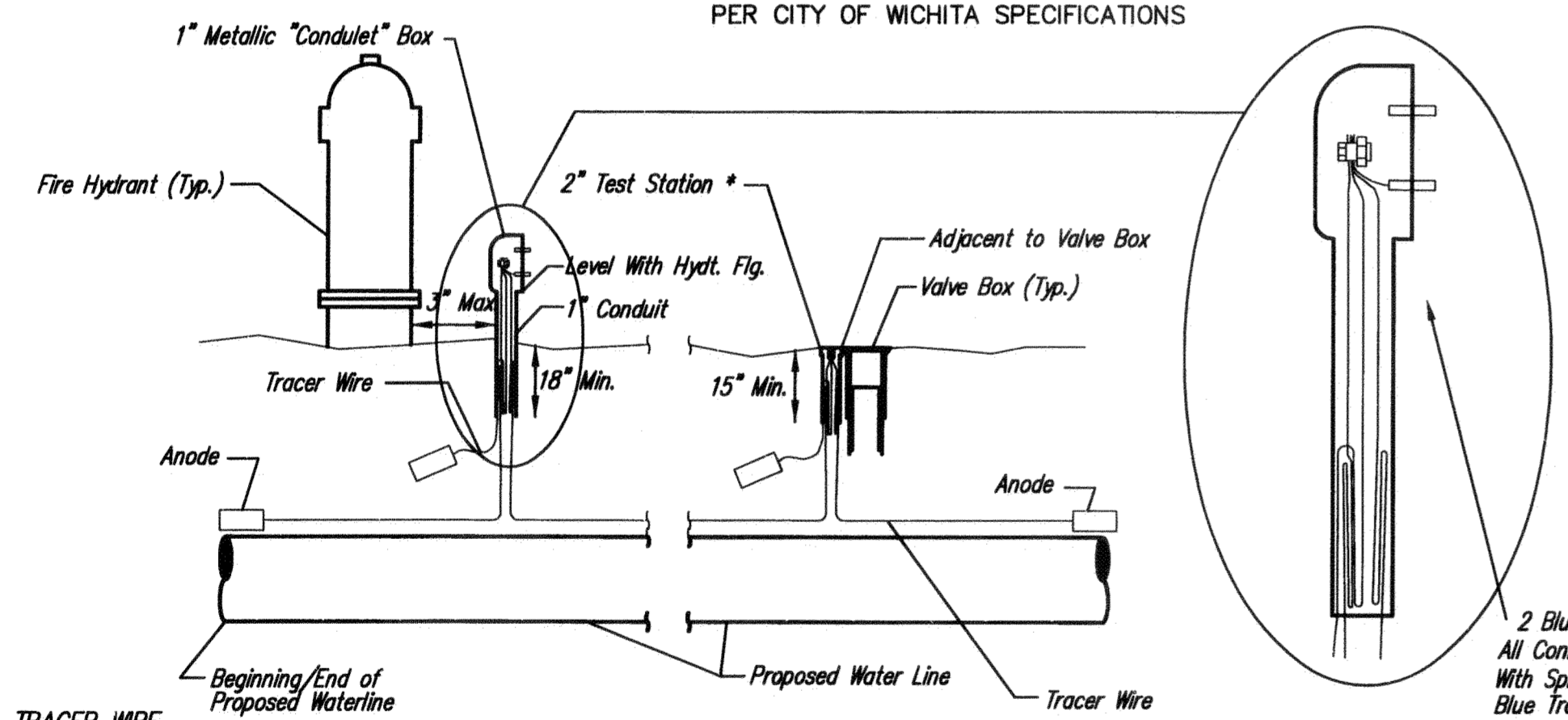


- MATERIALS LIST**
- 1- MJ ANCHOR TEE OR TANGENTIAL OUTLET (10"x 6")
 - 1- 6" MJ GATE VALVE
 - 1- 6" VALVE BOX AND VALVE STEM EXTENSION IF REQUIRED *
 - 6" DICL SJ PIPE (LENGTH VARIABLE)
 - 1- FIRE HYDRANT
 - 1- 6" ANCHOR COUPLING*
 - 2- 90° BENDS*
 - 6" DICL SJ SPOOL PIPE WITH ADEQUATE JOINT RESTRAINT *
 - CONCRETE BLOCKING (AS REQUIRED)
 - RIVER WASHED PEA GRAVEL (AS REQUIRED)

- * IF THE REQUIRED HYDRANT BURY IS IN EXCESS OF 5', BUT LESS THAN 7', CONTRACTOR SHALL USE STANDARD 5' HYDRANT BURY AND HYDRANT BARREL EXTENSIONS AS NECESSARY. IF THE REQUIRED HYDRANT BURY IS GREATER THAN 7', CONTRACTOR SHALL USE 5' HYDRANT BURY, 2-MJ 90° BENDS, 6" ANCHOR COUPLING AND 6" DICL SPOOL PIPE AS NECESSARY FOR VERTICAL ADJUSTMENT. THE CONTRACTOR SHALL PROVIDE ADEQUATE THRUST BLOCKING AT HYDRANT AND MEGALUGS, ROD AND LUG OR SIMILAR RESTRAINT BETWEEN 90° BENDS TO SECURE ALL FITTINGS DURING TESTING AND OPERATION. THE CONTRACTOR SHALL PROVIDE A VALVE STEM EXTENSION PER DETAIL THIS SHEET.
- ** CAUTION WEEP HOLES TO BE KEPT CLEAR DURING CONSTRUCTION AND BACKFILL. CONCRETE FOR THRUST BLOCKING SHALL NOT OBSTRUCT WEEP HOLES. PLACE 1 CUBIC FOOT OF RIVER WASHED PEA GRAVEL AROUND EACH WEEP HOLE.
- # CONCRETE THRUST BLOCKING SHALL BE KEPT CLEAR OF BOLTS, NUTS, AND MJ ACCESSORIES.

FIRE HYDRANT ASSEMBLY
PER CITY OF WICHITA SPECIFICATIONS



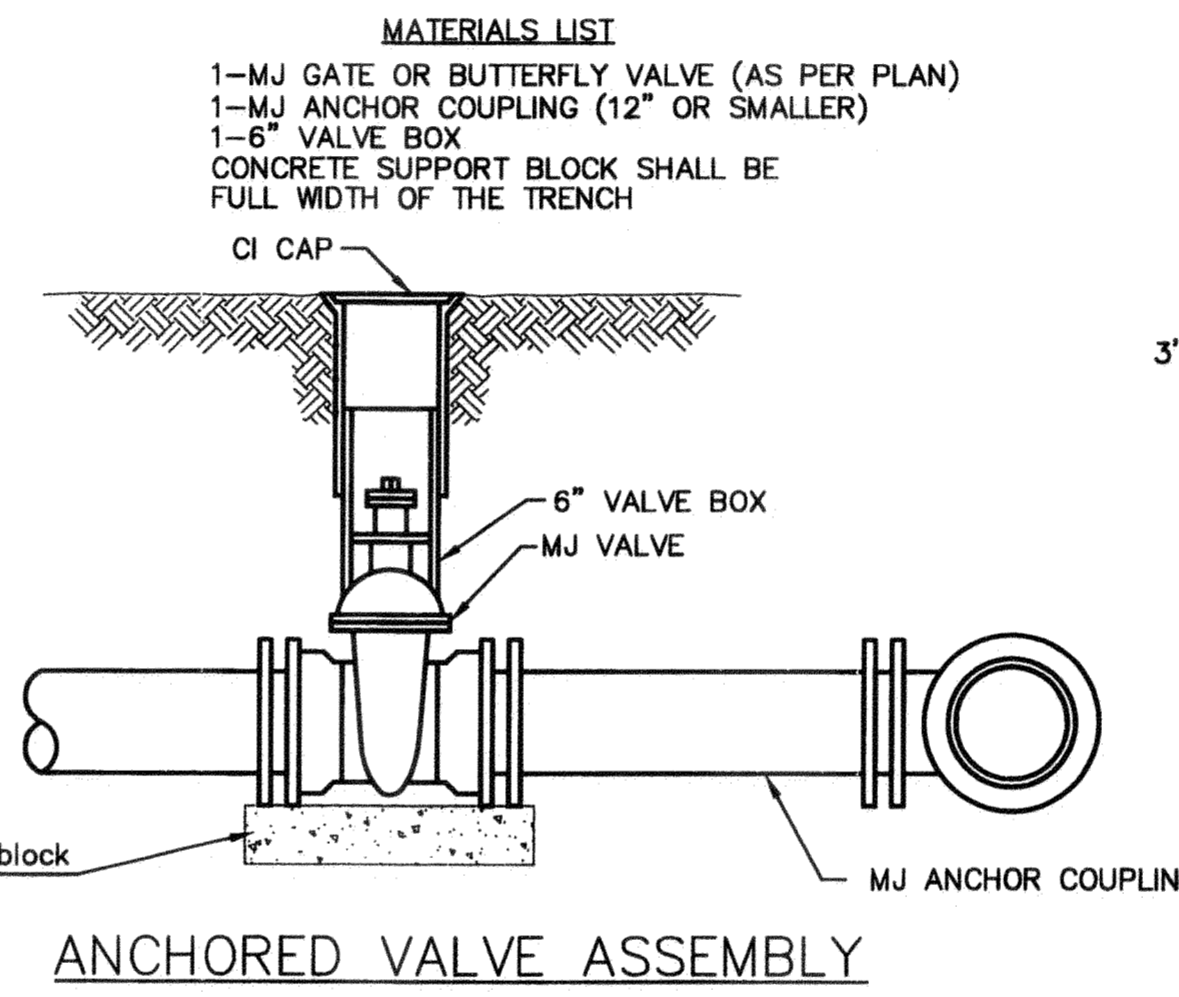
TRACER WIRE
Conductive type pipe locator/tracer wire shall be installed to locate all waterline pipe regardless of pipe material. The wire shall extend the entire length of the proposed pipe. The wire shall be taped to the waterline and pulled with the pipe. Split-bolt connectors shall be used at splice locations. Electrical tape shall cover all splices so no bare wire is exposed. Test stations shall be installed adjacent to all fire hydrants along the waterline and at blowoffs or valves near the ends of the waterlines. Any exceptions to the location of test stations shall be approved by the engineer. At each test station, the tracer wire shall be connected to a 3 lb. Zinc or magnesium anode. Anodes shall also be attached to the tracer wire at both the beginning and the end of the proposed waterline. A typical layout of the tracer wire and test station is provided in the above figure.

WIRE
The tracer wire shall be Blue No. 12 THHN annealed soft copper wire with thermal plastic insulation or Blue No. 12 AWG CCS with 30 mil HDPE insulation. The insulation shall be heat, oil, and gasoline resistant as manufactured by Temple Electric or approved equal. To allow for grade adjustment, a minimum of 12" of excess wire shall be coiled at the bottom of the test station for all wires. The insulation sheathing shall be removed such that 1" bare copper wire at all points of connection. Contractor shall attach wire being installed with proposed water main to any tracer wire installed with adjacent waterline projects.

TEST STATIONS
The test station for fire hydrant applications shall be a 1 inch galvanized "condulet" style test station as manufactured by AGRA Industries with a removable solid cover having two leads extending from the face or approved equal. The test station for valve applications shall be 2 inch flush style test station T2PS3B as manufactured by HANDLEY Industries or approved equal. The "condulet" style test station shall be attached to a 1 inch rigid galvanized conduit with a minimum length of 36" and plastic end bushing. The flush style shall have the word "WATER" stamped or molded into the lid. All test stations shall be manufactured using molded blue tops or sufficiently coated with blue enamel paint. The tracer wire and the anode wire shall be installed to allow 10 inches of wire within the test station. In concrete environments such as sidewalks or in the downtown area the contractor shall use the flush style test station. The location of all test stations shall be approved by the engineer, recorded, and shown in the as-built drawings.

ANODES
The anodes shall be 3 lb. bare zinc or magnesium. The anodes shall be buried at the same elevation as the waterline at each test station. The anodes shall be connected to Black No. 12 THHN annealed soft copper wire which shall be extended to the test station.

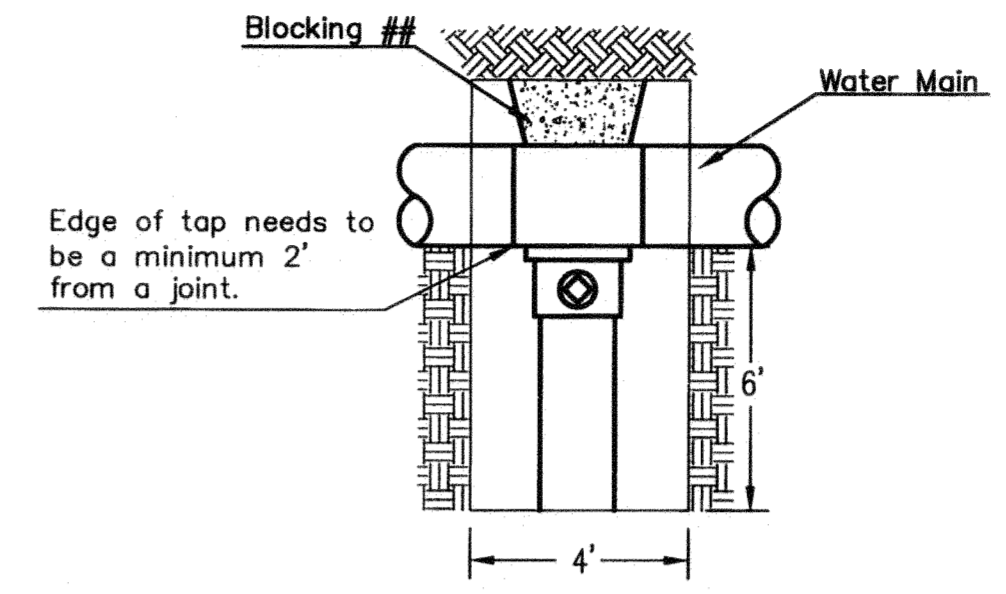
TRACER WIRE DETAIL
COST IS SUBSIDIARY TO PIPE INSTALLATION



ANCHORED VALVE ASSEMBLY

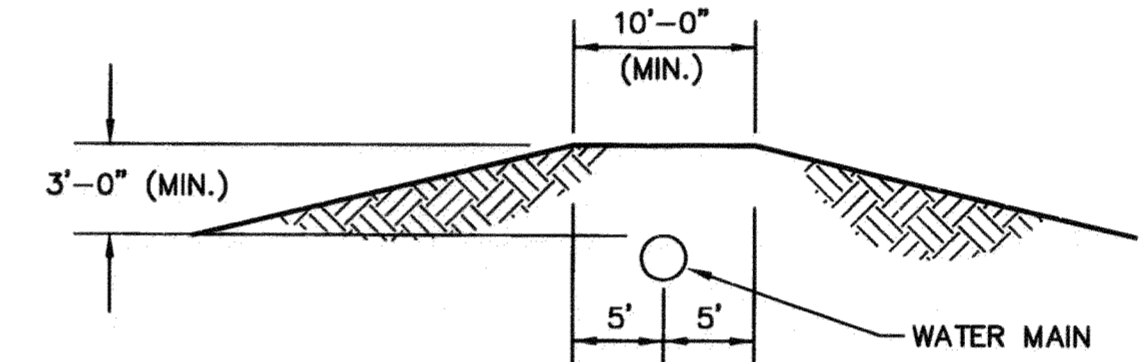
- MATERIALS LIST**
- 1-MJ GATE OR BUTTERFLY VALVE (AS PER PLAN)
 - 1-MJ ANCHOR COUPLING (12" OR SMALLER)
 - 1-6" VALVE BOX
 - CONCRETE SUPPORT BLOCK SHALL BE FULL WIDTH OF THE TRENCH

FIRE HYDRANTS REQUIRED				
STATION	BURY LINE ELEVATION	TOP OF PIPE ELEVATION	FIRE HYDRANT BURY REQUIRED*	VALVE STEM EXT. REQUIRED (ft)*
Line 2- 2+27.18	1302.30	1298.00	5.0'	0.0'



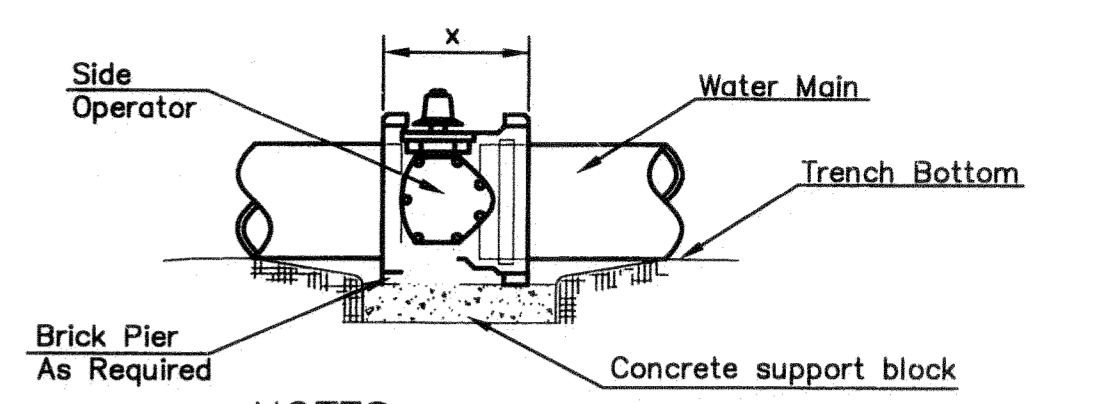
CITY TAP

When the City of Wichita makes tap, blocking is to be done by Contractor



PROTECTIVE FILL DETAIL

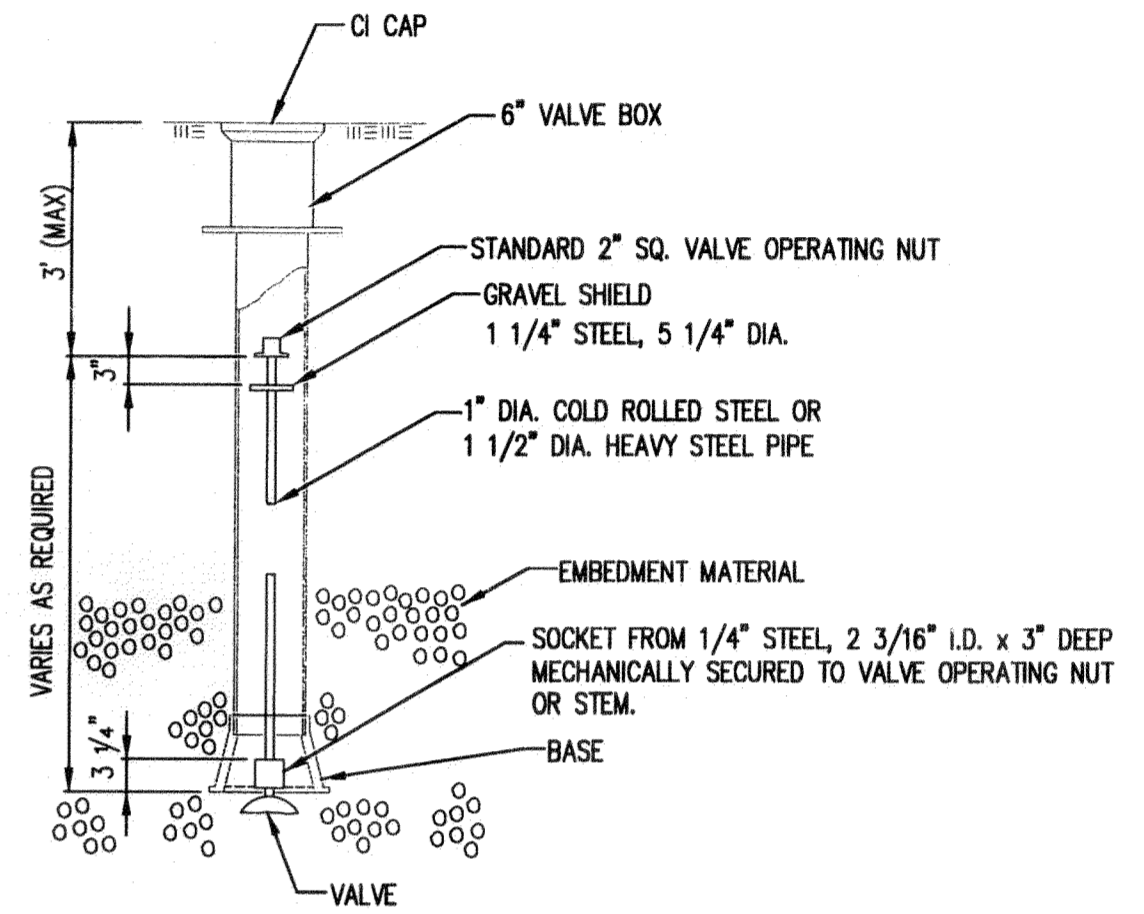
MINIMUM PROTECTIVE FILL SHALL BE PROVIDED IN ALL INSTANCES WHERE COVER OVER THE PROP. WATER LINE IS LESS THAN 5". (COST SUBSIDIARY TO PIPE INSTALLATION)



NOTES

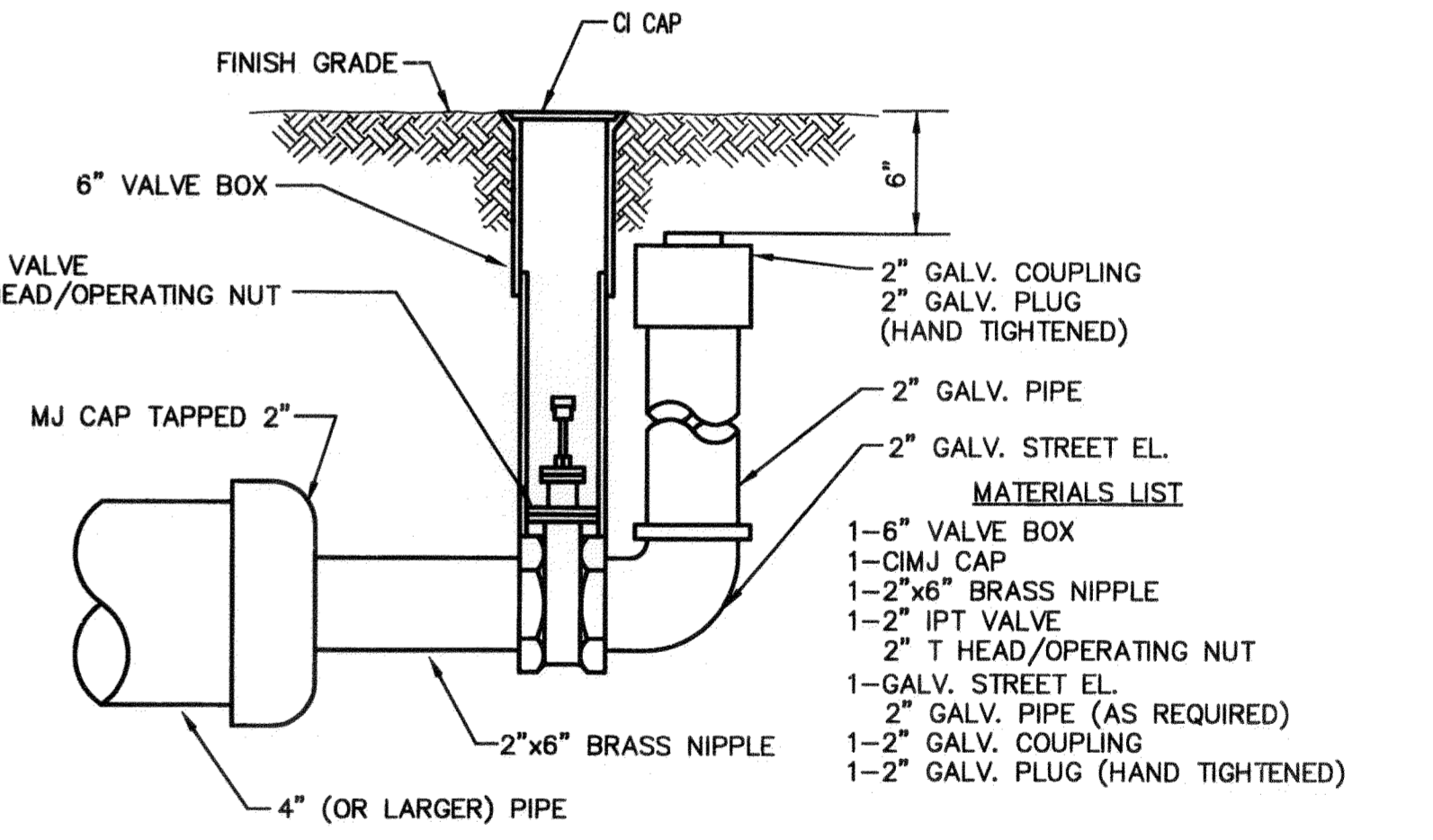
1. This detail covers Butterfly Valve installation, inclusive, regardless of type of pipe or joint used. 24" and larger lines to be detailed on plans.
2. 6" Valve Box and Cover required per City of Wichita Std. Specifications.
3. Conc. Support Block to be full width of trench.

CONCRETE SUPPORT BLOCKING FOR BUTTERFLY VALVE INSTALLATION



VALVE STEM EXTENSION DETAIL

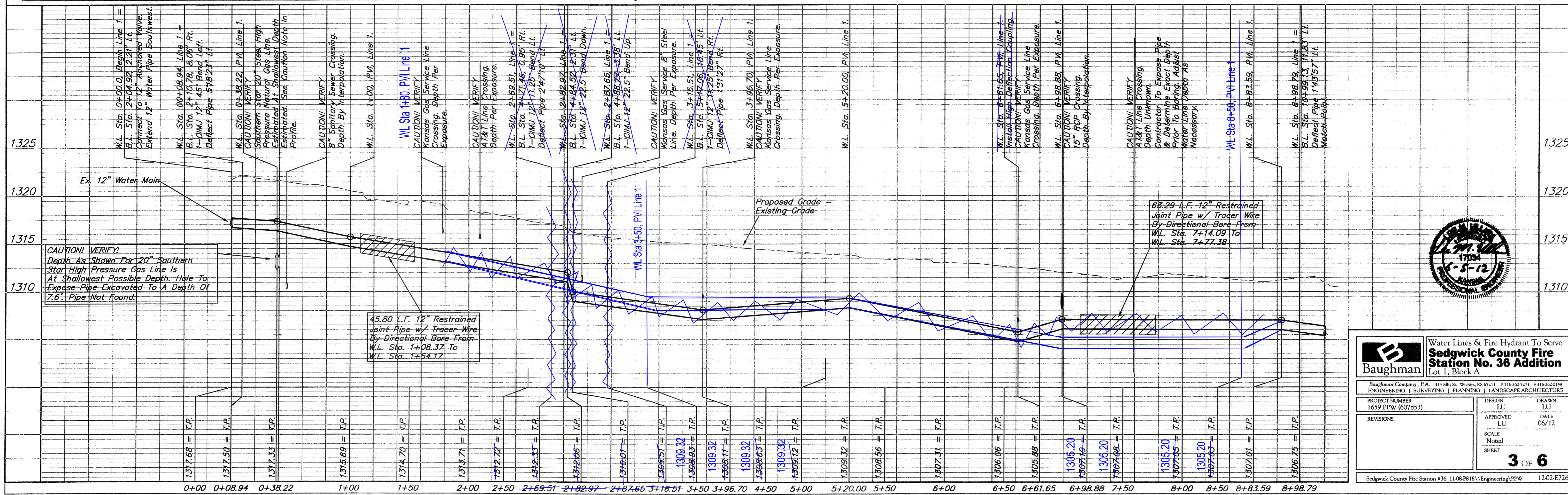
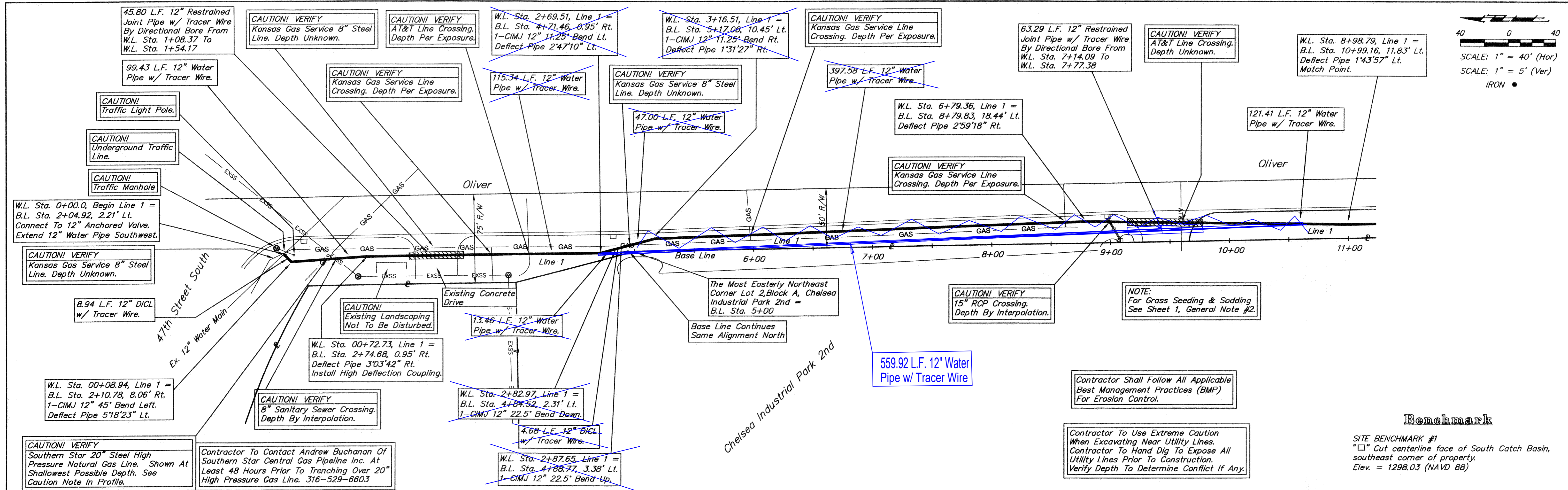
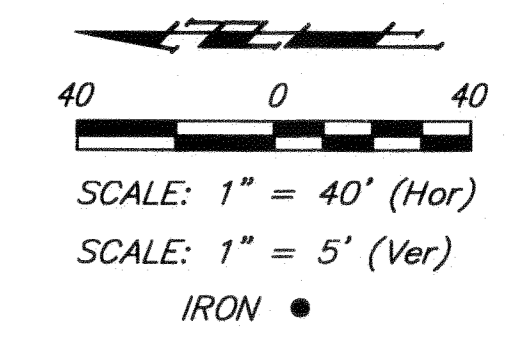
NOTE: ONE VALVE STEM EXTENSION FOR EACH VALVE BURIED GREATER THAN 5'.



2" BLOWOFF ASSEMBLY



STANDARD WATER ASSEMBLY DETAIL		
INTERIM CITY ENGINEER		
Gary Janzen, P.E.		
PROJECT NUMBER	OCA NUMBER	DATE
1659 PPW (607853)	NA	06/12
CITY ENGINEER'S OFFICE		SHEET
CITY HALL - SEVENTH FLOOR 455 NORTH MAIN STREET WICHITA, KANSAS 67202-1620 (316) 268-4501		2 of 6



Benchmark

SITE BENCHMARK #1
 "□" Cut centerline face of South Catch Basin,
 southeast corner of property.
 Elev. = 1298.03 (NAVD 88)

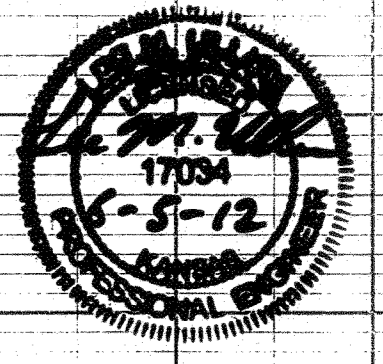
Baughman Water Lines & Fire Hydrant To Serve
Sedgwick County Fire Station No. 36 Addition
 Lot 1, Block A

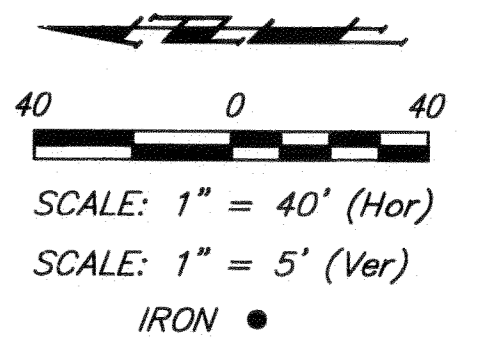
Baughman Company, P.A. 315 Ellis St. Wichita, KS 67211 P 316-262-7271 F 316-262-0149
 ENGINEERING | SURVEYING | PLANNING | LANDSCAPE ARCHITECTURE

PROJECT NUMBER 1659 PPW (607853) DESIGN LU DRAWN LU
 APPROVED LU DATE 06/12
 REVISIONS: SCALE Noted SHEET

Sedgwick County Fire Station #36_11-08-P818\Engineering\PPW 1202-E726

3 OF 6





W.L. Sta. 8+98.79, Line 1 =
B.L. Sta. 10+99.16, 11.83' Lt.
Extend 12" Water Main South.
Match Point.

786.86 L.F. 12" Water
Pipe w/ Tracer Wire.

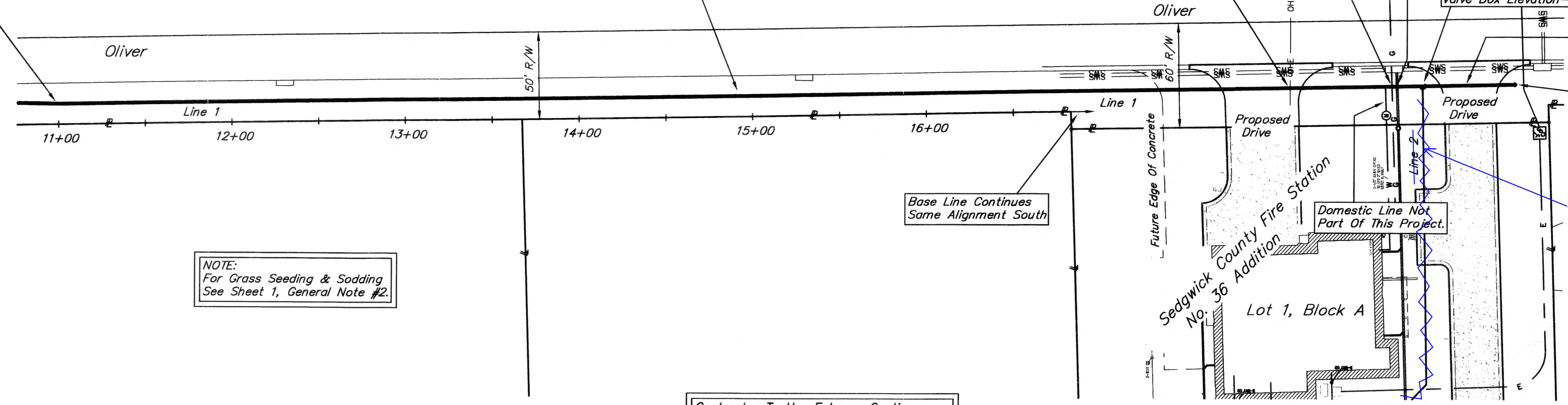
CAUTION!
Proposed Kansas Gas Service
Line Crossing. Proposed Depth
Unknown.

CAUTION!
Proposed 10" PVC Line
Crossing. Proposed Depth By
Interpolation From Site Utility
Plan..

W.L. Sta. 16+85.65, Line 1 =
W.L. Sta. 0+00.00, Line 2 =
B.L. Sta. 18+86.01, 11.91' Lt.
1-CIMJ 12"x12"x8" Tee.
1-8" Anchored Valve (W)
Valve Box Elevation = 1299.00
1-12" Anchored Valve (S)
Valve Box Elevation = 1299.00

Install 1-8" CIMJ Plug (W)

W.L. Sta. 17+39.69, End Line 1 =
B.L. Sta. 19+40.05, 11.92' Lt.
1-Blow Off Valve Assembly.
Valve Box Elevation = 1298.40



NOTE:
For Grass Seeding & Sodding
See Sheet 1, General Note #2

Base Line Continues
Same Alignment South

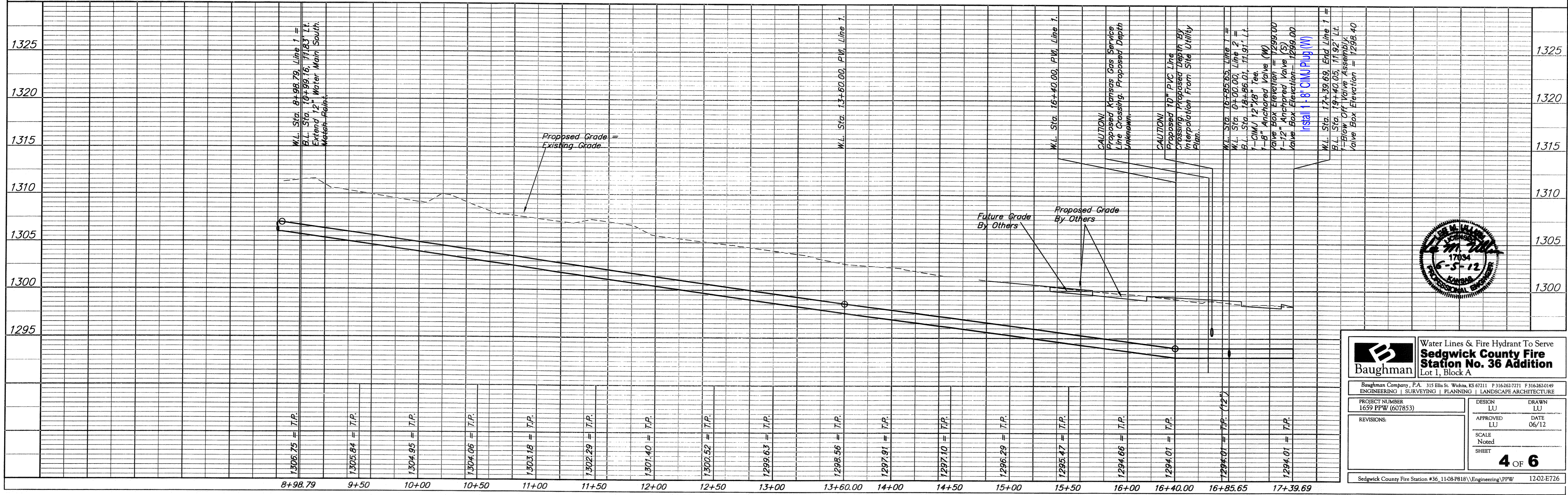
Line 2 By others

Benchmark

SITE BENCHMARK #1
"□" Cut centerline face of South Catch Basin,
southeast corner of property.
Elev. = 1298.03 (NAVD 88)

Contractor Shall Follow All Applicable
Best Management Practices (BMP)
For Erosion Control.

Contractor To Use Extreme Caution
When Excavating Near Utility Lines.
Contractor To Hand Dig To Expose All
Utility Lines Prior To Construction.
Verify Depth To Determine Conflict If Any.

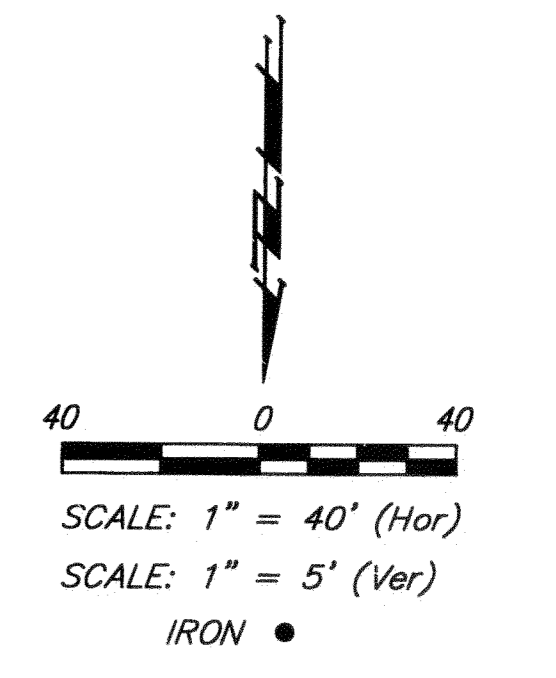
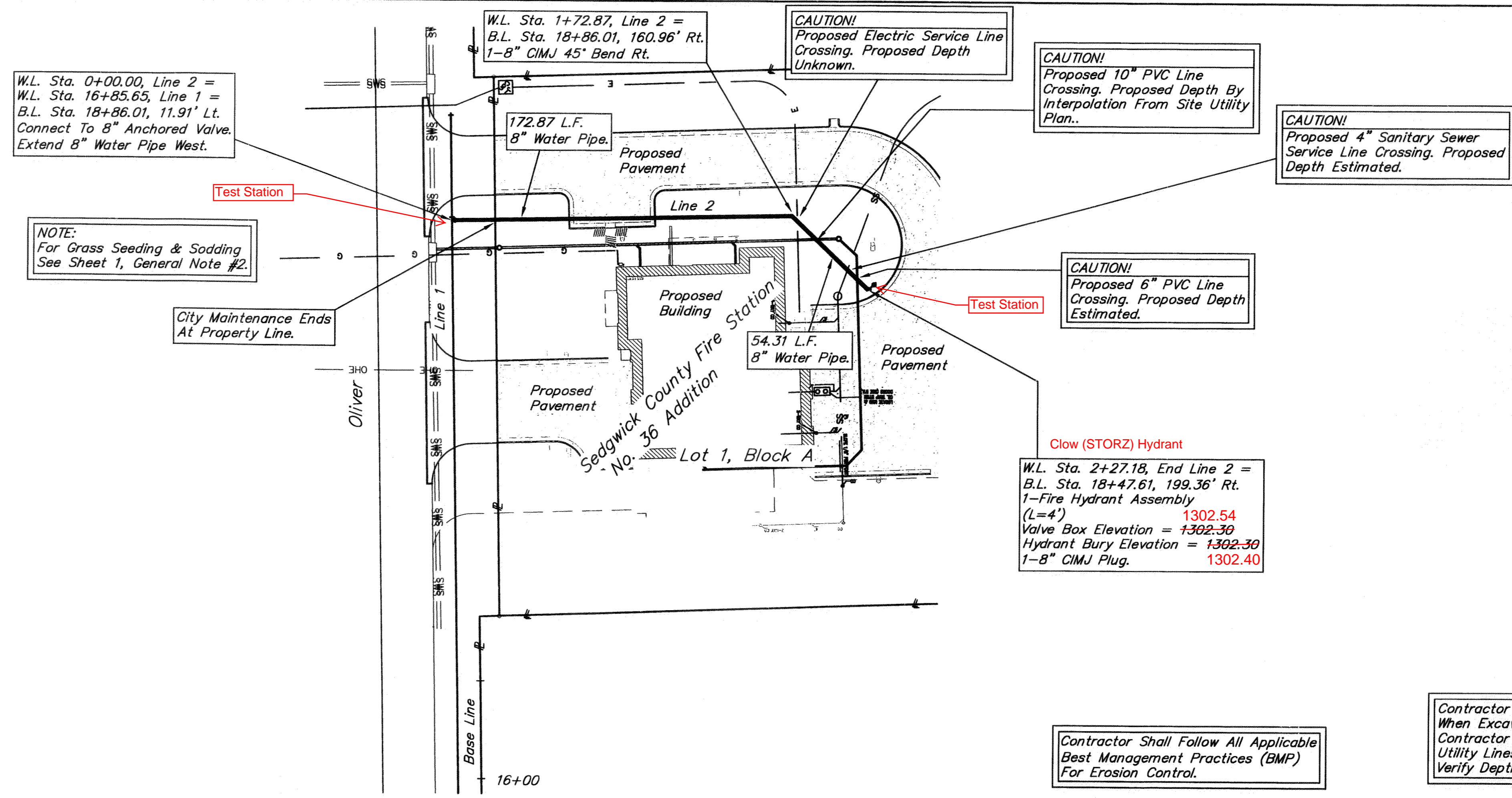


Baughman Water Lines & Fire Hydrant To Serve
Sedgwick County Fire Station No. 36 Addition
Lot 1, Block A

Baughman Company, P.A. 315 Ellis St. Wichita, KS 67211 P 316-263-7271 F 316-263-0149
ENGINEERING | SURVEYING | PLANNING | LANDSCAPE ARCHITECTURE

PROJECT NUMBER 1659 PPW (607853)	DESIGN LU	DRAWN LU
REVISIONS:	APPROVED LU	DATE 06/12
	SCALE Noted	
	SHEET	4 OF 6

Sedgwick County Fire Station #36_11-08-P818\Engineering\PPW 12-02-E726

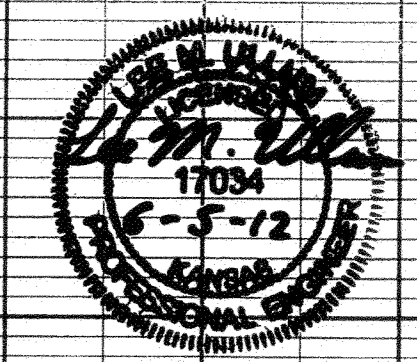
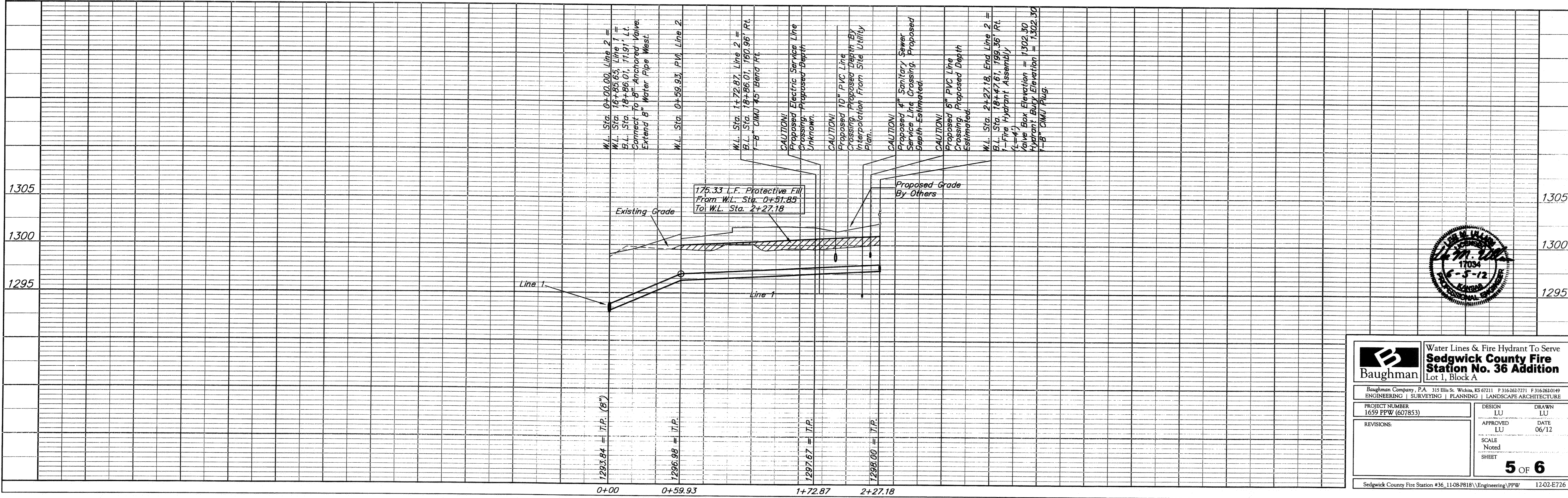


Benchmark

SITE BENCHMARK #1
"□" Cut centerline face of South Catch Basin,
southeast corner of property.
Elev. = 1298.03 (NAVD 88)

Contractor Shall Follow All Applicable
Best Management Practices (BMP)
For Erosion Control.

Contractor To Use Extreme Caution
When Excavating Near Utility Lines.
Contractor To Hand Dig To Expose All
Utility Lines Prior To Construction.
Verify Depth To Determine Conflict If Any.



Baughman Water Lines & Fire Hydrant To Serve
Sedgwick County Fire Station No. 36 Addition
Lot 1, Block A

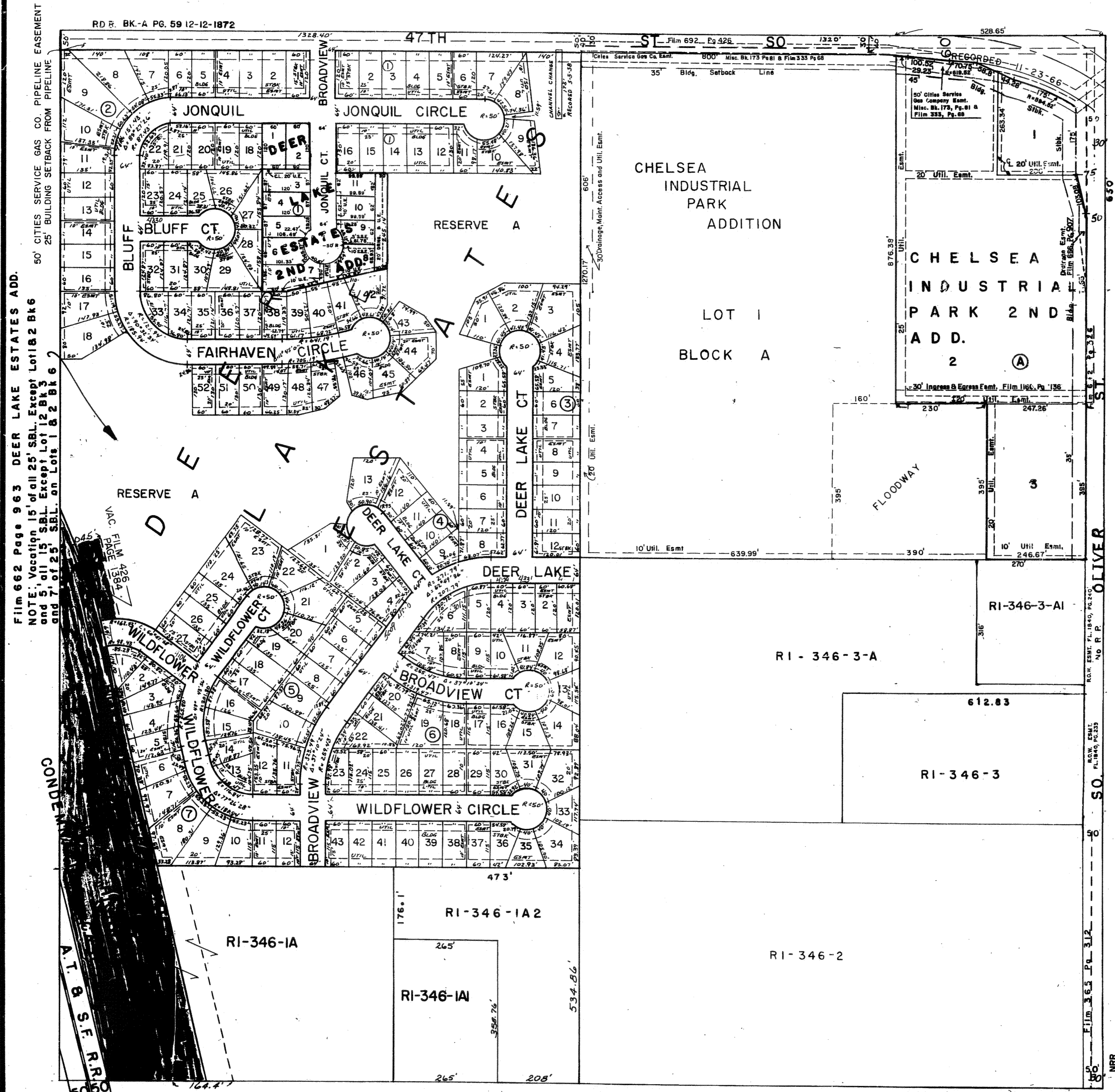
Baughman Company, P.A. 315 Ellis St. Wichita, KS 67211 P 316-262-7271 F 316-262-0149
ENGINEERING | SURVEYING | PLANNING | LANDSCAPE ARCHITECTURE

PROJECT NUMBER 1659 FPW (607853)	DESIGN LU	DRAWN LU
APPROVED LU	DATE 06/12	
REVISIONS:	SCALE Noted	SHEET 5 OF 6

Sedgwick County Fire Station #36_11-08-P818\\Engineering\PPW 12.02-E726

N.E. ¼ SEC. 23 TWP. 28S. R. 1 E

RI
89



Film 662 Page 963 DEER LAKE ESTATES ADD.
 NOTE: Vacations 15 of all 25 SBL. Except Lot 12 Bk 3
 and 5, all 15 SBL. Except Lot 12 Bk 3
 and 7 of 25 SBL. on Lots 1 & 2 Bk 6

R.D. B. BK-A PG. 59 12-12-1872

