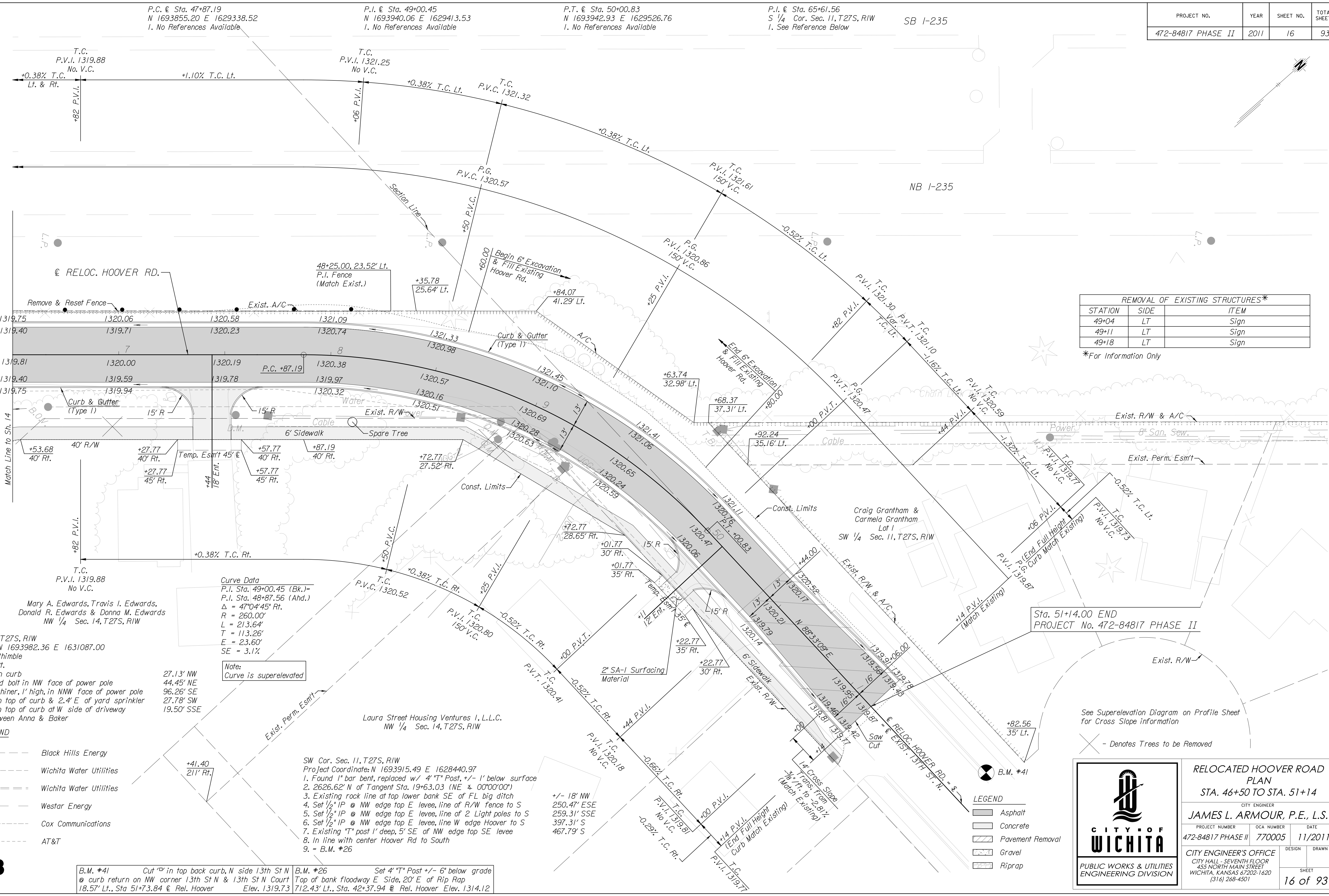


PROJECT NO.	YEAR	SHEET NO.	TOTAL SHEETS
472-84817 PHASE II	2011	16	93



REMOVAL OF EXISTING STRUCTURES*

STATION	SIDE	ITEM
49+04	LT	Sign
49+11	LT	Sign
49+18	LT	Sign

*For Information Only

S 1/4 Cor. Sec. 11, T27S, R1W
 Project Coordinate: N 1693982.36 E 1631087.00
 1. Found 3/4" IP in thimble
 2. 65+61.56, 0.00' Rt.
 3. Existing ** cut on curb
 4. Existing hex head bolt in NW face of power pole
 5. Existing nail & shiner, 1' high, in MNW face of power pole
 6. Existing ** cut on top of curb & 2.4' E of yard sprinkler
 7. Existing ** cut on top of curb at W side of driveway
 8. CL of 13" St between Anna & Baker

Curve Data
 P.I. Sta. 49+00.45 (Bk.)
 P.I. Sta. 48+87.56 (Ahd.)
 $\Delta = 47^{\circ}04'45''$
 $R = 260.00'$
 $L = 213.64'$
 $T = 113.26'$
 $E = 23.60'$
 $SE = 3.1\%$

UTILITY LEGEND

UGG-2	Black Hills Energy
Water	Wichita Water Utilities
San. Sew.	Wichita Water Utilities
Power	Westar Energy
Cable	Cox Communications
UGT	AT&T



B.M. #41 Cut on top back curb, N side 13th St N
 @ curb return on NW corner 13th St N & 13th St N Court
 18.57' Lt., Sta. 51+73.84 @ Rel. Hoover Elev. 1319.73

B.M. #26 Set 4" *T* Post +/- 6" below grade
 Top of bank floodway E Side, 20' E of Rip Rap
 712.43' Lt., Sta. 42+37.94 @ Rel. Hoover Elev. 1314.12



RELOCATED HOOVER ROAD
 PLAN
 STA. 46+50 TO STA. 51+14

CITY ENGINEER
JAMES L. ARMOUR, P.E., L.S.

PROJECT NUMBER	OCA NUMBER	DATE
472-84817 PHASE II	770005	11/2011

CITY ENGINEER'S OFFICE
 CITY HALL - SEVENTH FLOOR
 455 NORTH MAIN STREET
 WICHITA, KANSAS 67202-1620
 (316) 268-4501

DESIGN DRAWN
 SHEET
16 of 93

Plotted on: Monday October 24, 2011 09:30 AM
 mbechtel Plot Queue: \\vopw00\vr\TBWLP
 Plot Scale: 20.000000000000 Pen Table: \\vopw00\jobs\4809\hoover\CD\Plan\HVR-plan.dgn
 Design Filename: \\vopw00\jobs\4809\hoover\CD\Plan\HVR-plan.dgn