

WL No. 2, Bl. Sta. 19+06.48, 32' Lt. =
 WL No. 2, Sta. 10+00
 Match Line, See Sheet 9 for Continuation.

WL No. 2, Bl. Sta. 19+38.54, 32' Lt. =
 WL No. 2, Sta. 10+32.06
 Install 1" Long Service to 1720 Stillwell

WL No. 2, Bl. Sta. 19+81.01, 32' Lt. =
 WL No. 2, Sta. 10+74.53
 1 - 8" DI CL MJ 45° Bend
 Horiz. Defl. = 45'00"00"

WL No. 2, Bl. Sta. 19+87.01, 26' Lt. =
 WL No. 2, Sta. 10+83.01
 1 - 8" DI CL MJ 45° Bend
 Horiz. Defl. = 45'00"00"

WL No. 2, Bl. Sta. 23+48.42, 26' Lt. =
 WL No. 2, Sta. 14+44.43
 1 - 8" x 8" DI CL MJ Tee (Rotated)
 5' - 8" DI CL Pipe (E)
 1 - 8" 90° DI CL MJ Bend
 5' - 8" DI CL Pipe (S)
 1 - 8" Valve Assembly (N)
 Top of Valve Box = Match Existing

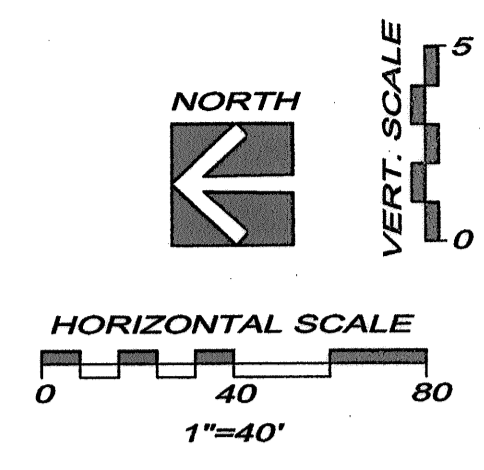
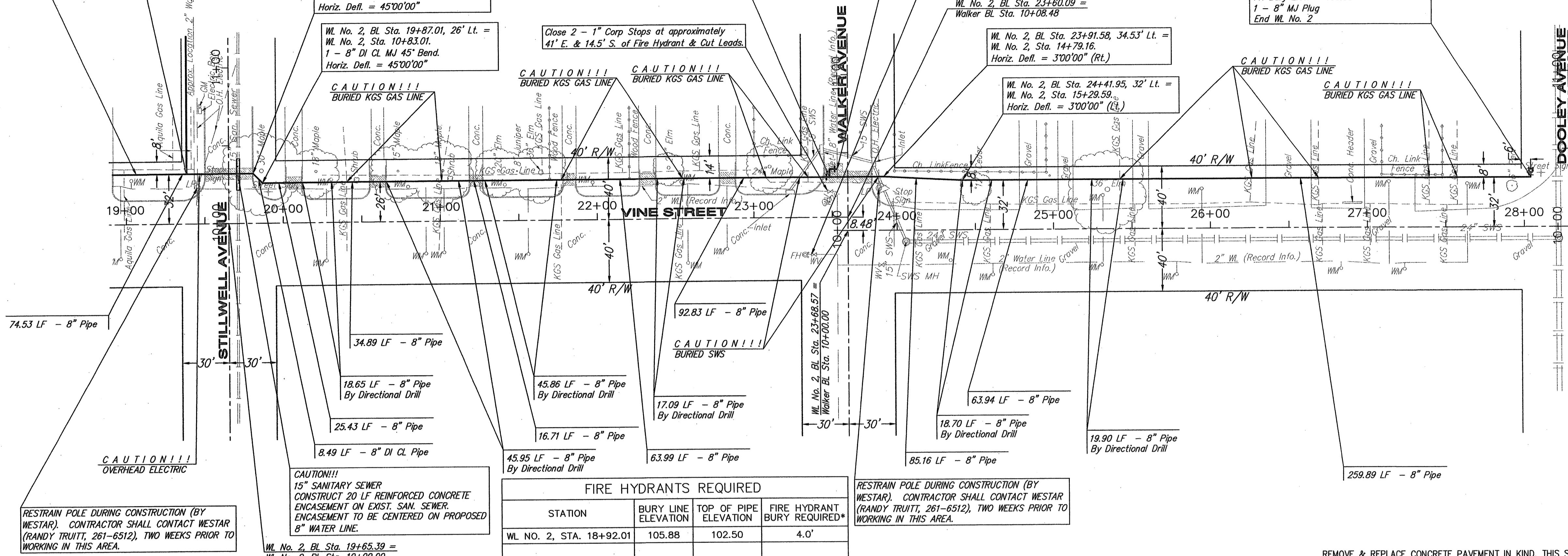
WL No. 2, Bl. Sta. 23+53.42, 31' Lt. =
 Existing Water Line
 1 - 8" x 8" Tapping Sleeve
 1 - 8" Tapping Valve
 1 - 6" Valve Box
 (To be furnished and set by
 City of Wichita Water Department)
 Top of Valve Box Elev. = Match Existing

Close 2 - 1" Corp Stops at approximately
 14' S. & 7' W. of Fire Hydrant & Cut Leads.

WL No. 2, Bl. Sta. 23+60.09 =
 Walker Bl. Sta. 10+08.48

WL No. 2, Bl. Sta. 23+91.58, 34.53' Lt. =
 WL No. 2, Sta. 14+79.16
 Horiz. Defl. = 3'00"00" (Rt.)

WL No. 2, Bl. Sta. 28+04.37, 32' Lt. =
 WL No. 2, Sta. 18+92.01
 1 - Fire Hydrant Assembly
 L = 4'
 Top of Valve Box Elev. = Match Existing
 FH Bury Elev. = 105.88
 1 - 8" MJ Plug
 End WL No. 2



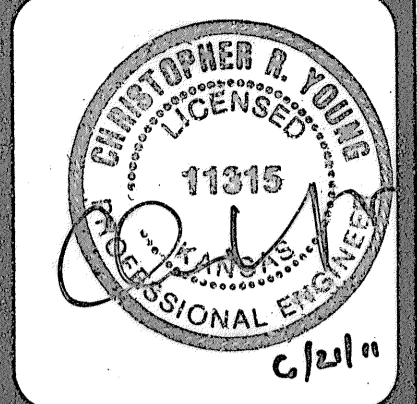
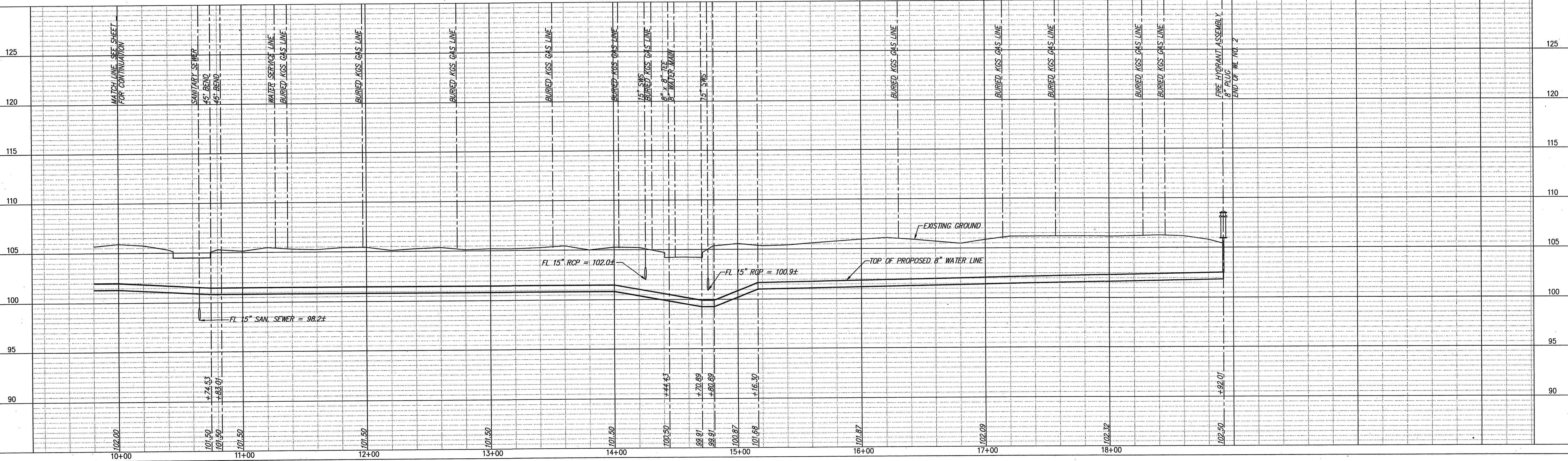
- LEGEND
- PP UTILITY POLE
 - LP LIGHT POLE
 - DM DEAD MAN
 - WM WATER METER
 - WV WATER VALVE
 - GV GAS VALVE
 - SS MH SANITARY SEWER MANHOLE
 - SWS MH STORM SEWER MANHOLE

FIRE HYDRANTS REQUIRED

STATION	BURY LINE ELEVATION	TOP OF PIPE ELEVATION	FIRE HYDRANT BURY REQUIRED*
WL No. 2, STA. 18+92.01	105.88	102.50	4.0'

RESTRAIN POLE DURING CONSTRUCTION (BY WESTAR). CONTRACTOR SHALL CONTACT WESTAR (RANDY TRUITT, 261-6512), TWO WEEKS PRIOR TO WORKING IN THIS AREA.

- NOTES:
- UNLESS OTHERWISE INDICATED, DIMENSIONS ARE MEASURED TO CENTERLINE OF FITTINGS IN PLAN VIEW AND TOP OF PIPE IN PROFILE VIEW.
 - WL NO. 2 BASELINE = CENTERLINE OF VINE STREET RIGHT OF WAY.
 - REFER TO SHEET 2, NOTE NO. 8, FOR DIRECTIONAL DRILLING REQUIREMENTS.



YOUNG & ASSOCIATES, P.A.
 Civil and Environmental Engineers
 100 S. George, Derby, KS 67037
 tele: (316)798-2552 fax: (316)798-4408 email: young@yandassociates.com

**WATER LINE NO. 2
 PLAN AND PROFILE**
McCormicks Water Main Replacement
 City of Wichita, Sedgwick County, Kansas

REVISIONS

NO.	DATE	COMMENTS	BY	APP.

PROJECT NO.: 06-228
 DATE: 2-15-07
 DRAWN: DAS
 DESIGNED: DAS
 CHECKED: GRV
 APPROVED: