

BENCHMARKS:
 BM #1:
 RR Spike in CATV Pole, 85' east and 77' south of SE corner of Woods North 3rd Addition.
 Elev. = 1383.00 NAVD88
 BM #2:
 " cut at centerline of inlet adjacent to Lot 29, Block A, Woods North 2nd Addition.
 Elev. = 1387.12 NAVD88
 BM #3:
 Cross cut on north end of west headwall 137.5' south & 12' west of the intersection of 29th St N & 127th St E.
 ELEV. = 1382.45 NAVD88

2731 N. Woodridge Ct. 25
 2735 N. Woodridge Ct. 26
 Graveled landscape area
 90°27'52"
 111°43'15"
 Sprinkler
 ATT Reg. Pole
 Ebor
 U/G AT&T
 U/G SWS

Sta 0+00, Begin Line 1
 Connect to existing stub in manhole and extend pipe north.

CAUTION!
 Underground irrigation lines, sprinklers, and landscaping are present in Lot 25 & 26. Contractor shall be responsible for preservation of these systems and repair any damage caused by construction at no additional cost to the project. Cost incidental to "Site Restoration."

Contractor to replace all disturbed areas in Lot 25 & 26 with sod in like kind to existing. Cost incidental to "Site Restoration."

CAUTION!
 Existing Underground Utilities Near

CAUTION!
 Existing U/G AT&T Crossing

CAUTION!
 Ex. U/G AT&T Crossing

Proposed 18" SWS Crossing

SEWER SERVICE TABLE

NUMBER	TYPE	LOCATION			FOR INFORMATION ONLY		
		LOT NO.	BLOCK NO.	LINE NO.	STATION \ DIRECTION	APPROXIMATE LENGTH 4" PIPE	VERTICAL
1	8" X 4" Tee	3	A	1	0+20/Rt.	10.0'	13.0'
2	8" X 4" Tee	16	A	1	0+46/Lt.	10.0'	7.0'
3	8" X 4" Tee	15	A	1	1+67/Lt.	10.5'	7.0'
4	8" X 4" Tee	4	A	1	2+03/Rt.	10.5'	13.0'
5	4" Stub w/Riser	14	A	1	2+88.6/Lt.	8.0'	7.0'
6	8" X 4" Tee	12	A	1	3+12/Lt.	8.0'	7.0'
7	8" X 4" Tee	5	A	1	4+35/Rt.	6.5'	13.0'
8	8" X 4" Tee	13	A	1A	0+43/Lt.	10.5'	12.0'

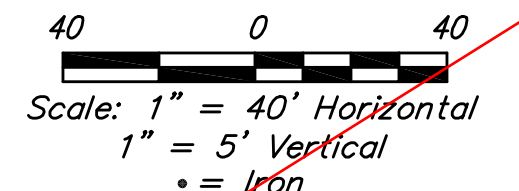
NOTE: Vertical Riser Pipe shall be extended to 2' minimum above ground water elevation and 4' maximum below proposed ground elevation.

Sta 2+88.6, Line 1 = Sta 0+00, Line 1A
 Construct MH, Type P, Standard (4').
 1 - Pipe Stub, 4" (W)
 Rim Elev. = 1389.60

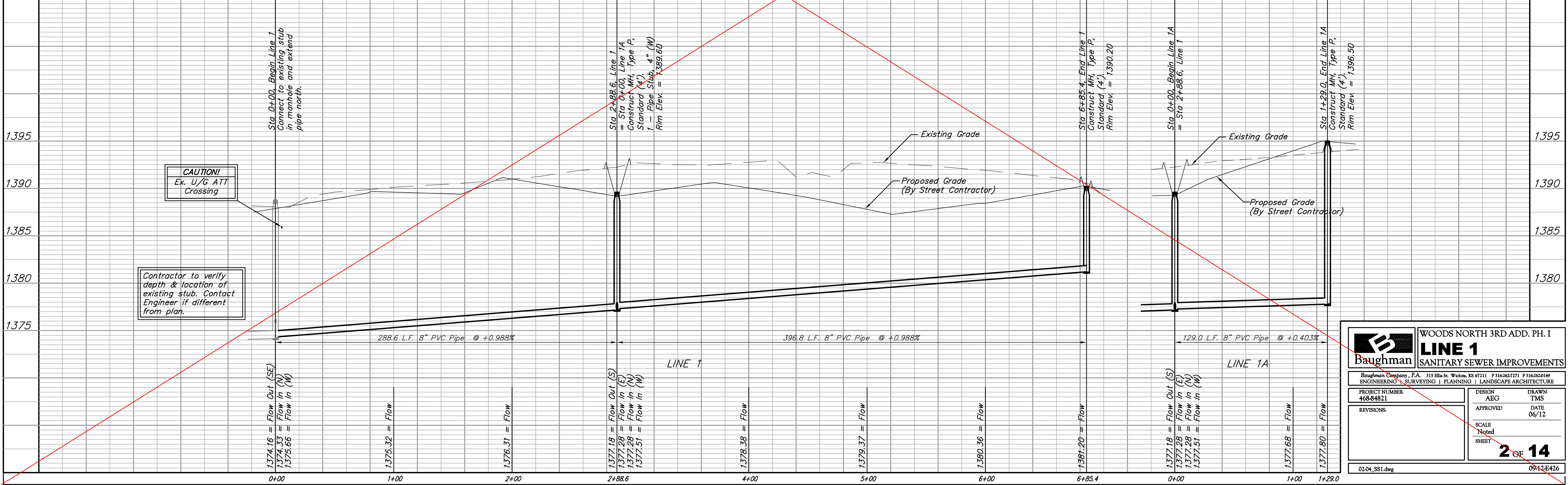
Sta 1+29.0, End Line 1A
 Construct MH, Type P, Standard (4').
 Rim Elev. = 1396.50

Proposed 15" SWS Crossing

Sta 6+85.4, End Line 1
 Construct MH, Type P, Standard (4').
 Rim Elev. = 1390.20



SEE REVISED PLAN SHEET



Baughman WOODS NORTH 3RD ADD. PH. I
LINE 1
 SANITARY SEWER IMPROVEMENTS

Baughman Company, P.A. 315 Ella St. Wichita, KS 67211 P 316-262-7271 F 316-262-0149
 ENGINEERING SURVEYING PLANNING LANDSCAPE ARCHITECTURE

PROJECT NUMBER: 468-84821
 DESIGN: AEG
 APPROVED: TMS
 DATE: 06/12

REVISIONS:

SCALE: Noted
 SHEET: 2 OF 14

02-04_SS1.dwg 09-12-E426