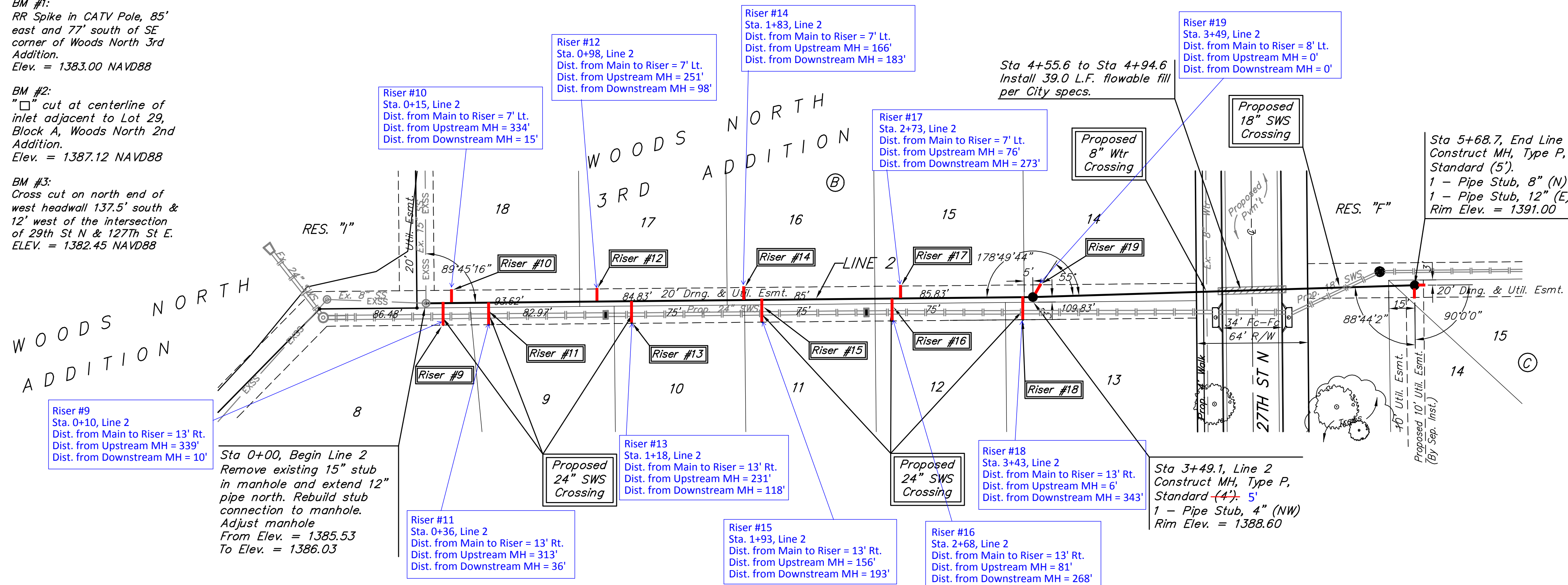
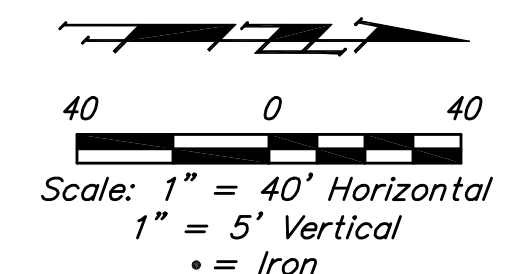


BENCHMARKS:

BM #1:
RR Spike in CATV Pole, 85' east and 77' south of SE corner of Woods North 3rd Addition.
Elev. = 1383.00 NAVD88

BM #2:
"□" cut at centerline of inlet adjacent to Lot 29, Block A, Woods North 2nd Addition.
Elev. = 1387.12 NAVD88

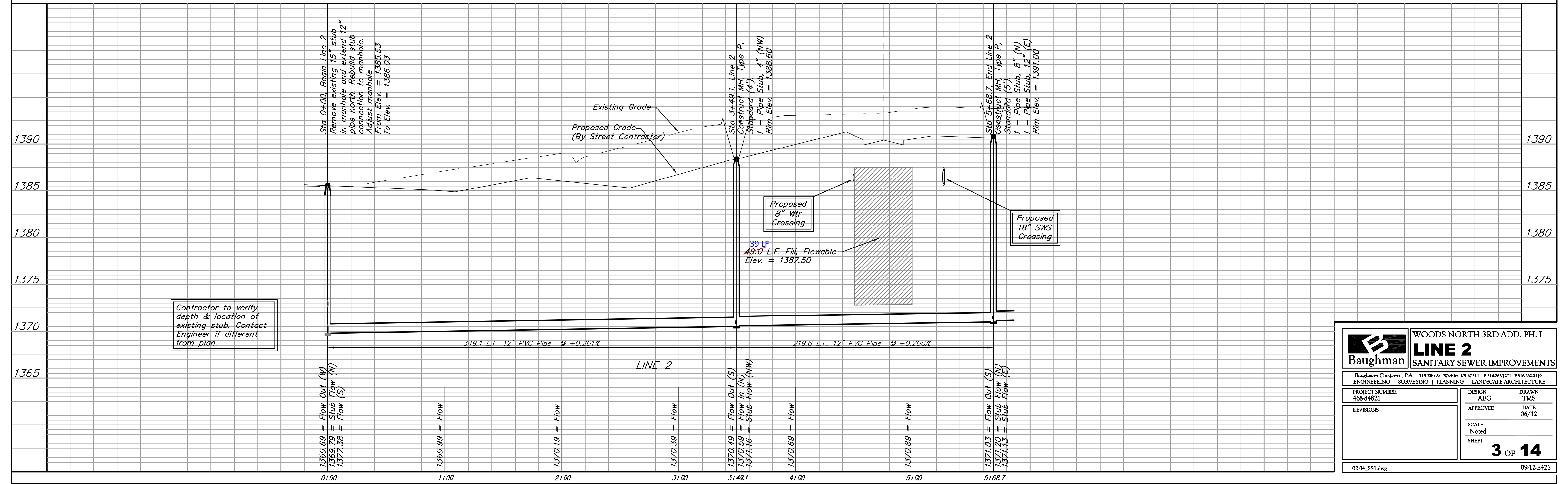
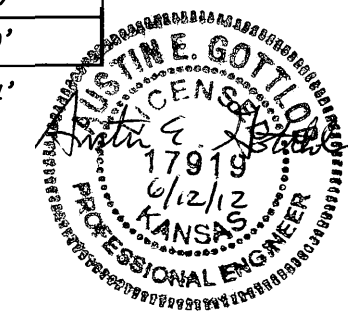
BM #3:
Cross cut on north end of west headwall 137.5' south & 12' west of the intersection of 29th St N & 127th St E.
ELEV. = 1382.45 NAVD88



SEWER SERVICE TABLE

NUMBER	TYPE	LOCATION			FOR INFORMATION ONLY	
		LOT NO.	BLOCK NO.	LINE NO.	STATION DIRECTION	APPROXIMATE LENGTH 4" PIPE
					VERTICAL	HORIZONTAL
9	8" X 4" Tee	8	B	2	0+10/Rt.	12.0' 13.0'
10	8" X 4" Tee	18	B	2	0+15/Lt.	12.0' 7.0'
11	8" X 4" Tee	9	B	2	0+36/Rt.	11.5' 13.0'
12	8" X 4" Tee	17	B	2	0+98/Lt.	11.5' 7.0'
13	8" X 4" Tee	10	B	2	1+18/Rt.	11.5' 13.0'
14	8" X 4" Tee	16	B	2	1+83/Lt.	12.0' 7.0'
15	8" X 4" Tee	11	B	2	1+93/Rt.	12.0' 13.0'
16	8" X 4" Tee	12	B	2	2+68/Rt.	12.0' 13.0'
17	8" X 4" Tee	15	B	2	2+73/Lt.	12.0' 7.0'
18	8" X 4" Tee	13	B	2	3+43/Rt.	14.5' 13.0'
19	4" Stub w/Riser	14	B	2	3+49.1/Lt.	14.5' 8.0'

NOTE: Vertical Riser Pipe shall be extended to 2' minimum above ground water elevation and 4' maximum below proposed ground elevation.



Baughman ENGINEERING | SURVEYING | PLANNING | LANDSCAPE ARCHITECTURE

WOODS NORTH 3RD ADD. PH. I

LINE 2
SANITARY SEWER IMPROVEMENTS

PROJECT NUMBER: 468-84821
DESIGN: AEG
APPROVED: [Signature]
DATE: 06/12

REVISIONS:

SCALE: Noted
SHEET: **3 OF 14**

02-04_SS1.dwg 09-12-E426