

GENERAL NOTES:

- USGS Datum.
- Unless shown or stated otherwise on these drawings, materials and construction shall be in accordance with City of Wichita Standard Specifications.
- Contractor will be required to provide a minimum advance notice of seventy-two (72) hours to utility companies prior to starting any excavation as follows:
 Kansas One-Call 1-800-344-7233
 The Contractor must notify the following in case of an emergency:
 AT&T (Telephone) 800-870-8390
 Cox Communications (Cable) 262-0661
 Kansas Gas Service (Gas) 832-3101
 City of Wichita Water & Sewer 262-6000
 Westar (Electric) 261-6512
 Black Hills Energy (Gas) 800-303-0357
- The Contractor shall be responsible for preserving property irons. The Contractor will be required to re-establish any property irons which are damaged or destroyed by his construction operations. Such irons shall be re-established by a licensed land surveyor in accordance with state law.
- Existing utilities and their locations, as shown on the plans, represent the best information obtainable for design. Location information has been obtained from the various companies and is either from company utility drawings or company provided field locations. The plan locations shown are not guaranteed. Additional existing utilities may also be encountered. Contractor to field verify location and depth of all utilities prior to construction and report findings to project engineer.
- Rubble from the removal of miscellaneous structures shall be disposed of on sites to be provided by the contractor. These sites shall be approved by the engineer as to suitability, appearance, and site location. Locations that, in the opinion of the engineer, will leave an unsightly appearance will not be approved. All disposal sites must be approved by the Kansas Department of Health and Environment. Material either stockpiled or disposed of in a flood plain would require a Kansas State Board of Agriculture Permit. Any material dumped in Waters of the United States or wetlands is subject to U.S. Corps of Engineers permitting regulations. Any material buried or stockpiled beyond approved construction limits would require additional archeological investigations unless buried in a previously approved borrow location.
- Excess excavation shall be placed as compacted fill on the Mattress Hub Property as directed by the Engineer or Owner.
- Contractor shall provide temporary sediment control at all inlets. Such control shall be maintained until and upon germination of seeding. Acceptable means of control shall be approved by the engineer. Cost shall be considered subsidiary to site clearing and restoration. (Refer to erosion control sheet for measures).
- Equipment and construction materials shall remain out of and away from tree driplines so as not to compact the root zone or damage the tree.
- Any tree that must have branches removed shall be trimmed with a sharp instrument/tool that is intended for such operations. Knocking branches off with a backhoe or other similar machine is not acceptable. Refer to the detail for tree trimming procedure.
- Contractor shall not start work on the project until the project inspector is assigned to the project and is present on the site. Any work done without inspection will be required to be uncovered for inspection.
- The contractor will be required to restore all ditches, swales, road shoulders, entrances and bank lines to their original slopes and grades except as shown otherwise.
- Construction staking and inspection will be provided by the Owner.
- The Contractor will be responsible for testing.

LEGAL DESCRIPTION:

Part of Lot 4, Block 1, Pearson Farms 3rd Addition, to Wichita, Sedgwick County, Kansas.

BENCHMARKS:

1. cut on caisson for light standard. Elev.=1354.52
2. cut on concrete pad under transformer. Elev.=1353.42

LATERAL 538, SOUTHWEST INTERCEPTOR SEWER

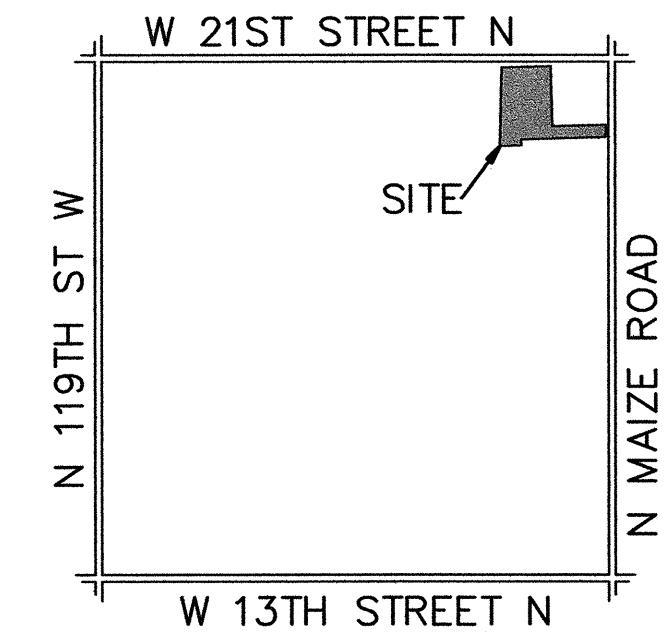
TO SERVE

PEARSON FARMS 3RD ADD.

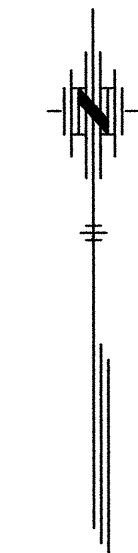
JAMES ARMOUR, P.E. - CITY ENGINEER

C.O.W. PROJ. NO. 468-84813(744330)

CK Contracting - Contractor
 J. Terhune - City of Wichita, Field Proj. Engr.
 S. Cody - City of Wichita, Inspector
 Stub
 As-built
 Released Date: 9/6/2012
 pdf: APROSas 9/14/2012



LOCATION MAP
No Scale

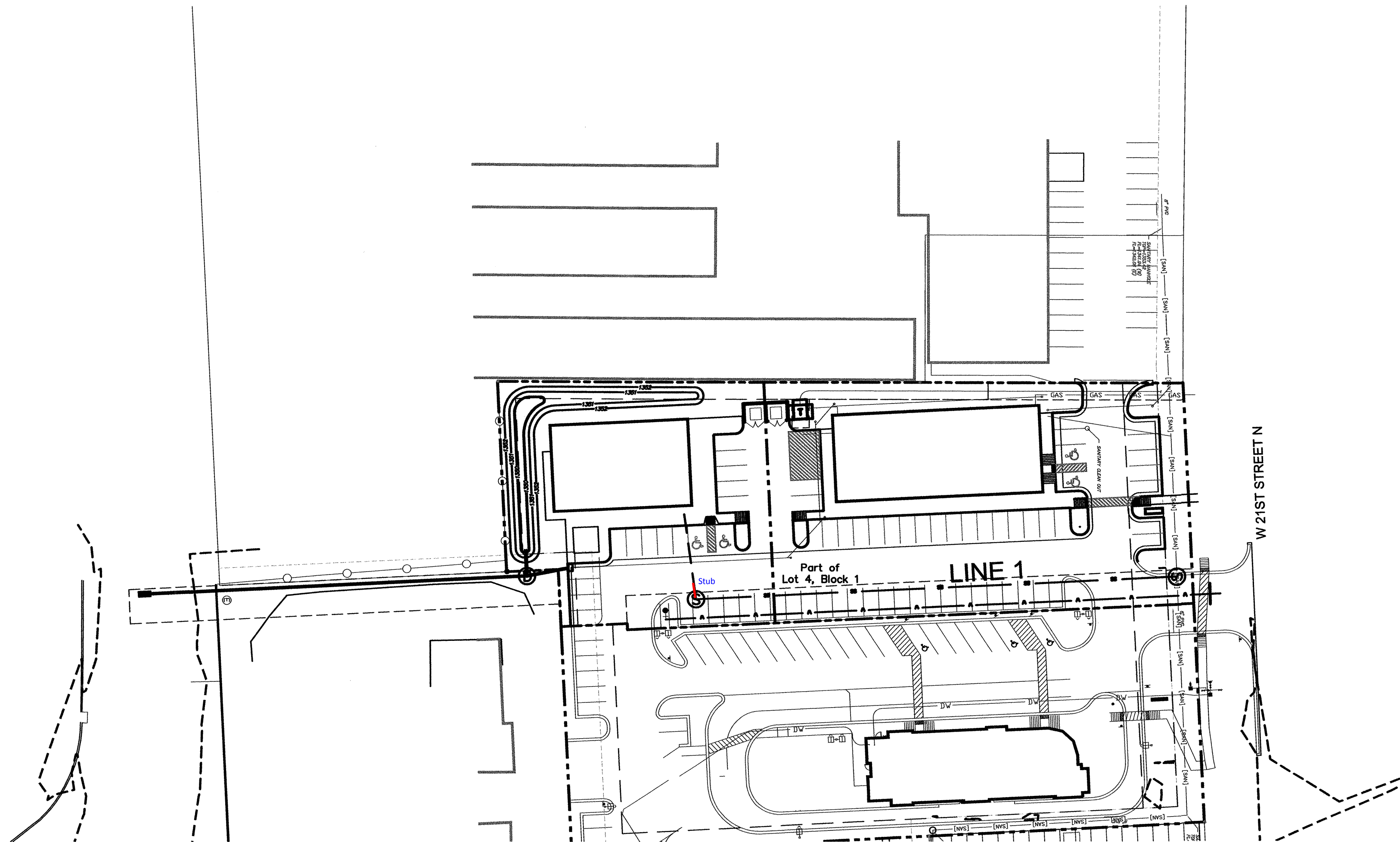


SCALE



SHEET INDEX

TITLE SHEET	SHEET NO. 1
SANITARY SEWER PLAN AND PROFILE	SHEET NO. 2
SANITARY SEWER DETAILS	SHEET NO. 3-4
EROSION CONTROL	SHEET NO. 5
BUBBLE MAP	SHEET NO. 6
BMP DETAILS	SHEET NO. 7-12
FINAL PLAT	SHEET NO. 13



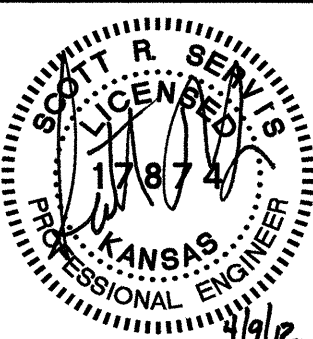
APRIL 2012
PLANS PREPARED BY



POE & ASSOCIATES, INC.
 CONSULTING ENGINEERS
 5940 E. Central, Suite 200 ■ Wichita, KS 67208-4242
 Phone 316/685-4114 ■ FAX 316/685-4444

PEARSON FARMS 3RD ADDITION
 LATERAL 538, SW INTERCEPTOR SEWER
 TITLE SHEET
 CITY OF WICHITA, KANSAS
 JAMES L. ARMOUR, P.E. - CITY ENGINEER
 C.O.W. PROJ. NO. 468-84813 OCA 744330

POE & ASSOCIATES, INC.
 CONSULTING ENGINEERS
 5940 E. Central, Suite 200 ■ Wichita, KS
 67208-4242
 Phone 316/685-4114 ■ FAX 316/685-4444



FINAL
 Engineer: S. SERVIS
 Designer: S. SERVIS
 Drawing: P:\101994\101994grading.dwg
 Date: 4/16/2012