

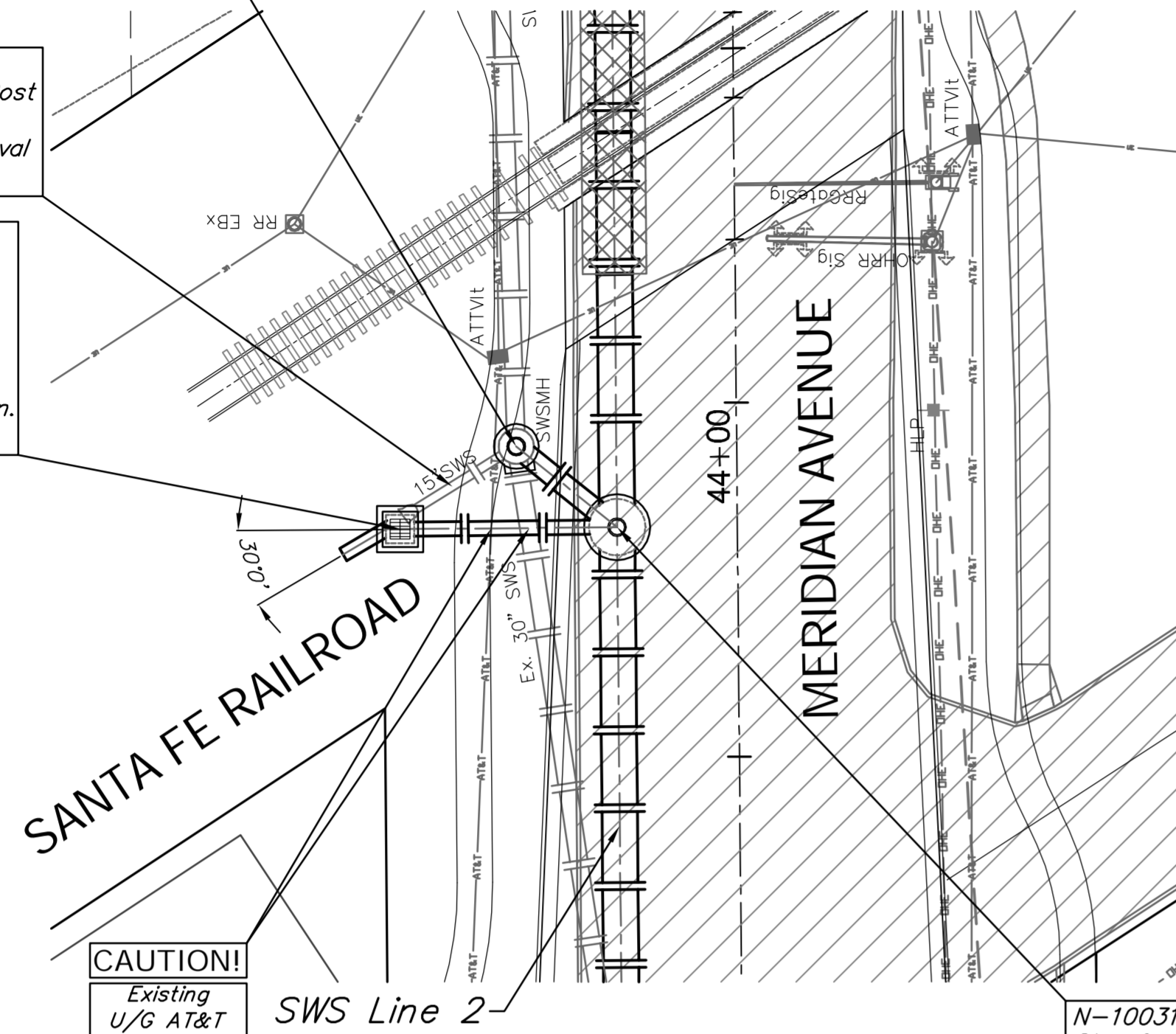
BENCHMARK:
 BM #2 - Chiseled "□" on the West Side of the Wheel Chair Ramp at the southeast corner of Meridian & Orient Elev. = 1293.19 (NAVD 88)

N-10043.18, E-17161.73
 Sta. 0+00.00, Begin SWS Line 2b
 Remove Ex. Manhole.
 Construct MH, Type P Standard (5')
 Connect Ex. 30" RCP (N), Grout, and Seal Tight.
 Top Elev. = 1295.60

Remove Approx. 17 L.F. Ex. 18" Pipe and Drop Inlet. Cost to be SUBSIDIARY to the Lump Sum Bid Item "Removal of Existing Structures".

N-10031.50, E-17145.34
 Sta. 0+00.00, Begin SWS Line 2a
 Construct Inlet, Drop (Single) w/ 9" Apron.
 Install 8.50 L.F. 24" RCP Stub (SW) and Plug. Cost of Plug to be SUBSIDIARY to Pipe Installation.
 Top Elev. = 1292.30

CAUTION!
 Existing U/G AT&T 30" RCP Crossings



SWS LINE 2a & 2b

N-10031.78, E-17175.96
 Sta. 0+30.63, End SWS Line 2a = Sta. 0+18.23, End SWS Line 2b = Sta. 2+18.30, SWS Line 2
 Connect to Prop. Manhole, Grout, & Seal Tight.

BENCHMARK:
 BM #2 - Chiseled "□" on the West Side of the Wheel Chair Ramp at the southeast corner of Meridian & Orient Elev. = 1293.19 (NAVD 88)

N-10142.53, E-17174.93
 Sta. 0+00.00, Begin SWS Line 2c = Sta. 3+28.30, SWS Line 2
 Connect to Prop. Manhole, Grout, & Seal Tight.

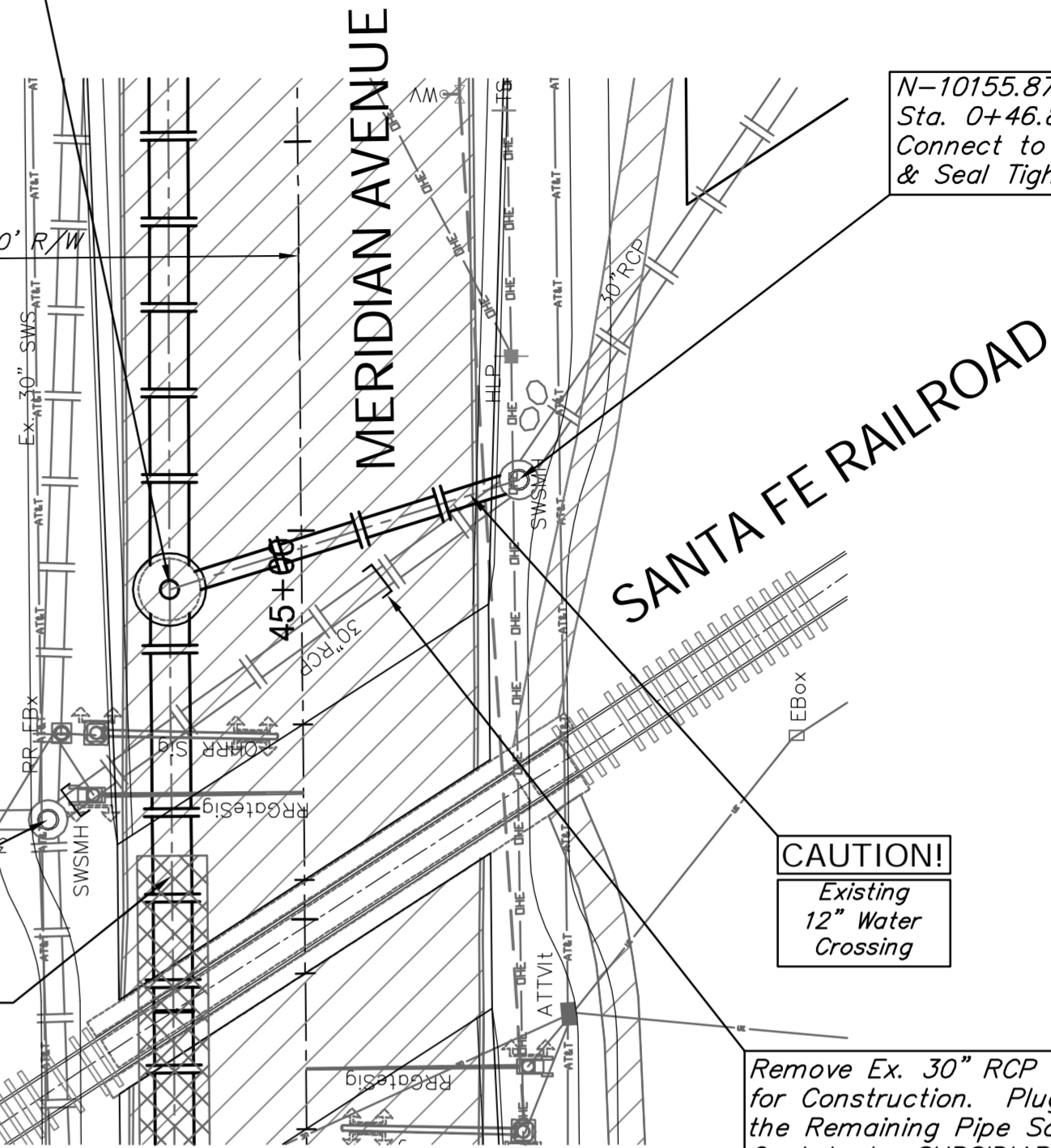
N-10155.87, E-17219.86
 Sta. 0+46.87, End SWS Line 2c
 Connect to Ex. Manhole, Grout, & Seal Tight.

Plug & Abandon the Remaining Pipe Northeast of Ex. Manhole. Cost to be SUBSIDIARY to the Lump Sum Bid Item "Removal of Existing Structures".

Remove Ex. 30" RCP as Necessary for Construction. Plug & Abandon the Remaining Pipe Southwest. Cost to be SUBSIDIARY to the Lump Sum Bid Item "Removal of Existing Structures".

MERIDIAN INDUSTRIAL PARK ADDITION

SWS Line 2



SWS Line 2c

