

MKEC
ENGINEERING CONSULTANTS, INC.
ALL N. WEST ROAD
WICHITA, KANSAS 67203

STATE OF KANSAS
DEPARTMENT OF TRANSPORTATION



PLAN AND PROFILE OF PROPOSED
LINCOLN STREET BRIDGE AND DAM IMPROVEMENTS
OVER ARKANSAS RIVER
FEDERAL AID PROJECT

WICHITA, SEDGWICK COUNTY, KANSAS
CITY OF WICHITA BRIDGE PROJECT NO. 472-84833 (OCA # 715724)

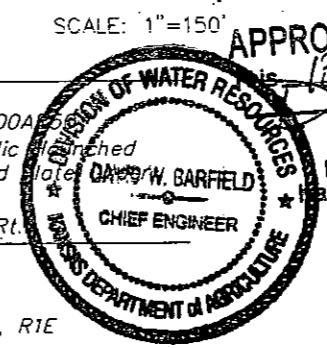
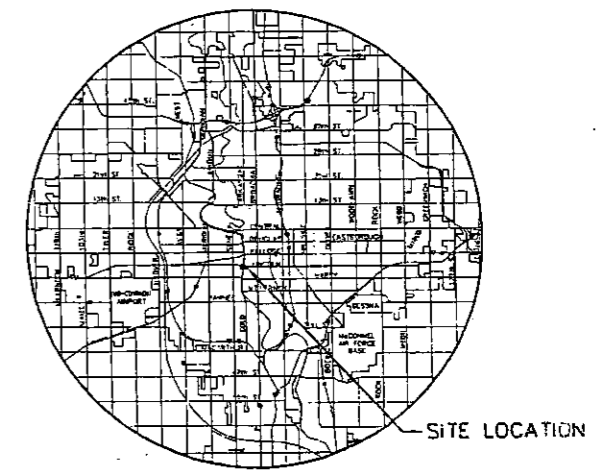
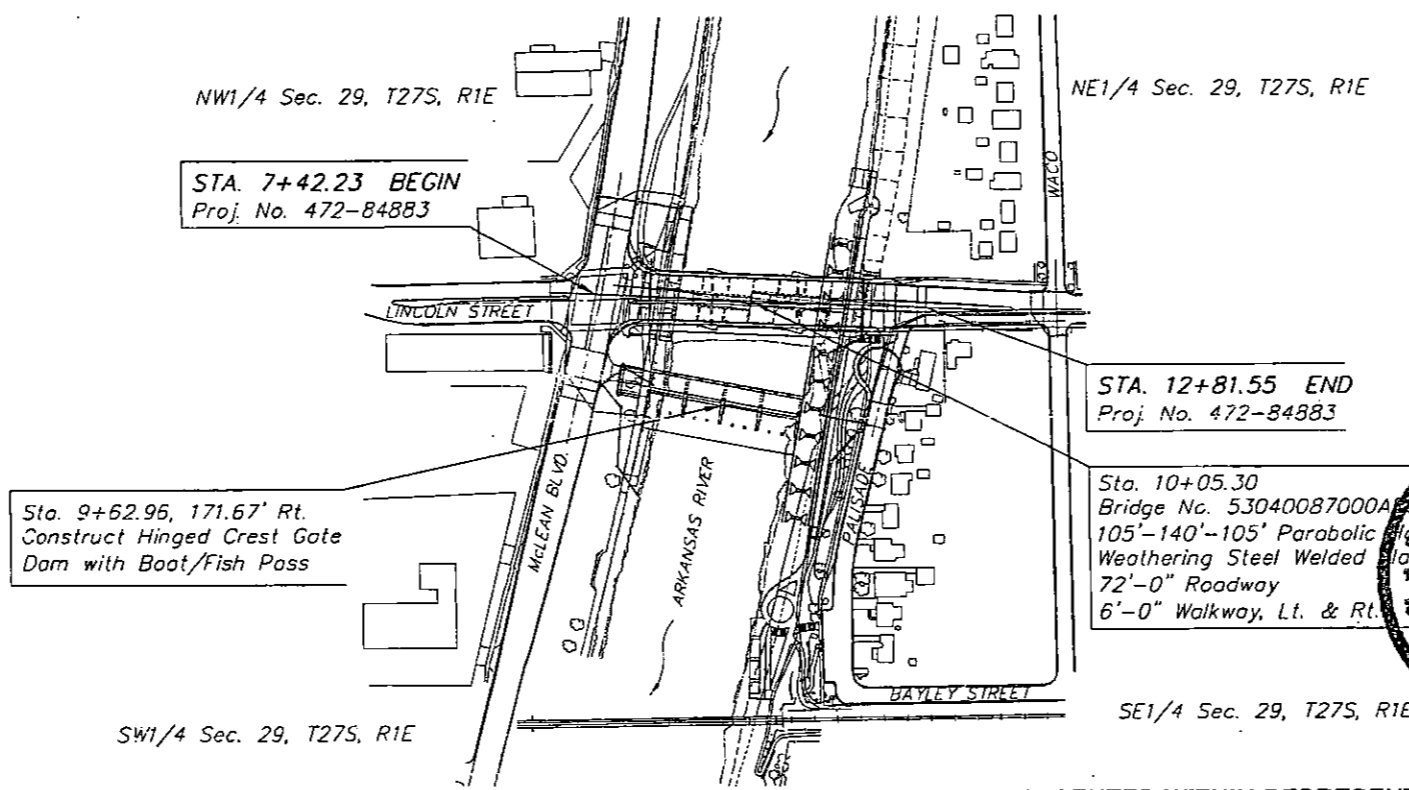
STATE	PROJECT NO.	YEAR	SHEET NO.	TOTAL SHEETS
KANSAS	87 N-0361-01	2010	1	169

GRADING
BRIDGE
DAM
BOAT/FISH PASSAGE
SEEDING

DESIGN DESIGNATION

AADT (2006) = 10,200
AADT (2028) = 16,500
DHV = 10%
D = 60%
T = 2%
V = 35 mph
C of A = None
Clear Zone = 6 Ft.

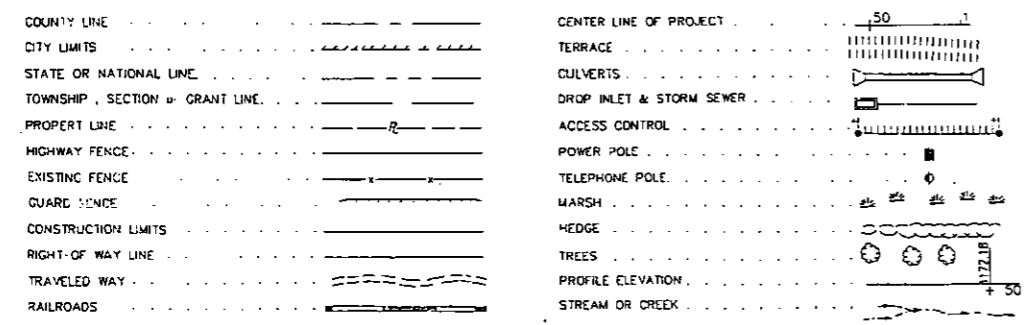
SHEET NO.	SHEET TITLE
1	Title Sheet
18	Grading and Paving Plan
19	Grading and Paving Plan
78	General Plan of Dam
79	Dam Elevations
105	Boat/Fish Pass Plan
114	Portage Dock Plan
157	Cross Section
158	Cross Section
159	Cross Section
160	Cross Section
162	Cross Section
163	Cross Section
164	Cross Section



APPROVED
13 day of September, 2010
DAVID W. BARFIELD, P.E.
Chief Engineer
Division of Water Resources
Kansas Department of Agriculture

NOTE: PROJECT SHALL BE CLOSED FOR TRAFFIC THROUGHOUT CONSTRUCTION

CONVENTIONAL SIGNS



AS-BUILT PLANS: THE INFORMATION PRESENTED WITHIN REPRESENTS THE AS-CONSTRUCTED VARIANCES FROM PLAN ELEVATIONS AND DIMENSIONS. ALL VARIANCES ARE A RESULT OF ALLOWABLE CONSTRUCTION TOLERANCES OR ARE DUE TO EXISTING SITE CONDITIONS DIFFERING FROM WHAT WAS INDICATED IN THE CONSTRUCTION DRAWINGS.

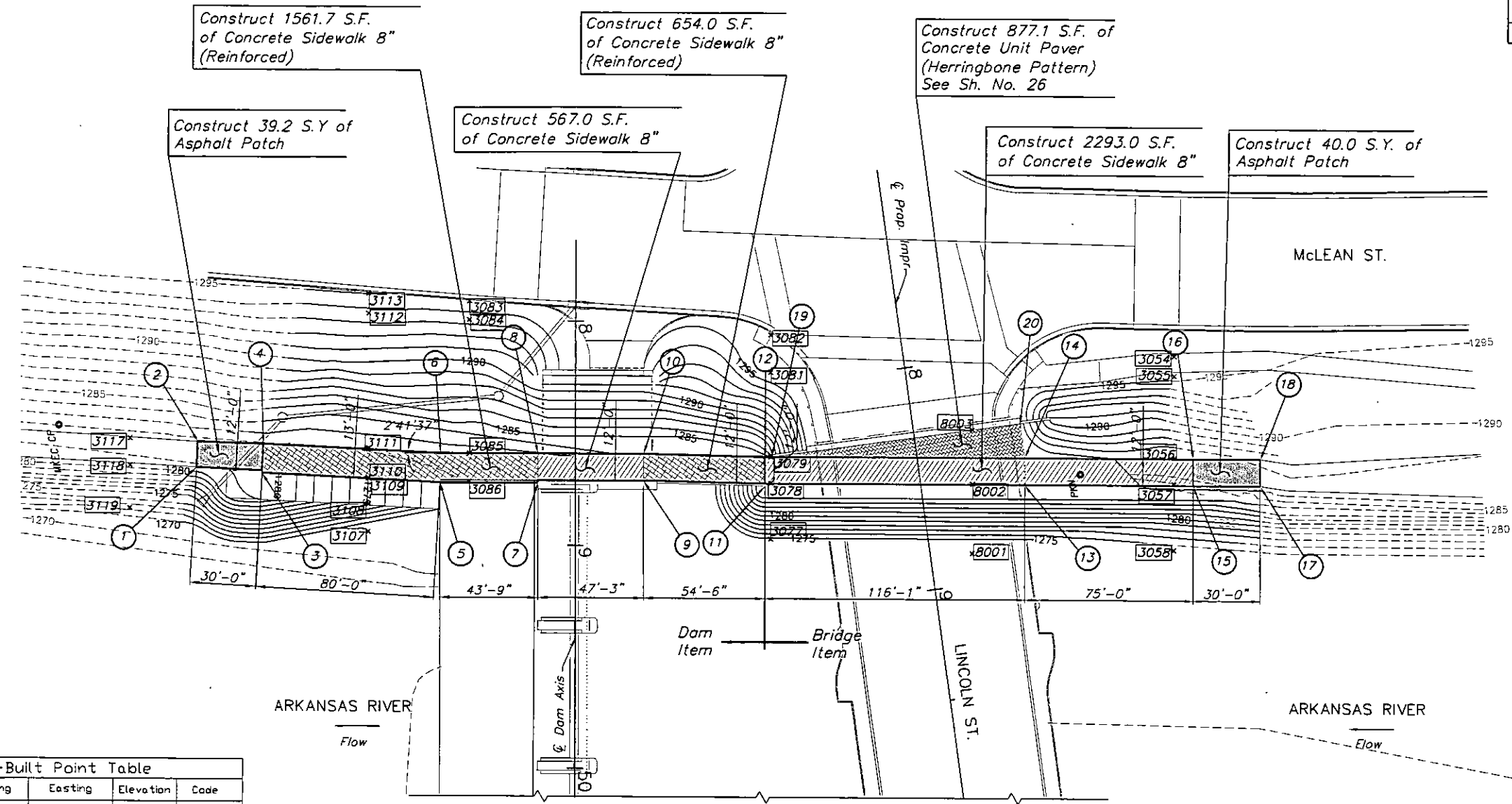
GROSS LENGTH OF PROJECT	539.32 FT.	
EXCEPTIONS	0.00 FT.	
ADDITIONS	0.00 FT.	
NET LENGTH OF PROJECT	539.32 FT.	0.09 MILES
NET LENGTH OF BRIDGES	352.50 FT.	0.07 MILES
NET LENGTH OF ROAD	186.82 FT.	0.02 MILES

PREPARED & SUBMITTED BY
MKEC ENGINEERING CONSULTANTS, INC.
WICHITA, KANSAS
RESOURCES RECEIVED
AUG 30 2010
KS DEPT OF AGRICULTURE
RECOM. FOR APPROVAL-DATE
JIM ARMOUR, P.E.
CITY ENGINEER

MKEC
ENGINEERING CONSULTANTS, INC.
ALL N. WEST ROAD
WICHITA, KANSAS 67203

STATE	PROJECT NO.	YEAR	SHEET NO.	TOTAL SHEETS
KANSAS	B7, N-0361-01	2011	18	169

MKEC
ENGINEERING
CONSULTANTS, INC.
411 N. WEBB ROAD
WICHITA, KS. 67206
316-684-9600



LEGEND

- Concrete Sidewalk 4"
- Concrete Sidewalk 8"
- Concrete Sidewalk 8" (Reinforced)
- Asphalt Patch

WEST BIKE PATH PAVING AND GRADING PLAN

Point #	Northing	Easting	Elevation	Code
3054	1680690.0090	1647008.9310	1295.499	EDGE SW
3055	1680688.5300	1647017.6130	1295.310	EDGE SW
3056	1680662.1080	1647053.6950	1286.748	EDGE SW
3057	1680679.7950	1647065.0720	1286.498	EDGE SW
3058	1680674.4250	1647094.2010	1275.818	TDE
3077	1680498.1760	1647057.6660	1274.399	TDE
3078	1680502.7240	1647033.0060	1285.007	EDGE SW
3079	1680504.8900	1647021.4830	1285.215	EDGE SW
3081	1680511.5850	1646984.3700	1295.972	EDGE SW
3082	1680514.6180	1646967.9640	1295.772	EDGE SW
3083	1680384.3370	1646929.2600	1294.859	TDP CURB
3084	1680382.6850	1646937.5000	1294.315	TDP
3085	1680372.1580	1646996.0440	1281.728	TDP CURB
3086	1680369.6520	1647008.5020	1281.471	EDGE SW
3107	1680321.4510	1647022.7740	1272.698	TDE
3108	1680323.8070	1647010.5870	1274.910	EDGE CONC
3109	1680325.8050	1646999.3110	1274.769	TDE
3110	1680325.7220	1646999.0140	1281.025	EDGE SW
3111	1680328.1040	1646986.4220	1281.232	EDGE SW
3112	1680339.1380	1646926.7010	1294.349	TDP
3113	1680340.7050	1646917.9570	1295.070	TDP CURB
3117	1680222.7880	1646962.5810	1281.587	EDGE SW
3118	1680220.6280	1646974.4460	1281.016	EDGE SW
3119	1680217.1060	1646993.3190	1272.965	TDE
8001	1680585.5210	1647079.7310	1275.362	TDE
8002	1680591.2150	1647049.2740	1284.975	EDGE SW
8003	1680595.5540	1647025.4150	1285.500	

See Sheet 116 for Summary of Quantities.

POINT NO.	STATION/OFFSET	NORTHING	EASTING	ELEVATION	REMARKS
DAM STATION					
1	48+65.83 / 170.45' Rt.	1680250.1027	1646980.7133	1280.91	Match Exist.
2	48+54.50 / 169.83' Rt.	1680252.7595	1646969.6812	1281.58	Match Exist.
3	48+68.24 / 140.59' Rt.	1680279.0370	1646988.4767	1281.00	Face of Walk
4	48+55.25 / 139.98' Rt.	1680281.9814	1646975.8146	1281.27	Back of Walk
5	48+72.00 / 60.66' Rt.	1680356.9802	1647006.6013	1281.00	Face of Walk
6	48+59.00 / 60.35' Rt.	1680359.6275	1646993.8700	1281.27	Back of Walk
7	48+72.00 / 16.88' Rt.	1680400.0433	1647014.5024	1282.40	Face of Walk
8	48+59.00 / 16.88' Rt.	1680402.3894	1647001.7160	1282.67	Back of Walk
9	48+71.00 / 30.38' Lt.	1680446.6980	1647022.0460	1283.80	Face of Walk
10	48+59.00 / 30.38' Lt.	1680448.8637	1647010.2432	1284.05	Back of Walk
11	48+73.00 / 84.88' Lt.	1680499.9422	1647033.8483	1285.00	Face of Walk
12	48+60.00 / 84.88' Lt.	1680502.2883	1647021.0617	1285.25	Back of Walk
LINCOLN STREET STATION					
13	8+59.08 / 46.34' Lt.	1680614.2968	1647053.8131	1285.00	Face of Walk
14	8+47.19 / 48.00' Lt.	1680616.4623	1647042.0101	1285.25	Back of Walk
15	8+69.43 / 120.62' Lt.	1680688.0654	1647067.3480	1286.59	Face of Walk
16	8+57.55 / 122.28' Lt.	1680690.2470	1647055.5628	1286.84	Back of Walk
17	8+73.58 / 150.34' Lt.	1680717.5728	1647072.7620	1286.86	Match Exist.
18	8+61.69 / 151.99' Lt.	1680719.7384	1647060.9590	1287.08	Match Exist.
19	8+31.57 / 64.00' Rt.	1680505.2321	1647021.6019		Paver Elev.
20	8+31.55 / 48.00' Lt.	1680617.1332	1647026.3838	1285.57	Paver Elev.

**LINCOLN STREET BRIDGE AND
DAM IMPROVEMENTS OVER
ARKANSAS RIVER**

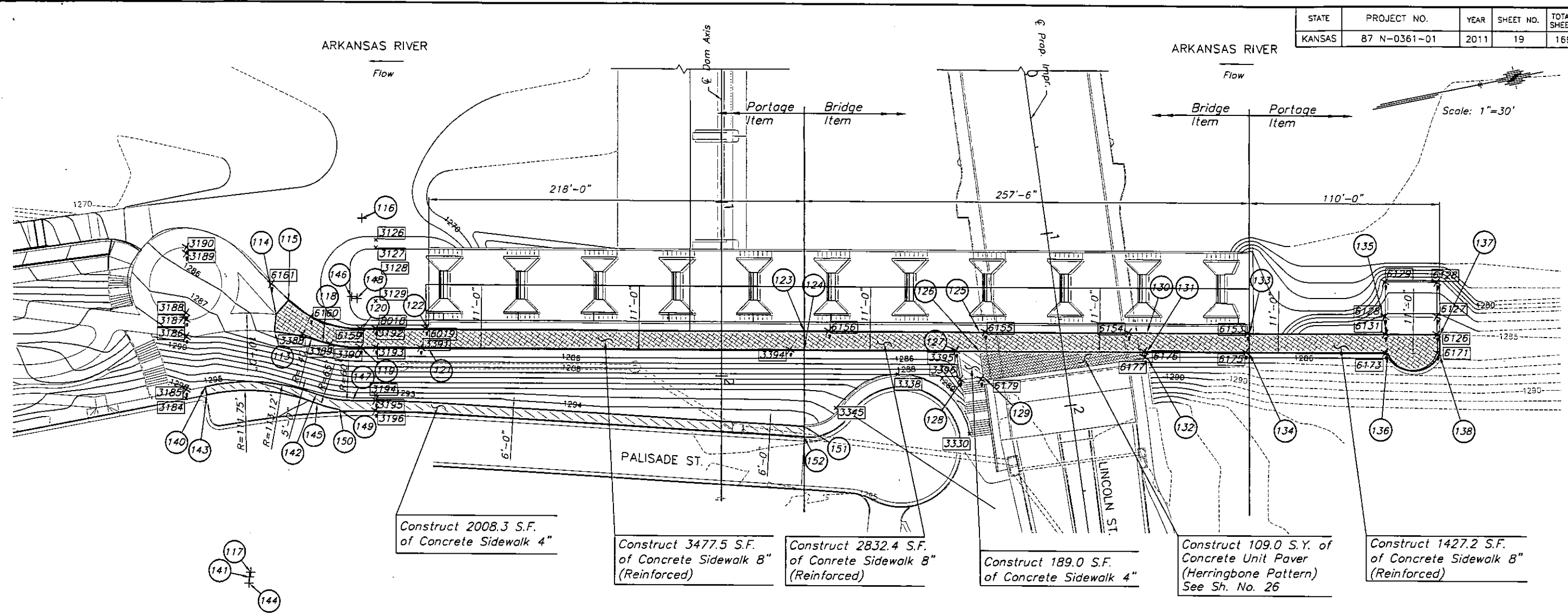
**BIKE PATH
GRADING
AND
PAVING PLAN**

DESIGN BY: JRA
DRAWN BY: DPG
CHECKED BY: KJS
ISSUED: 1/24/2011
REVISION: AS-BUILT 4/26/2013
SHEET NO. 18 of 169

PLOTTED: Monday, April 24, 2013 @ 10:28AM

STATE	PROJECT NO.	YEAR	SHEET NO.	TOTAL SHEETS
KANSAS	87 N-0361-01	2011	19	169

MKEC
ENGINEERING
CONSULTANTS, INC.
411 N. WEBB ROAD
WICHITA, KS. 67206
316-684-9600



EAST BANK PORTAGE AND SIDEWALK PAVING AND GRADING PLAN

Point #	Northing	Easting	Elevation	Code
3126	14001.45034	137268.9816	1271.340	TOP
3127	140014.4388	137269.3442	1271.130	FL
3128	140014.1603	137270.8418	1270.910	FL
3129	140013.9761	137271.8712	1268.810	FL
3184	140004.0218	137274.8467	1295.990	TOP CURB
3185	140004.1038	137274.4327	1296.020	EDGE SW
3186	140004.5643	137271.9417	1287.900	EDGE SW
3187	140004.7112	137271.1273	1287.710	EDGE SW
3188	140004.7614	137270.8144	1287.720	EDGE CONC
3189	140005.2828	137267.9930	1285.690	EDGE CONC
3190	140005.3372	137267.7068	1285.480	EDGE SW
3192	140013.7332	137273.1795	1285.000	EDGE SW
3193	140013.5778	137274.0630	1285.230	EDGE SW
3194	140013.1634	137276.3331	1294.530	TOP
3195	140013.1113	137276.5698	1294.860	EDGE SW
3196	140013.0210	137277.0582	1294.690	EDGE SW
3330	140041.0688	137283.1938	1295.050	RWALL
3338	140038.1467	137279.7545	1294.820	RWALL
3345	140034.9372	137280.8328	1294.610	RWALL
3388	140010.1898	137272.7871	1285.230	EDGE SW
3389	140011.4532	137273.5105	1285.230	EDGE SW
3390	140012.8638	137273.9362	1285.190	EDGE SW

Point #	Northing	Easting	Elevation	Code
3391	140015.6907	137274.4531	1285.220	EDGE SW
3394	140033.2746	137277.6870	1285.190	EDGE SW
3395	140041.1438	137279.1399	1285.210	EDGE SW
3396	140041.0914	137280.5362	1285.510	EDGE SW
6019	140016.1133	137273.5898	1273.480	12" RWALL
6126	140064.0952	137282.4335	1285.020	EDGE CONC
6127	140064.2489	137281.5956	1284.970	EDGE CONC
6128	140064.5470	137279.9703	1283.240	EDGE CONC
6129	140062.0964	137279.5238	1283.340	EDGE CONC
6130	140061.7932	137281.1648	1284.980	EDGE CONC
6131	140061.6479	137281.9808	1285.020	EDGE CONC
6153	140055.1241	137280.7834	1285.050	EDGE CONC
6154	140049.4956	137279.7608	1284.990	EDGE CONC
6155	140042.6842	137278.5014	1284.980	EDGE CONC
6156	140035.2717	137277.1295	1284.990	EDGE CONC
6159	140013.0188	137273.0340	1284.970	EDGE CONC
6160	140010.7351	137272.0662	1284.990	EDGE CONC
6161	140009.1163	137270.1712	1294.980	EDGE CONC

POINT NO.	STATION/OFFSET	NORTHING	EASTING	ELEVATION	REMARKS
DAM STATION:					
113	51+75.84 / 259.91' Rt.	1680106.1597	1647269.4937	1285.43	Back of Walk
114	51+65.89 / 258.94' Rt.	1680108.9145	1647259.8806	1285.23	Back of Walk PT
115	51+58.46 / 252.24' Rt.	1680117.6337	1647253.1742	1285.00	Face of Walk
116	51+10.19 / 208.72' Rt.	1680147.5423	1647286.5921	-	Radius Point
117	53+15.18 / 273.56' Rt.	1680067.5925	1647404.0766	-	Radius Point
118	51+81.69 / 231.34' Rt.	1680133.2108	1647280.4067	1285.23	Back of Walk PRC
119	51+85.19 / 208.74' Rt.	1680154.8028	1647287.9188	1285.23	Back of Walk PT
120	51+74.19 / 208.73' Rt.	1680156.8050	1647277.1026	1285.00	Face of Walk PT
121	51+85.19 / 170.13' Rt.	1680192.7870	1647294.8935	1285.23	Back of Walk
122	51+74.19 / 170.13' Rt.	1680194.7721	1647284.0741	1285.00	Face of Walk
123	51+74.19 / 47.87' Lt.	1680409.1929	1647323.4155	1285.00	Face of Walk
124	51+85.19 / 47.87' Lt.	1680407.2078	1647334.2349	1285.23	Back of Walk
125	51+74.19 / 149.38' Lt.	1680509.0279	1647341.7330	1285.00	Face of Walk
126	51+85.19 / 149.38' Lt.	1680507.0428	1647352.5524	1285.23	Back of Walk
127	51+85.19 / 137.26' Lt.	1680495.1256	1647350.3659	1285.23	Back of Walk
128	52+01.61 / 139.55' Lt.	1680494.4144	1647366.9339	1285.50	Bottom of Step
129	51+99.96 / 151.44' Lt.	1680506.4033	1647367.4485	1285.57	Paver Elev.
130	51+74.19 / 246.31' Lt.	1680604.3656	1647359.2253	1285.00	Face of Walk
131	51+85.19 / 246.31' Lt.	1680602.3804	1647370.0447	1285.23	Back of Walk
132	51+88.68 / 246.79' Lt.	1680602.2294	1647373.5640	1285.30	Paver Elev.
133	51+74.19 / 305.37' Lt.	1680662.4651	1647369.8853	1285.00	Face of Walk
134	51+85.19 / 305.37' Lt.	1680660.4800	1647380.7047	1285.23	Back of Walk
135	51+74.19 / 385.37' Lt.	1680741.1516	1647384.3225	1285.00	Face of Walk
136	51+85.19 / 385.37' Lt.	1680739.1665	1647395.1419	1285.23	Back of Walk
137	51+74.19 / 415.37' Lt.	1680770.6591	1647389.7365	1285.00	Face of Walk
138	51+85.19 / 415.45' Lt.	1680768.7472	1647400.5693	1285.23	Back of Walk

POINT NO.	STATION/OFFSET	NORTHING	EASTING	ELEVATION	REMARKS
DAM STATION:					
140	52+07.83 / 300.45' Rt.	1680060.5192	1647293.6404	1295.90	Back of Walk PC
141	53+17.87 / 274.26' Rt.	1680066.4166	1647406.6035	-	Radius Point
142	52+11.73 / 235.14' Rt.	1680124.0465	1647309.2678	1294.90	Back of Walk PRC
143	52+12.60 / 299.60' Rt.	1680060.4870	1647298.4887	1295.82	Face of Walk PC
144	53+21.52 / 274.57' Rt.	1680065.4562	1647410.1311	-	Radius Point
145	52+17.13 / 234.67' Rt.	1680123.5360	1647314.6561	1294.90	Face of Walk PRC
146	51+55.44 / 214.39' Rt.	1680154.6148	1647257.6386	-	Radius Point
147	52+15.43 / 213.85' Rt.	1680144.3264	1647316.7499	1294.84	Back of Walk PT
148	51+56.41 / 211.47' Rt.	1680157.3174	1647259.1240	-	Radius Point
149	52+20.63 / 221.50' Rt.	1680135.8592	1647320.4799	1294.75	Face of Walk PT
150	52+21.63 / 221.47' Rt.	1680135.7054	1647321.4680	1294.73	Match Exist. Curb
151	52+29.06 / 48.10' Lt.	1680399.5121	1647377.4208	1294.52	Back of Walk
152	52+35.05 / 47.80' Lt.	1680398.1325	1647383.2621	1294.40	Match Exist. Curb

LEGEND

-
-
-
-

**LINCOLN STREET BRIDGE AND
DAM IMPROVEMENTS OVER
ARKANSAS RIVER**

**PORTAGE AND
SIDEWALK
PAVING AND
GRADING PLAN**
SHEET TITLE
472-84883
PROJECT NUMBER

DESIGN BY: JRA
DRAWN BY: DPG
CHECKED BY: KJS

ISSUED: 1/24/2011
REVISED: AS-BUILT 4/26/2013

SHEET NO.
19 of 169

PLOTTED: Monday, April 27, 2011 @ 10:28 AM

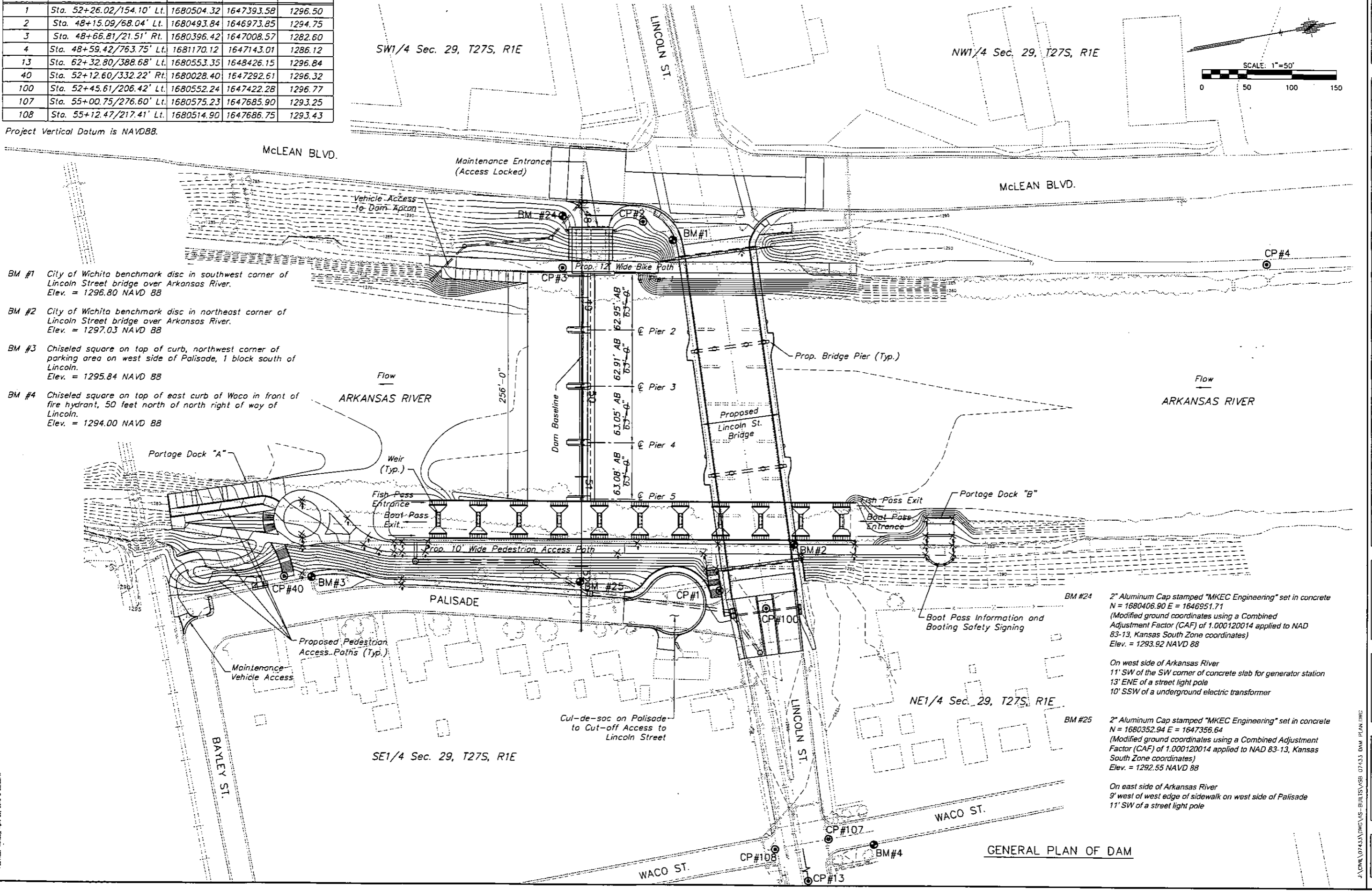
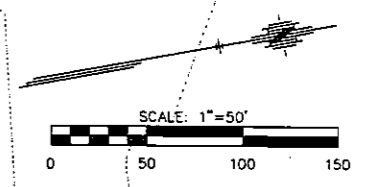
J:\WORK\07433\DWG\AS-BUILT\REVISED\07433_WALKS EAST.DWG

SURVEY CONTROL TABLE				
Point	Dam Sta./Offset	Northing	Easting	Elevation
1	Sta. 52+26.02/154.10' Lt.	1680504.32	1647393.58	1296.50
2	Sta. 48+15.09/68.04' Lt.	1680493.84	1646973.85	1294.75
3	Sta. 48+66.81/21.51' Rt.	1680396.42	1647008.57	1282.60
4	Sta. 48+59.42/76.375' Lt.	1681170.12	1647143.01	1286.12
13	Sta. 62+32.80/388.68' Lt.	1680553.35	1648426.15	1296.84
40	Sta. 52+12.60/332.22' Rt.	1680028.40	1647292.61	1296.32
100	Sta. 52+45.61/206.42' Lt.	1680552.24	1647422.28	1296.77
107	Sta. 55+00.75/276.60' Lt.	1680575.23	1647685.90	1293.25
108	Sta. 55+12.47/217.41' Lt.	1680514.90	1647686.75	1293.43

Project Vertical Datum is NAVD88.

STATE	PROJECT NO.	YEAR	SHEET NO.	TOTAL SHEETS
KANSAS	B7 N-0361-01	2011	78	169

MKEC
ENGINEERING
CONSULTANTS, INC.
411 N. WEBB ROAD
WICHITA, KS. 67206
316-684-9600



- BM #1 City of Wichita benchmark disc in southwest corner of Lincoln Street bridge over Arkansas River. Elev. = 1296.80 NAVD 88
- BM #2 City of Wichita benchmark disc in northeast corner of Lincoln Street bridge over Arkansas River. Elev. = 1297.03 NAVD 88
- BM #3 Chiseled square on top of curb, northwest corner of parking area on west side of Palisade, 1 block south of Lincoln. Elev. = 1295.84 NAVD 88
- BM #4 Chiseled square on top of east curb of Waco in front of fire hydrant, 50 feet north of north right of way of Lincoln. Elev. = 1294.00 NAVD 88

BM #24 2" Aluminum Cap stamped "MKEC Engineering" set in concrete
N = 1680406.90 E = 1646951.71
(Modified ground coordinates using a Combined Adjustment Factor (CAF) of 1.000120014 applied to NAD 83-13, Kansas South Zone coordinates)
Elev. = 1293.92 NAVD 88

On west side of Arkansas River
11' SW of the SW corner of concrete slab for generator station
13' ENE of a street light pole
10' SSW of a underground electric transformer

BM #25 2" Aluminum Cap stamped "MKEC Engineering" set in concrete
N = 1680352.94 E = 1647356.64
(Modified ground coordinates using a Combined Adjustment Factor (CAF) of 1.000120014 applied to NAD 83-13, Kansas South Zone coordinates)
Elev. = 1292.55 NAVD 88

On east side of Arkansas River
9' west of west edge of sidewalk on west side of Palisade
11' SW of a street light pole

**LINCOLN STREET BRIDGE AND
DAM IMPROVEMENTS OVER
ARKANSAS RIVER**

**GENERAL
PLAN
OF DAM**
SHEET TITLE
472-848B3
PROJECT NUMBER

DESIGN BY JAG
DRAWN BY DPG
CHECKED BY JRA

ISSUED 1/24/2011
REVISED AS-BUILT 4/26/2013

SHEET NO.
78 of 169

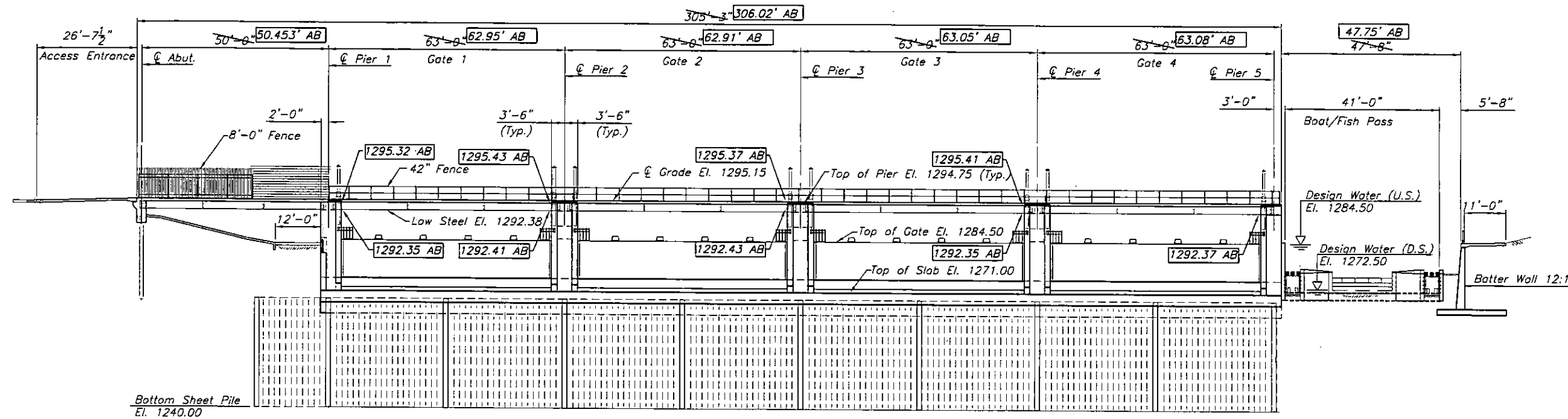
PLANNING, INC. 4/26/2013 02:28PM

J:\WORK\0743\DWG\AS-BUILT\SR-07433-DAM-PLAN.DWG

STATE	PROJECT NO.	YEAR	SHEET NO.	TOTAL SHEETS
KANSAS	87 N-0361-01	2011	79	169

MKEC
ENGINEERING
CONSULTANTS, INC.

411 N. WEBB ROAD
WICHITA, K.S. 67206
316-684-9600



Bottom Sheet Pile
El. 1240.00

DAM - SOUTH ELEVATION
SCALE: 1" = 16'

Note:
See Foundation Plan for placement of sheet pile

**LINCOLN STREET BRIDGE AND
DAM IMPROVEMENTS OVER
ARKANSAS RIVER**

**DAM
ELEVATIONS**

SHEET TITLE
472-848B3
PROJECT NUMBER

DESIGN BY
JAG
DRAWN BY
DMU
CHECKED BY
KJS

ISSUED
1/24/2011
REVISED
AS-BUILT 4/26/2013

SHEET NO.
79 of 169

PLotted: Monday, April 18, 2012 @ 11:17 AM

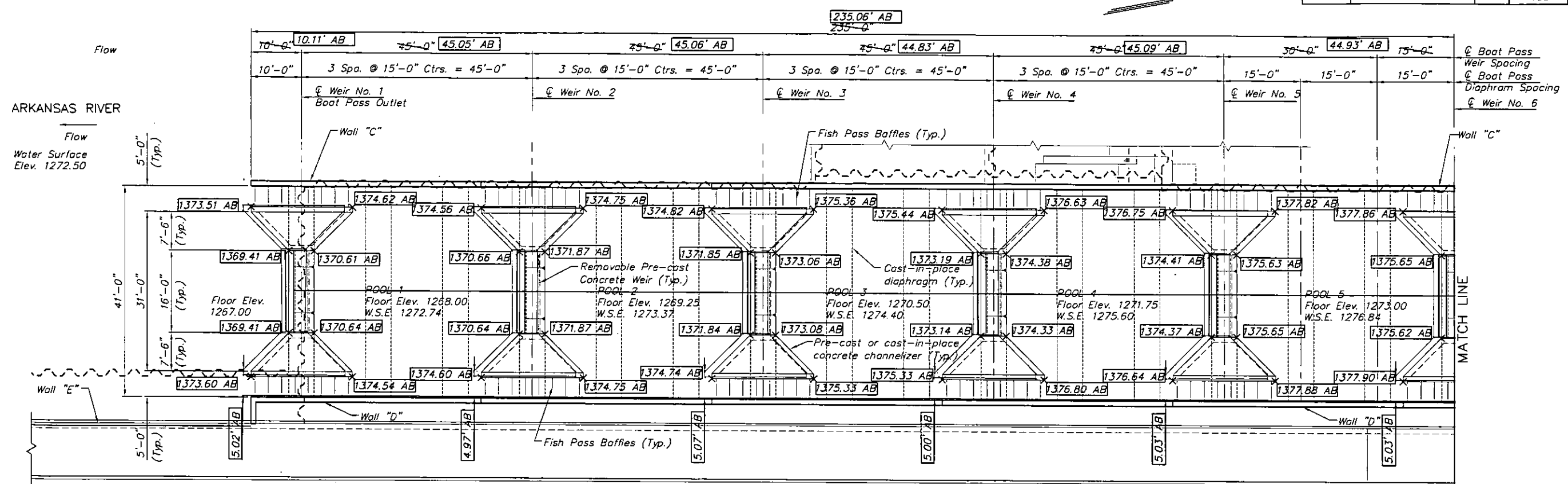
J:\CIVIL\07433\DWG\AS-BUILT\AS-B 07433 DAM ELEV.DWG

STATE	PROJECT NO.	YEAR	SHEET NO.	TOTAL SHEETS
KANSAS	87 N-0361-01	2011	105	169

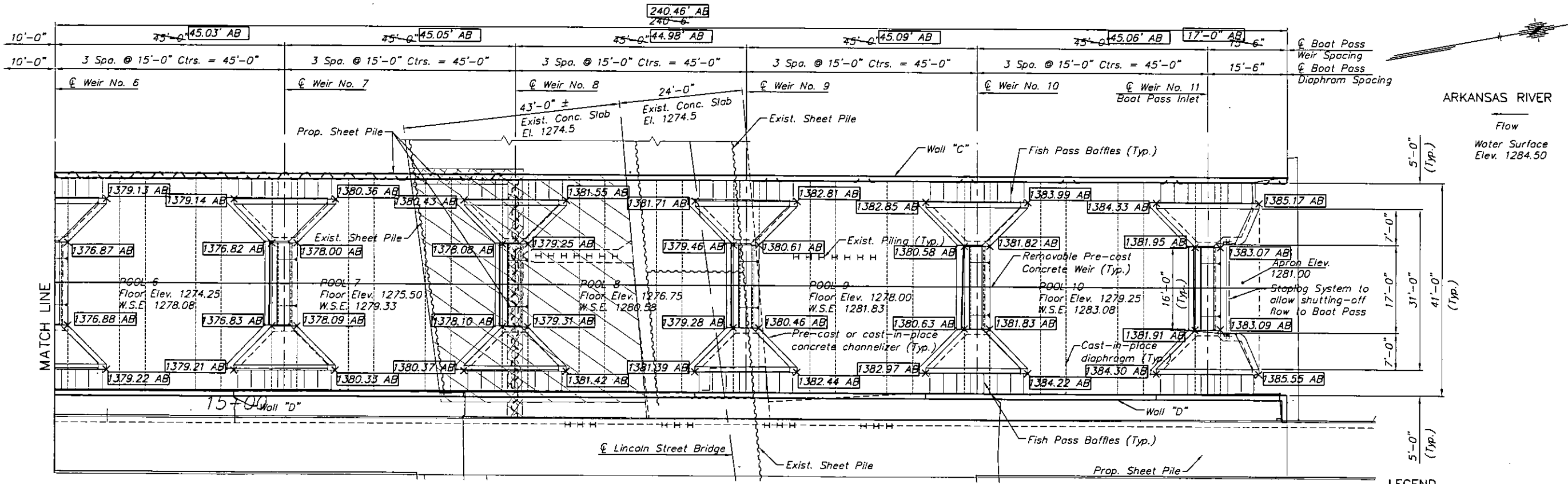
MKEC
ENGINEERING
CONSULTANTS, INC.

411 N. WEBB ROAD
WICHITA, K.S. 67206
316-684-9600

**LINCOLN STREET BRIDGE AND
DAM IMPROVEMENTS OVER
ARKANSAS RIVER**



PARTIAL BOAT/FISH PASS PLAN
SCALE: 3/32" = 1'-0"



PARTIAL BOAT/FISH PASS PLAN
SCALE: 3/32" = 1'-0"

Note: Brush blast, power wash and water soak exist. concrete surface immediately prior to casting new concrete. (subsidiary).

- LEGEND**
- Remove exist concrete slab as necessary to permit driving of proposed sheet pile.
 - Remove exist concrete slab and pier as necessary to clear proposed construction.

**BOAT/FISH
PASS
PLAN**

SHEET TITLE
472-84883
PROJECT NUMBER

DESIGN BY
JAG
DRAWN BY
DPG
CHECKED BY
KJS

ISSUED
1/24/2011
REVISIONS
AS-BUILT 4/26/2013

SHEET NO.
105 of 169

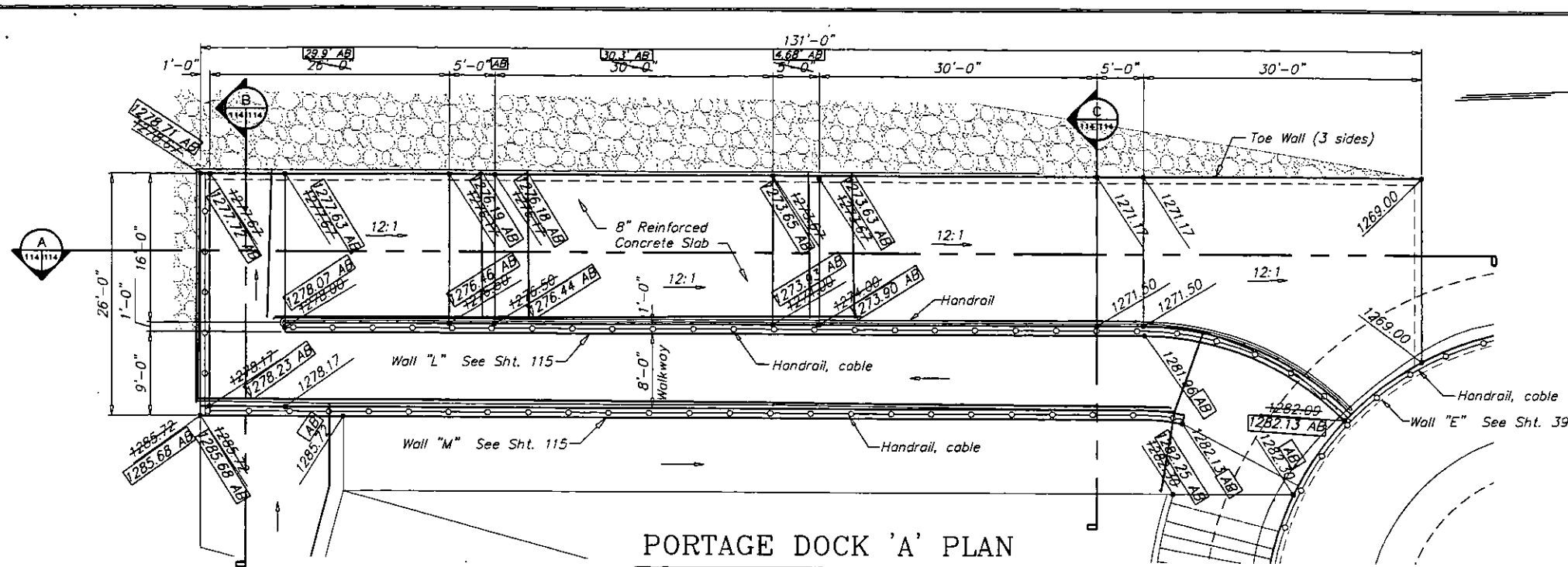
PLOTTER: AutoCAD, April 28, 2013 @ 01:28PM

J:\DWG\04\11\DWG\AS-BUILT\AS-B 07433_R01_ BOAT_PASS PLAN.DWG

STATE	PROJECT NO.	YEAR	SHEET NO.	TOTAL SHEETS
KANSAS	B7 N-0361-01	2011	114	169

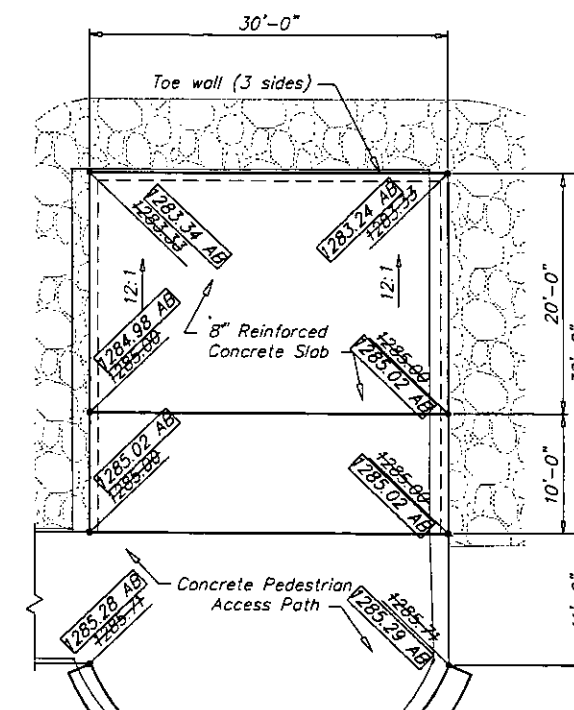
MKEC
ENGINEERING
CONSULTANTS, INC.

411 N. WEBB ROAD
WICHITA, KS. 67206
316-684-9600



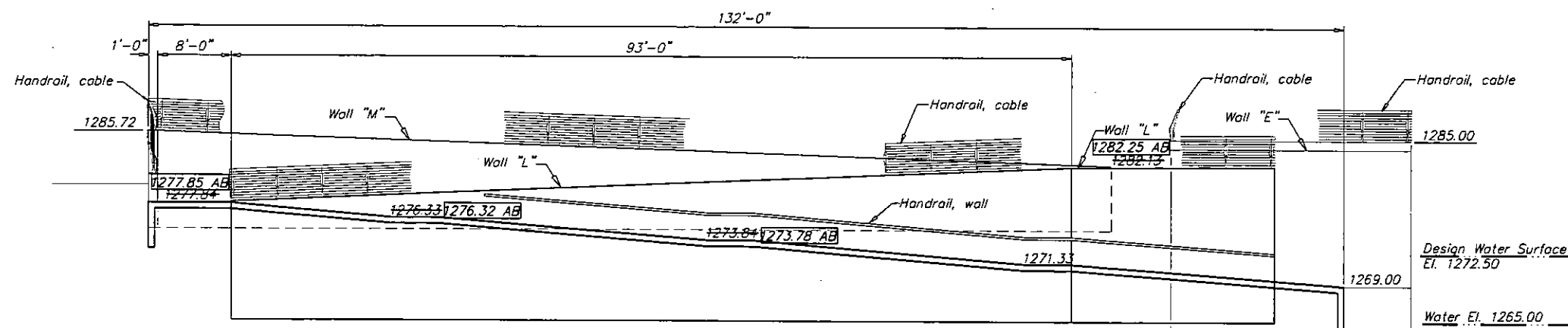
PORTAGE DOCK 'A' PLAN

SCALE: 1/8" = 1'-0"



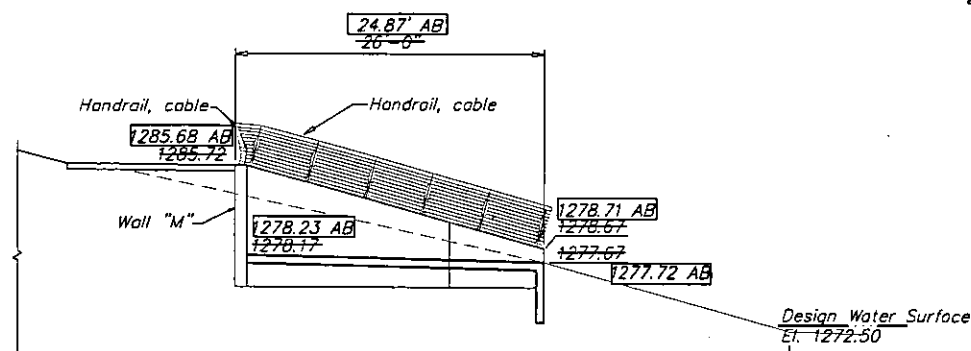
PORTAGE DOCK 'B' PLAN

SCALE: 1/8" = 1'-0"



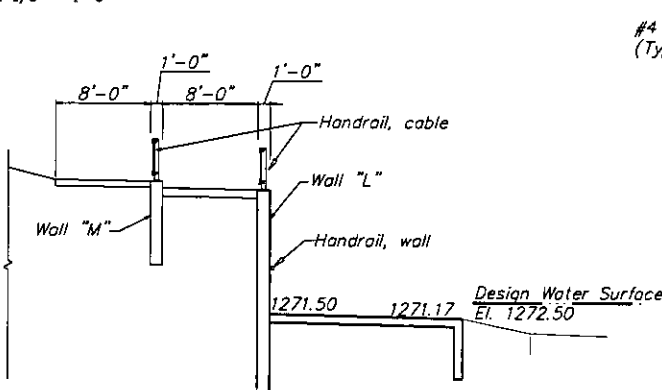
SECTION

SCALE: 1/8" = 1'-0"



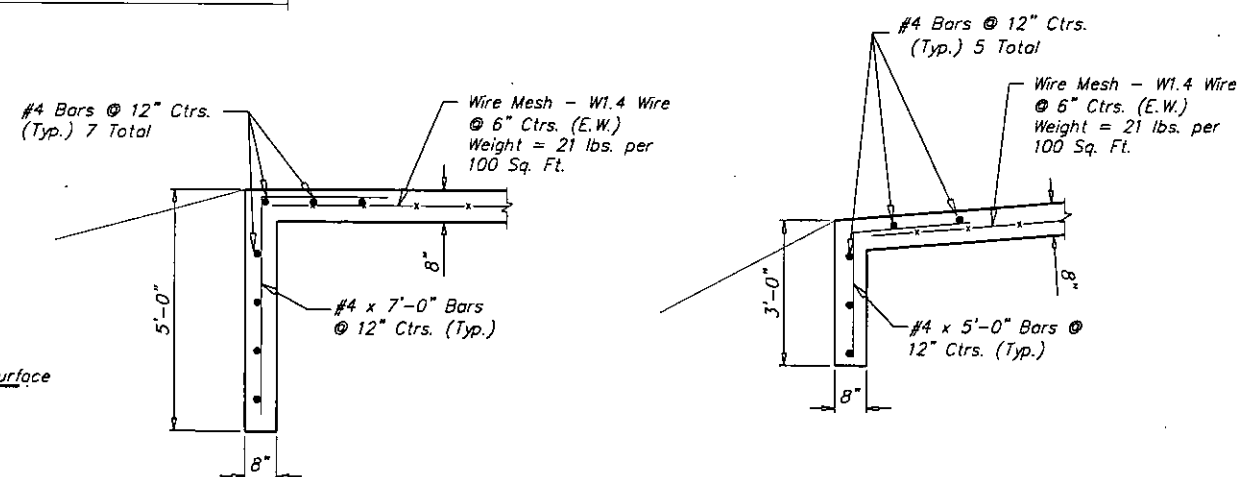
SECTION B

SCALE: 1/8" = 1'-0"



SECTION C

SCALE: 1/8" = 1'-0"



PORTAGE DOCK 'A'

PORTAGE DOCK 'B'

TYPICAL TOE WALL DETAIL

SCALE: 1/2" = 1'-0"

**LINCOLN STREET BRIDGE AND
DAM IMPROVEMENTS OVER
ARKANSAS RIVER**

PORTAGE DOCK PLAN

SHEET TITLE
472-84883
PROJECT NUMBER

DESIGN BY
JAG
DRAWN BY
DPG
CHECKED BY

ISSUED
1/24/2011
REVISED
AS-BUILT 4/26/2013

SHEET NO.
114 of 169

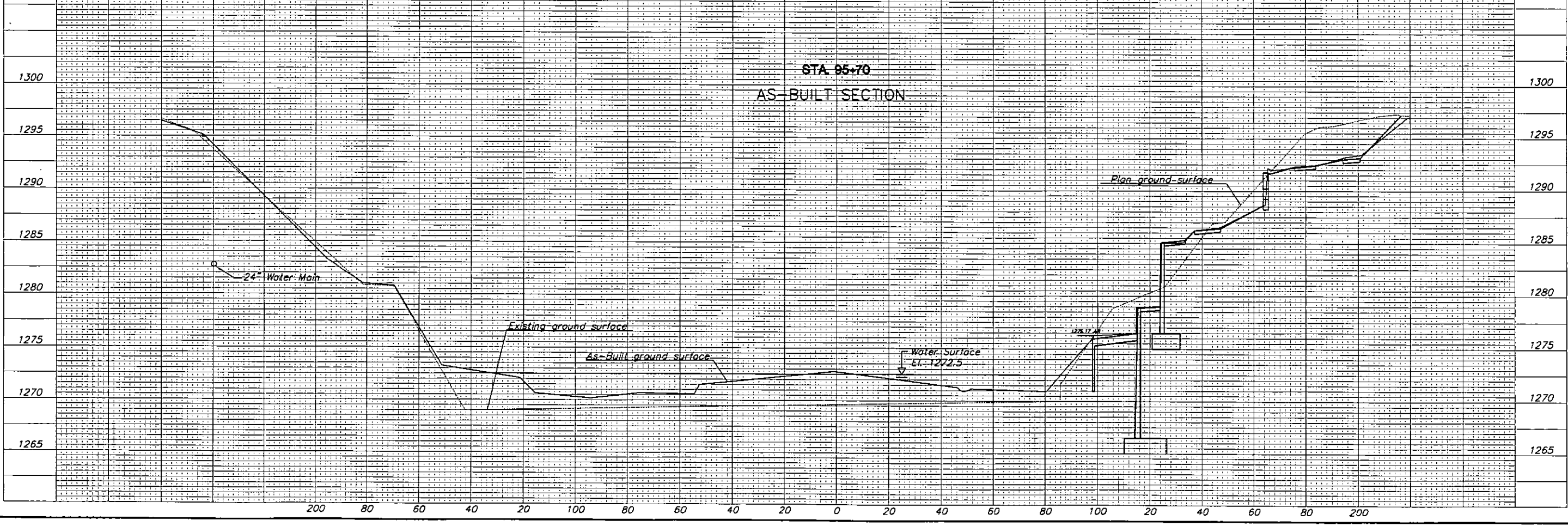
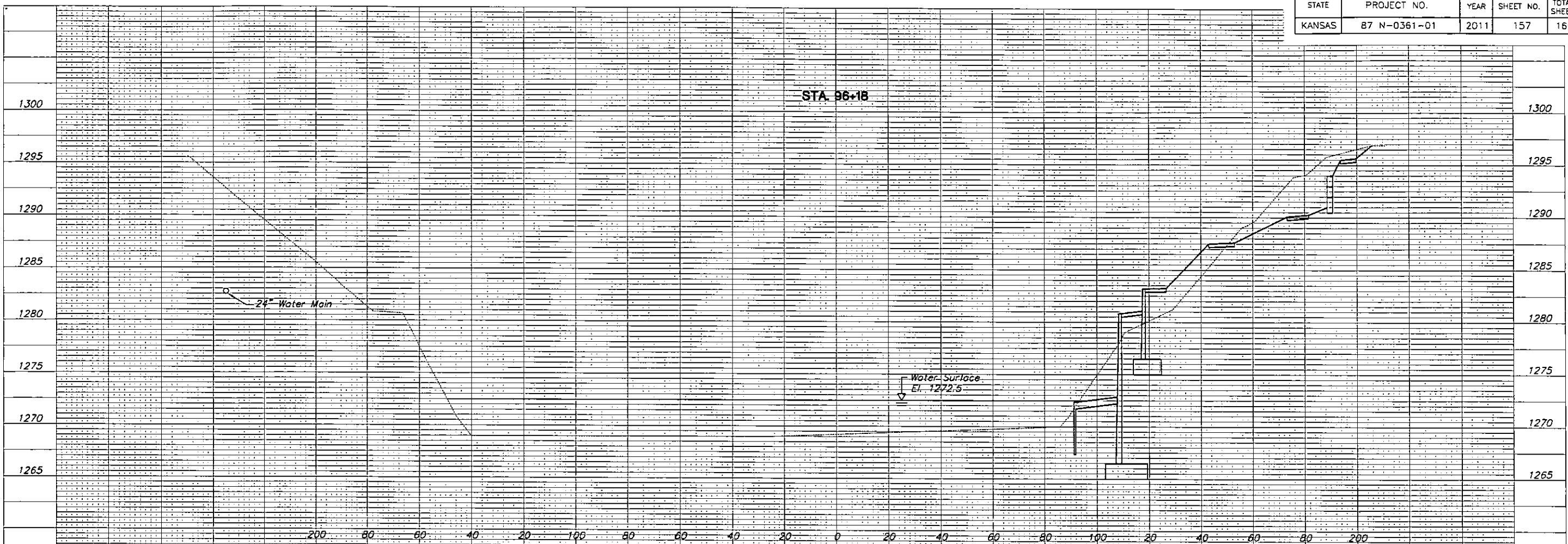
PLOTTED: Monday, April 25, 2011 8:03:05 AM

J:\COWI\07431\DWG\AS-BUILT\AS-BUILT\AS-BUILT\PORT DOCK PLAN.DWG

STATE	PROJECT NO.	YEAR	SHEET NO.	TOTAL SHEETS
KANSAS	87 N-0361-01	2011	157	169

MKEC
ENGINEERING
CONSULTANTS, INC.
411 N. WEBB ROAD
WICHITA, KS. 67206
316-684-9600

**LINCOLN STREET BRIDGE AND
DAM IMPROVEMENTS OVER
ARKANSAS RIVER**



RIVER CROSS SECTIONS

SHEET TITLE
472-84883

PROJECT NUMBER

DESIGN BY
JRA

DRAWN BY
DMU

CHECKED BY

ISSUED
1/24/2011

REVISED
AS-BUILT 4/25/2013

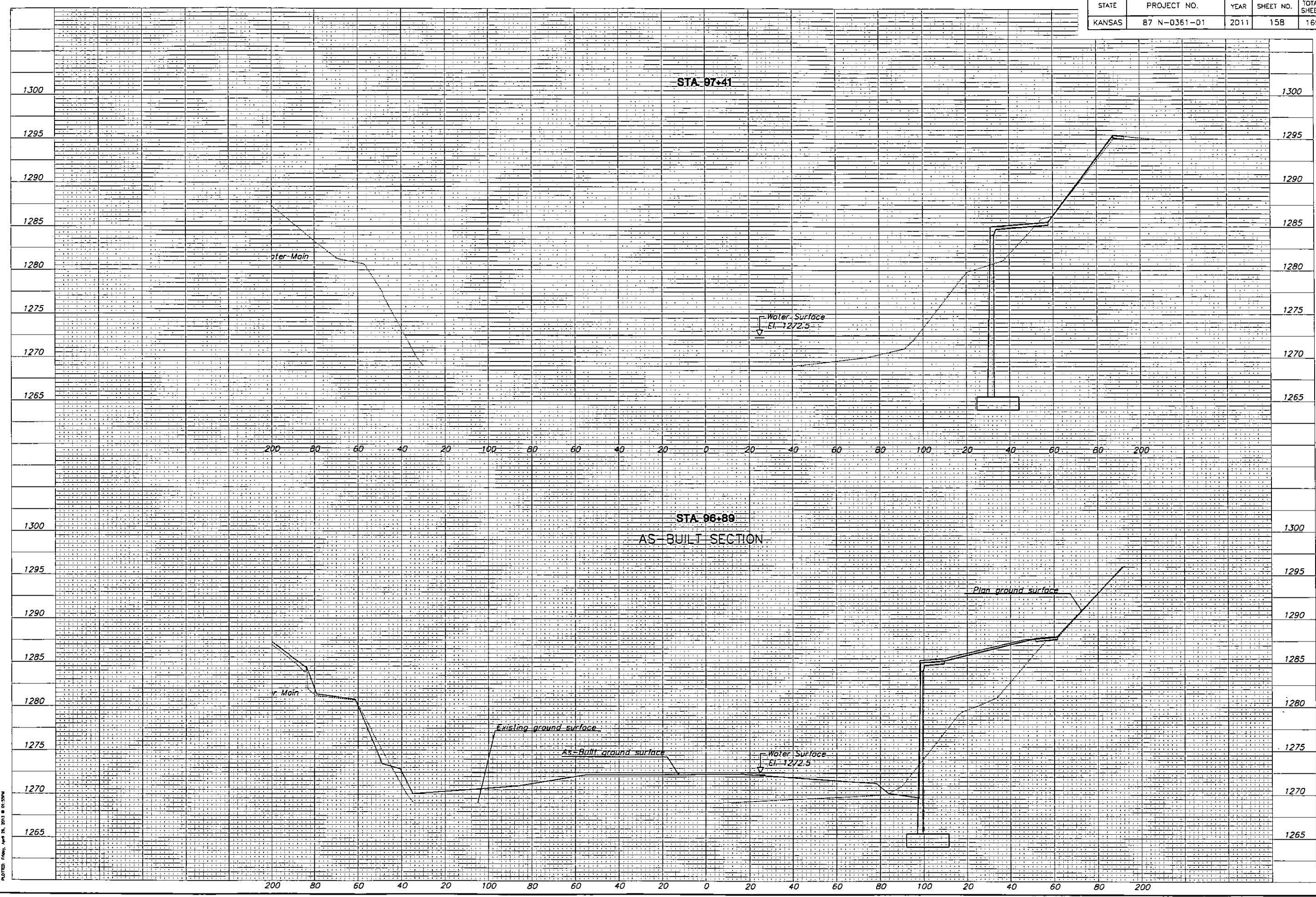
SHEET NO.
157 of 169

PROJECT: 472-84883-01-157

P:\2011\07\15\0157\AS-BUILT\AS-BUILT\AS-BUILT.DWG

STATE	PROJECT NO.	YEAR	SHEET NO.	TOTAL SHEETS
KANSAS	87 N-0361-01	2011	158	169

MKEC
ENGINEERING
CONSULTANTS, INC.
411 N. WEBB ROAD
WICHITA, KS. 67206
316-684-9600



**LINCOLN STREET BRIDGE AND
DAM IMPROVEMENTS OVER
ARKANSAS RIVER**

RIVER CROSS SECTIONS
SHEET TITLE
472-84883
PROJECT NUMBER

DESIGN BY: JRA
DRAWN BY: DMU
CHECKED BY:

ISSUED: 1/24/2011
REVISED: AS-BUILT 4/26/2013

SHEET NO.
158 of 169

P:\CIVIL\07131\WINDY\AS-BUILT\87 N-0361-01-158.DWG

STATE	PROJECT NO.	YEAR	SHEET NO.	TOTAL SHEETS
KANSAS	87 N-0361-01	2011	164	169

MKEC
ENGINEERING
CONSULTANTS, INC.
411 N. WEBB ROAD
WICHITA, K.S. 67206
316-684-9600

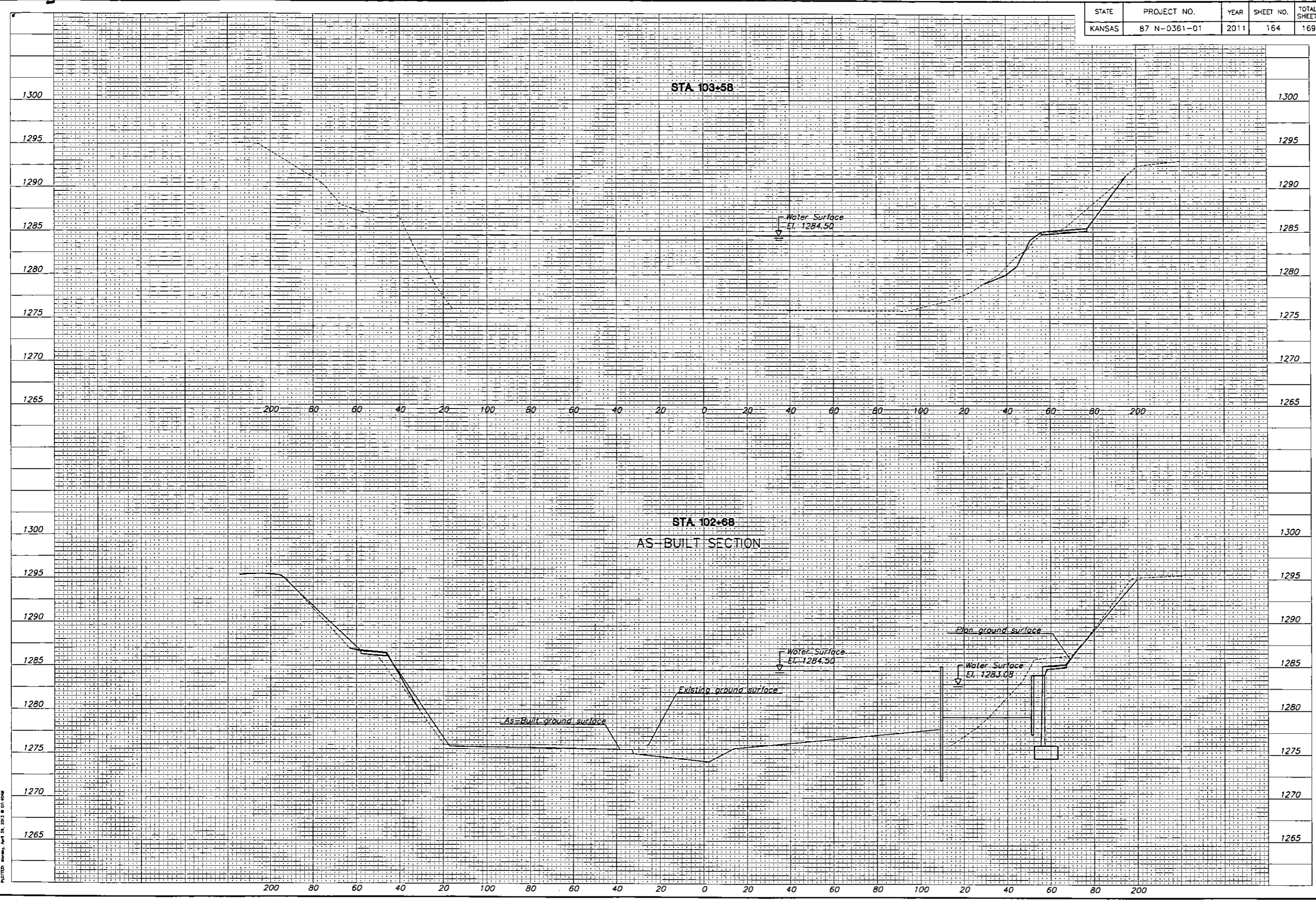
**LINCOLN STREET BRIDGE AND
DAM IMPROVEMENTS OVER
ARKANSAS RIVER**

RIVER CROSS SECTIONS
SHEET TITLE
472-8488.3
PROJECT NUMBER

DESIGN BY
JRA
DRAWN BY
DMU
CHECKED BY

ISSUED
1/24/2011
REVISED
AS-BUILT 4/26/2013

SHEET NO.
164 of 169



PLOTTER: Bentley, Apr 19, 2013 @ 01:40:08
 J:\2011\0714\DWG\AS-BUILT\AS-BUILT\AS-BUILT RIVER X-SECTION.DWG