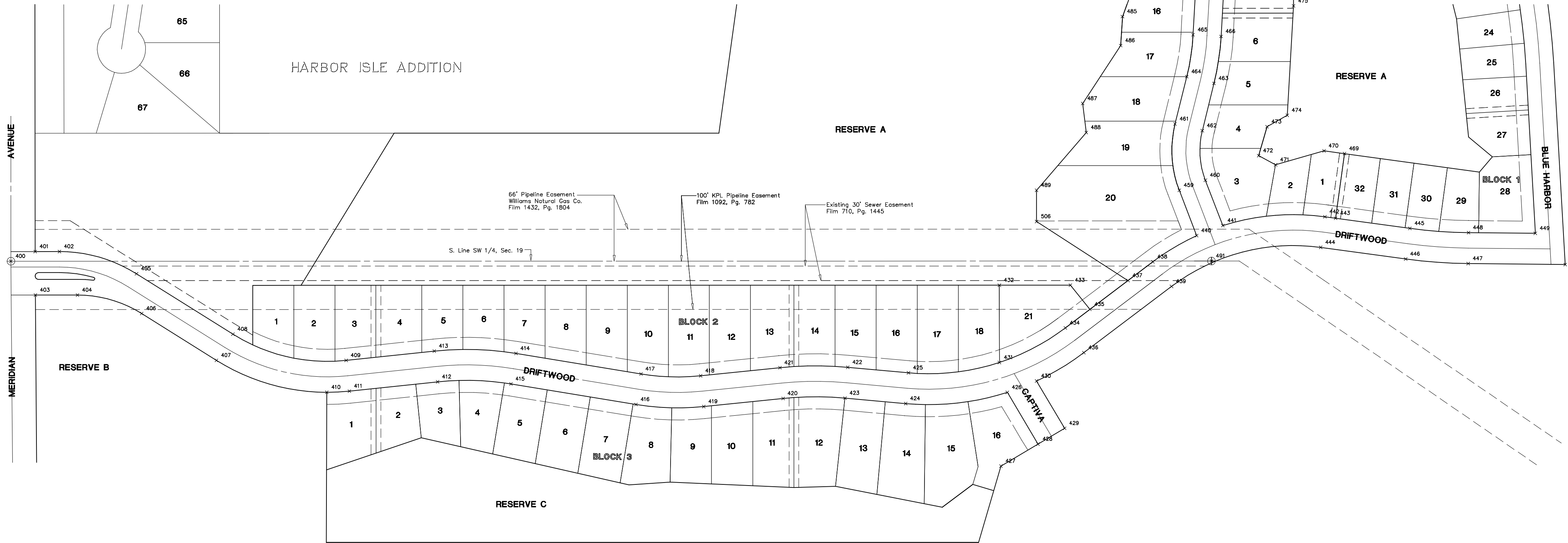


Scale 1" = 150'

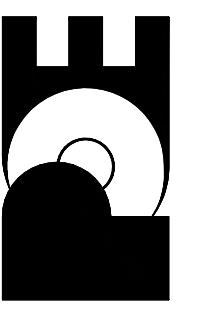


Point No.	Northing	Easting
400	5000.000	5000.000
401	5020.010	5049.997
402	5020.020	5100.317
403	4930.010	5050.541
404	4930.028	5137.735
405	4974.157	5259.798
406	4891.808	5270.636
407	4794.748	5425.362
408	4848.964	5459.371
409	4794.742	5693.600
410	4728.707	5653.609
411	4731.097	5700.326
412	4750.378	5882.782
413	4814.024	5876.056
414	4809.157	6044.971
415	4746.004	6034.591
416	4703.480	6293.325
417	4766.633	6303.704
418	4762.863	6427.197
419	4699.195	6433.706
420	4715.957	6597.680
421	4779.626	6591.172
422	4780.437	6731.639
423	4716.698	6725.866
424	4705.327	6851.416
425	4769.066	6857.189
426	4728.533	7061.743
427	4576.000	7048.501
428	4621.596	7125.263
429	4654.280	7180.288
430	4752.062	7122.206
431	4790.483	7045.305
432	4950.416	7045.273
433	4950.446	7192.233
434	4861.897	7181.713
435	4900.455	7232.693
436	4810.852	7220.320
437	4959.999	7311.421
438	4998.921	7362.882
439	4947.877	7401.489
440	5053.045	7453.648
441	5073.892	7507.772
442	5092.065	7718.831
443	5089.010	7741.207
444	5028.653	7710.175
445	5068.049	7894.761
446	5004.637	7886.105
447	4995.205	8015.394
448	5059.202	8016.033
449	5057.823	8154.263
450	4993.204	8216.020
451	5146.903	7417.497
452	5167.750	7471.621
453	5284.181	7408.889
454	5270.259	7465.193
455	5368.125	7489.393
456	5382.047	7433.088
457	5468.662	7446.116
458	5469.406	7504.025
459	5776.614	7463.433
460	5773.357	7521.342
461	5222.726	7759.460
462	5228.513	7717.065
463	5199.657	7616.885
464	5218.520	7581.685
465	5278.502	7599.121
466	5302.068	7640.863
467	5528.513	7654.122
468	6034.660	7653.152
469	6106.035	7586.207
470	6104.009	7341.344
471	6013.162	7286.800
472	5806.474	7325.821
473	5746.472	7320.065
474	5686.473	7320.919
475	5626.475	7330.425
476	5566.473	7322.344
477	5506.468	7300.048
478	5446.468	7296.198
479	5326.452	7217.646
480	5266.453	7225.098
481	5146.843	7122.219
482	5000.506	7484.224
483	5082.248	7122.107

**HARBOR ISLE 3RD ADDITION
SANITARY SEWER IMPROVEMENTS
COORDINATE POINT LIST**

CITY OF WICHITA, KANSAS
JAMES ARMOUR, P.E. - CITY ENGINEER
Proj.# 468-83106 O.C.A.# 744037

POE & ASSOCIATES, INC.
CONSULTING ENGINEERS
5940 E. Central, Suite 200 • Wichita, KS 67208-4242
Phone 316/685-4114 • FAX 316/685-4444



FINAL

Designed By: J. Ubert / B. Kulla
Drawn By: B. Kulla
Poe Job No.: 1786
Date: February 2004

Sheet
17 of 21