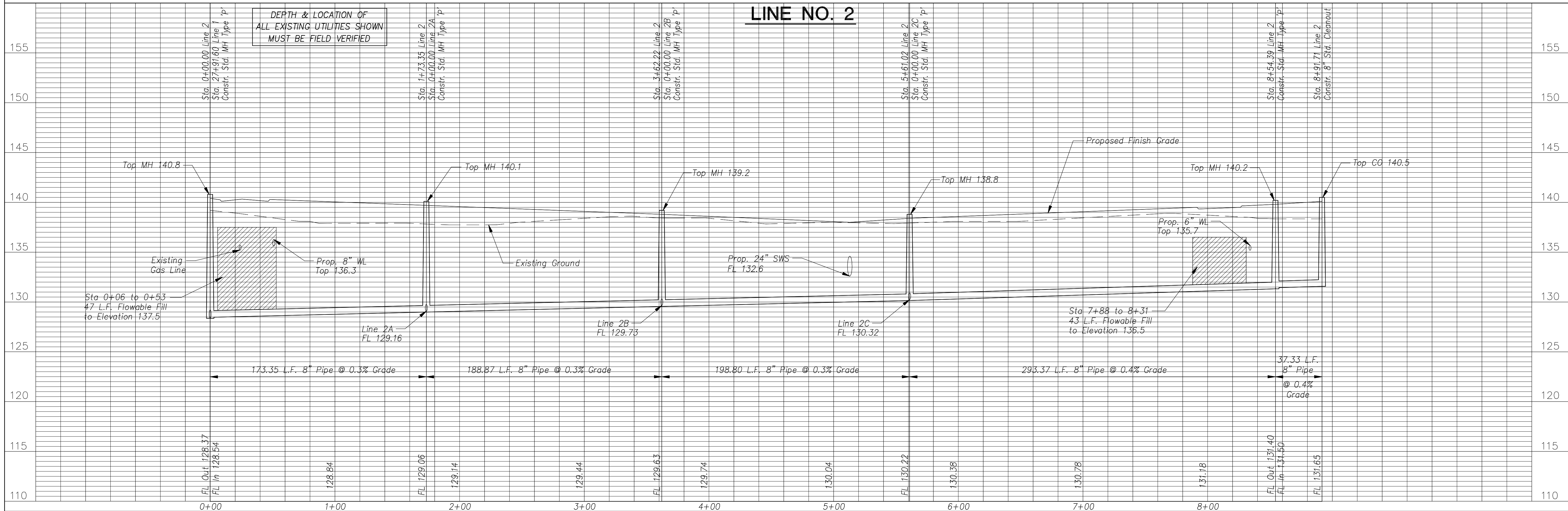


No.	Date	By	Approved	Revision

HARBOR ISLE JRD ADDITION
SANITARY SEWER IMPROVEMENTS
SEWERLINE NO. 2
CITY OF WICHITA, KANSAS
JAMES ARMOUR, P.E. - CITY ENGINEER
Proj.# 488-8306 O.C.A.# 744037



POE & ASSOCIATES, INC.
CONSULTING ENGINEERS
5940 E. Central, Suite 200 • Wichita, KS 67208-4242
Phone 316/685-4114 • FAX 316/685-4444

FINAL

Designed By: J. Ubert / B. Kulla
Drawn By: B. Kulla
Poe Job No.: 1786
Date: February 2004

Sheet 9 of 21