

PUBLIC STORM WATER SEWER

TO SERVE

HOLIDAY INN EXPRESS & SUITES

PROJECT NO. 0139PPD

THE CITY OF WICHITA, KANSAS
GARY JANZEN, P.E. - CITY ENGINEER

OCA NO. 607861

AS-BUILT PLANS - JUNE 2013

INSPECTED BY: GENE RATH, MKEC ENGINEERING CONSULTANTS, INC.
CONSTRUCTED BY: DANCO
SUPERINTENDENT: ROBERT GLASSE
SUPPLIER: WICHITA CONCRETE PIPE

GENERAL NOTES

- UNLESS SHOWN OR OTHERWISE STATED ON THESE DRAWINGS, MATERIALS AND CONSTRUCTION SHALL BE IN ACCORDANCE WITH THE CITY OF WICHITA STANDARD SPECIFICATIONS.
- THE TOPS OF INLETS AND MANHOLES AS NOTED ON THE PLANS MAY VARY SO AS TO MEET PROPOSED TOP OF CURB ELEVATIONS OR PAVEMENT ELEVATIONS. THE FIELD ENGINEER SHALL LOCATE INLETS AND MANHOLES WITH REFERENCE TO PROPOSED PAVING PLANS OF THE PERTINENT STREETS.
- ALL CONCRETE SHALL BE STANDARD PAVING MIX UNLESS OTHERWISE NOTED.
- THE CONTRACTOR SHALL BE RESPONSIBLE FOR PRESERVING PROPERTY IRONS. THE CONTRACTOR SHALL BE REQUIRED TO RE-ESTABLISH ANY PROPERTY IRONS WHICH ARE DAMAGED OR DESTROYED BY HIS CONSTRUCTION OPERATIONS. SUCH IRONS SHALL BE RE-ESTABLISHED BY A LICENSED LAND SURVEYOR IN ACCORDANCE WITH STATE LAWS.
- TREES TO BE REMOVED ARE MARKED \otimes . ALL TREES WHICH IN THE OPINION OF THE FIELD ENGINEER CAN BE SAVED, SHALL BE SAVED.
- CONTRACTOR SHALL NOTIFY UTILITY COMPANIES OF CONSTRUCTION SCHEDULING.
- EXISTING UTILITIES AND THEIR LOCATIONS, AS SHOWN ON THE PLANS REPRESENT THE BEST INFORMATION OBTAINABLE FOR DESIGN. LOCATION INFORMATION HAS BEEN OBTAINED FROM THE VARIOUS COMPANIES AND IS EITHER FROM COMPANY UTILITY DRAWINGS OR COMPANY PROVIDED FIELD LOCATIONS. THE PLAN LOCATIONS SHOWN ARE NOT GUARANTEED. ADDITIONAL EXISTING UTILITIES MAY ALSO BE ENCOUNTERED.
- CONTRACTOR WILL BE REQUIRED TO PROVIDE A MINIMUM ADVANCE NOTICE OF SEVENTY-TWO (72) HOURS TO UTILITY COMPANIES TO STARTING ANY EXCAVATION AS FOLLOWS:

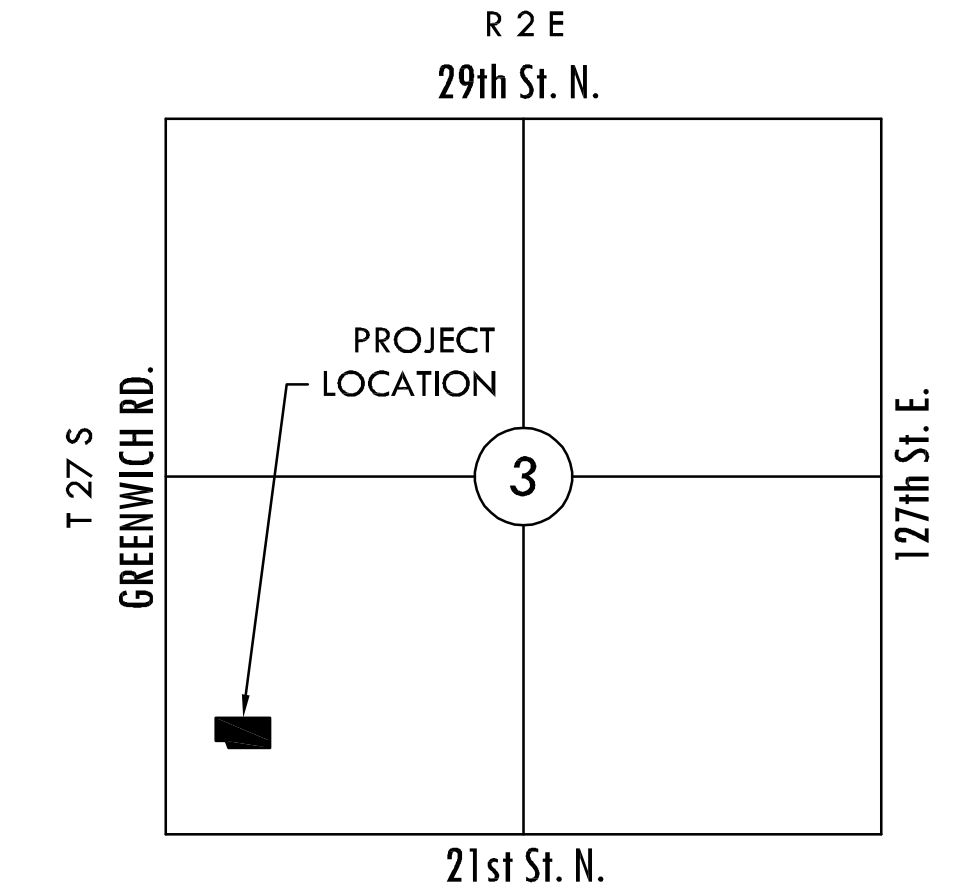
KANSAS ONE-CALL 800-344-7233
OR LOCAL WICHITA 687-2470

THE CONTRACTOR MUST NOTIFY THE FOLLOWING IN CASE OF EMERGENCY:

COX COMMUNICATIONS (CABLE) 262-0661
WESTAR ELECTRIC 383-8600
KANSAS GAS SERVICE (GAS) 832-3101
SBC (TELEPHONE) 800-870-8390
CITY OF WICHITA WATER & SEWER 262-6000
- RUBBLE FROM THE REMOVAL OF MISCELLANEOUS STRUCTURES AND EXCESS EXCAVATION WHICH IS TO BE WASTED SHALL BE DISPOSED OF ON SITES TO BE PROVIDED BY THE CONTRACTOR. THESE SITES SHALL BE APPROVED BY THE ENGINEER AS TO SUITABILITY, APPEARANCE AND SITE LOCATION. LOCATIONS THAT, IN THE OPINION OF THE ENGINEER, WILL LEAVE AN UNSIGHTLY APPEARANCE WILL NOT BE APPROVED. ALL DISPOSAL SITES MUST BE APPROVED BY THE KANSAS DEPARTMENT OF HEALTH AND ENVIRONMENT. MATERIAL EITHER STOCKPILED OR DISPOSED OF IN A FLOOD PLAIN WOULD REQUIRE A KANSAS STATE BOARD OF AGRICULTURE PERMIT. ANY MATERIAL DUMPED IN WATERS OF THE UNITED STATES OR WETLANDS IS SUBJECT TO U.S. CORPS OF ENGINEERS PERMITTING REGULATIONS. ANY MATERIAL BURIED OR STOCKPILED BEYOND APPROVED CONSTRUCTION LIMITS WOULD REQUIRE ADDITIONAL ARCHAEOLOGICAL INVESTIGATIONS UNLESS BURIED IN A PREVIOUSLY APPROVED BORROW LOCATION.
- CONTRACTOR TO COORDINATE WORK WITH OTHER UTILITY AND/OR PAVING CONTRACTORS ON SITE.
- CONTRACTOR SHALL RESEED AND MULCH ALL DISTURBED AREAS. COST SHALL BE CONSIDERED SUBSIDIARY TO SITE RESTORATION. SEE SHEET
- CONTRACTOR TO REFER TO SWPP FILED ON SITE FOR EROSION/SEDIMENT CONTROL.
- WORK DONE UNDER THIS PROJECT IS SUBJECT TO THE CITY OF WICHITA REQUIREMENTS FOR "CONSTRUCTION OF INFRASTRUCTURE IMPROVEMENTS BY PRIVATE CONTRACT." THE CONTRACTOR SHALL BE FAMILIAR AND COMPLY WITH ALL OF THE REQUIREMENTS, INCLUDING BONDING, INSPECTION, TESTING, NOTIFICATION, PROVIDING AS-BUILT DRAWINGS, PAYING FOR ALL NECESSARY CONNECTIONS AND/OR STREET REPAIR FEES AND PROVIDING PIPE MATERIAL AND OTHER CERTIFICATIONS.

PROPOSED IMPERVIOUS=1.5 AC.
PROPOSED PERVIOUS=0.5 AC.
WQ_v=0.09 AC.-FT.
CP_v=0.25 AC.-FT.

POND TABLE		
ELEV.	STORAGE (AC/FT)	DISCHARGE (CFS)
1359	-	-
1360	-	-
1361	-	-
1362	0.60	3.97
1363	1.24	6.66
1364	1.95	8.17
1365	2.72	9.67
1366	3.66	10.97



VICINITY MAP
No Scale

INDEX TO DRAWINGS

SHEET NO.	DESCRIPTION
1	TITLE SHEET
2-3	STORM WATER DETAILS
5	SWS LINE 1
6-7	SWS LINE 2
8	PLAT

BENCHMARKS

BM#1 - Chiseled square front center of curb inlet West side of Access Street 57.2 feet South and 44.6 feet West of the Northwest corner of Lot 15, Block 1, Village at Greenwich Addition. Elev. = 1369.81 NGVD 29

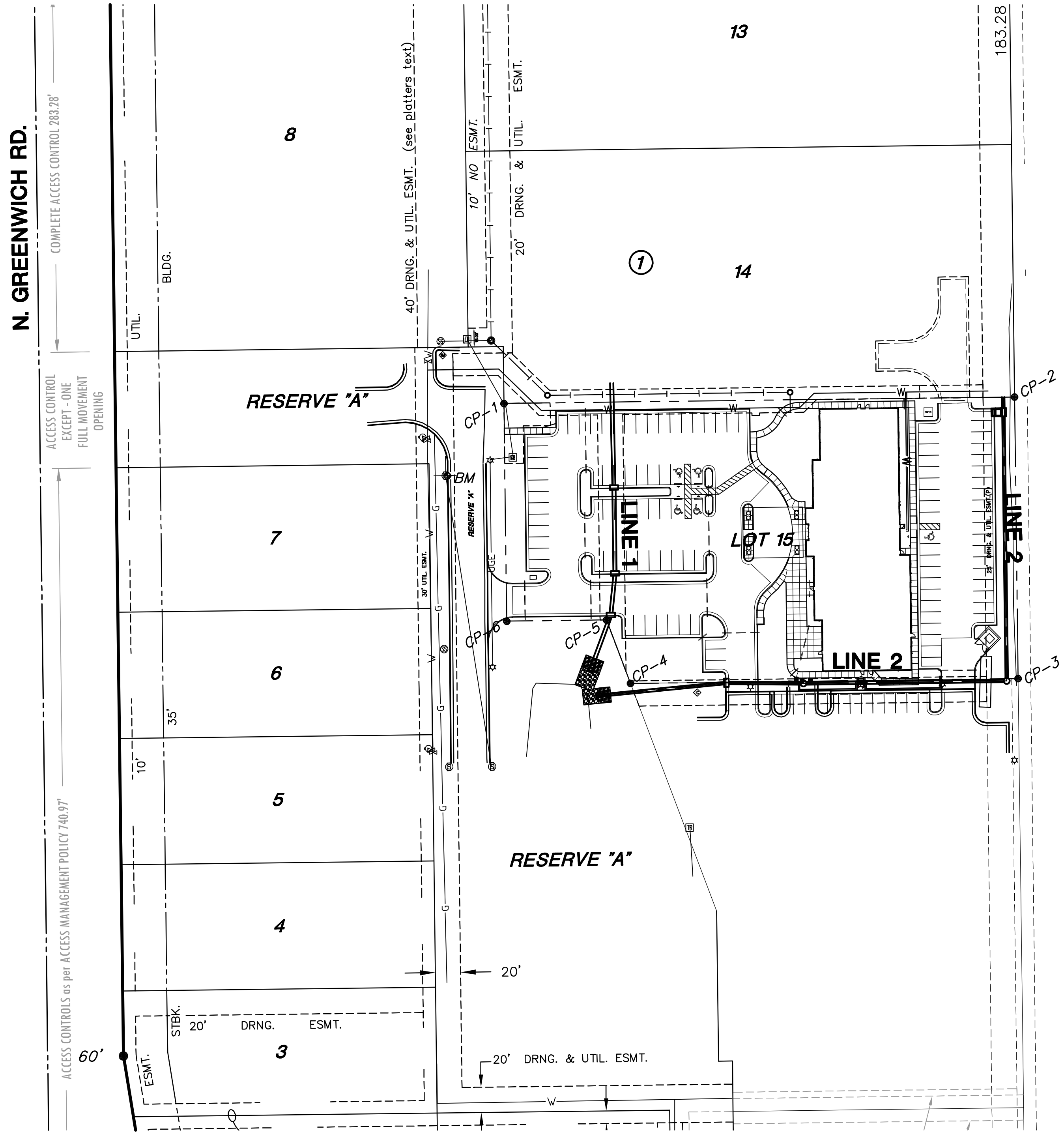
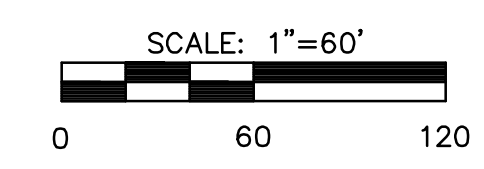
CONTROL POINTS			
POINT	NORTHING	EASTING	DESC.
CP-1	1700665.34	1686577.37	MKEC CP
CP-2	1700670.43	1686981.77	MKEC CP
CP-3	1700447.56	1686984.62	MKEC CP
CP-4	1700443.61	1686677.59	MKEC CP
CP-5	1700494.00	1686658.60	MKEC CP
CP-6	1700492.93	1686579.64	MKEC CP

Engineering *[Signature]* 12-4-12

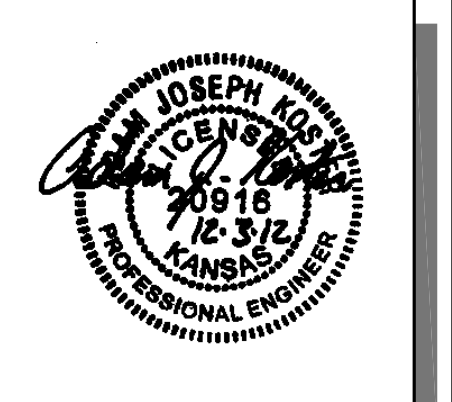
Storm Water *[Signature]* 12-10-12
(Public Works)

NOTE TO CONTRACTORS

Public Property:
Inspection and testing for the storm water sewer is to be provided by a Licensed Consulting Engineering Firm under contract with the Owner/Developer. Said inspection to be in accordance with the City of Wichita Standard Construction Engineering Practices and certified by a Professional Engineer licensed in the state of Kansas. No work shall be performed in dedicated easements or public rights-of-way by the Contractor without such inspection, nor shall any work be commenced without written authorization by the City Engineer. All construction and materials shall comply with the City of Wichita Specifications and Standards (on file and available in the City Engineer's Office).



MKEC
ENGINEERING
CONSULTANTS, INC.
411 N. WEBB ROAD
WICHITA, K.S. 67206
316-684-9600



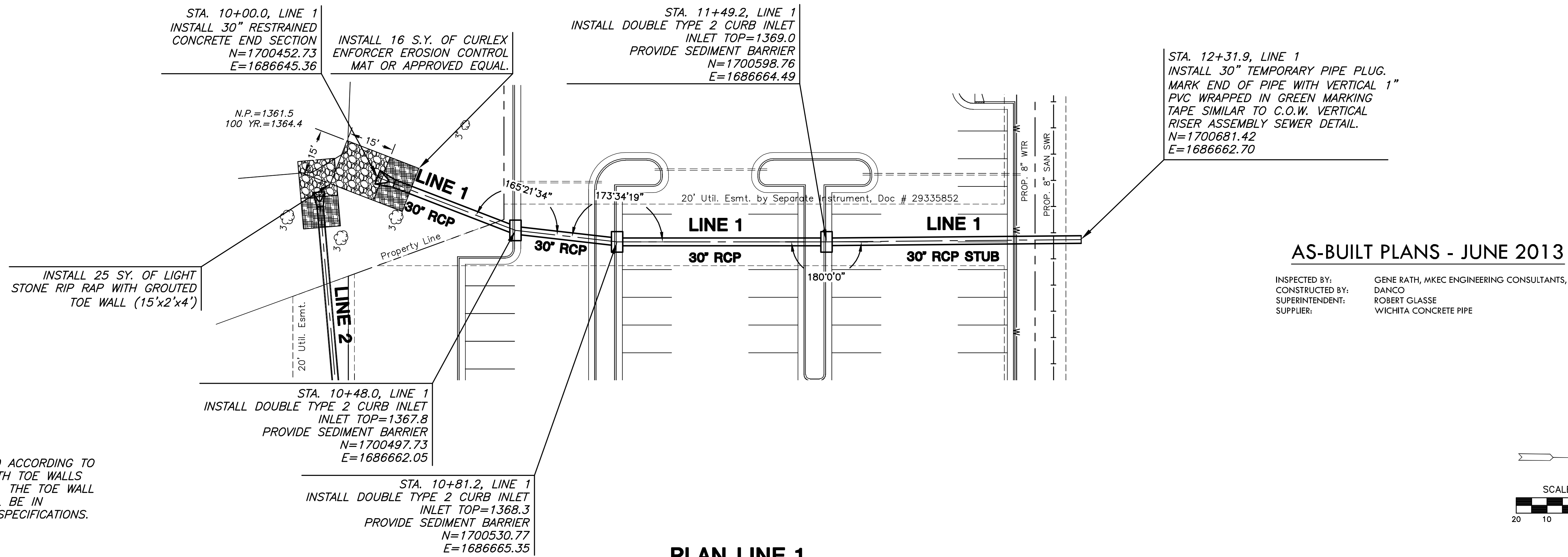
STORM WATER SEWER PLAN FOR
HOLIDAY INN EXPRESS & SUITES
2340 N. GREENWICH ROAD, WICHITA, KS

TITLE SHEET
SHEET TITLE
0139PPD
PROJECT NUMBER

SPE | BKS | A/JK
DESIGNED | DRAWN | CHECKED

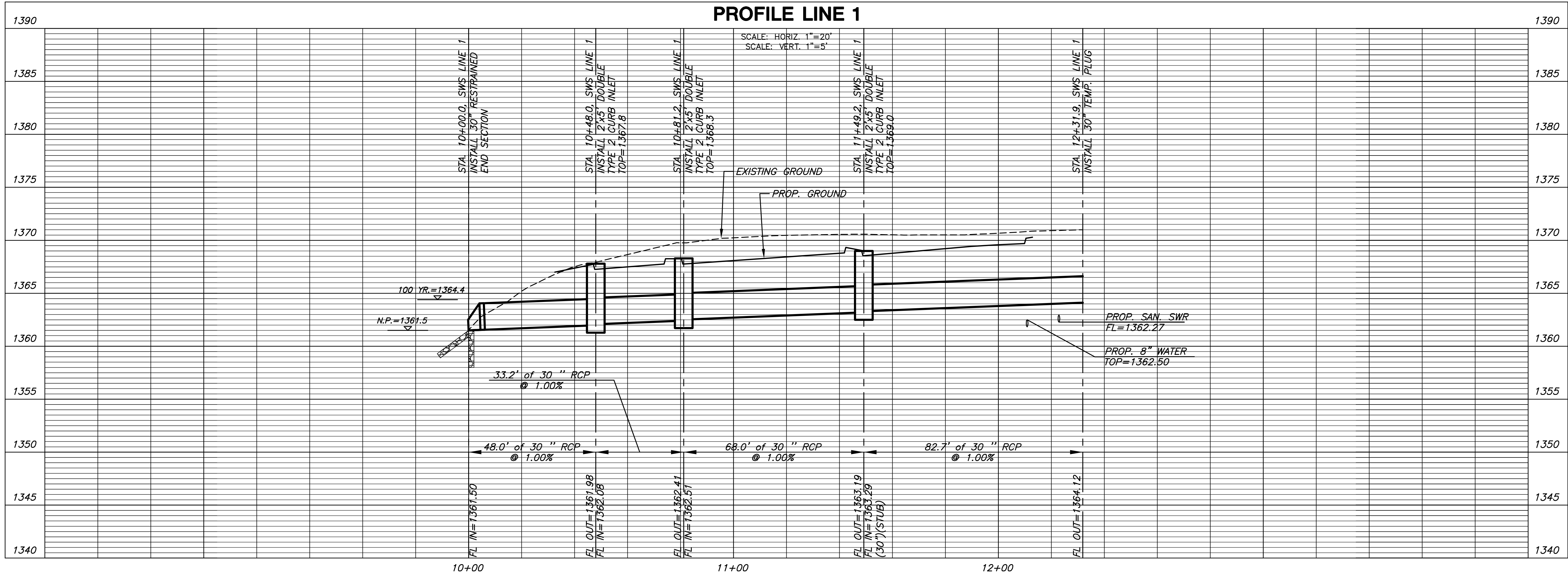
ISSUED
November 2012
REVISED
AS-BUILTS

SHEET NO.
1 of 8



NOTE:
RIP RAP SHALL BE INSTALLED ACCORDING TO STANDARD SPECIFICATIONS WITH TOE WALLS ON ALL UNPROTECTED EDGES. THE TOE WALL SHOWN ON THE PLANS SHALL BE IN ADDITION TO THE STANDARD SPECIFICATIONS.

**PLAN LINE 1
PROFILE LINE 1**



**STORM WATER SEWER PLAN FOR
HOLIDAY INN EXPRESS & SUITES
2340 N. GREENWICH ROAD, WICHITA, KS**

**SWS
LINE 1**

SHEET TITLE
0139PPD
PROJECT NUMBER

SPE / **BKS** / **AJK**
DESIGNED / DRAWN / CHECKED

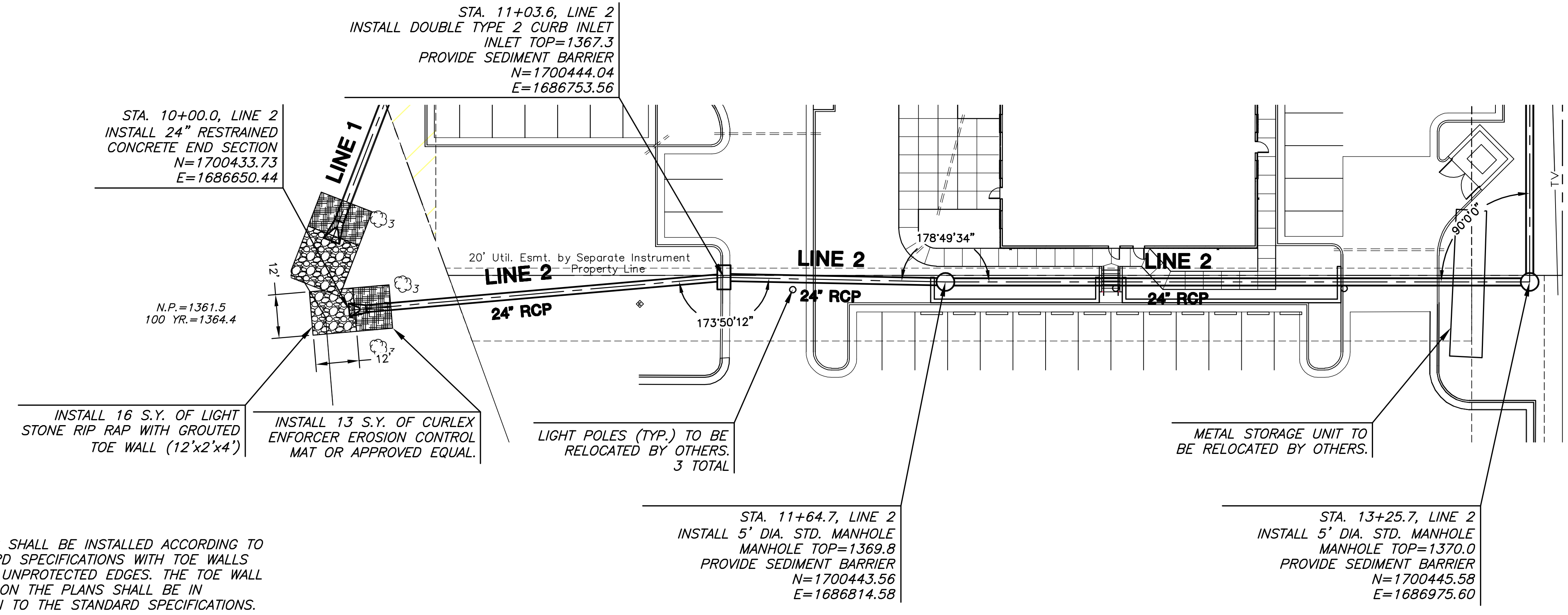
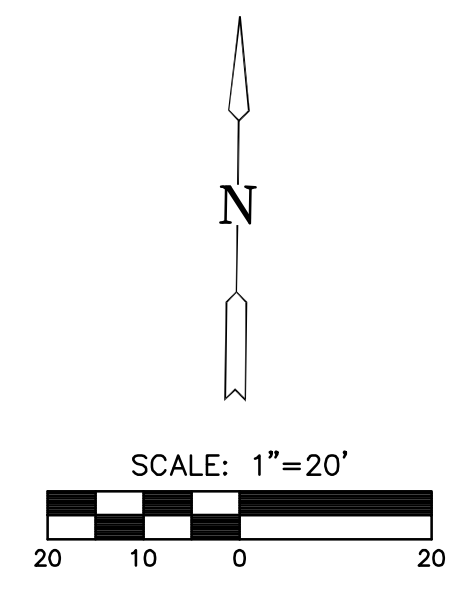
ISSUED
November 2012

REVISED
AS-BUILTS

SHEET NO.
5 of 8

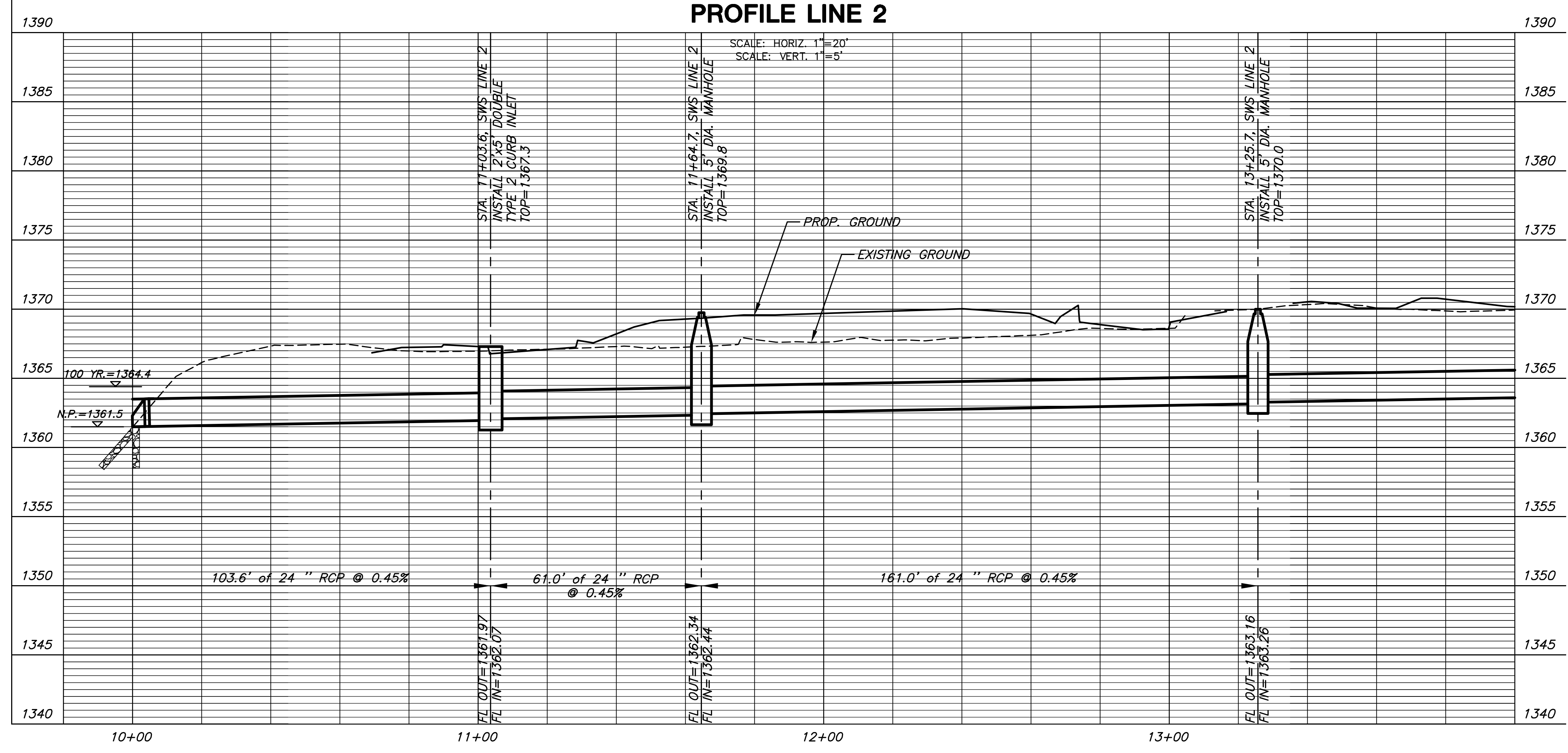
AS-BUILT PLANS - JUNE 2013

INSPECTED BY: GENE RATH, MKEC ENGINEERING CONSULTANTS, INC.
CONSTRUCTED BY: DANCO
SUPERINTENDENT: ROBERT GLASSE
SUPPLIER: WICHITA CONCRETE PIPE



NOTE:
RIP RAP SHALL BE INSTALLED ACCORDING TO STANDARD SPECIFICATIONS WITH TOE WALLS ON ALL UNPROTECTED EDGES. THE TOE WALL SHOWN ON THE PLANS SHALL BE IN ADDITION TO THE STANDARD SPECIFICATIONS.

**PLAN LINE 2
PROFILE LINE 2**



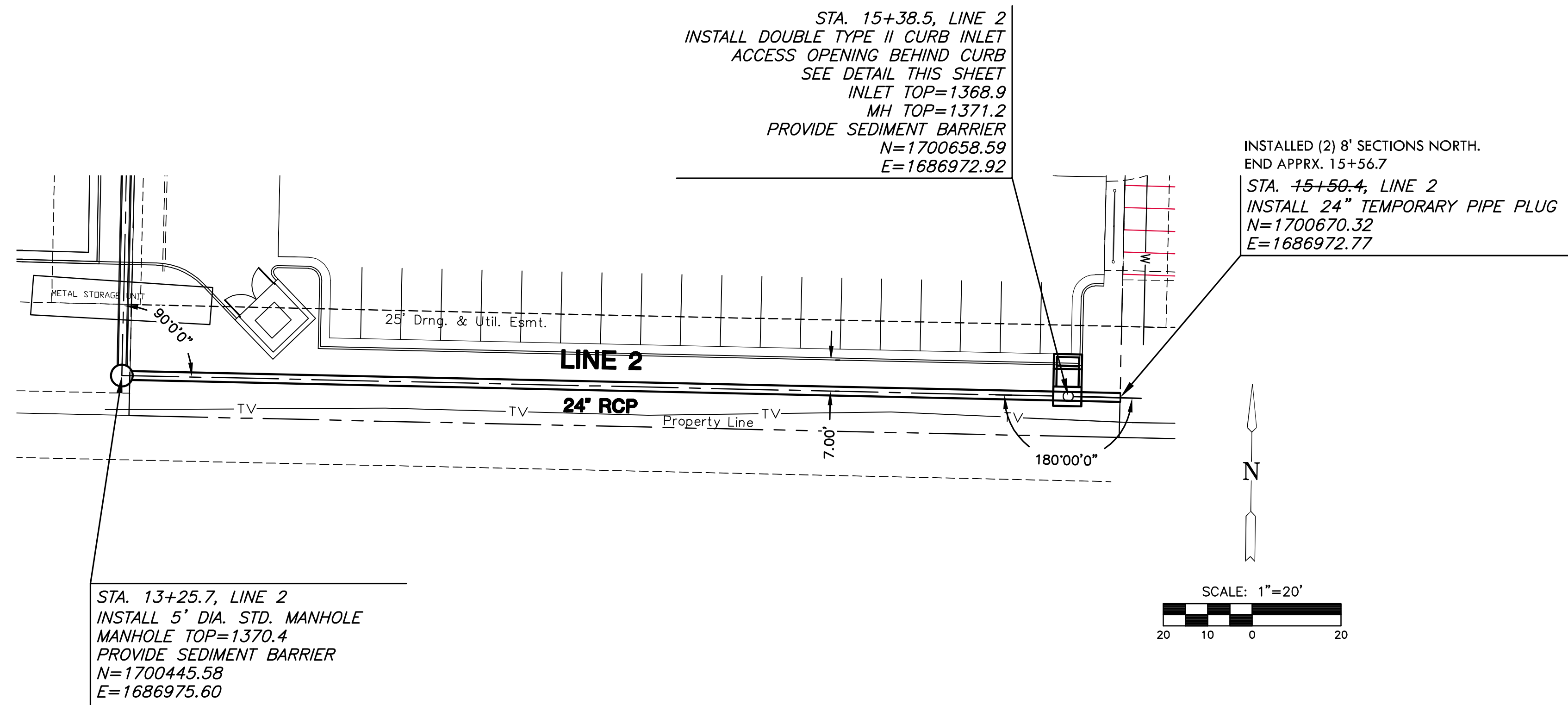
**STORM WATER SEWER PLAN FOR
HOLIDAY INN EXPRESS & SUITES
2340 N. GREENWICH ROAD, WICHITA, KS**

**SWS
LINE 2**
SHEET TITLE
0139PPD
PROJECT NUMBER

SPE | BKS | A/JK
DESIGNED | DRAWN | CHECKED

ISSUED
November 2012
REVISED
AS-BUILTS

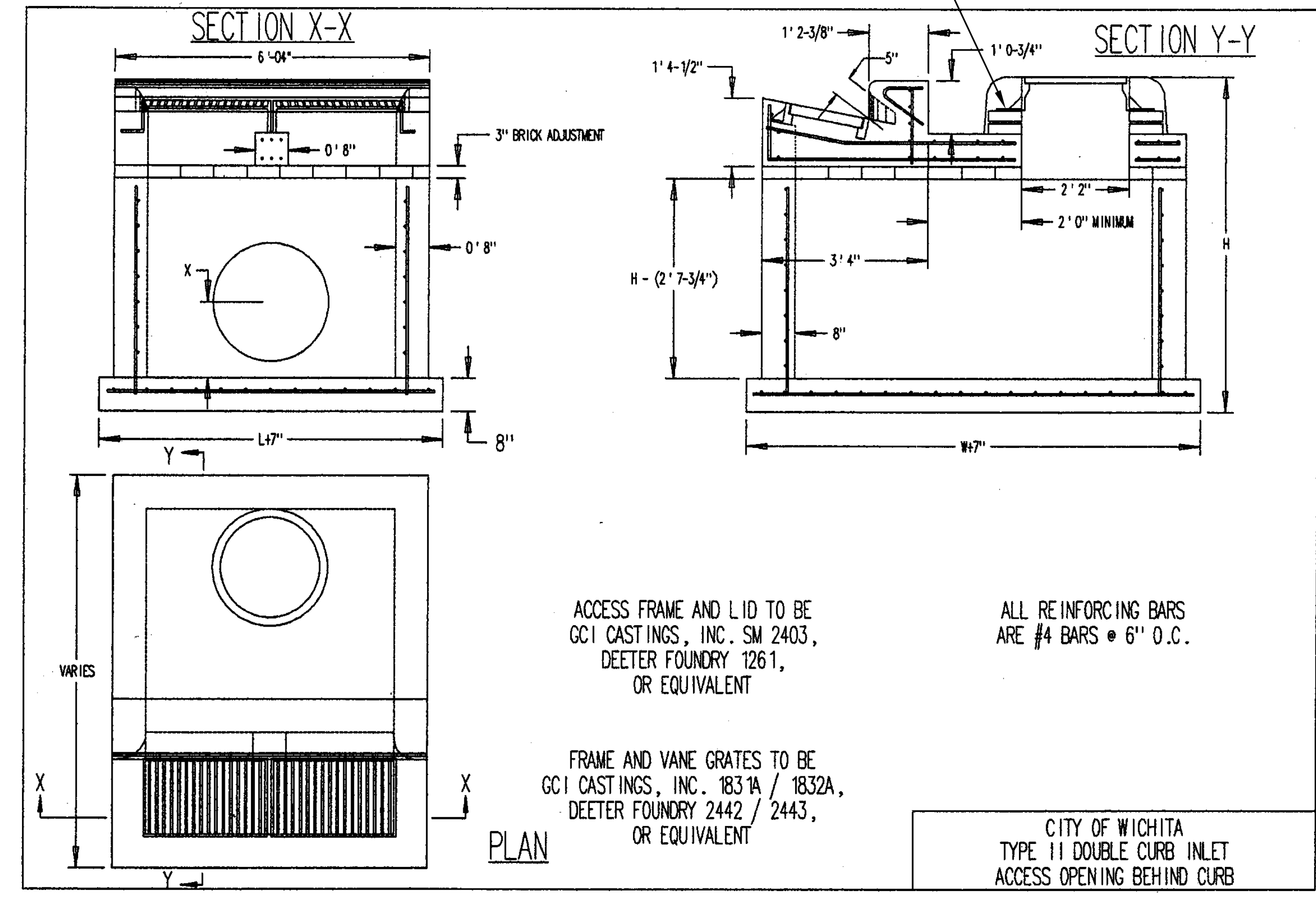
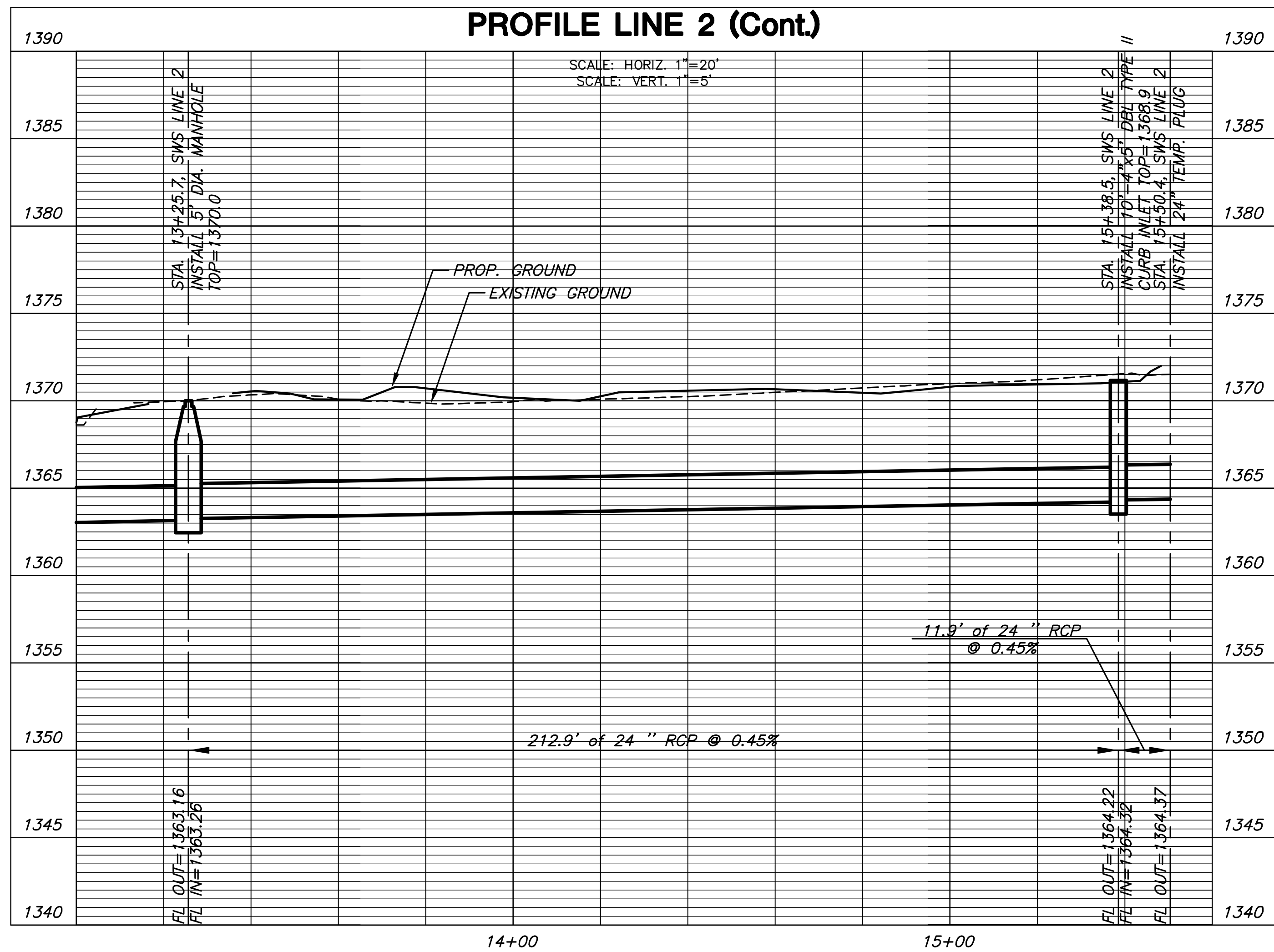
SHEET NO.
6 of 8



AS-BUILT PLANS - JUNE 2013

INSPECTED BY: GENE RATH, MKEC ENGINEERING CONSULTANTS, INC
CONSTRUCTED BY: DANCO
SUPERINTENDENT: ROBERT GLASSE
SUPPLIER: WICHITA CONCRETE PIPE

**PLAN LINE 2 (Cont.)
PROFILE LINE 2 (Cont.)**



**STORM WATER SEWER PLAN FOR
HOLIDAY INN EXPRESS & SUITES
2340 N. GREENWICH ROAD, WICHITA, KS**

**SWS
LINE 2**
SHEET TITLE
0139PPD
PROJECT NUMBER

SPE / BKS / AJK
DESIGNED DRAWN CHECKED

ISSUED
November 2012
REVISED
AS-BUILTS

SHEET NO.
7 of 8