

**GENERAL NOTES**

- ALL WATER MAINS AND APPURTENANCES SHALL BE INSTALLED IN ACCORDANCE WITH CITY OF WICHITA, KANSAS STANDARD SPECIFICATIONS FOR WATER MAIN INSTALLATIONS.
- CONTRACTOR WILL BE REQUIRED TO PROVIDE A MINIMUM ADVANCE NOTICE OF SEVENTY-TWO (72) HOURS TO UTILITY COMPANIES PRIOR TO STARTING ANY EXCAVATION AS FOLLOWS:  
  
KANSAS ONE-CALL 1-800-344-7233  
OR LOCAL (WICHITA) 687-2470  
  
THE CONTRACTOR MUST NOTIFY THE FOLLOWING IN CASE OF EMERGENCY:  
  
COX COMMUNICATIONS (CABLE) 262-0661  
WESTAR (ELECTRIC) 383-8600  
KANSAS GAS SERVICE (GAS) 832-3101  
SBC (TELEPHONE) 800-870-8390  
CITY OF WICHITA WATER & SEWER 262-6000  
BLACK HILLS ENERGY (GAS) 800-303-0357
- THE WATER MAIN SHALL BE CONSTRUCTED ON THE ALIGNMENT SHOWN ON THE PLANS. TREES AND SHRUBS IN PUBLIC RIGHT OF WAY WHICH ARE IN DIRECT CONFLICT WITH PROPOSED NEW CONSTRUCTION SHALL BE REMOVED BY THE CONTRACTOR WITH THE ENGINEER'S APPROVAL, AND SHALL BE INCLUDED IN THE PRICE BID FOR THE INSTALLED WATER PIPE. TREES AND SHRUBS WHICH ARE NOT IN DIRECT CONFLICT WITH PROPOSED CONSTRUCTION SHALL BE SAVED AND PROTECTED FROM DAMAGE.
- OPENING AND CLOSING WATER VALVES SHALL BE DONE SLOWLY TO PREVENT DAMAGE TO THE WATER DISTRIBUTION SYSTEM FROM WATER HAMMER. ALL VALVES CLOSED BY THE CONTRACTOR MUST BE REOPENED AS NEW CONSTRUCTION PERMITS. PROJECT INSPECTOR MUST ASCERTAIN THAT ANY VALVE CLOSED BY THE CONTRACTOR IS REOPENED. CONTRACTOR WILL BE PERMITTED TO OPERATE WATER VALVES ONLY WHEN THE PROJECT INSPECTOR ASSIGNED TO THE PROJECT IS PRESENT.
- CONTRACTOR SHALL NOT START WORK ON THE PROJECT UNTIL THE PROJECT INSPECTOR IS ASSIGNED TO THE PROJECT AND IS PRESENT ON THE SITE. ANY WORK DONE WITHOUT INSPECTION WILL BE REQUIRED TO BE UNCOVERED FOR INSPECTION.
- UNDERGROUND UTILITY SERVICE LINES AND OVERHEAD UTILITY POLE LINES ARE TO BE ADJUSTED AS NECESSARY BY OTHERS PRIOR TO CONSTRUCTION UNLESS THE PLANS SPECIFICALLY CALL FOR THEIR ADJUSTMENT BY THE CONTRACTOR. EXISTING UTILITIES AND THEIR LOCATION, AS SHOWN ON THE PLANS, REPRESENT THE BEST INFORMATION OBTAINABLE FOR DESIGN. LOCATION INFORMATION HAS BEEN OBTAINED FROM THE VARIOUS UTILITY COMPANIES AND IS EITHER FROM COMPANY RECORD DRAWINGS OR COMPANY PROVIDED FIELD LOCATIONS. THE CONTRACTOR WILL BE REQUIRED TO WORK AROUND EXISTING UTILITIES WITHIN THE RIGHT-OF-WAY WHICH DO NOT CONFLICT WITH PROPOSED CONSTRUCTION.
- THE CONTRACTOR SHALL GIVE ALL PROPERTY OWNERS AND/OR TENANTS OF DEVELOPED PROPERTY DIRECTLY ADJUTING CONSTRUCTION OF THIS PROJECT A MINIMUM OF TEN (10) DAYS NOTICE PRIOR TO START OF CONSTRUCTION.
- THE CONTRACTOR SHALL BE RESPONSIBLE FOR PRESERVING PROPERTY IRONS. THE CONTRACTOR WILL BE REQUIRED TO RE-ESTABLISH ANY PROPERTY IRONS WHICH ARE DAMAGED OR DESTROYED BY HIS CONSTRUCTION OPERATIONS. SUCH IRONS SHALL BE RE-ESTABLISHED BY A LICENSED LAND SURVEYOR IN ACCORDANCE WITH STATE LAWS. ALL COSTS FOR THIS WORK SHALL BE SUBSIDIARY TO SITE RESTORATION.
- THE CONTRACTOR SHALL RESTORE ALL DITCHES, SWALES, ROAD SHOULDERS, ENTRANCES AND BANK LINES TO THEIR ORIGINAL SLOPES AND GRADES EXCEPT AS SHOWN OTHERWISE.
- NO SERVICES WILL BE INSTALLED AS PART OF THIS PROJECT.
- INTERURBAN TRAFFIC GENERATED OUTSIDE THE PROJECT AREA, AND LOCAL BUSINESS OR RESIDENTIAL TRAFFIC GENERATED WITHIN THE PROJECT AREA ARE TO BE CARRIED THROUGH CONSTRUCTION AS FURTHER PROMULGATED BY PROJECT SPECIAL PROVISIONS.
- RUBBLE FROM THE REMOVAL OF MISCELLANEOUS STRUCTURES INCLUDING ANY TREES REMOVED AND TREE TRIMMINGS SHALL BE DISPOSED OF ON SITES TO BE PROVIDED BY THE CONTRACTOR. THESE SITES SHALL BE APPROVED BY THE ENGINEER AS TO SUITABILITY, APPEARANCE AND SITE LOCATION. LOCATIONS THAT, IN THE OPINION OF THE ENGINEER, WILL LEAVE AN UNSIGHTLY APPEARANCE WILL NOT BE APPROVED. ALL DISPOSAL SITES MUST BE APPROVED BY THE KANSAS DEPARTMENT OF HEALTH AND ENVIRONMENT. MATERIAL EITHER STOCKPILED OR DISPOSED OF IN A FLOOD PLAIN WOULD REQUIRE A KANSAS STATE BOARD OF AGRICULTURE PERMIT. ANY MATERIAL DUMPED IN WATERS OF THE UNITED STATES OR WETLANDS IS SUBJECT TO U.S. CORPS OF ENGINEERS PERMITTING REGULATIONS. ANY MATERIAL BURIED OR STOCKPILED BEYOND APPROVED CONSTRUCTION LIMITS WOULD REQUIRE ADDITIONAL ARCHAEOLOGICAL INVESTIGATIONS UNLESS BURIED IN A PREVIOUSLY APPROVED BORROW LOCATION.
- ALL DISTURBED AREAS TO BE SEEDED WITH RYE GRASS AT A RATE OF 200 LBS. PER ACRE WITHIN 10 DAYS OF CONSTRUCTION. CONTRACTOR TO PREPARE GRADE PER CITY SPECIFICATIONS. COST IS SUBSIDIARY TO SITE PREPARATION AND RESTORATION.
- THE CONTRACTOR SHALL LAY A TRACER WIRE & SET TEST STATIONS ALONG ALL WATER LINE PIPE INSTALLED W/N PUBLIC RIGHT-OF-WAY OR EASEMENTS IN ACCORDANCE WITH CITY OF WICHITA SPECIFICATIONS & TRACER WIRE DETAIL ON DETAIL SHEET. COST IS SUBSIDIARY TO PIPE INSTALLATION.
- CONTRACTOR TO COORDINATE CONSTRUCTION OF WATERLINE WITH OTHER CONSTRUCTION ACTIVITIES ON SITE.
- WORK DONE UNDER THIS PROJECT IS SUBJECT TO THE CITY OF WICHITA REQUIREMENTS FOR "CONSTRUCTION OF INFRASTRUCTURE IMPROVEMENTS BY PRIVATE CONTRACT." THE CONTRACTOR SHALL BE FAMILIAR AND COMPLY WITH ALL OF THE REQUIREMENTS, INCLUDING BONDING, INSPECTION, TESTING, NOTIFICATION, PROVIDING AS-BUILT DRAWINGS, PAYING FOR ALL NECESSARY CONNECTIONS AND/OR STREET REPAIR FEES AND PROVIDING PIPE MATERIAL AND OTHER CERTIFICATIONS.

**NOTE:**  
WATER LINE VALVES TO BE OPERATED BY CONTRACTOR ONLY IF WATER INSPECTOR IS ON SITE.

**PUBLIC WATER DISTRIBUTION SYSTEM IMPROVEMENTS**

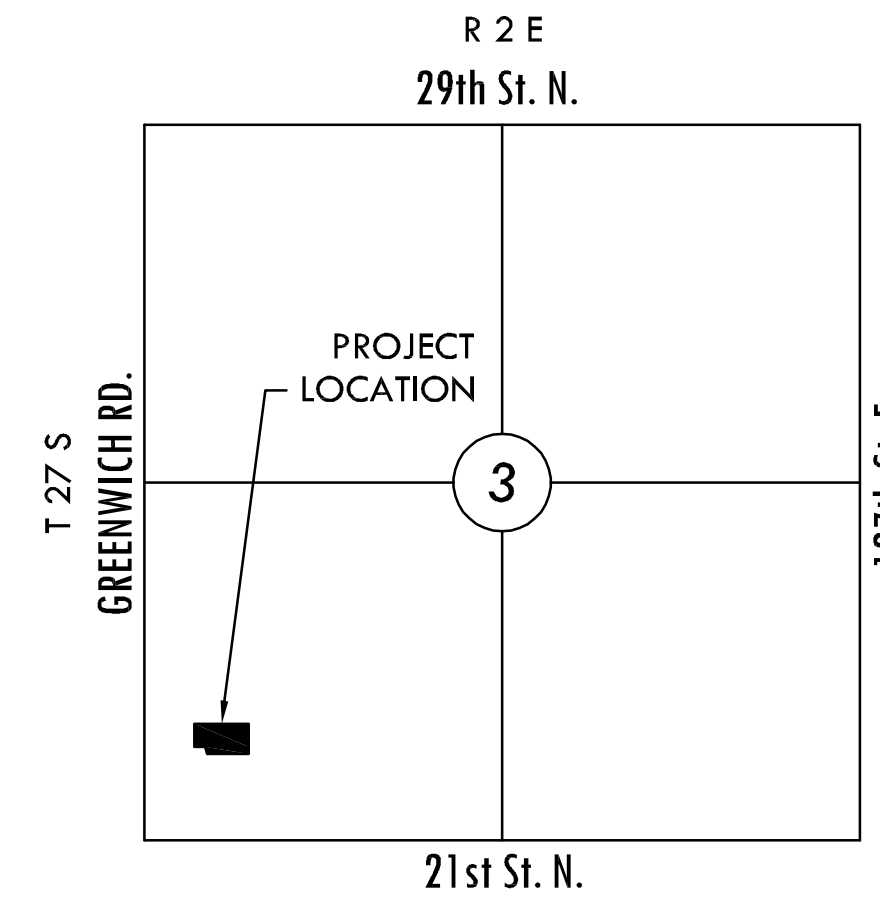
TO SERVE

**HOLIDAY INN EXPRESS & SUITES**

PROJECT NO. 1702PPW

THE CITY OF WICHITA, KANSAS  
GARY JANZEN, P.E. - CITY ENGINEER

OCA NO. 607853



**INDEX TO DRAWINGS**

SHEET NO.	DESCRIPTION
1	TITLE SHEET
2	WATER DETAILS
3	WATER LINE 1
4	WATER LINE 2 & F.P. LINE 1
5	PLAT

**APPROVED AS NOTED**  
BY CITY ENGINEER OF WICHITA,  
BY WICHITA WATER & SEWER DEPARTMENT,  
& BY WICHITA FIRE DEPARTMENT

Water Main (Public Works) *[Signature]* 12-4-12  
Water Main (Water & Sewer Dept.) *[Signature]* 12-4-12  
Fire Prot. Line (Fire Dept.) *[Signature]* 12-05-2012

**NOTE TO CONTRACTORS**

**Public Property:**  
Inspection and testing for the waterline is to be provided by a Licensed Consulting Engineering Firm under contract with the Owner/Developer. Said inspection to be in accordance with the City of Wichita Standard Construction Engineering Practices and certified by a Professional Engineer licensed in the state of Kansas. No work shall be performed in dedicated easements or public rights-of-way by the Contractor without such inspection, nor shall any work be commenced without written authorization by the City Engineer. All construction and materials shall comply with the City of Wichita Specifications and Standards (on file and available in the City Engineer's Office).

**Private Property:**  
Installation and testing for the fire protection line is to be performed by a City of Wichita Licensed Fire Protection Contractor in accordance with the fire codes as adopted by the City of Wichita. All materials and construction practices for the fire protection line shall comply with the fire codes as adopted by the City of Wichita (available from the City of Wichita Fire Department). The Contractor shall not commence work without notification to and approval of the Wichita Fire Department. Inspection of the fire protection line is to be provided by a licensed engineering firm under contract with the Owner/Developer and the Fire Department. The contractor shall not start work until the project inspector is assigned to the project and present on the site. Any work done without inspection will be required to be uncovered for inspection.

**LOT 15 LEGAL DESCRIPTION**

Lot 15, Block 1, Village at Greenwich Addition, an Addition to Wichita, Sedgwick County, Kansas.

**BENCHMARKS**

BM#1 - Chiseled square front center of curb inlet West side of Access Street 57.2 feet South and 44.6 feet West of the Northwest corner of Lot 15, Block 1, Village at Greenwich Addition. Elev. = 1369.81 NGVD 29

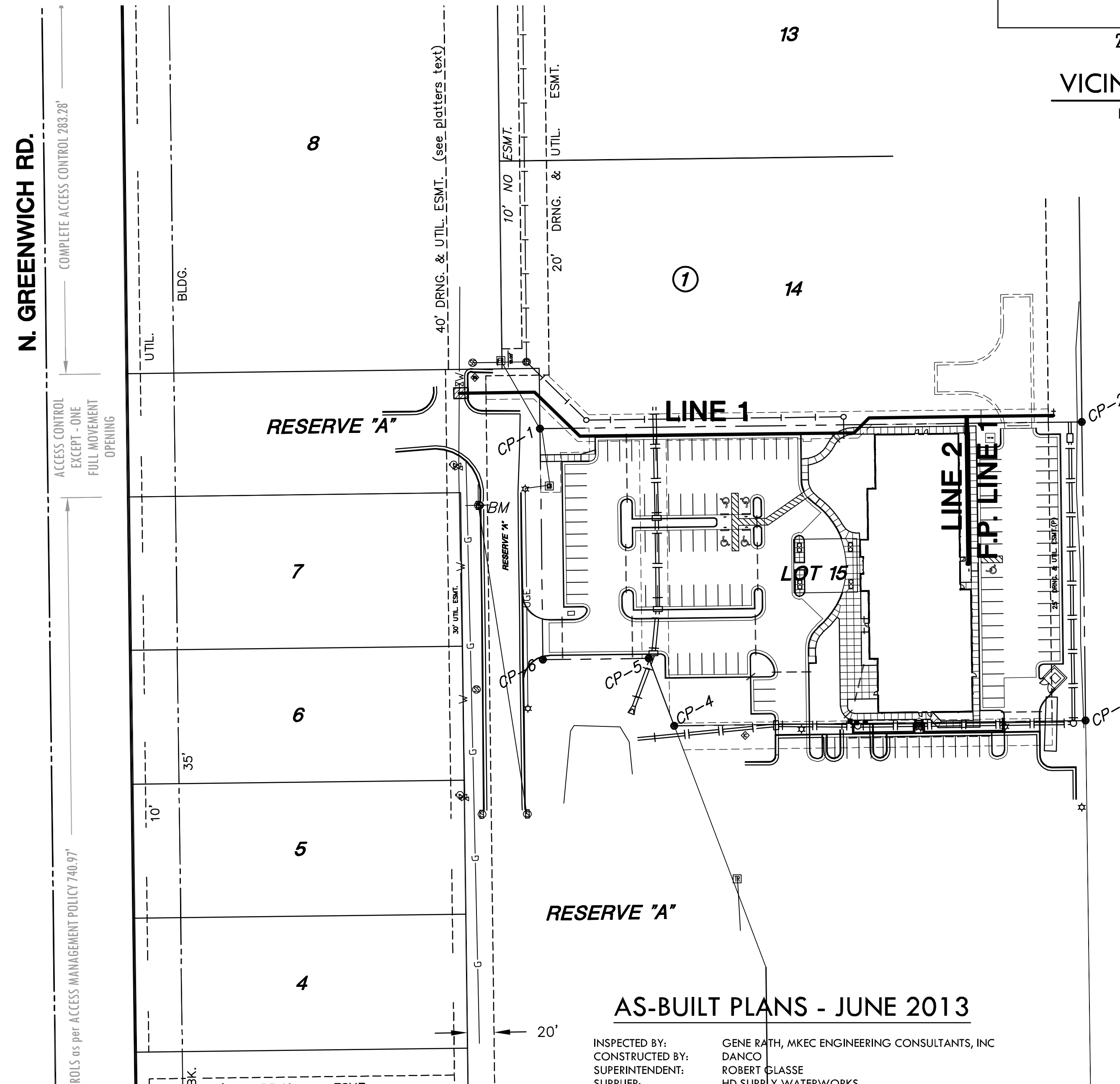
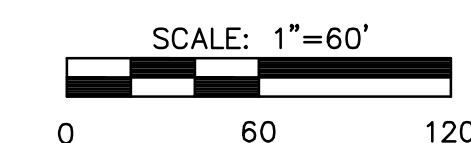
CONTROL POINTS			
POINT	NORTHING	EASTING	DESC.
CP-1	1700665.34	1686577.37	MKEC CP
CP-2	1700670.43	1686981.77	MKEC CP
CP-3	1700447.56	1686984.62	MKEC CP
CP-4	1700443.61	1686677.59	MKEC CP
CP-5	1700494.00	1686658.60	MKEC CP
CP-6	1700492.93	1686579.64	MKEC CP

**LEGEND**

— W — EXISTING WATER  
— — — PROPOSED WATER

**NOTE:** ALL LINES TO BE INSTALLED BY OTHERS ARE SUBJECT TO OCI REVIEW

**NOTE:** CONTRACTOR TO VERIFY DEPTH AND LOCATION OF EXISTING UTILITIES PRIOR TO CONSTRUCTION.

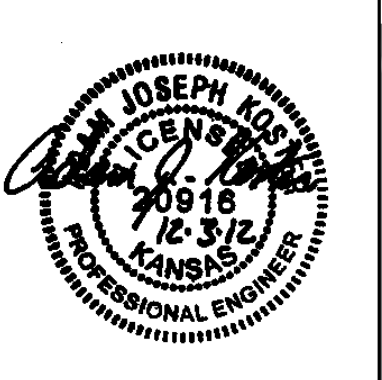


**AS-BUILT PLANS - JUNE 2013**

INSPECTED BY: GENE RATH, MKEC ENGINEERING CONSULTANTS, INC.  
CONSTRUCTED BY: DANCO  
SUPERINTENDENT: ROBERT GLASSE  
SUPPLIER: HD SUPPLY WATERWORKS  
  
8" C90 PVC: 460 L.F.  
8" 45° BEND: 4  
8" GATE VALVE: 2

**MKEC**  
ENGINEERING  
CONSULTANTS, INC.

411 N. WEBB ROAD  
WICHITA, K.S. 67206  
316-684-9600



WATER DISTRIBUTION PLANS FOR  
**HOLIDAY INN EXPRESS & SUITES**  
2340 N. GREENWICH ROAD, WICHITA, KS

**TITLE SHEET**

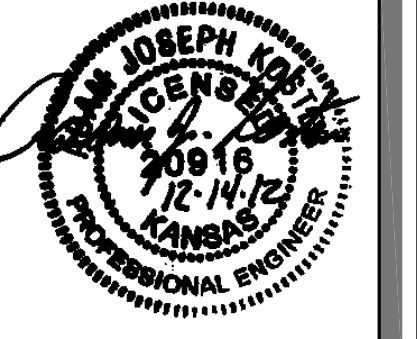
SHEET TITLE  
**1702PPW**  
PROJECT NUMBER

SPE | BKS | AJK  
DESIGNED | DRAWN | CHECKED

ISSUED  
**November 2012**

REVISED  
**AS-BUILTS**

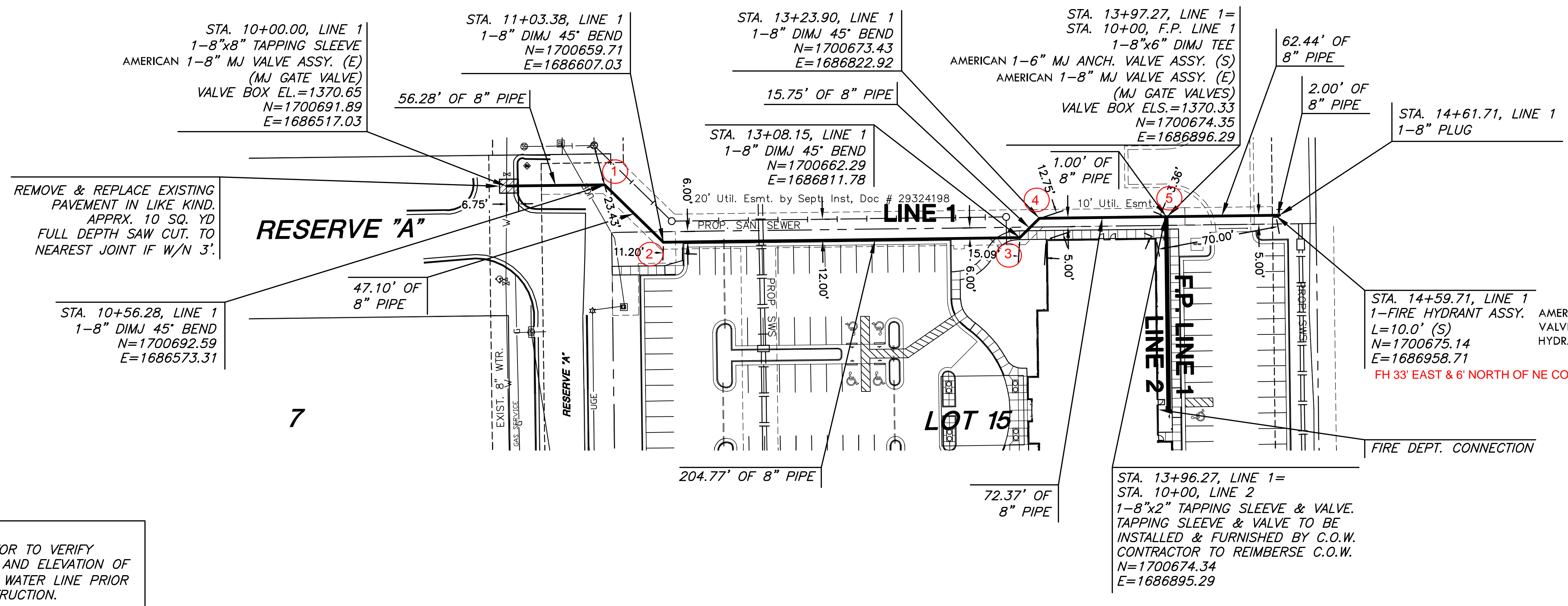
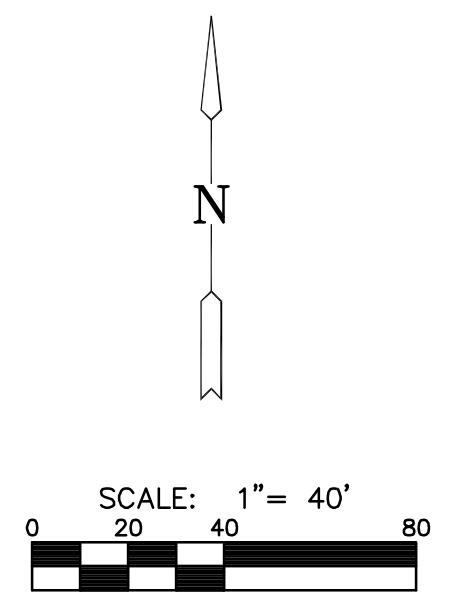
SHEET NO.  
**1 of 5**



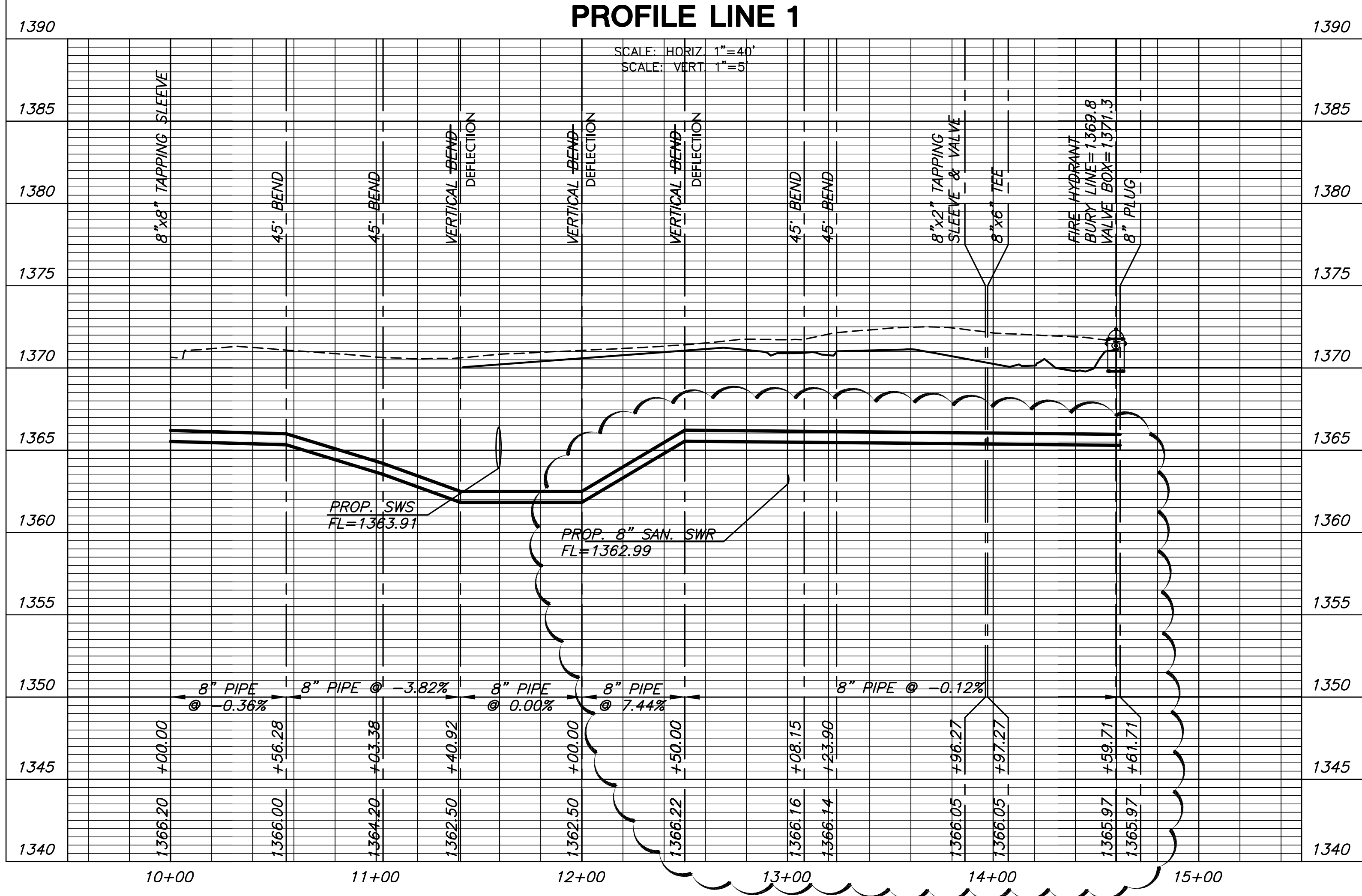
WATER DISTRIBUTION PLANS FOR  
**HOLIDAY INN EXPRESS & SUITES**  
2340 N. GREENWICH ROAD, WICHITA, KS

**AS-BUILT PLANS - JUNE 2013**

INSPECTED BY: GENE RATH, MKEC ENGINEERING CONSULTANTS, INC.  
CONSTRUCTED BY: DANCO  
SUPERINTENDENT: ROBERT GLASSE  
SUPPLIER: HD SUPPLY WATERWORKS



**PLAN LINE 1  
PROFILE LINE 1**



- ① 21' SOUTH & 5' EAST OF CENTER OF MH #6250-149
- ② 12' SOUTH & 5' WEST OF CENTER MH # 1-1, STA. 10+62.3 OF 2145PPS
- ③ 15' WEST & IN LINE OF NORTHWEST CORNER OF BUILDING
- ④ 12' NORTH & 4' WEST OF NORTHWEST CORNER OF BUILDING
- ⑤ 6' EAST & 12' NORTH OF NORTHWEST CORNER OF BUILDING

BUILDING: 2340 N. GREENWICH

**WATER LINE 1**  
SHEET TITLE  
1702PPW  
PROJECT NUMBER

SPE | BKS | AJK  
DESIGNED | DRAWN | CHECKED

ISSUED  
November 2012  
REVISED  
R1 12/14/12  
AS-BUILTS

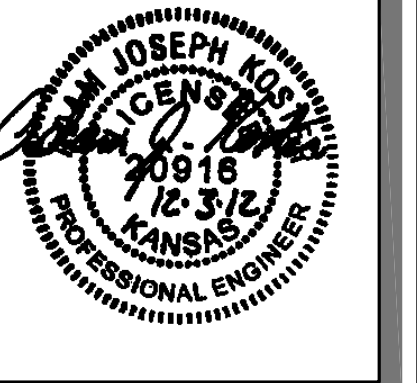
SHEET NO.  
3 of 5

AS-BUILT PLANS - JUNE 2013

INSPECTED BY: GENE RATH, MKEC ENGINEERING CONSULTANTS, INC.  
 CONSTRUCTED BY: DANCO  
 SUPERINTENDENT: ROBERT GLASSE  
 SUPPLIER: HD SUPPLY WATERWORKS

**MKEC**  
 ENGINEERING  
 CONSULTANTS, INC.

411 N. WEBB ROAD  
 WICHITA, K.S. 67206  
 316-684-9600



WATER DISTRIBUTION PLANS FOR  
**HOLIDAY INN EXPRESS & SUITES**  
 2340 N. GREENWICH ROAD, WICHITA, KS

**WATER LINE 2 & F.P. LINE 1**

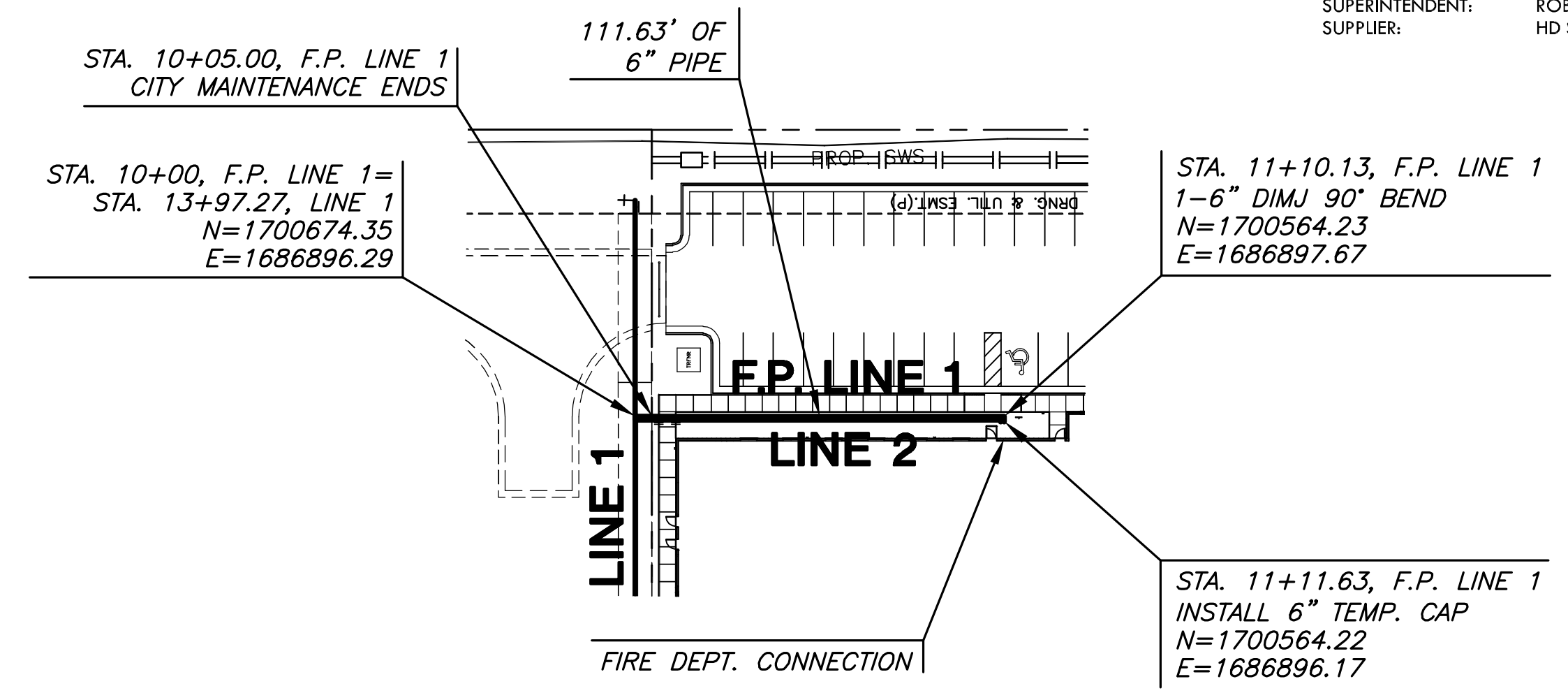
SHEET TITLE  
 1702PPW  
 PROJECT NUMBER

SPE | BKS | A/JK  
 DESIGNED | DRAWN | CHECKED

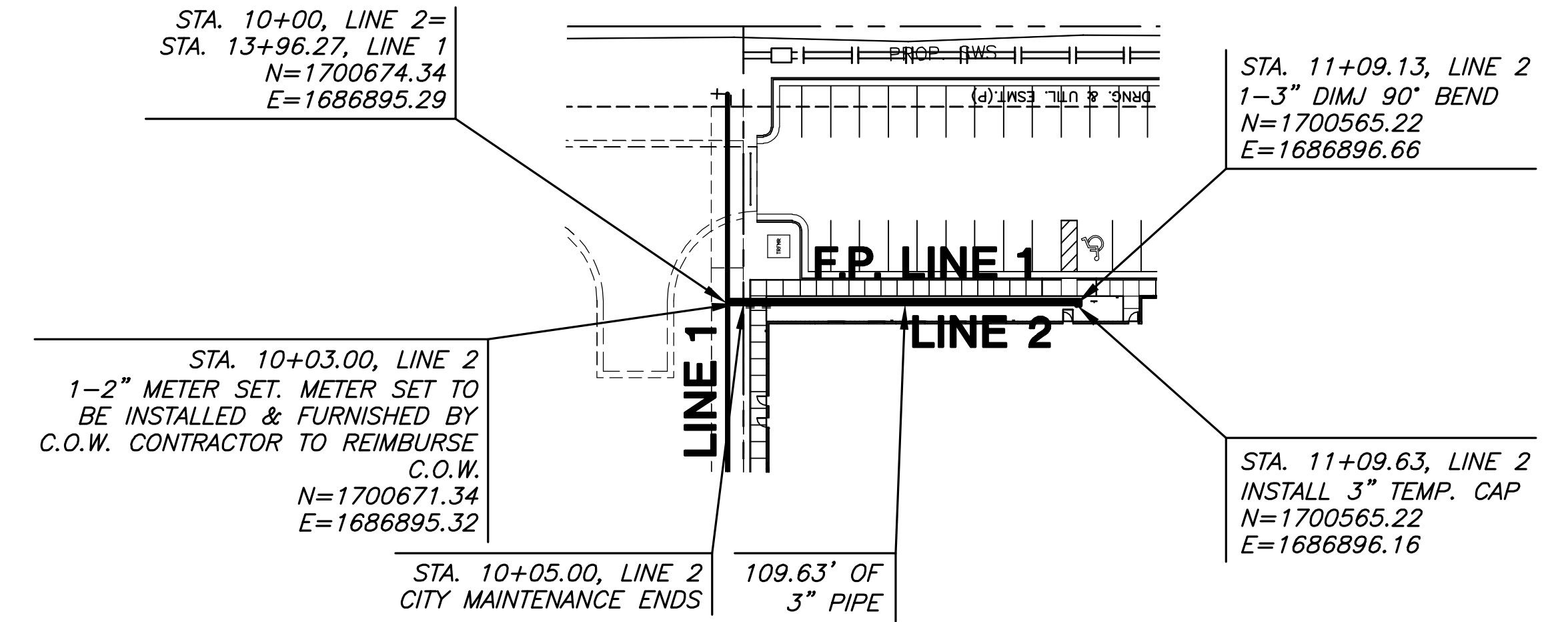
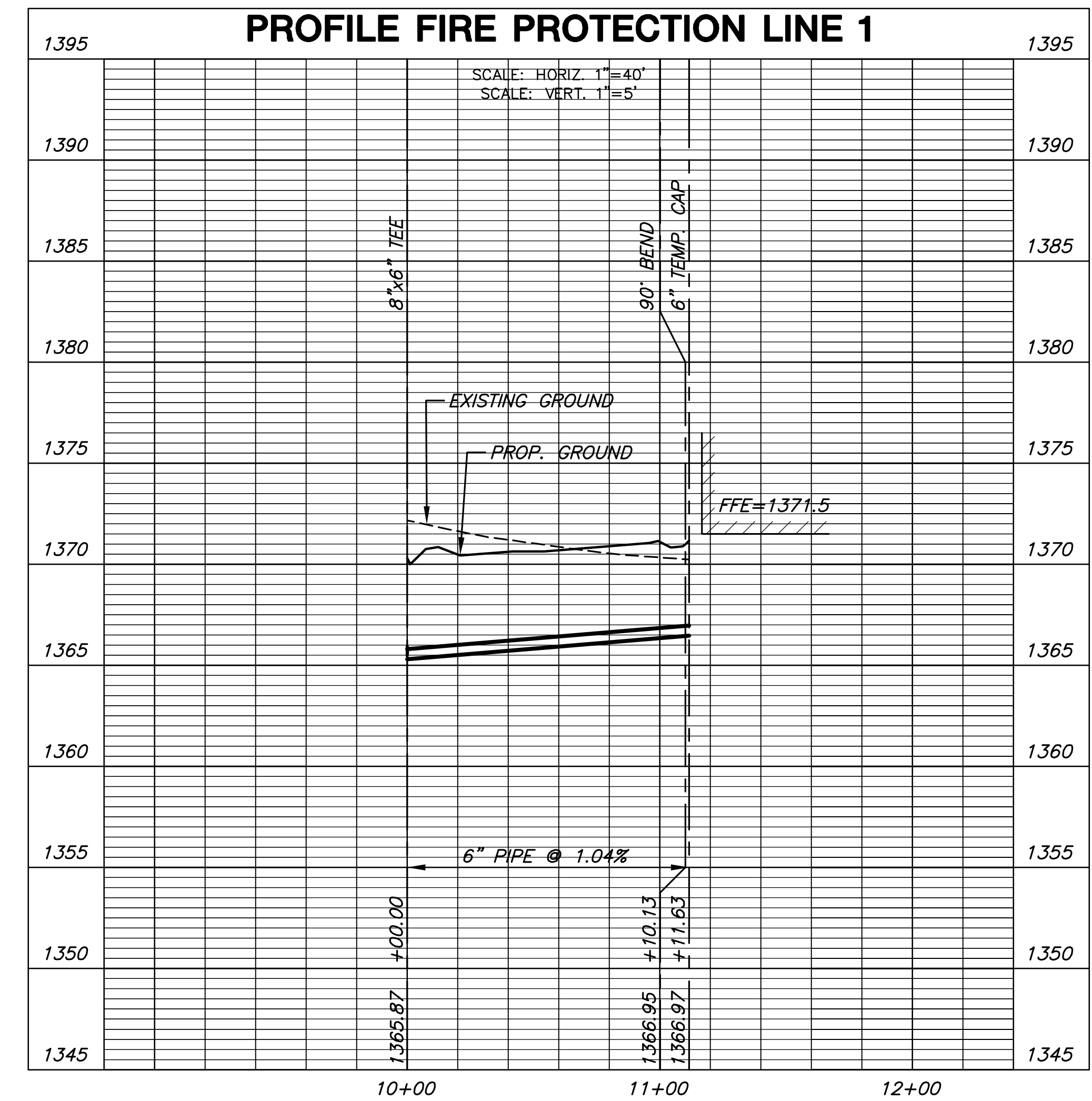
ISSUED  
 November 2012

REVISED  
 AS-BUILTS

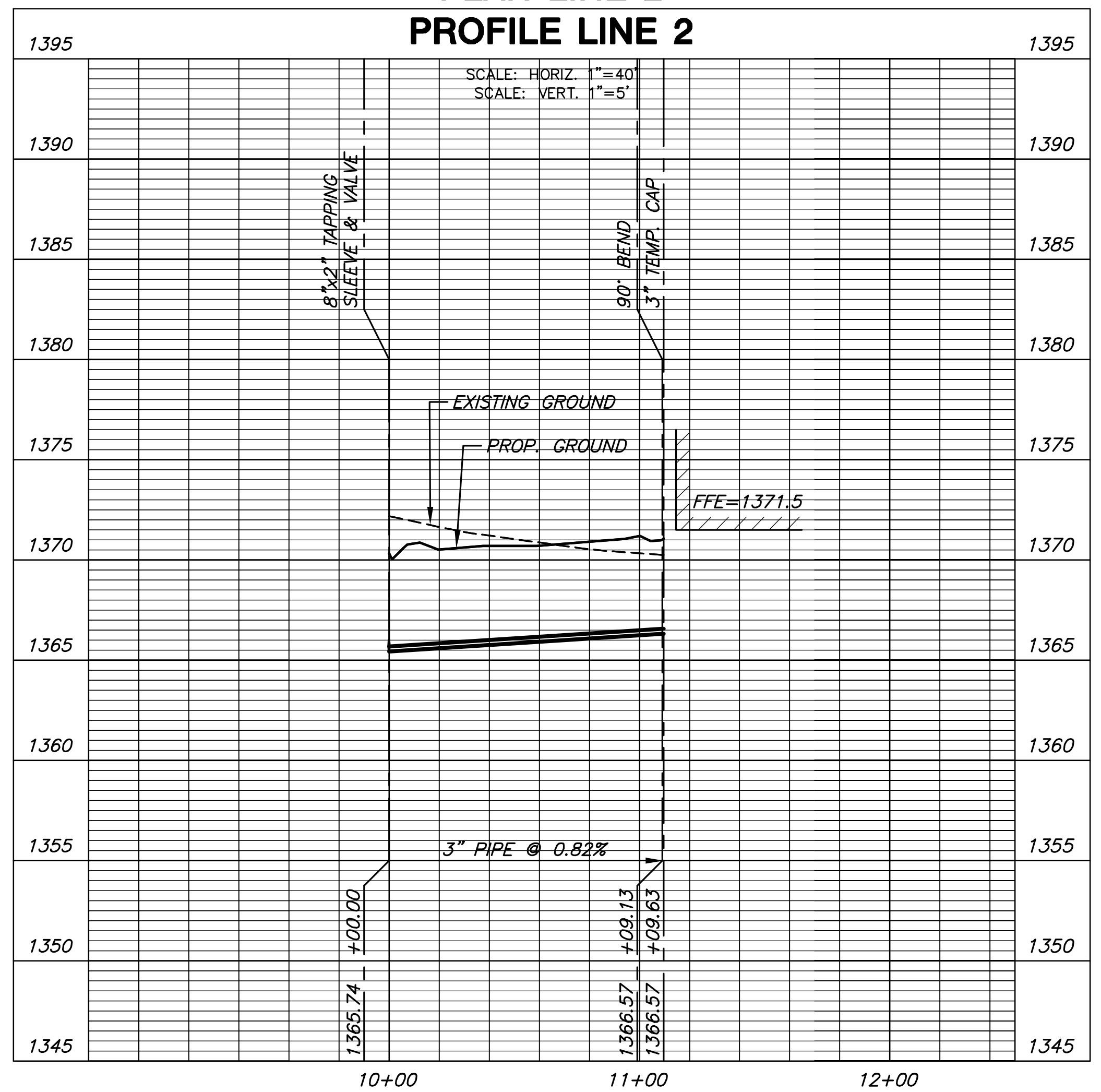
SHEET NO.  
 4 of 5



**PLAN FIRE PROTECTION LINE 1**  
**PROFILE FIRE PROTECTION LINE 1**



**PLAN LINE 2**  
**PROFILE LINE 2**



NOTE:  
 CONTRACTOR TO VERIFY  
 LOCATION AND ELEVATION OF  
 EXIST. 8" WATER LINE PRIOR  
 TO CONSTRUCTION.

PLOTTED: Friday, June 14, 2013 8:08:21 AM

K:\PROJECTS\2012\1201010591\_PUETZ-GREENWICH-WICHITA-HOLIDAY INN EXPRESS\5-CIVIL\CAO\WTR\120591\_WTR\_L2.DWG