

Clark Street

Market St.

Broadway Ave

Kinkaid Street

205 E. Clark

2105 S. Broadway

2138

2156

134'

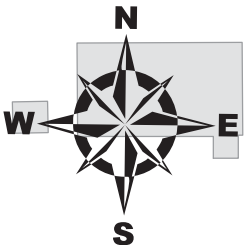
215'

Estimated 8 Service Reconnections (4")
Estimated 1 Service Reconnection (6")

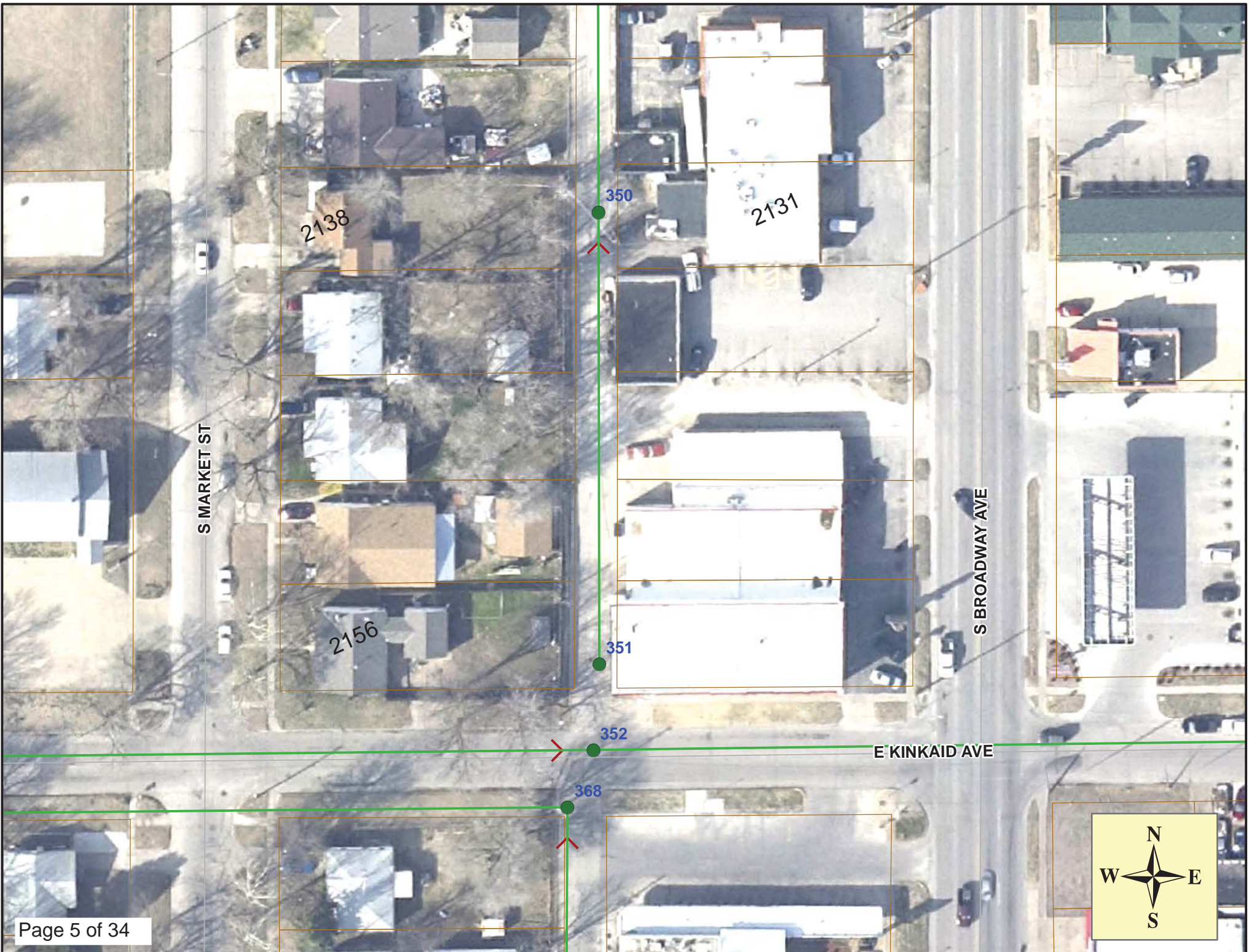
MH 5445-350
Remove and Replace MH Frame & Cover
Approx MH depth = 3.3 ft

Remove 215 lf of 8" Pipe
Install 215 lf of 8" Pipe
Remove & Replace approx
218 lf of Concrete Pavement
Install 215 lf of Fill Sand (flushed & vibrated)

MH 5445-351
Remove and Replace MH Frame & Cover
Approx MH depth = 2.8 ft



SITE 1



2138

2131

2156

350

351

352

368

S MARKET ST

S BROADWAY AVE

E KINKAID AVE





Video Inspection Master Report

4/16/2013

8:05 AM

US Structure: 5445-351 2100 S BROADWAY AVE ST Date Insp: 9/21/2010 Basin: C05D
 DS Structure: 5445-350 2122 S MARKET AVE ST Dir Televised: Upstream To Downstream

Pipe Information

Shape: Round Length Status: Project No. : D-150
 Dia/Ht: 8 Material: VCP Index:
 Length: 215.0 Slope: 0.102 Surface:

| Obs. # | VTR Counter | Distance | Location | Description | Rating | Obsrvd (gpm) | Ratings | | | Remain (gpm) |
|--------|-------------|----------|-----------------|------------------|--------|--------------|------------|--------|-------|--------------|
| | | | | | | | Est. (gpm) | Struct | Clean | |
| 1 | | 0.0 | | US Manhole | 1 | | 0.000 | 0 | 0 | 0.000 |
| 2 | | 0.0 | | Crack-Horizontal | 3 | | 0.004 | 5 | 0 | 0.004 |
| 3 | | 0.0 | Joint | Offset | 3 | | 0.010 | 20 | 0 | 0.010 |
| 4 | | 0.0 | | Broken Pipe | 4 | | 0.030 | 78 | 0 | 0.030 |
| | | 2.0 | 2171 S BROADWAY | Break-In Conn | 4 | | | | | |
| 6 | | 7.1 | 2171 S BROADWAY | Break-In Conn | 4 | | | | | |
| 7 | | 8.7 | Joint | Offset | 3 | | 0.010 | 20 | 0 | 0.010 |
| 8 | | 11.0 | Joint | Offset | 3 | | 0.010 | 20 | 0 | 0.010 |
| 9 | | 14.0 | | Crack-Radial | 2 | | 0.002 | 2 | 0 | 0.002 |
| 10 | | 16.2 | Joint | Offset | 3 | | 0.010 | 20 | 0 | 0.010 |
| 11 | | 18.7 | Joint | Offset | 3 | | 0.010 | 20 | 0 | 0.010 |
| 12 | | 23.3 | | Crack-Radial | 3 | | 0.004 | 5 | 0 | 0.004 |
| 13 | | 23.8 | Joint | Offset | 2 | | 0.000 | 0 | 0 | 0.000 |
| 14 | | 25.5 | | Wye Service | 1 | | 0.000 | 0 | 0 | 0.000 |
| 15 | | 26.6 | | Crack-Radial | 3 | | 0.004 | 5 | 0 | 0.004 |
| 16 | | 27.5 | 2156 S MARKET | Wye Service | 3 | | 0.000 | 2 | 0 | 0.000 |
| 17 | | 29.4 | Joint | Offset | 2 | | 0.000 | 0 | 0 | 0.000 |
| 18 | | 29.4 | | Crack-Radial | 3 | | 0.004 | 5 | 0 | 0.004 |
| 19 | | 31.4 | Joint | Offset | 3 | | 0.010 | 20 | 0 | 0.010 |
| 20 | | 34.0 | Joint | Offset | 3 | | 0.010 | 20 | 0 | 0.010 |
| 21 | | 41.2 | Joint | Offset | 3 | | 0.010 | 20 | 0 | 0.010 |
| 22 | | 44.0 | Joint | Offset | 3 | | 0.010 | 20 | 0 | 0.010 |
| 23 | | 46.4 | Joint | Offset | 3 | | 0.010 | 20 | 0 | 0.010 |
| 24 | | 49.1 | Joint | Offset | 3 | | 0.010 | 20 | 0 | 0.010 |
| 25 | | 49.4 | | Crack-Radial | 3 | | 0.004 | 5 | 0 | 0.004 |
| 26 | | 50.9 | | Wye Service | 1 | | 0.000 | 0 | 0 | 0.000 |
| 27 | | 51.7 | Joint | Offset | 3 | | 0.010 | 20 | 0 | 0.010 |
| 28 | | 53.4 | 2152 S MARKET | Wye Service | 1 | | 0.000 | 0 | 0 | 0.000 |
| 29 | | 54.2 | Joint | Offset | 3 | | 0.010 | 20 | 0 | 0.010 |
| 30 | | 56.6 | Joint | Offset | 3 | | 0.010 | 20 | 0 | 0.010 |
| 31 | | 56.6 | | Crack-Radial | 3 | | 0.004 | 5 | 0 | 0.004 |
| 32 | | 59.0 | Joint | Offset | 3 | | 0.010 | 20 | 0 | 0.010 |
| 33 | | 61.8 | Joint | Offset | 3 | | 0.010 | 20 | 0 | 0.010 |
| 34 | | 64.4 | | Crack-Radial | 3 | | 0.004 | 5 | 0 | 0.004 |
| 35 | | 66.7 | Joint | Offset | 3 | | 0.010 | 20 | 0 | 0.010 |
| 36 | | 66.9 | | Crack-Horizontal | 3 | | 0.004 | 5 | 0 | 0.004 |
| 37 | | 69.2 | Joint | Offset | 3 | | 0.010 | 20 | 0 | 0.010 |
| 38 | | 71.9 | | Crack-Radial | 3 | | 0.004 | 5 | 0 | 0.004 |

Video Inspection Master Report

4/16/2013

8:05 AM

| US Structure: | 5445-351 | 2100 S BROADWAY AVE ST | Date Insp: | 9/21/2010 | Basin: | C05D |
|---------------|----------|------------------------------|------------------------|------------------------|--------|-------------|
| DS Structure: | 5445-350 | 2122 S MARKET AVE ST | Dir Televised: | Upstream To Downstream | | |
| 39 | 72.7 | | Begin Sag | 3 | 0.000 | 5 0 0.000 |
| 40 | 74.5 | | Camera Submerged / Sag | 1 | 0.000 | 1 0 0.000 |
| 41 | 74.5 | | Crack-Radial | 3 | 0.004 | 5 0 0.004 |
| 42 | 75.9 | 2171 S BROADWAY / IN THE SAG | Wye Service | 4 | 0.000 | 60 0 0.000 |
| 43 | 76.8 | | Crack-Radial | 3 | 0.004 | 5 0 0.004 |
| 44 | 78.6 | | Wye Service | 2 | 0.000 | 0 0 0.000 |
| 45 | 79.7 | | Sag ends | 3 | 0.000 | 5 0 0.000 |
| 46 | 80.1 | | Crack-Radial | 3 | 0.004 | 5 0 0.004 |
| 48 | 89.4 | Joint | Offset | 3 | 0.010 | 20 0 0.010 |
| 49 | 92.2 | | Sag | 3 | 0.000 | 5 0 0.000 |
| 50 | 95.8 | 2165 S BROADWAY | Break-In Conn | 2 | 0.002 | 0 0 0.002 |
| 51 | 100.8 | 2146 S MARKET | Wye Service | 3 | 0.000 | 2 0 0.000 |
| 52 | 102.3 | Joint | Offset | 3 | 0.010 | 20 0 0.010 |
| 53 | 104.6 | Joint | Offset | 3 | 0.010 | 20 0 0.010 |
| 54 | 107.3 | Joint | Offset | 2 | 0.000 | 0 0 0.000 |
| 55 | 107.3 | | Crack-Radial | 3 | 0.004 | 5 0 0.004 |
| 56 | 112.1 | Joint | Offset | 4 | 0.030 | 60 0 0.030 |
| 57 | 112.5 | | Broken Pipe | 4 | 0.030 | 78 0 0.030 |
| 58 | 113.9 | | Wye Service | 1 | 0.000 | 0 0 0.000 |
| 59 | 114.7 | | Sag | 5 | 0.000 | 25 0 0.000 |
| 60 | 119.7 | | Sag | 1 | 0.000 | 1 0 0.000 |
| 61 | 119.7 | Joint | Offset | 3 | 0.010 | 20 0 0.010 |
| 62 | 122.4 | Joint | Offset | 3 | 0.010 | 20 0 0.010 |
| 63 | 122.7 | | Broken Pipe | 5 | 0.060 | 100 0 0.060 |
| 64 | 124.8 | Joint | Offset | 3 | 0.010 | 20 0 0.010 |
| 65 | 126.4 | | Wye Service | 1 | 0.000 | 0 0 0.000 |
| 66 | 127.4 | | Sag | 4 | 0.000 | 10 0 0.000 |
| 67 | 132.3 | Joint | Offset | 3 | 0.010 | 20 0 0.010 |
| 68 | 133.6 | | Sag | 1 | 0.000 | 1 0 0.000 |
| 69 | 138.6 | | Sag | 3 | 0.000 | 5 0 0.000 |
| 70 | 139.8 | | Sag Begins | 1 | 0.000 | 1 0 0.000 |
| 71 | 139.8 | Joint | Offset | 3 | 0.010 | 20 0 0.010 |
| 72 | 142.1 | 2149 S BROADWAY | Break-In Conn | 2 | 0.002 | 0 0 0.002 |
| 73 | 145.0 | Joint | Offset | 3 | 0.010 | 20 0 0.010 |
| 74 | 148.6 | | Sag | 3 | 0.000 | 5 0 0.000 |
| 75 | 149.2 | | Sag | 1 | 0.000 | 1 0 0.000 |
| 76 | 150.1 | Joint | Offset | 3 | 0.010 | 20 0 0.010 |
| 77 | 152.1 | | Wye Service | 1 | 0.000 | 0 0 0.000 |
| 78 | 152.8 | Joint | Offset | 3 | 0.010 | 20 0 0.010 |
| 79 | 153.5 | | Sag | 3 | 0.000 | 5 0 0.000 |
| 80 | 154.0 | 2142 S MARKET / PVC | Break-In Conn | 2 | 0.002 | 0 0 0.002 |

Video Inspection Master Report

4/16/2013

8:05 AM

US Structure: 5445-351 2100 S BROADWAY AVE ST Date Insp: 9/21/2010 Basin: C05D
 DS Structure: 5445-350 2122 S MARKET AVE ST Dir Televised: Upstream To Downstream

| | | | | | | | | |
|-----|-------|---------------|---------------|---|-------|----|---|-------|
| 81 | 157.0 | | Sag | 1 | 0.000 | 1 | 0 | 0.000 |
| 82 | 158.0 | | Sag | 3 | 0.000 | 5 | 0 | 0.000 |
| 83 | 158.3 | | Crack-Radial | 3 | 0.004 | 5 | 0 | 0.004 |
| 84 | 167.8 | Joint | Offset | 3 | 0.010 | 20 | 0 | 0.010 |
| 85 | 170.6 | | Sag | 1 | 0.000 | 1 | 0 | 0.000 |
| 86 | 170.6 | Joint | Offset | 3 | 0.010 | 20 | 0 | 0.010 |
| 87 | 173.1 | Joint | Offset | 3 | 0.010 | 20 | 0 | 0.010 |
| 88 | 175.7 | Joint | Offset | 3 | 0.010 | 20 | 0 | 0.010 |
| 89 | 177.4 | | Wye Service | 1 | 0.000 | 0 | 0 | 0.000 |
| 90 | 178.3 | | Crack-Radial | 2 | 0.002 | 2 | 0 | 0.002 |
| 91 | 180.0 | | Wye Service | 1 | 0.000 | 0 | 0 | 0.000 |
| 92 | 180.8 | Joint | Offset | 3 | 0.010 | 20 | 0 | 0.010 |
| 93 | 183.7 | | Crack-Radial | 2 | 0.002 | 2 | 0 | 0.002 |
| 94 | 184.6 | | Sag | 3 | 0.000 | 5 | 0 | 0.000 |
| 95 | 185.9 | | Sag | 1 | 0.000 | 1 | 0 | 0.000 |
| 96 | 188.5 | Joint | Offset | 3 | 0.010 | 20 | 0 | 0.010 |
| 97 | 193.4 | Joint | Offset | 2 | 0.000 | 0 | 0 | 0.000 |
| 98 | 195.8 | Joint | Offset | 3 | 0.010 | 20 | 0 | 0.010 |
| 99 | 202.7 | | Wye Service | 1 | 0.000 | 0 | 0 | 0.000 |
| 100 | 204.4 | 2138 S MARKET | Break-In Conn | 4 | 0.008 | 60 | 0 | 0.008 |
| 101 | 206.2 | | Crack-Radial | 2 | 0.002 | 2 | 0 | 0.002 |
| 102 | 208.6 | Joint | Offset | 2 | 0.000 | 0 | 0 | 0.000 |
| 103 | 211.0 | Joint | Offset | 3 | 0.010 | 20 | 0 | 0.010 |
| 104 | 215.3 | | DS Manhole | 4 | 0.000 | 0 | 0 | 0.000 |
| 105 | 95.4 | | Sag | 1 | 0.000 | 1 | 0 | 0.000 |
| 106 | 139.8 | Joint | Offset | 3 | 0.010 | 20 | 0 | 0.010 |

Line has poor grade. Some taps in poor condtion. -LML