

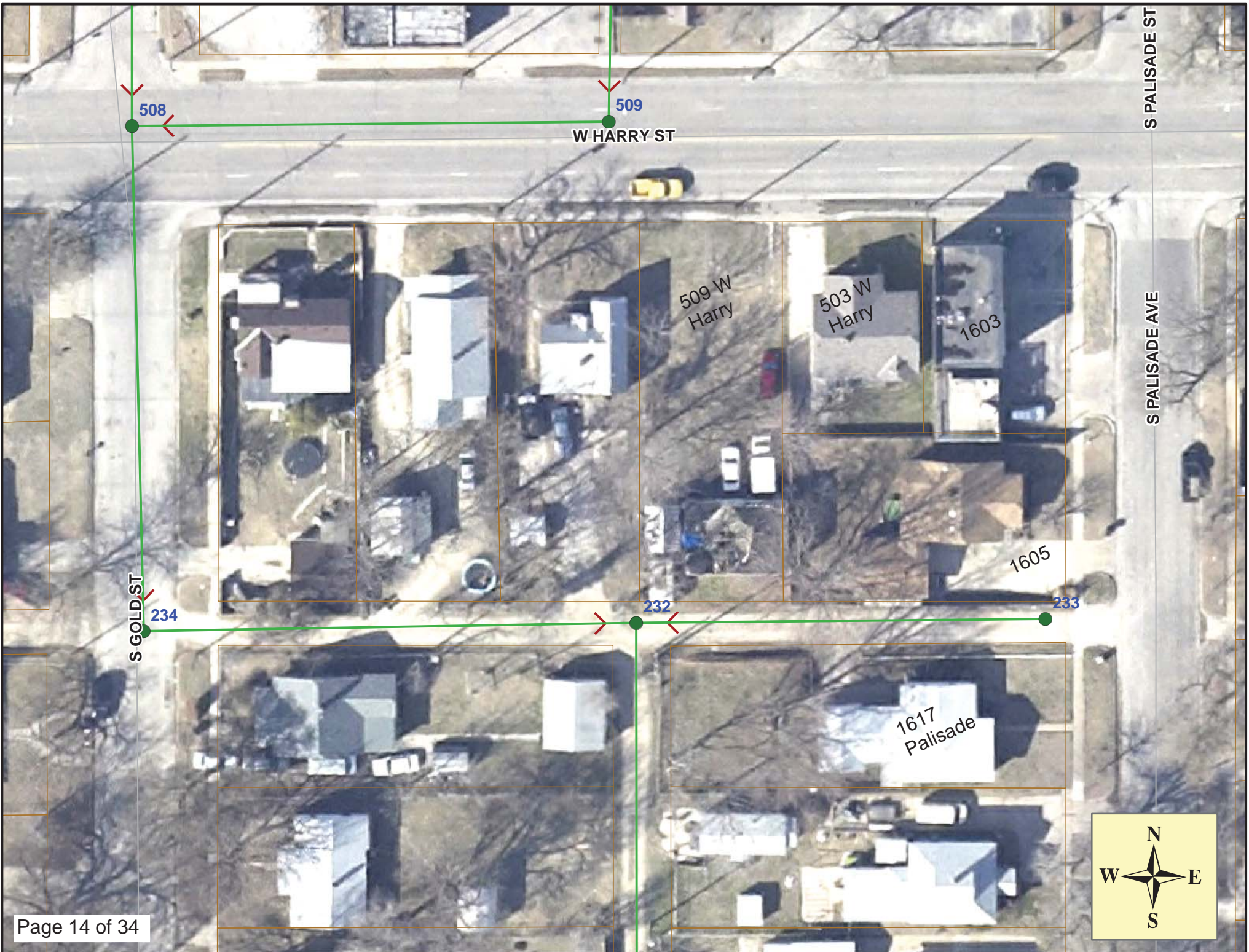
Remove 143 lf of 8" Pipe
Install 143 lf of 8" Pipe
Restoration of the alley shall be subsidiary to Site Restoration

MH 5445-232
Approx MH depth =7.2 ft

MH 5445-233
Remove and Replace MH Frame & Cover
Approx MH depth = 6.4 ft

Estimated 5 Service Reconnections (4")

SITE 3





Television Inspection Master Report

6/30/2011

12:37 PM

US Structure: 5445-233 1611 S PALISADE ST Date Insp: 5/6/2009 Basin: C05E
 DS Structure: 5445-232 1616 S GOLD ST Dir Televised: Upstream To Downstream

Pipe Information

Project No. : D-121 Dia: 8 Material: VCP Length: 143.8 Slope: 0.400 DVD #0483

Obs. #	VTR Counter	Distance	Location	Description	Rating	Obsrvd (gpm)	Ratings			Remain (gpm)
							Est. (gpm)	Struct	Clean	
1		0.0		5445-233 US Manhole						
2		10.6		Broken Pipe	2	0.008	44	0	0.008	
3		20.6	(water is standing in pipe)	Broken Pipe	3	0.010	60	0	0.010	
4		28.9	1605 S PALISADE / roots	Wye Service	3	0.000	2	0	0.000	
5		30.7		Roots	1	0.002	1	1	0.002	
6		36.1		Roots	1	0.002	1	1	0.002	
7		38.6		Roots	1	0.002	1	1	0.002	
8		46.1		Roots	1	0.002	1	1	0.002	
9		48.7		Roots	1	0.002	1	1	0.002	
10		49.4	1617 S PALISADE / rough clay	Break-In Conn	1	0.001	0	0	0.001	
11		51.5		Roots	1	0.002	1	1	0.002	
12		54.0	ball of roots	Roots	3	0.008	5	8	0.008	
16		54.0	503 W HARRY / full of roots	Wye Service	5	0.000	400	0	0.000	
13		63.9		Roots	2	0.004	2	4	0.004	
14		66.5		Roots	3	0.008	5	8	0.008	
15		74.6		Roots	1	0.002	1	1	0.002	
17		77.6	501 W. Harry & 1603 S. Palisade (broken past first joint outside of main)	Wye Service	2	0.000	0	0	0.000	
18		82.1		Broken Pipe	2	0.008	44	0	0.008	
19		86.9		Roots	3	0.008	5	8	0.008	
20		89.3	(roots bridged completely across the main)	Roots	4	0.010	10	25	0.010	
21		92.2		Roots	3	0.008	5	8	0.008	
22		94.6		Roots	2	0.004	2	4	0.004	
23		101.6	509 W HARRY	Wye Service	1	0.000	0	0	0.000	
24		107.8		Broken Pipe	2	0.008	44	0	0.008	
25		112.4		Heavy Roots	3	0.008	5	8	0.008	
26		122.9		Crack-Radial	3	0.004	5	0	0.004	
27		124.9		Ball of Roots / Wye Service / sealed off	5	0.000	400	0	0.000	
(there is a 2007 sewer permit that states this was a seal off for 509 Harry and it should be sealed 8 feet from the main / <u>verify that</u>) -LML										
28		130.9		Crack-Radial	1	0.001	1	0	0.001	
29		140.8		5445-232 DS Manhole	1					

Poor grade / water is standing in the pipe most of the way. Roots could be holding back water too. -LML