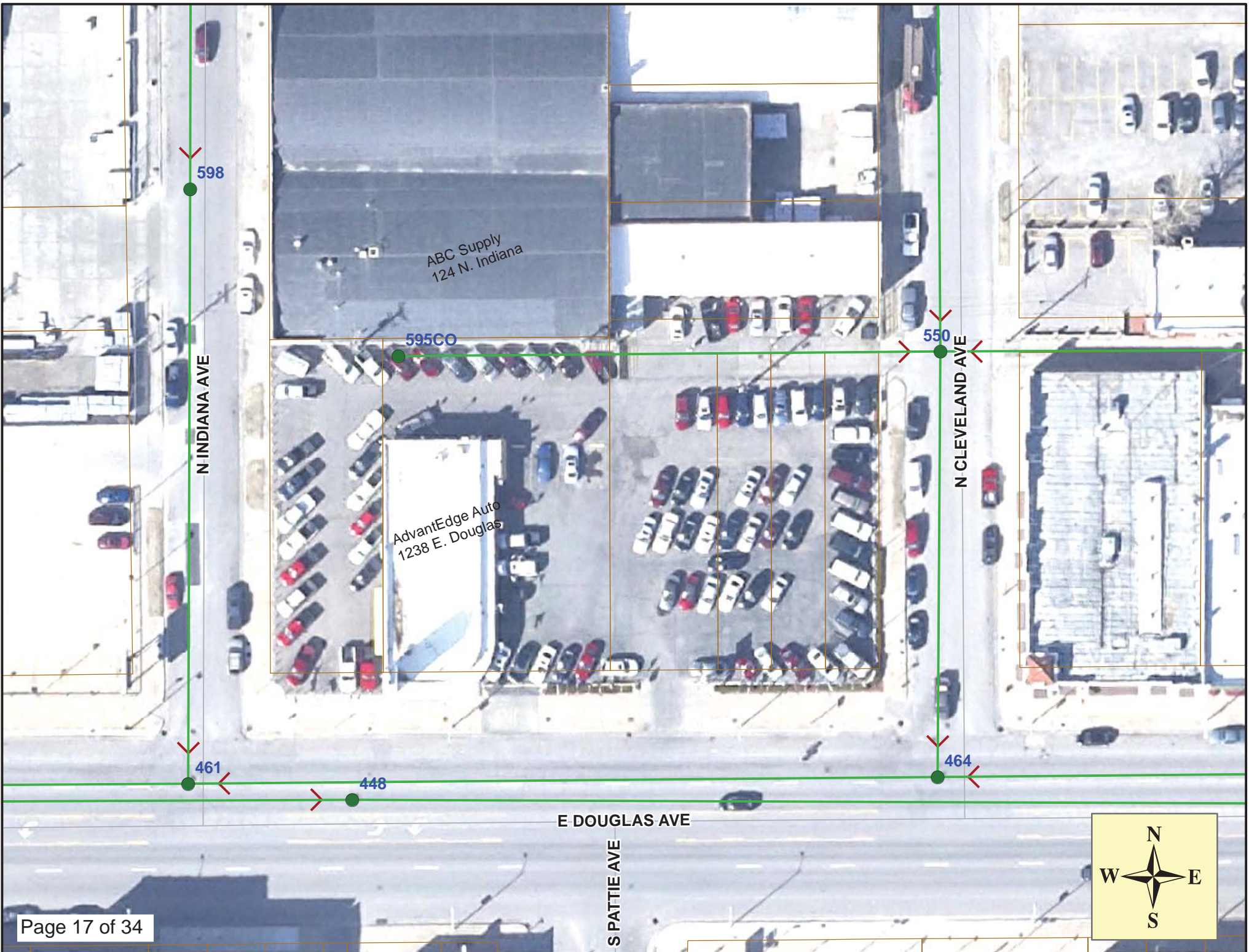


SITE 4

Estimated 3 Service Reconnections (4")



ABC Supply
124 N. Indiana

AdvantEdge Auto
1238 E. Douglas

598

595CO

550

N INDIANA AVE

N CLEVELAND AVE

461

448

464

E DOUGLAS AVE

S PATTIE AVE





Video Inspection Master Report

4/25/2013

8:14 AM

US Structure: 5547-595CO 1224 E DOUGLAS AVE Date Insp: 4/5/2013 Basin: C03A
 DS Structure: 5547-550 1300 E DOUGLAS AVE Dir Televised: Downstream To Upstream

Pipe Information

Project No. : A-427 Dia: 8 Material: VCP Length: 215.0 (record) 230.0 (tv) -LML

Obs. #	VTR Counter	Distance	Location	Description	Rating	Obsrvd (gpm)	Ratings			Remain (gpm)
							Est. (gpm)	Struct	Clean	
1		0.0		5547-550 DS Manhole	2	Located In Cleveland Street				
(video starts with water standing in the pipe / then camera footage jumps from 0' to 27' feet with no video available for that footage) -LML										
2		28.0		Wye Service	3	Vacant Lot-Needs Sealed Off				
3		30.8		Broken Pipe	3	Needs Repair				
4		31.8	119 N Cleveland	North Break-In Conn	2					
5		36.1		Break-In Conn	3	Open connection-carlot parking Lot				
6		51.2		Broken Pipe	4	Needs Repair				
7		54.6		Wye Service	2	Open Lot				
8		75.0		Observation Hole (OH)	2	<u>Open grate at surface</u>				
<i>(OH and grate to be removed)</i>										
9		77.5		Sealed Off Wye	1					
10		80.7		Wye Service	2	Faces open Lot / debris / not sealed at the main				
11		103.8		Sealed Off Wye	2					
12		126.9		Sealed Off Wye	2					
13		134.7		Wye Service	3	Faces open Lot / not sealed at the main				
14		142.5	Faces 1238 E Douglas	Wye Service	2	MAY NOT BE ACTIVE – NEEDS VERIFIED				
15		144.7		Observation Hole	1	Sealed Off				
16		145.1		Broken Pipe	3					
17		145.1	Camera cannot pass	Stopped Inspection	3	Pipe Changes to 6" diameter				

A mini camera was installed in the observation hole at the open grate, located at 75' west of MH 5547-550, in an attempt to televise the remaining 6" pipe. The mini camera cannot pan/tilt to look around. The following footages are approximate: - LML

- 157.0 South facing wye
- 182.0 Tap for 1238 Douglas (obviously active)
- 207.0 South facing wye
- 210.0 North facing wye (looks like it could be active – needs verified by contractor)
- 230.0 North facing wye
- 230.0 Camera can't proceed / sand or debris in the pipe / this should be where a cleanout ended the line (either the cleanout has collapsed or the pipe was capped off and that seal is broken)