

GENERAL NOTES:

1. Contractor will be required to provide notice to utility companies a minimum of seventy-two (72) hours prior to any excavation, as follows:

Kansas One-Call 687-2470

The Contractor must notify the following in case of an emergency:

Cox Communications 262-4270
 Kansas Gas Service 1-888-482-4950
 Westar Energy 383-8650
 Black Hills Energy 1-800-303-0357
 AT&T 268-2245
 City of Wichita Water Dept. 268-4563
 City of Wichita Sewer Maint. 268-4024
 City of Wichita Storm Sewer Maint. 268-4090
 City of Wichita Traffic Maint. 268-4034
 Conoco Phillips Pipeline Co. 1-877-267-2290
 Southern Star Pipeline Co. 529-6600
 Kinder-Morgan Pipeline Co. 1-888-844-5658

2. Utility service lines, poles, valve boxes, meters, and etcetera are to be adjusted as necessary by others prior to construction unless the plans specifically call for their adjustment by the Contractor or unless the plans specifically identify a utility to be adjusted by its owner during construction. Existing utilities and their location, as shown on the plans, represent the best information obtainable for design. The Contractor will be required to work around existing utilities within the right-of-way which do not conflict with proposed construction.

3. Rubble from the removal of miscellaneous structures and excess excavation which is to be wasted shall be disposed of on sites to be provided by the Contractor. These sites shall be approved by the Engineer as to suitability, appearance and site location. Locations, in the opinion of the Engineer, that will leave an unsightly appearance will not be approved. All disposal sites must be approved by the Kansas Department of Health and Environment. Material either stockpiled or disposed of in a flood plain would require a Kansas State Board of Agriculture permit. Any material dumped in waters of the United States or wetlands is subject to U.S. Corps. of Engineers permitting regulations. Any material buried or stockpiled beyond approved construction limits would require additional archaeological investigations unless buried in a previously approved borrow location.

4. Trees and shrubs in public right-of-way which are in direct conflict with proposed new construction shall be removed by the Contractor with the Engineer's approval. Trees and shrubs which are not in direct conflict with proposed new construction shall be saved and protected from damage.

5. The Contractor shall give all property owners and/or tenants of developed property abutting the construction of this project a minimum of ten (10) days notice prior to start of construction.

6. The Contractor shall be responsible for preserving property irons. The Contractor will be required to re-establish any property irons which are damaged or destroyed by his construction operations. Such irons shall be re-established by a licensed land surveyor in accordance with state laws.

7. All existing and proposed erosion control measures including silt fencing, erosion control mat, straw bales, inlet barriers, and const. entrance shall be maintained throughout construction by the contractor and until project is accepted by the City of Wichita. The on-site engineer shall complete weekly reports on the status of erosion control measures. The contractor shall be required to comply with maintenance and/or replacement of erosion control measures as determined by the on-site engineer until project is accepted by City of Wichita.

8. A saw cut of at least one-half the depth of existing surface courses or one-fourth the depth of the existing total pavement thickness shall be provided at locations where proposed construction abuts the existing surface course or pavement for which partial removal of that surface or pavement is required. Sawed joint to facilitate removal within three (3) feet of existing joints will not be permitted and for such instances the limits of removal shall extend to the existing joint. Such saw cuts will not be paid for directly and this cost shall be considered as subsidiary to the removal of the surface or pavement.

9. Limits of earthwork shall match existing ground elevations at the right-of-way line unless otherwise noted on the plans with a new finished grade elevation. When a new finished grade elevation is shown, the earthwork shall extend one foot beyond the right-of-way line and then slope up or down using permissible slopes to match the existing ground surface.

10. Mail delivery shall not be interrupted during construction of this project. While mailboxes have been removed waiting for relocation, the mailboxes shall be installed at temporary locations to maintain mail service during construction. The Contractor shall contact the Postal Service prior to any work that would affect mail delivery.

STREET PAVING FOR 36TH STREET NORTH WITH INCIDENTAL SWS IMPROVEMENTS

36th Street North, from Arkansas Avenue, east to and including hammerhead

CITY OF WICHITA, KANSAS

Gary Janzen, P.E. City Engineer

Paving Project Number

472-84992

O.C.A. Number

766265

FINAL PLANS

MAY 2013

Water Project Number

448-90594

O.C.A. Number

636284

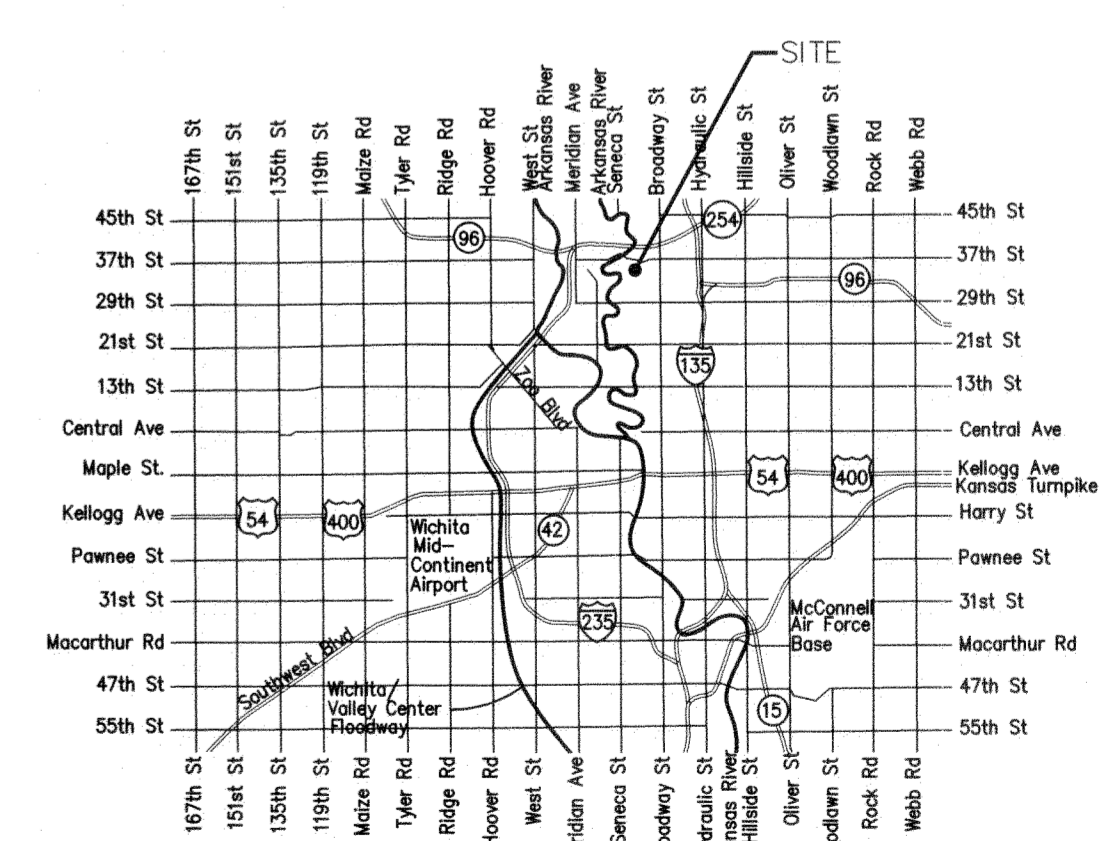
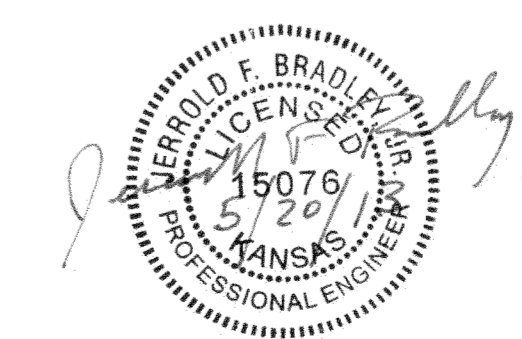
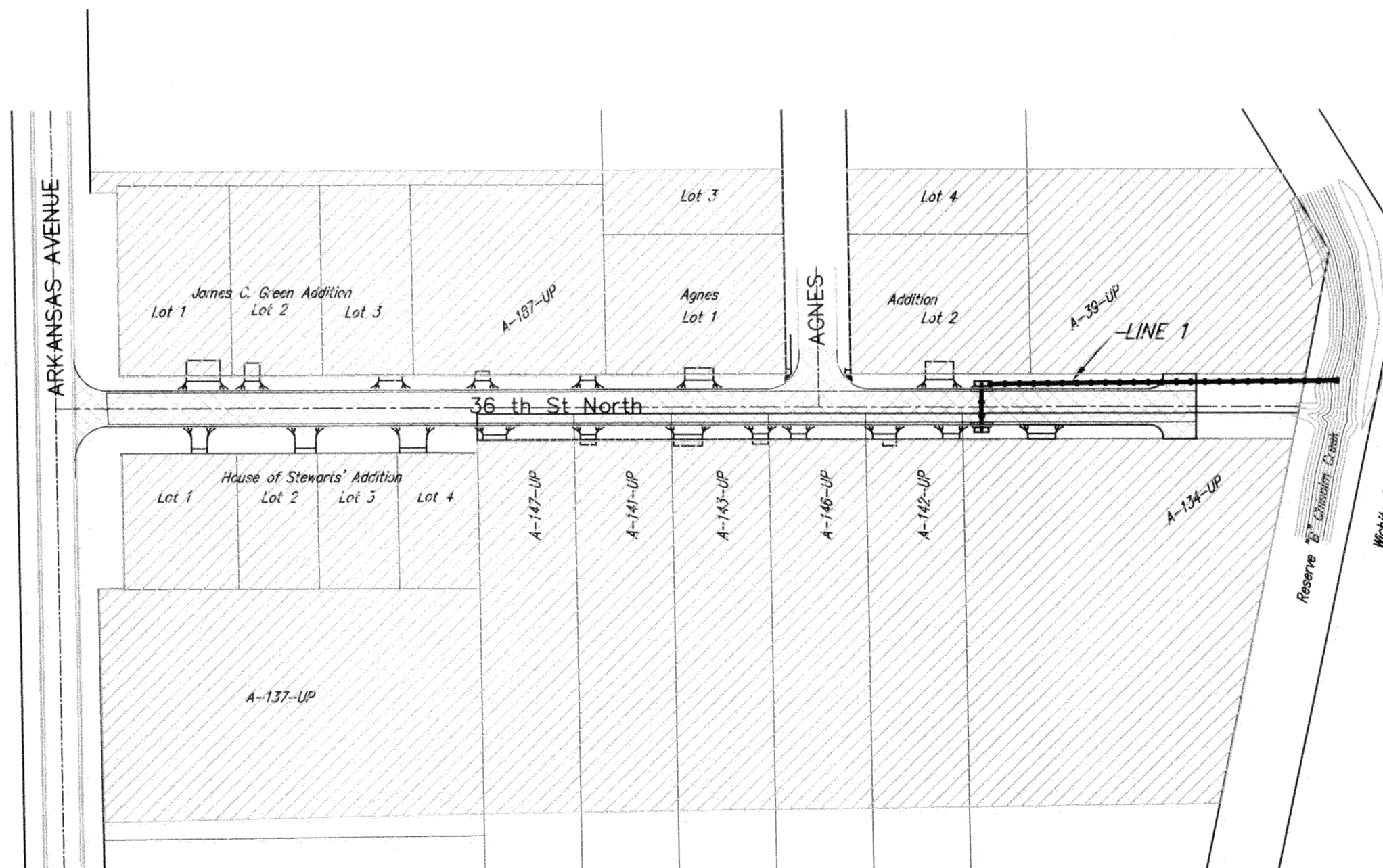
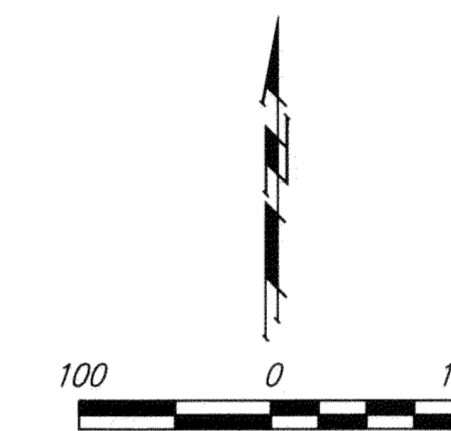
Benchmarks

BM #1 Cross on East Edge of Sidewalk on West Side Arkansas Ave. 20' North of Centerline 36th St.
 Elev. = 1318.39 NAVD "88"

BM #2 Cross on Sidewalk on East Side Agnes St. 28' North of Centerline 36th St. 23' East of Centerline Agnes
 Elev. = 1318.70 NAVD "88"

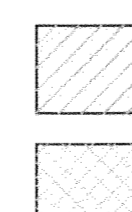
Sheet Index

Title Sheet	1
29' Pavement Section	2
Curb & Gutter Details	3
Pavement Underdrain Details	4
Wheelchair Ramp Details	5
Paving Details	6
Valley Gutter Details	7
Signing Details	8
Std. Drive Details	9
36th Street North	10-11
SWS Line 1	12
Std. Type 1A Double Inlet Detail	13
MH-Inlet Frame & Cover Detail SWS	14
MH-Frame & Cover Detail SS	15
Erosion Control Plan	16
Erosion Control BMP Details	17-20
Water Meter Table	21
Coordinate Sheet	22
Street X-Sections	23-24



Vicinity Map

Benefit District
 Proposed Streets



Project Earthwork Totals

Excavation = 2,340 C.Y.
 Loose Fill = 8 C.Y.

Total Project Length

867.75 L.F. = 0.16 Miles



Baughman Company, P.A. 315 Ellis St. Wichita, KS 67211 P 316-262-7271 F 316-262-0149
 ENGINEERING | SURVEYING | PLANNING | LANDSCAPE ARCHITECTURE