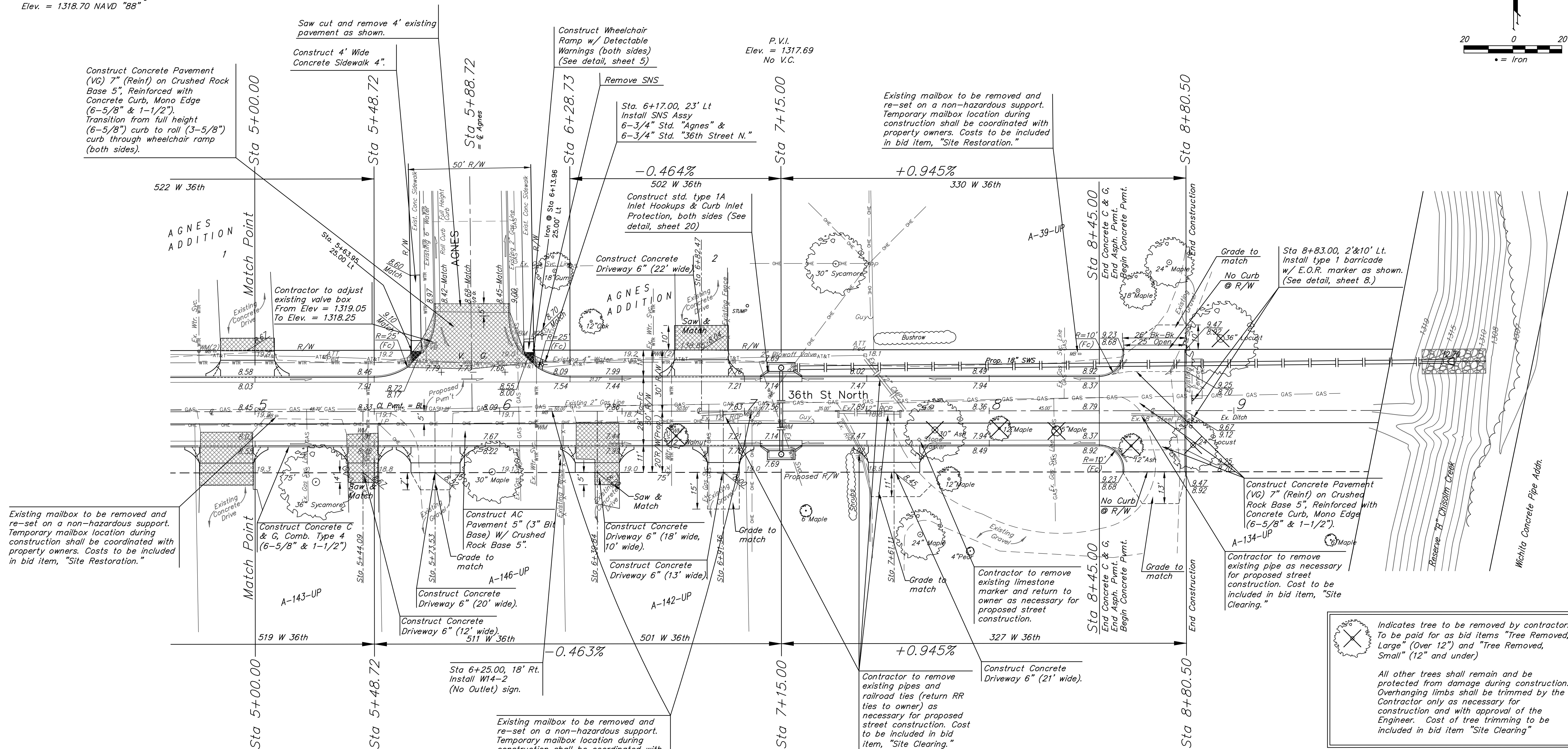
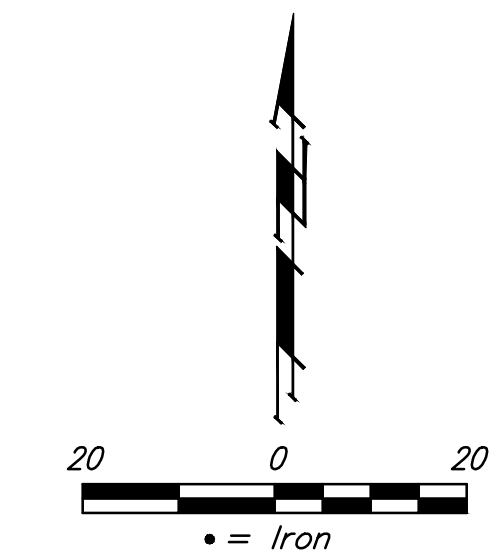


BENCHMARKS:
 BM #1 Cross on East Edge of Sidewalk
 on West Side Arkansas Ave. 20' North of
 Centerline 36th St.
 Elev. = 1318.39 NAVD "88"

BM #2 Cross on Sidewalk on East Side
 Agnes St. 28' North of Centerline 36th
 St. 23' East of Centerline Agnes
 Elev. = 1318.70 NAVD "88"



Existing mailbox to be removed and re-set on a non-hazardous support. Temporary mailbox location during construction shall be coordinated with property owners. Costs to be included in bid item, "Site Restoration."

Existing mailbox to be removed and re-set on a non-hazardous support. Temporary mailbox location during construction shall be coordinated with property owners. Costs to be included in bid item, "Site Restoration."

Sta 8+83.00, 2'x10' Lt. Install type 1 barricade w/ E.O.R. marker as shown. (See detail, sheet 8.)

Construct Concrete Pavement (VG) 7" (Reinf) on Crushed Rock Base 5", Reinforced with Concrete Curb, Mono Edge (6-5/8" & 1-1/2").

Contractor to remove existing pipe as necessary for proposed street construction. Cost to be included in bid item, "Site Clearing."

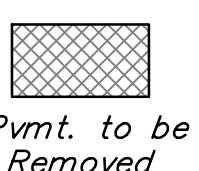
Indicates tree to be removed by contractor. To be paid for as bid items "Tree Removed, Large" (Over 12") and "Tree Removed, Small" (12" and under)

All other trees shall remain and be protected from damage during construction. Overhanging limbs shall be trimmed by the Contractor only as necessary for construction and with approval of the Engineer. Cost of tree trimming to be included in bid item "Site Clearing"

Curb to be depressed through drive (1-1/2" lip curb through opening). See drive detail, sheet 9. Curb shall still be paid for as L.F. "Concrete C & G, Comb. Type 2 (6-5/8" & 1-1/2)"

Power poles, guy poles and gas mains to be relocated by respective utility companies prior to construction.

Existing driveways marked "Saw & Match" shall be saw cut at specified distance from property line, and pavement removed. Saw cut and removal to be incidental to S.F. Concrete Driveway 6", Removed



Pvmt. to be Removed

Baughman 36TH STREET NORTH
PAVING PLAN
STA 5+00 TO 8+78
PAVING PLAN

Baughman Company, P.A. 315 Ellis St. Wichita, KS 67211 P 316-262-7271 F 316-262-0149	
ENGINEERING SURVEYING PLANNING LANDSCAPE ARCHITECTURE	
PROJECT NUMBER 472-84992	DRAWN TMS
DESIGN KEK	APPROVED DATE 01/12
REVISIONS:	SCALE NOTED
	SHEET
11 OF 24	