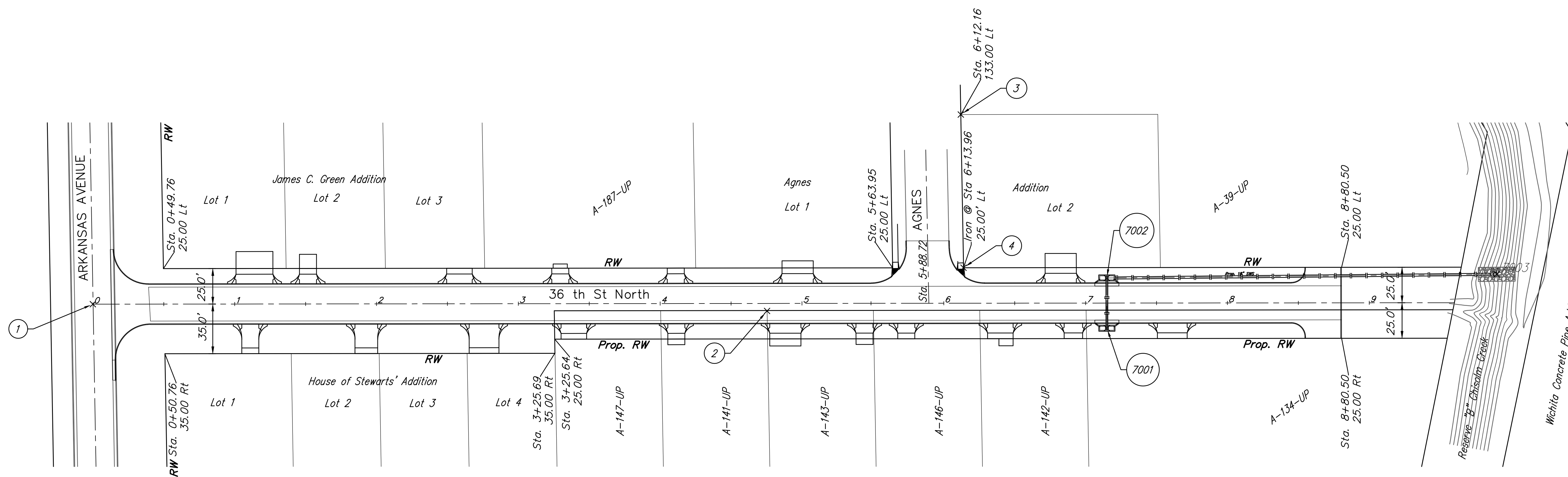
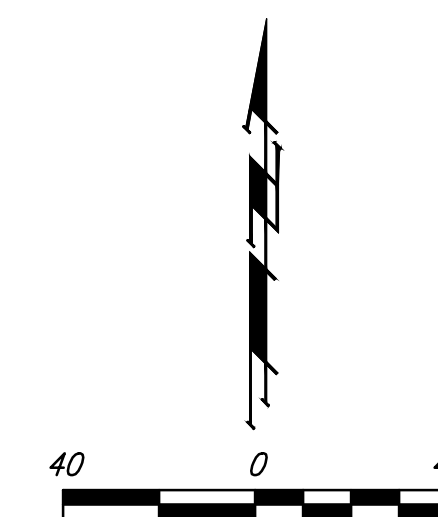


BENCHMARKS:
 BM #1 Cross on East Edge of Sidewalk
 on West Side Arkansas Ave. 20' North
 of Centerline 36th St.
 Elev. = 1318.39 NAVD "88"

BM #2 Cross on Sidewalk on East Side
 Agnes St. 28' North of Centerline 36th
 St. 23' East of Centerline Agnes
 Elev. = 1318.70 NAVD "88"

POINT TABLE					
POINT #	STA.	OFFSET	NORTHING	EASTING	DESCRIPTION
1	0+00	0.00'	5676.53	4987.84	℄'s 36th Street/Arkansas Ave
2	4+75.40	15.25' Rt.	5671.77	5463.24	IRON PIPE
3	6+12.16	133.00 Lt.	5810.21	5599.86	IRON PIPE
4	6+13.96	15.00' Lt.	5702.20	5601.78	IRON
7001	7+15.00	17.67' Rt.	5659.64	5702.86	CENTER 1a INLET
7002	7+15.00	17.67' Rt.	5694.98	5702.83	CENTER 1a INLET
7003	9+89.97	10.00' Lt.	5697.61	5977.79	END SWS @ END SEC.



	36TH STREET NORTH	
	COORDINATE SHEET	
PAVING PLANS		
<small>Baughman Company, P.A. 315 Ellis St. Wichita, KS 67211 P 316-262-7271 F 316-262-0149 ENGINEERING SURVEYING PLANNING LANDSCAPE ARCHITECTURE</small>		
PROJECT NUMBER 472-84992	DESIGN TMS	DRAWN TMS
REVISIONS:	APPROVED JFB	DATE 01/12
SCALE Noted		SHEET 22 OF 24