

MH 5846-265
 Replace MH Frame & Cover
 Approx depth = 10.8 ft
 (located between fences)

MH 5846-264
 Replace MH Frame & Cover
 Approx depth = 14.5 ft

MH 5846-263
 Approx depth = 9.3 ft
 5714 E. Harry
 (between fences)

MH 5846-262
 Replace MH Frame & Cover
 Approx depth = 10.0 ft
 5702 E. Harry

MH 5846-261
 Approx depth = 8.1 ft

Remove and replace 486 lf of 8" pipe from MH 5846-265 to MH 5846-261

Estimated 5 Service Reconnections (4")

Seeding will be allowed

Estimated 50 sy Erosion Control Mat
 Estimated 60 lf Back of Curb Protection

Remove and replace approx 32 lf of Concrete Pavement (incl. curb & gutter) in Grand Ave.

Remove and replace approx 8 lf of Concrete Pavement (incl. curb & gutter) in Christine Rd.

Install 40 lf of Flowable Fill

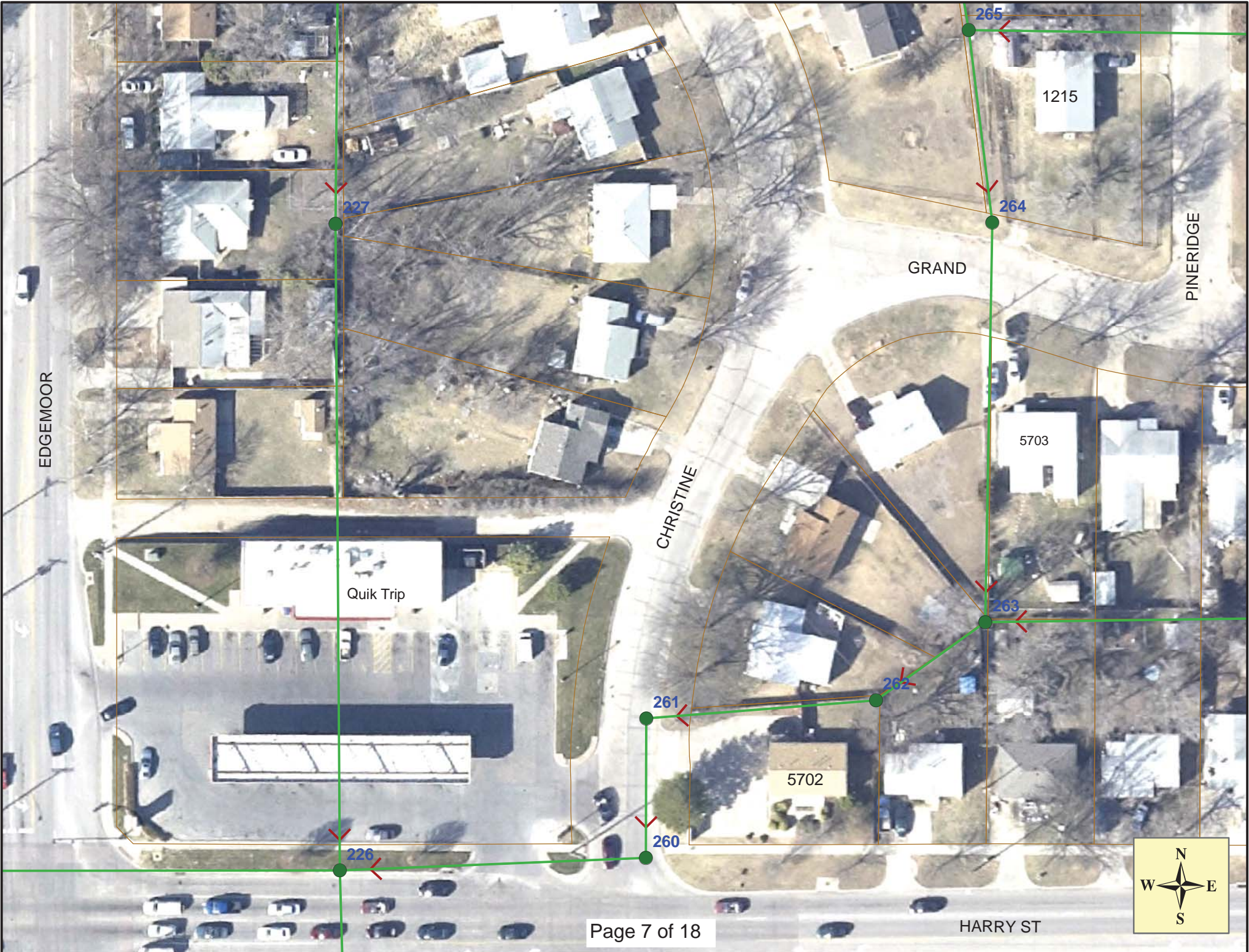
Remove and replace approx 39 lf of Concrete Driveway at 5703 E. Grand

Remove and replace approx 35 lf of Concrete Driveway at 5702 E. Harry (est.)

(all pavement shall match existing)

SITE 2







Video Inspection Master Report

7/2/2013

7:38 AM

US Structure: 5846-265 1215 PINERIDGE ST Date Insp: 8/26/2008 Basin: E04A
 DS Structure: 5846-264 1215 PINERIDGE ST Dir Televised: Up->Down

Pipe Information

Shape:	Round	Length Status:		Project No. :	F-176
Dia/Ht:	8	Material:	VCP	Index:	
Length:	99.6	Slope:	0.100	DVD #	#0437

Comments: PIPE IN GOOD CONDITION. SAGS THROUGH OUT LINE

Obs. #	VTR Counter	Distance	Location	Description	Rating	Obsrvd (gpm)	Ratings			Remain (gpm)
							Est. (gpm)	Struct	Clean	
1		0.0	US Manhole	5846-265	1		0.000	0	0	0.000
2		3.0	Joint		Offset	3	0.010	20	0	0.010
3		82.1		Sealed Off Wye West 4" Clay Wye Connection	1		0.000	0	0	0.000
4		21.7	Camera Lens	Emerged	Sag	3	0.000	5	0	0.000
5		29.6	Camera Lens	Submerged	Sag	1	0.000	1	0	0.000
6		34.0	Camera Lens	Emerged	Sag	3	0.000	5	0	0.000
7		39.3	Camera Lens	Submerged	Sag	1	0.000	1	0	0.000
8		48.4	Camera Lens	Emerged	Sag	3	0.000	5	0	0.000
9		52.0	Camera Lens	Submerged	Sag	1	0.000	1	0	0.000
10		63.7	Camera Lens	Emerged	Sag	3	0.000	5	0	0.000
11		85.0	Camera Lens	Submerged	Sag	1	0.000	1	0	0.000
12		99.3	DS Manhole	5846-264	1		0.000	0	0	0.000

SAGS THROUGH OUT LINE 5

Pipe grade is very flat. The area has maintenance problems. Need to eliminate the sags.



Video Inspection Master Report

7/2/2013

7:38 AM

US Structure: 5846-264 1215 PINERIDGE ST Date Insp: 8/21/2008 Basin: E04A
 DS Structure: 5846-263 5714 E HARRY ST Dir Televised: Upstream To Downstream

Pipe Information

Shape: Round	Length Status:	Project No. : F-176
Dia/Ht: 8	Material: VCP	Index:
Length: 201.9	Slope: 0.099	DVD #0435

Obs. #	VTR Counter	Distance	Location	Description	Rating	Obsrvd (gpm)	Ratings			Remain (gpm)
							Est. (gpm)	Struct	Clean	
1		0.0	US Manhole	5846-264	1		0.000	0	0	0.000
2		125.6	Upper Left	Broken Pipe	1		0.004	30	0	0.004
3		128.2	West	Wye Service	1		0.000	0	0	0.000
				1238 S CHRISTINE 4" Clay Wye Connection						
4		146.0	Camera Lens Emerged	Sag	4		0.000	10	0	0.000
5		151.5	Camera Lens Submerged	Sag	1		0.000	1	0	0.000
6		152.3	End	Sag	1		0.000	1	0	0.000
7		165.6	Camera Lens Emerged	Sag	2		0.000	2	0	0.000
8		168.4	Camera Lens Emerged	Sag	4		0.000	10	0	0.000
9		173.2	Camera Lens Submerged	Sag	1		0.000	1	0	0.000
10		187.1	Camera Lens Emerged	Sag	3		0.000	5	0	0.000
				196.0 Offset Joint / camera can't crawl into the manhole -LML						
11		201.2	DS Manhole	5846-263	1		0.000	0	0	0.000

Comment: SAGS 4

Pipe grade is very flat. The area has maintenance problems. Offset joint needs repair. Need to eliminate the sags.



Video Inspection Master Report

7/2/2013

7:38 AM

US Structure: 5846-263 5714 E HARRY ST Date Insp: 1/19/2007 Basin: E04A
 DS Structure: 5846-262 5702 E HARRY ST Dir Televised: Upstream To Downstream

Pipe Information

Shape: Round Length Status: Project No. : F-176
 Dia/Ht: 8 Material: VCP Index:
 Length: 67.6 Slope: 0.162 Surface:

Comments: PIPE 1. OFFSETS SAGS. #3 OPEN CUT DUE TO SAGS.

Obs. #	VTR Counter	Distance	Location	Description	Rating	Obsrvd (gpm)	Ratings			Remain (gpm)
							Est. (gpm)	Struct	Clean	
1		0.0	US Manhole	5846-263	1		0.000	0	0	0.000
2		7.6	Joint		Roots	1	0.002	1	1	0.002
3		10.1	Start		Sag	2	0.000	2	0	0.000
4		13.0	Joint		Offset	2	0.000	0	0	0.000
5		16.2	Joint		Offset	2	0.000	0	0	0.000
6		19.0	Joint		Offset	3	0.010	20	0	0.010
7		22.6	Joint		Offset	2	0.000	0	0	0.000
8		24.0	North	1244 S CHRISTINE	4" Wye Service / roots	3	0.000	2	0	0.000
9		29.0	Joint		Offset	2	0.000	0	0	0.000
10		37.7	Joint		Offset	3	0.010	20	0	0.010
11		48.1			Sealed Off Wye North	1	0.000	0	0	0.000
12		49.8	Joint		Offset	2	0.000	0	0	0.000
13		51.6	South	5708 E HARRY	4" Wye Service	1	0.000	0	0	0.000
14		58.9	Joint		Offset	2	0.000	0	0	0.000
15		64.4	Lower Left		Broken Pipe	2	0.008	44	0	0.008
16		66.3	DS Manhole	5846-262		1	Comment: <u>OFFSETS & SAGS</u>			

Sag recap without using a cleaner:

17		11.0			Sag	2	0.000	2	0	0.000
18		13.6			Sag	2	0.000	2	0	0.000
19		22.1	Camera Lens	Emerged	Sag	5	0.000	25	0	0.000
20		29.0	Camera Lens	Submerged	Sag	5	0.000	25	0	0.000
21		31.8	Camera Lens	Emerged	Sag	4	0.000	10	0	0.000
22		34.7	Camera Lens	Submerged	Sag	4	0.000	10	0	0.000
23		42.2	Camera Lens	Emerged	Sag	5	0.000	25	0	0.000
24		50.0	Camera Lens	Submerged	Sag	5	0.000	25	0	0.000
25		52.3	Camera Lens	Emerged	Sag	5	0.000	25	0	0.000
26		65.7	Camera Lens	Submerged	Sag	5	0.000	25	0	0.000

Pipe grade is very flat. The area has maintenance problems. Need to eliminate the sags.

Video Inspection Master Report

7/2/2013

7:38 AM

US Structure: 5846-262 5702 E HARRY ST Date Insp: 1/19/2007 Basin: E04A
 DS Structure: 5846-261 1250 CHRISTINE ST Dir Televised: Upstream To Downstream

Pipe Information

Shape: Round	Length Status:	Project No. : F-176
Dia/Ht: 8	Material: VCP	Index:
Length: 118.4	Slope: 0.059	Surface:

Obs. #	VTR Counter	Distance	Location	Description	Rating	Obsrvd (gpm)	Ratings			Remain (gpm)
							Est. (gpm)	Struct	Clean	
1		0.0	US Manhole	5846-262	1	0.000	0	0	0.000	
2		2.3	Crown	Broken Pipe	3	0.010	60	0	0.010	
3		5.2	Invert	Grease	2	0.000	0	0	0.000	
4		10.3	Invert	Grease	2	0.000	0	0	0.000	
5		13.5	Invert	Grease	2	0.000	0	0	0.000	
6		16.1	Invert	Grease	2	0.000	0	0	0.000	
7		19.2	Invert	Grease	2	0.000	0	0	0.000	
8		21.2	Joint	Sag	3	0.000	5	0	0.000	
9		25.8	North	1250 S. CHRISTINE	Break-In Conn N/A	2	0.002	0	0	0.002
10		28.5	South	5702 E HARRY	Break-In Conn / cracks	2	0.002	0	0	0.002
11		30.0	Invert	Crack-Horizontal	3	0.004	5	0	0.004	
12		31.1	Joint	Offset	2	0.000	0	0	0.000	
13		33.7		Sag	2	0.000	2	0	0.000	
14		44.3		Sag	2	0.000	2	0	0.000	
15		48.1		Sealed Off Wye South	1	0.000	0	0	0.000	
16		53.1		Sag	2	0.000	2	0	0.000	
17		73.4		Sag	2	0.000	2	0	0.000	
18		85.2		Sag	2	0.000	2	0	0.000	
19		97.2		Sag	2	0.000	2	0	0.000	
20		111.0	<u>Camera Blocked</u>		<u>Offset</u>	4	0.030	60	0	0.030
21		113.9		Sag	4	0.000	10	0	0.000	
22		115.3	DS Manhole	5846-261	1					

Comment: SAGS. OFFSET JOINT NEEDS REPAIR.

Elevation Information for Site 2

<u>UPSTREAM MANHOLE</u>	<u>DOWNSTREAM MANHOLE</u>	<u>UPSTREAM INVERT ELEVATION</u>	<u>DOWNSTREAM INVERT ELEVATION</u>	<u>LENGTH (FT.)</u>
5846-265	5846-264	1325.33	1325.23	99
5846-264	5846-263	1325.23	1325.03	201
5846-263	5846-262	1325.03	1324.92	68
5846-262	5846-261	1324.92	1324.85	118