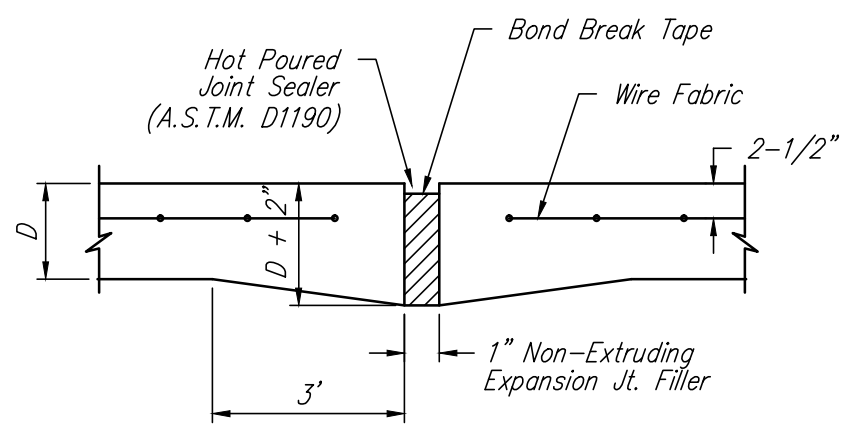
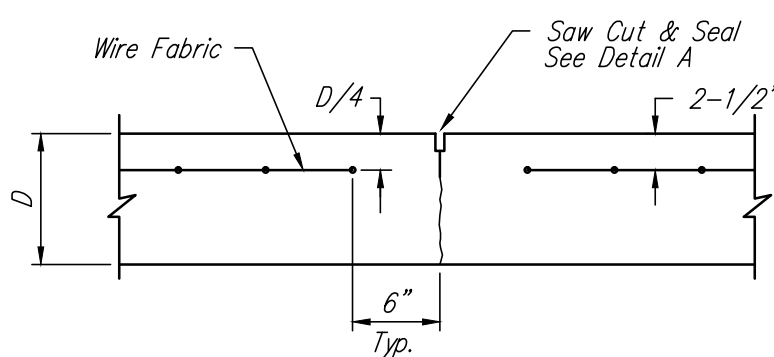


KEYWAY DETAIL

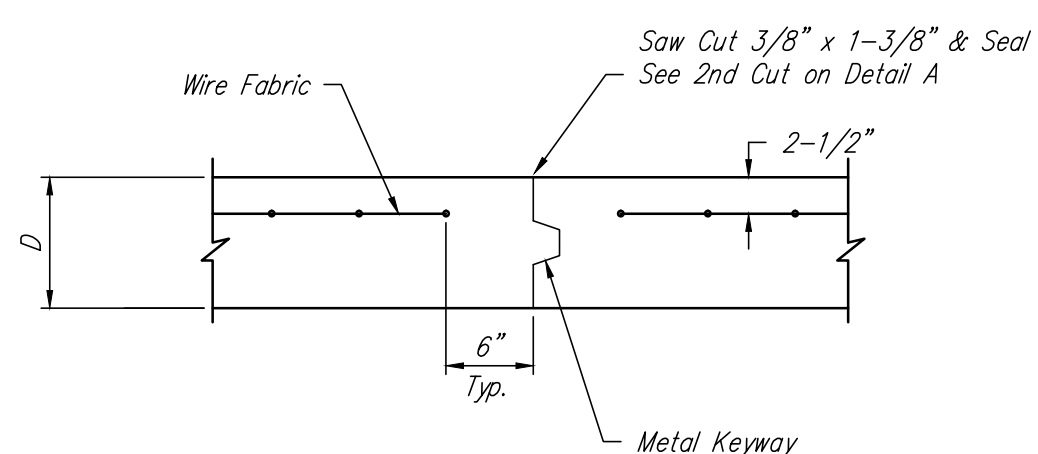


EXPANSION JOINT

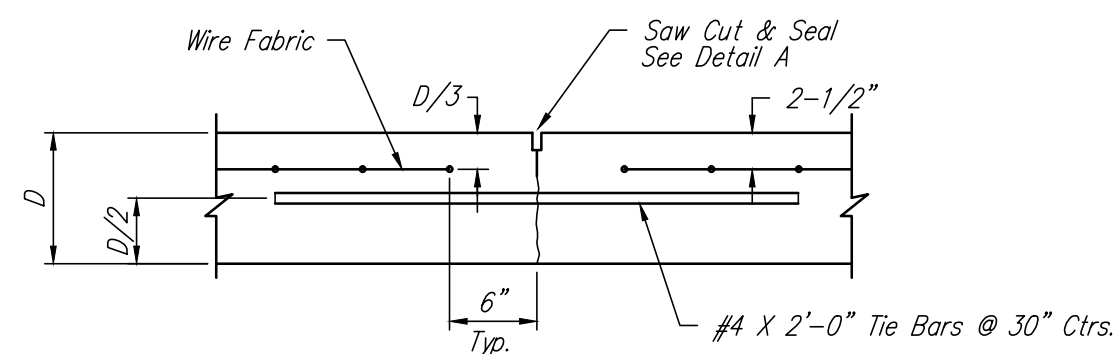
NOTE: Extra Thickness to be Subsidiary to Price of Square Yards Pavement



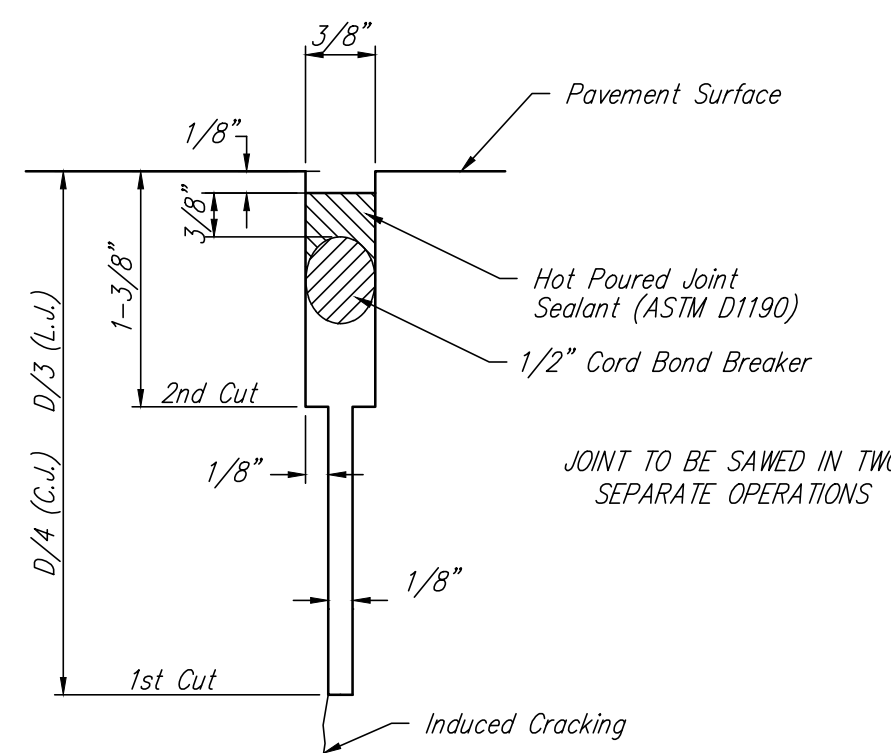
CONTRACTION JOINT DETAIL (C.J.)



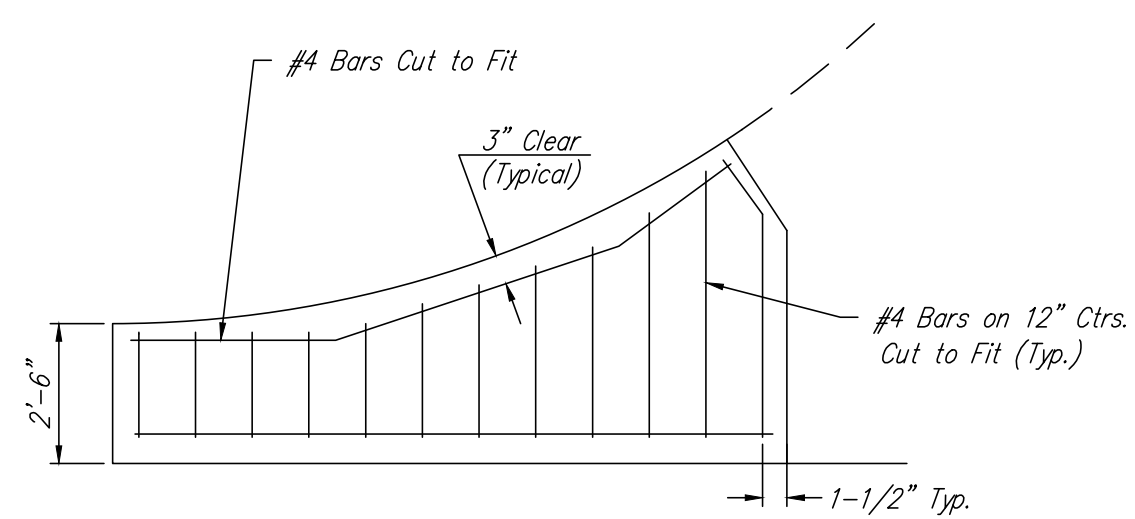
OPTIONAL CONTRACTION JOINT



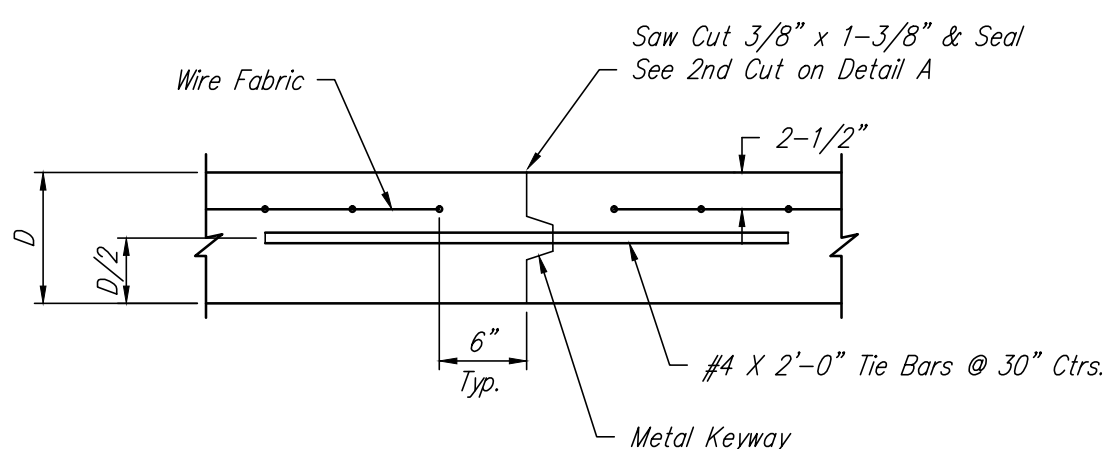
LONGITUDINAL JOINT DETAIL (L.J.)



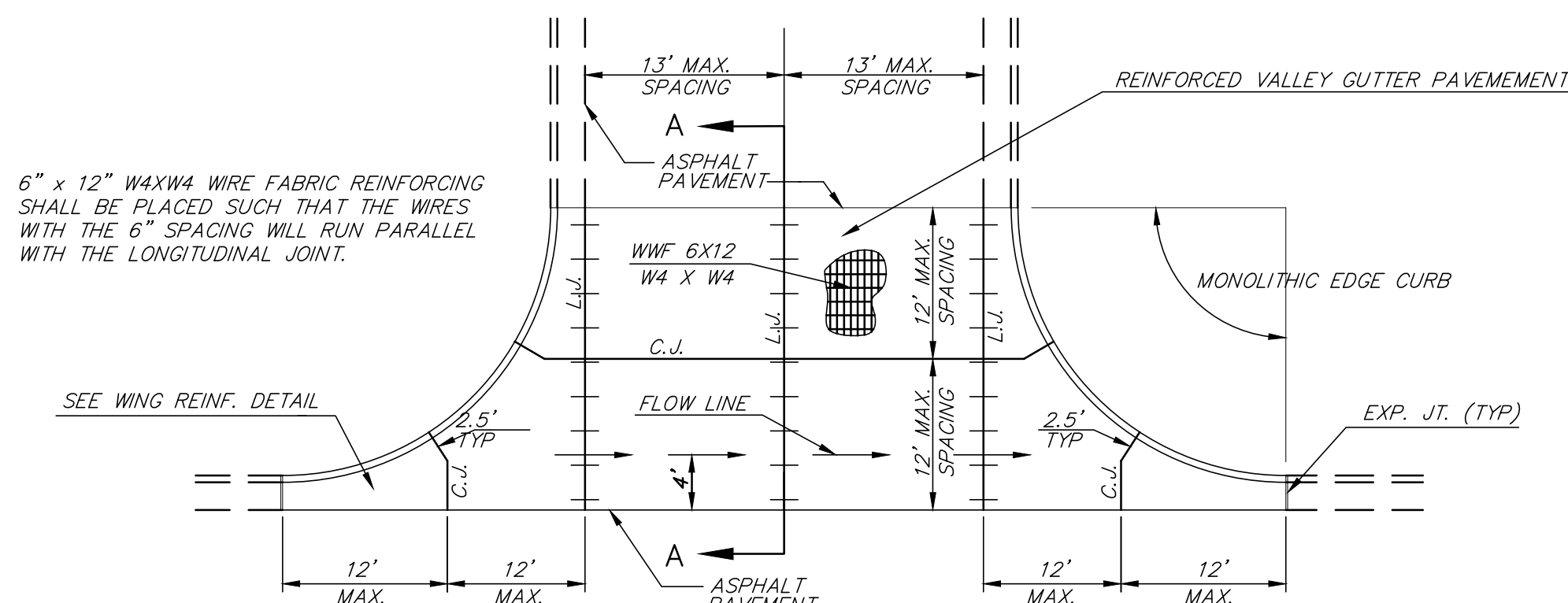
SAW JOINT DETAIL



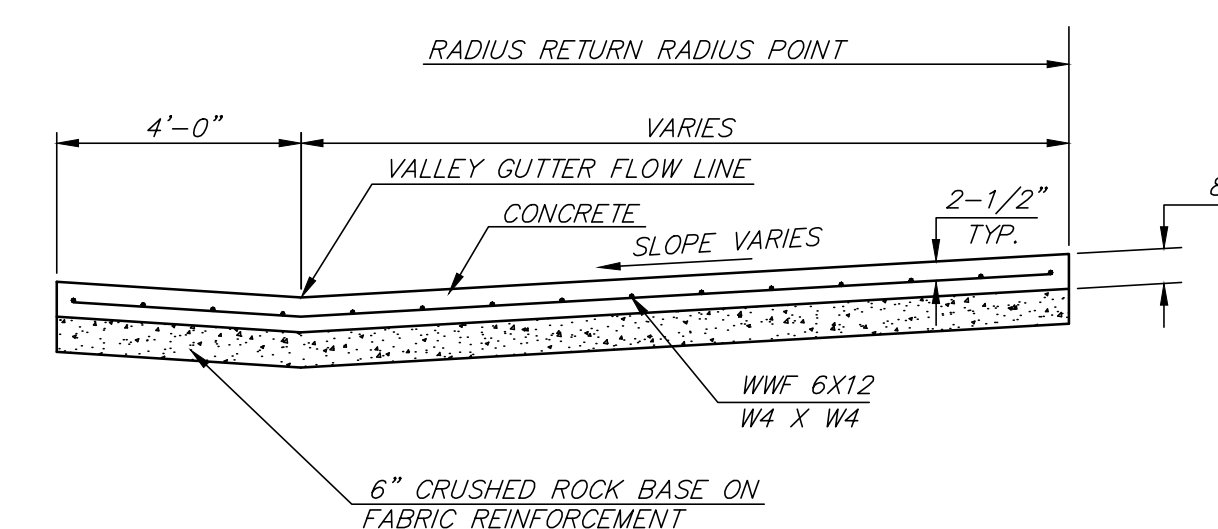
WING REINFORCING DETAIL



OPTIONAL LONGITUDINAL JOINT DETAIL (L.J.)

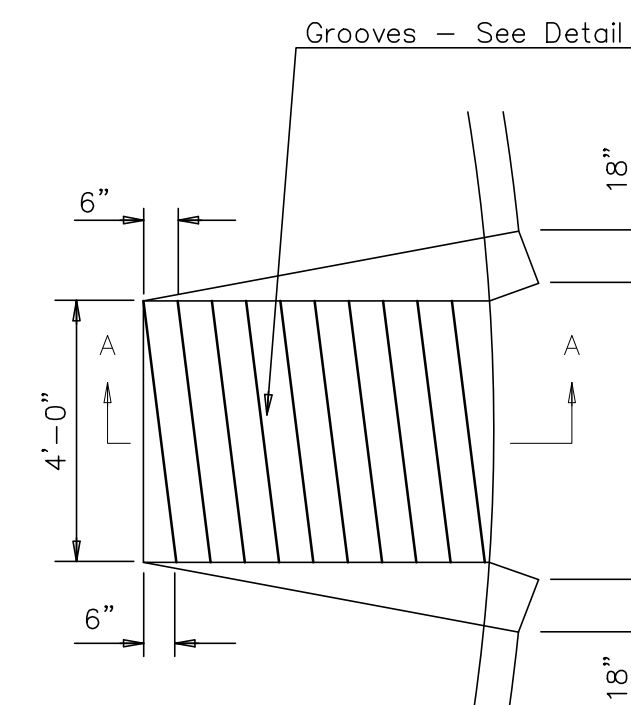


PLAN

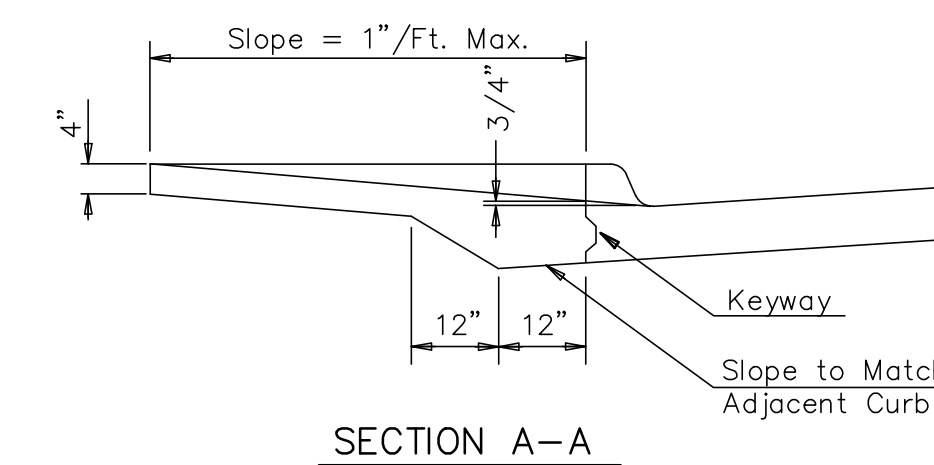


SECTION A-A

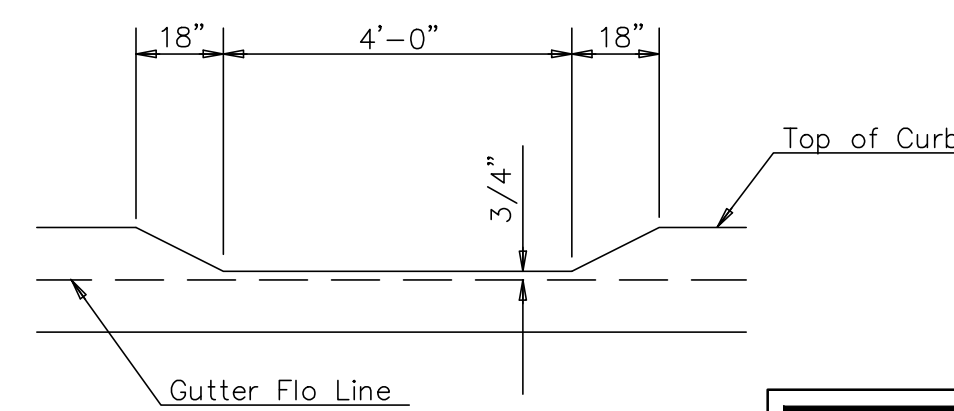
REINFORCED VALLEY GUTTER DETAIL



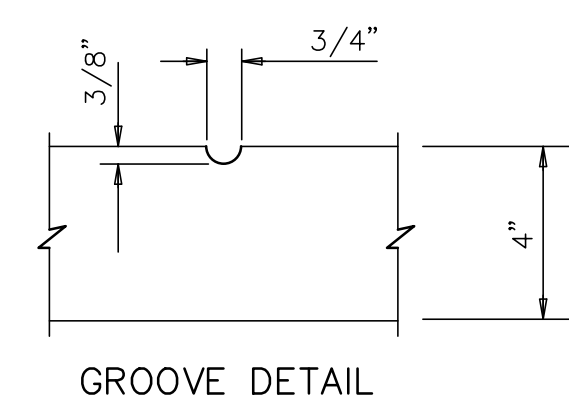
WHEELCHAIR RAMP PLAN VIEW



SECTION A-A

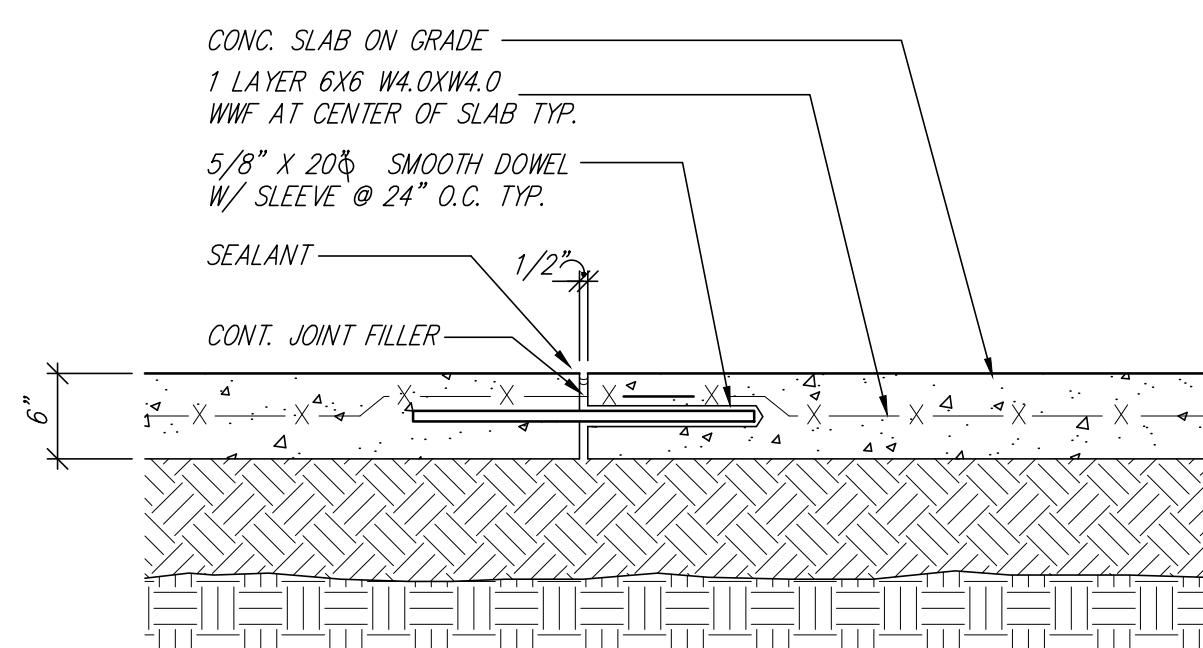


DEPRESSED CURB DETAIL

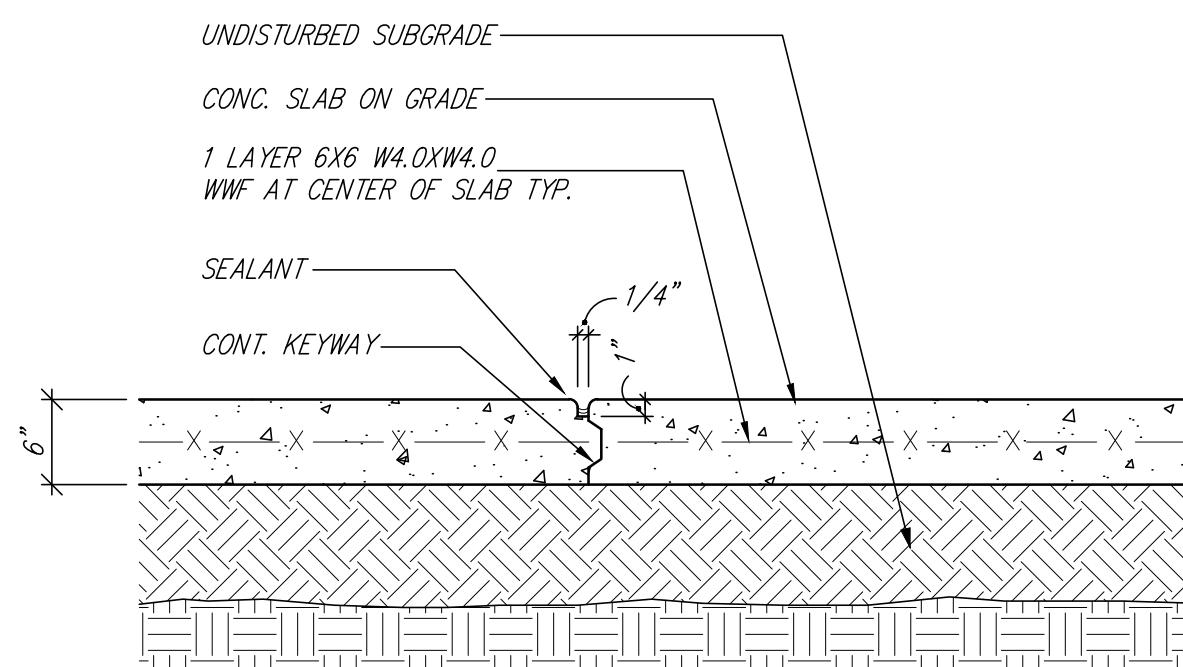


GROOVE DETAIL

WHEELCHAIR RAMP DETAIL



EXPANSION JOINT AT CONCRETE PAVING

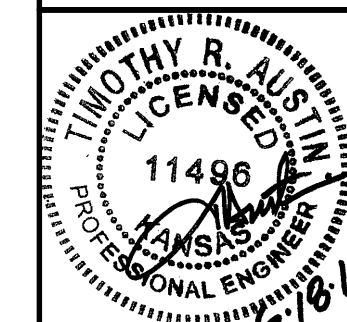
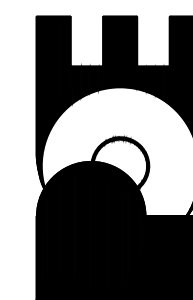


CONST. JOINT DETAIL @ CONG. PAVING

Revision	By	Date
No.		

NORTHBOROUGH ADDITION
STREET AND DRAINAGE IMPROVEMENTS
VALLEY GUTTER AND RAMP
CITY OF WICHITA, KANSAS
GARY JANZEN, P.E. - CITY ENGINEER

POE & ASSOCIATES, INC.
CONSULTING ENGINEERS
5900 E. Central, Suite 200 ■ Wichita, KS 67208-4242
Phone 316.665-4114 ■ FAX 316.665-4444



VALLEY GUTTER DETAILS
WHEELCHAIR RAMP
DETAILS
CITY ENGINEER
GARY JANZEN, P.E.

PROJECT NUMBER	OCA NUMBER	DATE
DESIGN	ABC	DEF
DRAWN	ABC	DEF
SHEET		

FINAL
Engineer: S. SERVIS
Designer: J. UNRUH
Dwg: P. B4.3c B4.3c B4.3c - ROAD - sheets
Date: 6/19/2013
Sheet of 31