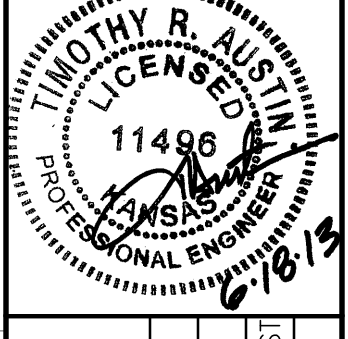
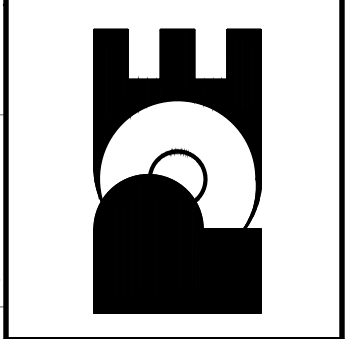


No.	Date	By	Approved	Revision

NORTHBOROUGH ADDITION  
STREET AND DRAINAGE IMPROVEMENTS  
Cross Sections  
CITY OF WICHITA, KANSAS  
GARY JANZEN, P.E. - CITY ENGINEER

POE & ASSOCIATES, INC.  
CONSULTING ENGINEERS  
5900 E. Central, Suite 200 • Wichita, KS 67208-4242  
Phone 316.665-4114 • FAX 316.665-4444



**FINAL**  
Engineer: S. SERVIS  
Designer: J. UNRUH  
Dwg: P:\843c\843c-ROAD-Base-2-SMALLER BEN.DIST  
Date: 7/10/2013