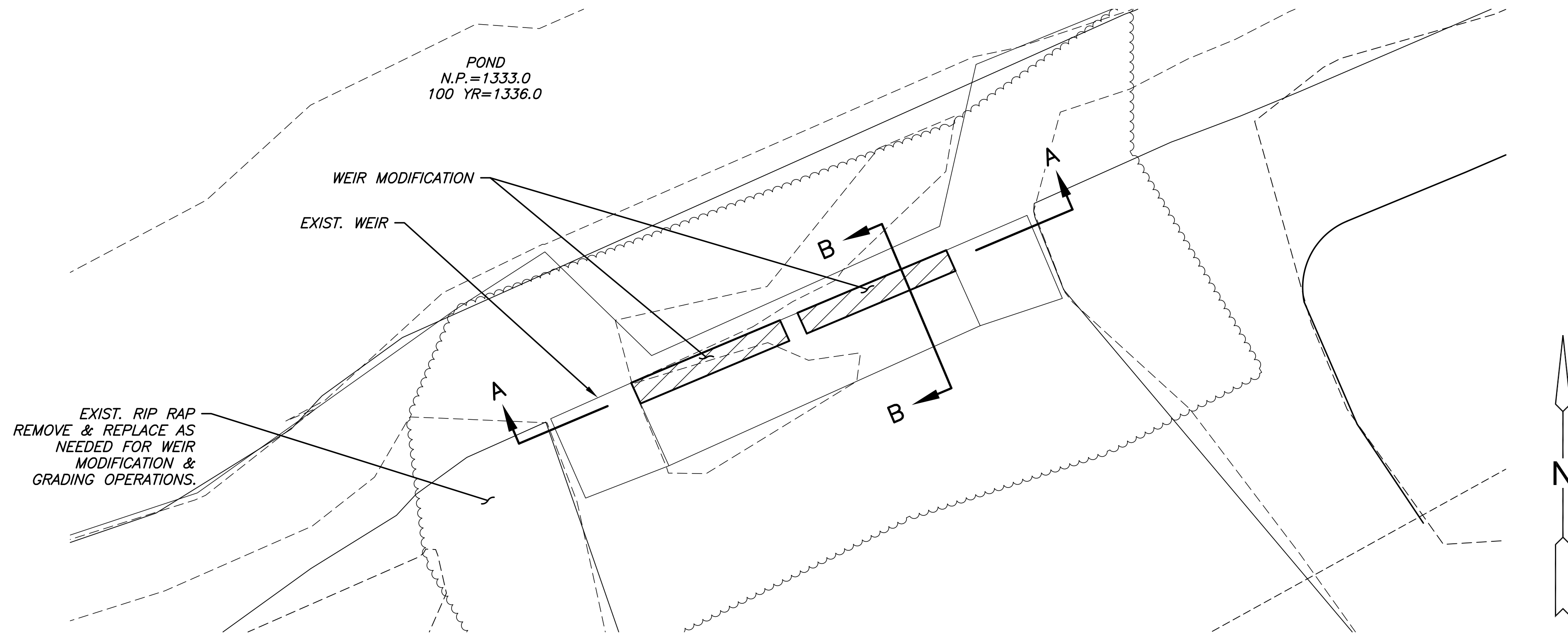


PLOTTED: Tuesday, July 23, 2013 @ 02:12PM

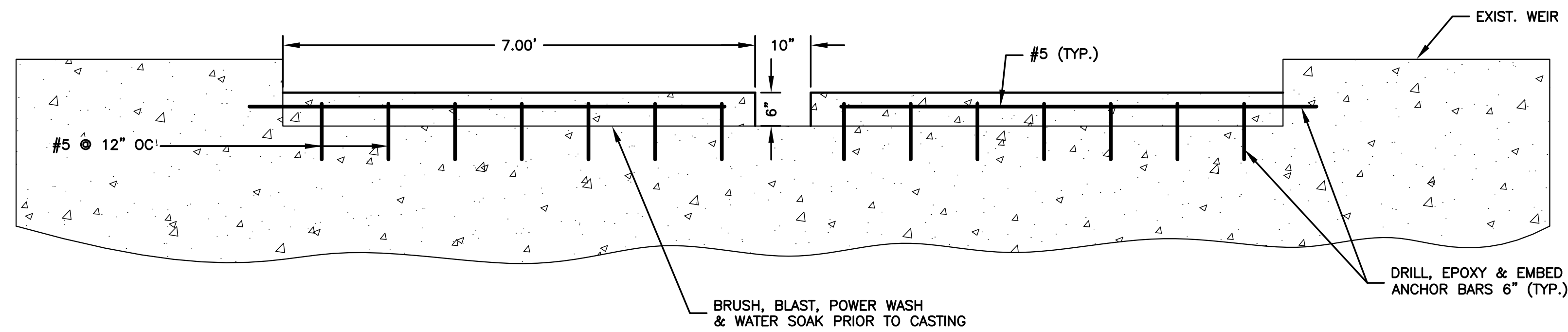
GRADING PLANS FOR
BAY COUNTRY ADDITION
WICHITA, KANSAS



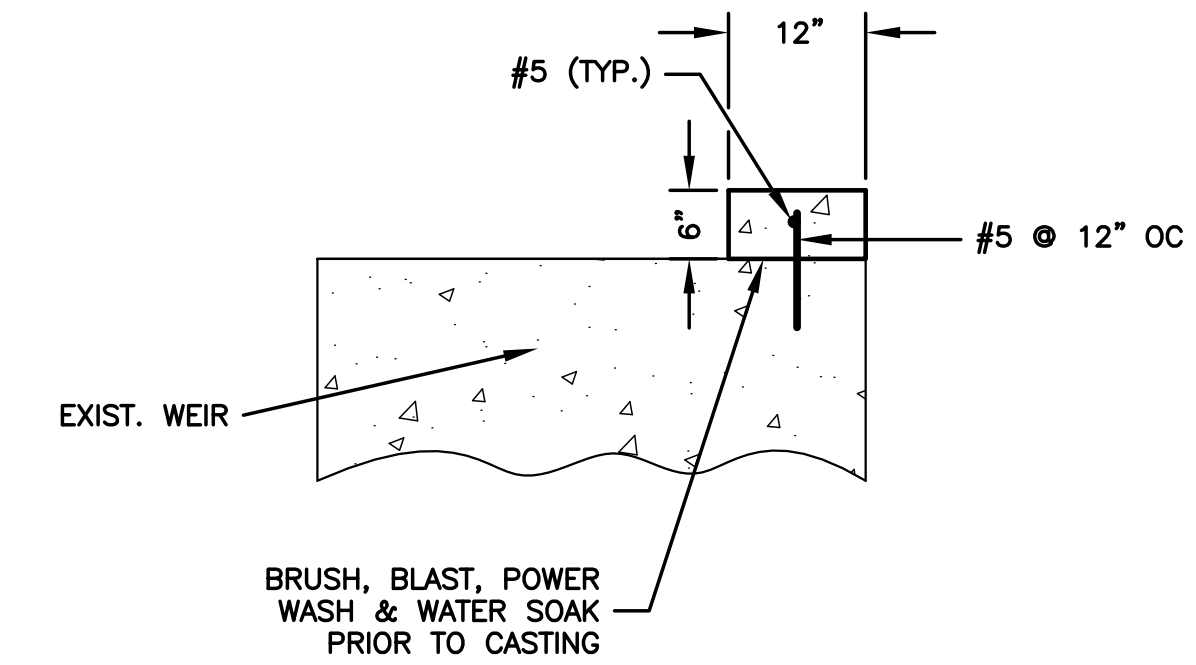
PLAN
NOT TO SCALE

CONCRETE: GRADE 4.0 (A.E.) CONCRETE SHALL BE USED THROUGHOUT.
REINFORCING STEEL; $f_y=60,000$ PSI
ALL CONCRETE EDGES SHALL HAVE 3/4" CHAMFER.

REINFORCING: ALL REINFORCING STEEL SHALL CONFORM TO ASTM A615, GRADE 60. ALL DIMENSIONS RELATIVE TO REINFORCING STEEL SHALL BE TO CENTERLINE OF BAR UNLESS OTHERWISE NOTED.



SECTION A-A
NOT TO SCALE



SECTION B-B
NOT TO SCALE

©2013 MKEC Engineering All Rights Reserved www.mkec.com
These drawings and their contents, including, but not limited to, all concepts, designs, & ideas are the exclusive property of MKEC Engineering (MKEC), and may not be used or reproduced in any way without the express consent of MKEC.

WEIR DETAIL

PROJECT NO.	468-84887	
DATE	JULY 2013	
SCALE	NTS	
DESIGNED	DRAWN	CHECKED
SPE	BKS	GJA

#	---	###/###/###
NO.	REVISION	DATE

SHEET NO.

J:\PROJECTS\2013\1301010385_COW BAY COUNTRY DEVELOPMENTS-CIVIL\CAD\GRD1\3385 WEIR DETAIL.DWG