

FINAL PLAT

KRUG SOUTH ADDITION

AN ADDITION TO WICHITA, SEDGWICK COUNTY, KANSAS

| LINE | LENGTH | BEARING |
|------|--------|-------------|
| L1 | 218.52 | N12°28'30"W |
| L2 | 107.16 | N12°28'30"W |
| L3 | 130.23 | N07°28'42"W |
| L4 | 159.23 | S39°07'41"W |
| L5 | 40.00 | N80°18'03"E |
| L6 | 80.00 | N33°05'39"E |
| L7 | 40.37 | N13°28'00"E |
| L8 | 27.99 | N71°45'50"E |
| L9 | 20.41 | N07°32'55"W |
| L10 | 72.63 | S43°19'03"W |
| L11 | 93.04 | S21°07'37"W |
| L12 | 23.42 | S86°19'48"E |
| L13 | 41.15 | N07°41'34"E |
| L14 | 59.42 | N49°35'40"E |
| L15 | 40.00 | N30°39'25"E |
| L16 | 91.60 | N17°48'12"E |
| L17 | 178.55 | S53°32'53"W |

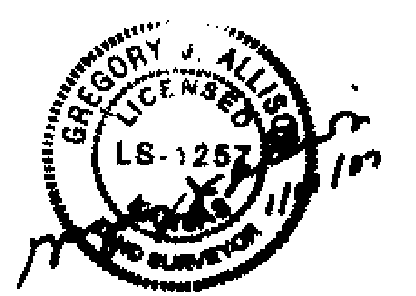
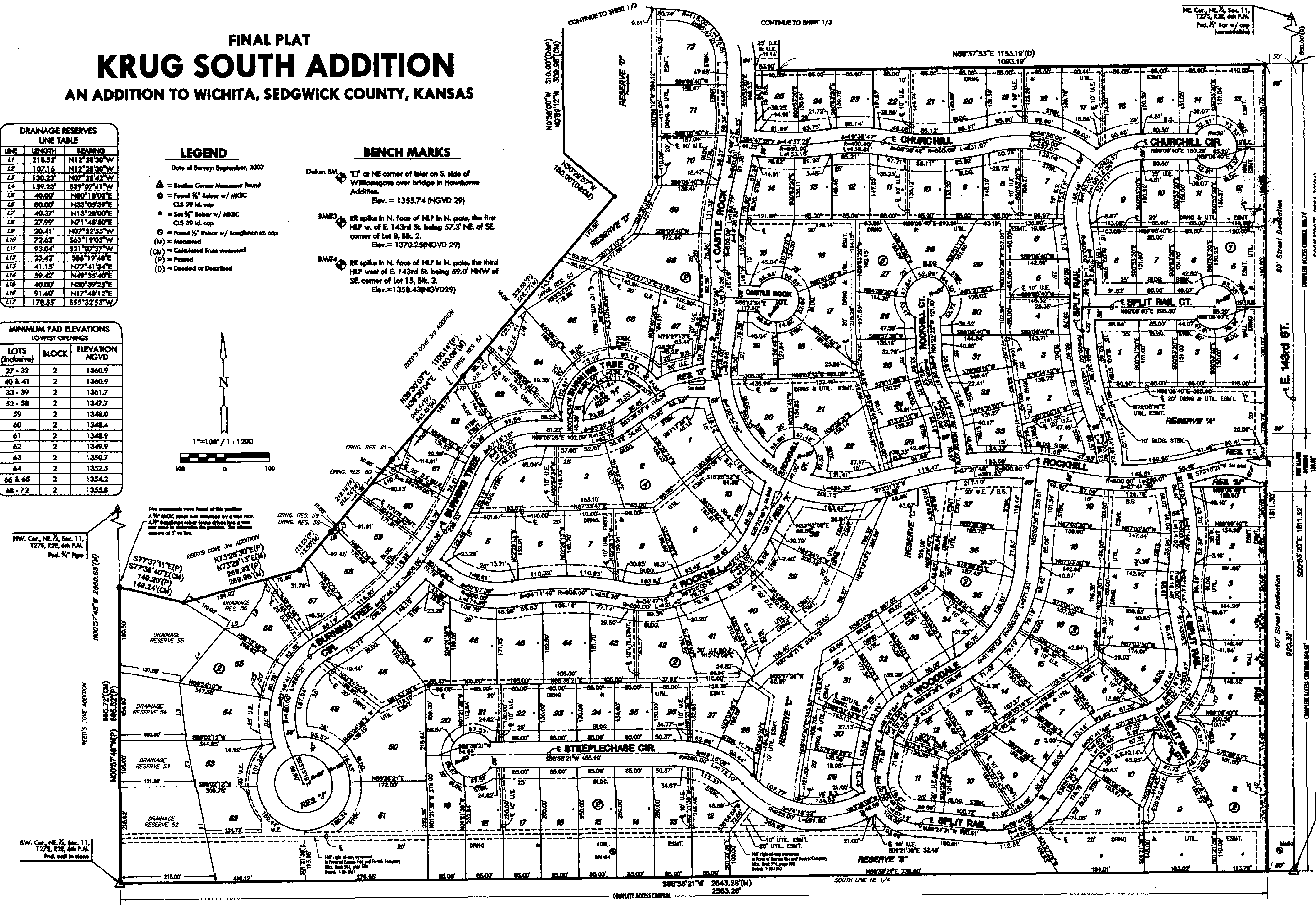
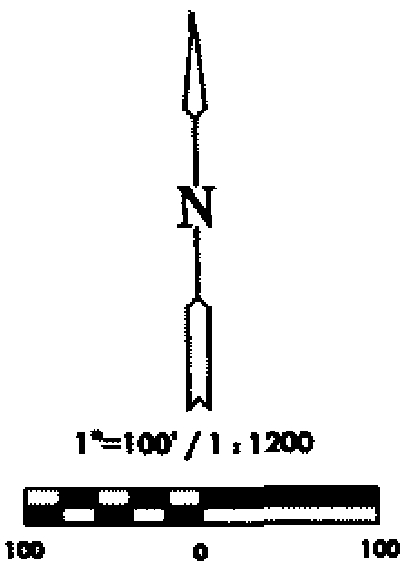
| LOTS (inclusive) | BLOCK | ELEVATION NGVD |
|------------------|-------|----------------|
| 27 - 32 | 2 | 1360.9 |
| 40 & 41 | 2 | 1360.9 |
| 33 - 39 | 2 | 1361.7 |
| 52 - 58 | 2 | 1347.7 |
| 59 | 2 | 1348.0 |
| 60 | 2 | 1348.4 |
| 61 | 2 | 1348.9 |
| 62 | 2 | 1349.9 |
| 63 | 2 | 1350.7 |
| 64 | 2 | 1352.5 |
| 66 & 65 | 2 | 1354.2 |
| 68 - 72 | 2 | 1355.8 |

LEGEND

- Date of Survey: September, 2007
- ▲ = Section Corner Monument Found
 - = Found 3/4" Rebar w/ MKBC CLS 39 Id. cap
 - = Set 3/4" Rebar w/ MKBC CLS 39 Id. cap
 - = Found 3/4" Rebar w/ Boughtman Id. cap
 - (M) = Measured
 - (CM) = Calculated from measured
 - (P) = Platted
 - (D) = Deeded or Described

BENCH MARKS

- Datum: NAD 83
- BM 104: "T" at NE corner of inlet on S. side of Willomgate over bridge in Howthome Addition. Elev. = 1355.74 (NGVD 29)
 - BM 103: RR spike in N. face of HLP in N. pole, the first HLP w. of E. 143rd St. being 57.3' NE of SE corner of Lot 8, Blk. 2. Elev. = 1370.25 (NGVD 29)
 - BM 104: RR spike in N. face of HLP in N. pole, the third HLP west of E. 143rd St. being 59.0' NNW of SE corner of Lot 15, Blk. 2. Elev. = 1358.43 (NGVD 29)



SE. Cor., NE 1/4, Sec. 11, T27S, R28E, 4th P.M. Plat. 1/27 bear w/ PEC cap