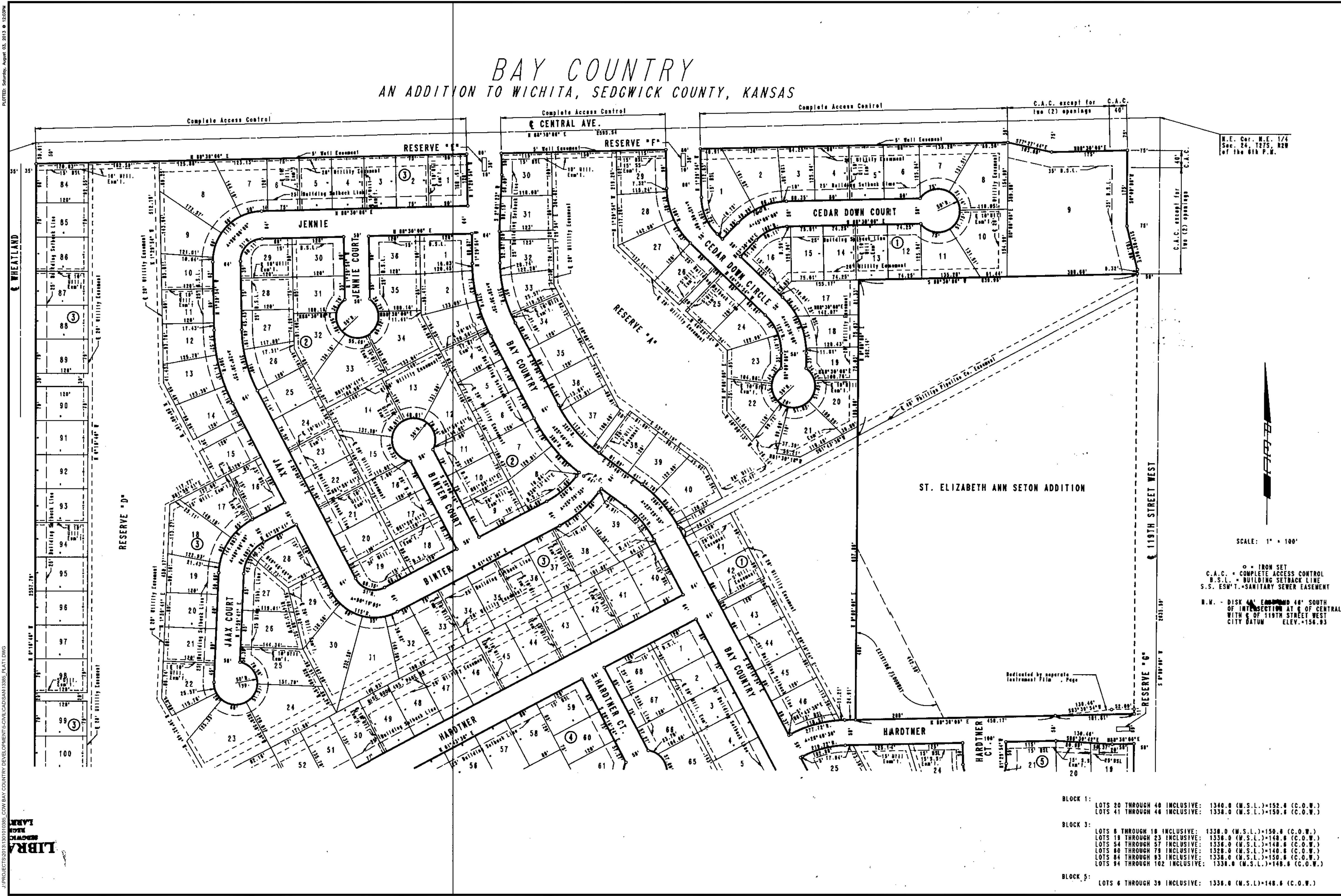


BAY COUNTRY

AN ADDITION TO WICHITA, SEDGWICK COUNTY, KANSAS



N.E. Cor. N.E. 1/4
Sec. 24, T27S, R2W
of the 6th P.M.

SCALE: 1" = 100'

○ = IRON SET
C.A.C. = COMPLETE ACCESS CONTROL
B.S.L. = BUILDING SETBACK LINE
S.S. ESM'T. = SANITARY SEWER EASEMENT

N.W. - DISK AND EMBROID 40' SOUTH
OF INTERSECTION AT E OF CENTRAL
WITH W OF 119TH STREET WEST
CITY DATUM ELEV. = 156.93

SANITARY SEWER PLANS FOR

BAY COUNTRY ADDITION

PHASE 1

FINAL PLAT 1

PROJECT NO.	468-84890
DATE	AUGUST 2013
SCALE	AS NOTED
DESIGNED	MKEC
DRAWN	MKEC
CHECKED	MKEC
#	###/###
NO.	REVISION DATE

J:\PROJECTS\2013\1301010386_COW BAY COUNTRY DEVELOPMENTS-CIVIL\CAD\SAN\1386_PLAT1.DWG
LIBRA
MKEC
MKEC