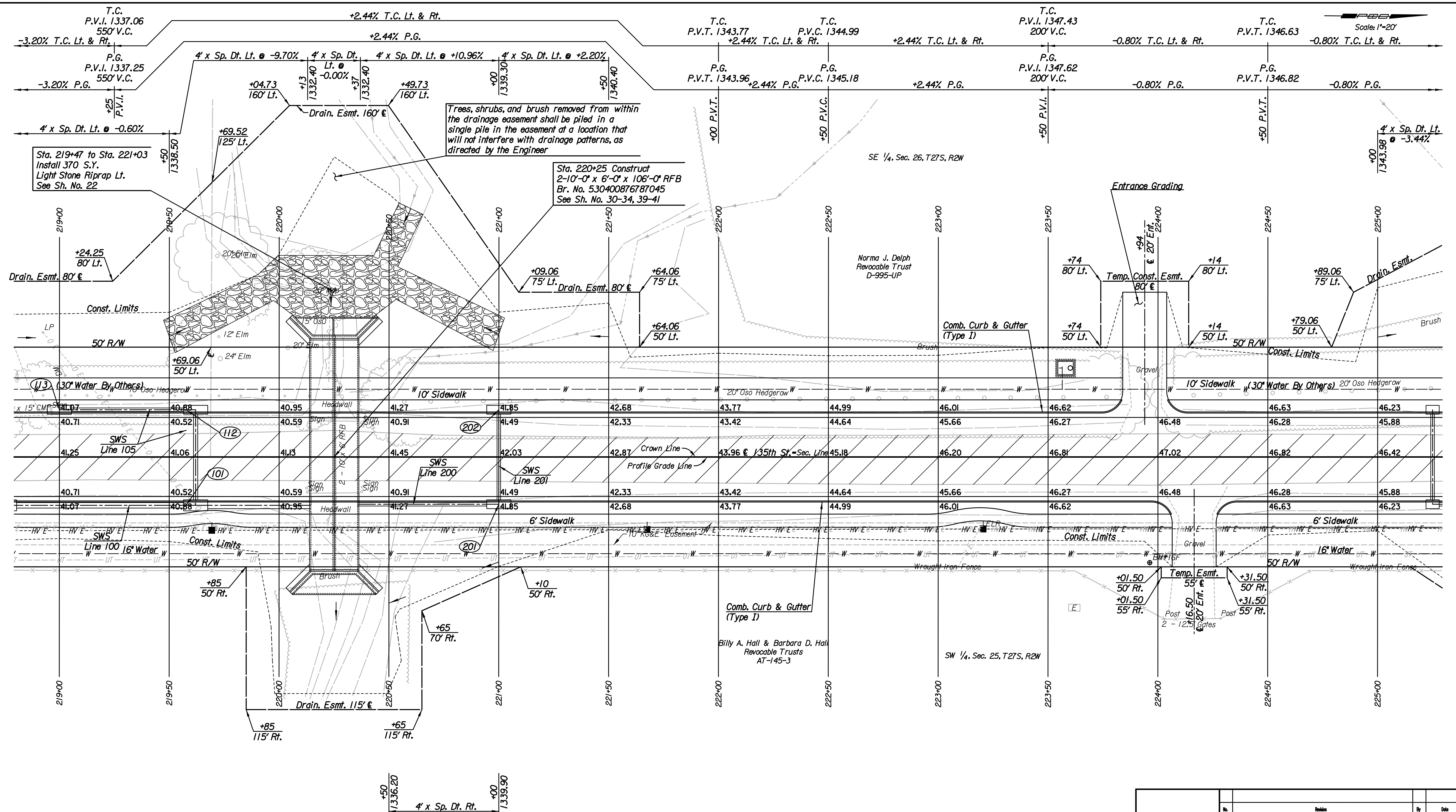


Plotted By: svb Date: 5/16/2013 11:27:27 AM
 FILE: I:\2010\10281\Plan\10281-PL219.dgn



REMOVAL OF EXISTING STRUCTURES *		
STATION	SIDE	ITEM
219+85	Rt.	125 L.F. Wrought Iron Fence (North)
220+13	Lt.	Sign
220+13	Rt.	2-Signs
220+25	€	2-10'x5' RCB & Wingwalls
220+38	Lt.	2-Signs
220+38	Rt.	2-Signs

* For Information Only

BM*16F Set "A" Post E side 135th St. W., N of Kellogg
 300' S of *1151 S. 135th St. W., 15' E of power line N-S.
 135th St. W. € Sta. 223+96.28, 48.12' Rt. Elev. 1347.68

Utilities
 Gas Kansas Gas Service
 Power Westar Energy
 Telephone AT&T

Note: All trees removed from within the construction limits shall be paid for as "Site Clearing".

No.	Revision	By	Date
135TH ST.			
PLAN			
STA. 219+00 TO STA. 225+00			
GARY JANZEN, P.E.-CITY ENGINEER CITY OF WICHITA PROJECT NO. 472-84915			
PEC PROFESSIONAL ENGINEERING CONSULTANTS, P.A. 303 SOUTH TOPEKA WICHITA, KS 67202 316-262-2691 www.pec1.com			
Designed by	RJS	Job No.	10281
Drawn by	JDT	Date	JAN, 2013
			Sh. 5 of 83