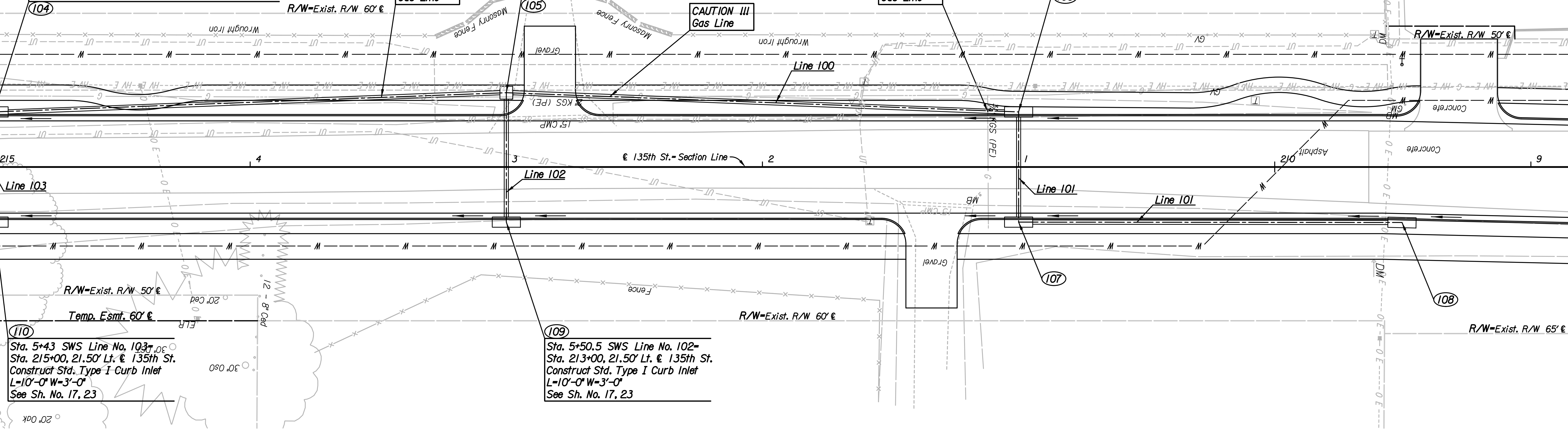


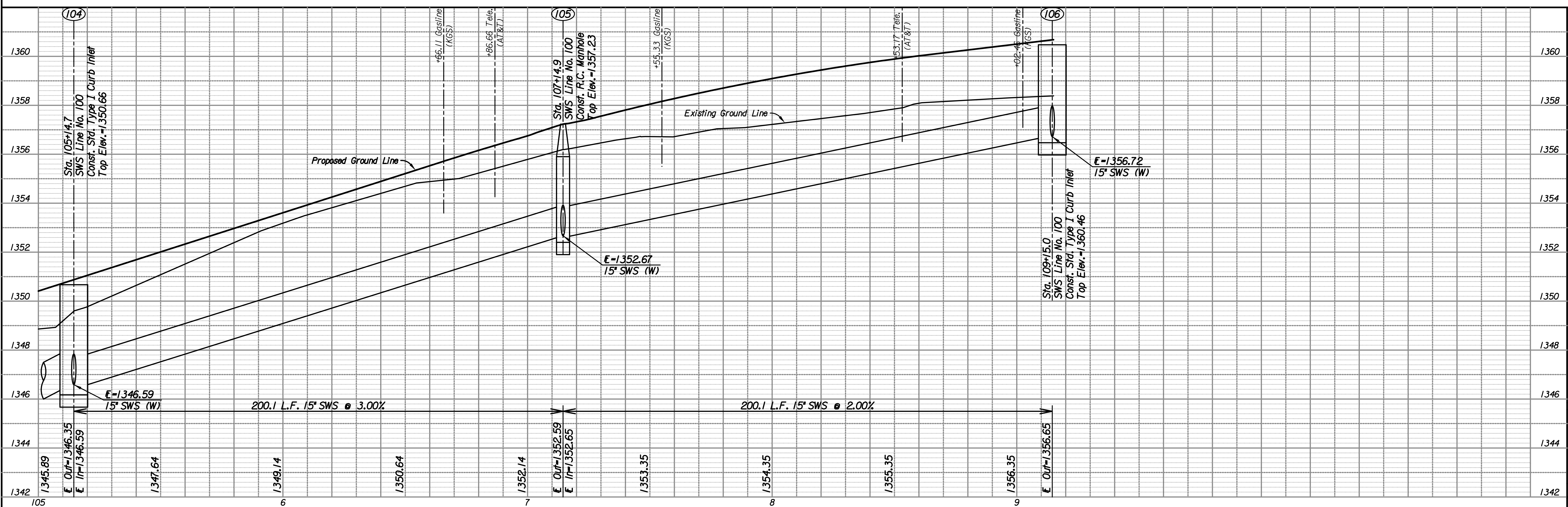
Sta. 105+14.7 SWS Line No. 100-
 Sta. 5+00 SWS Line No. 103-
 Sta. 215+00, 21.50' Rt. @ 135th St.
 Construct Std. Type I Curb Inlet
 L=10'-0" W=3'-0"
 Install 15"x200.1' SWS (RCP, ACSP, PEP, or PVC) (S)
 Install 15"x43' SWS (RCP) (W)
 See Sh. No. 17, 23

Sta. 107+14.9 SWS Line No. 100-
 Sta. 5+00 SWS Line No. 102
 Sta. 213+00, 29.00' Rt. @ 135th St.
 Construct R.C. Manhole
 L=4'-0" W=4'-0" H=5'-4" H=1'-4"
 Install 15"x200.1' SWS (RCP, ACSP, PEP, or PVC) (S)
 Install 15"x50.5' SWS (RCP) (W)
 See Sh. No. 19, 20, 21, 23

Sta. 109+15.0 SWS Line No. 100-
 Sta. 5+00 SWS Line No. 101-
 Sta. 211+00, 21.50' Rt. @ 135th St.
 Construct Std. Type I Curb Inlet
 L=10'-0" W=3'-0"
 Install 15"x43' SWS (RCP) (W)
 See Sh. No. 17, 23



Scale: 1"=20'



Plotted By: sub Date: 2/25/2013 11:26:36 AM
 FILE: I:\2010\10281\SWS Profile\10281-swpp-100-2.dgn

135TH STREET
 LINE NO. 100
STORM SEWER PLAN

PROFESSIONAL ENGINEERING CONSULTANTS, P.A.
 303 SOUTH DOCKA WICHITA, KS 67202
 316-262-2891 www.pec1.com

Designed by RJS
 Drawn by CP
 Job No. 10281
 Date Jan., 2013
 C.O.W. PROJ. NO. 472-84815