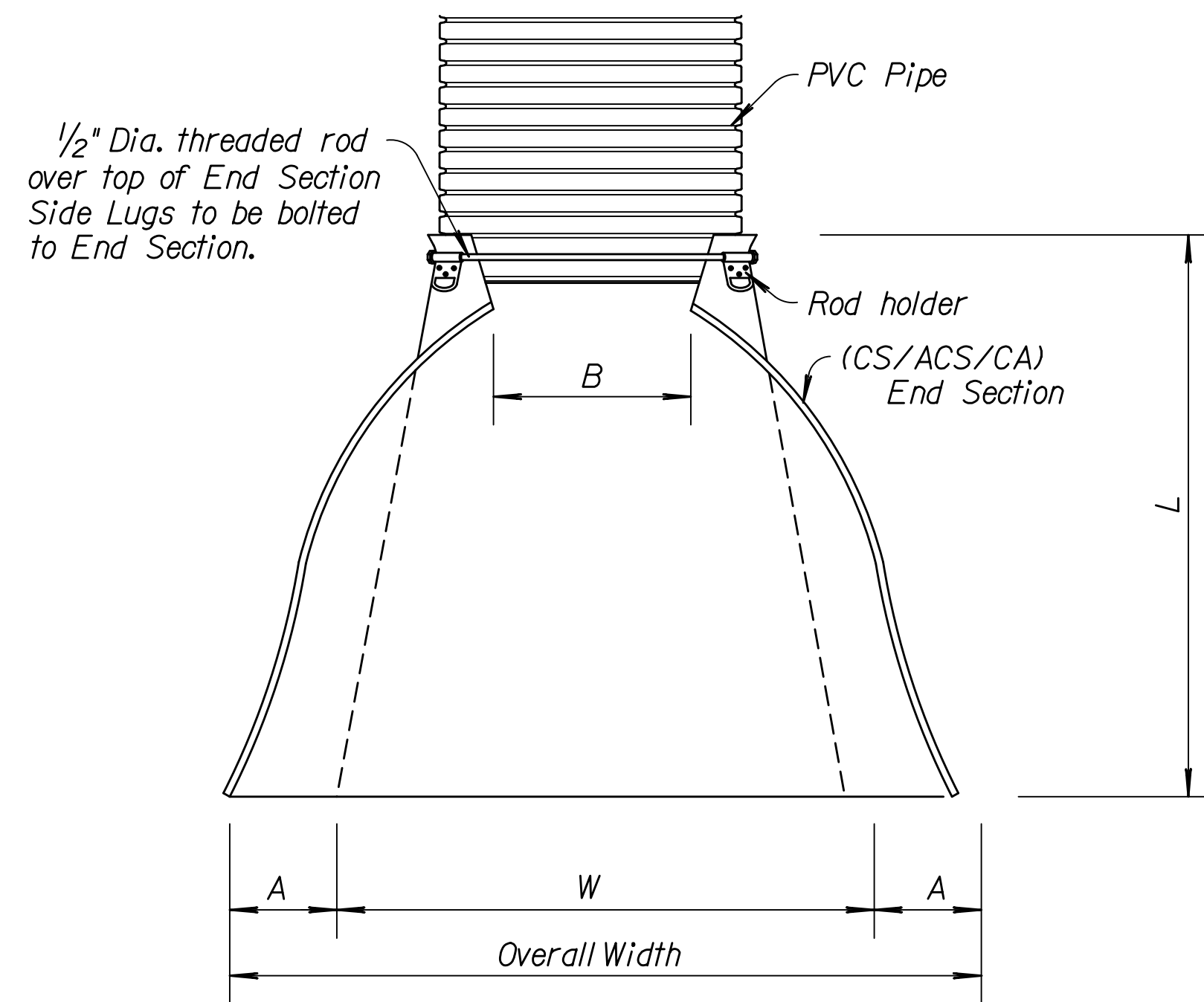
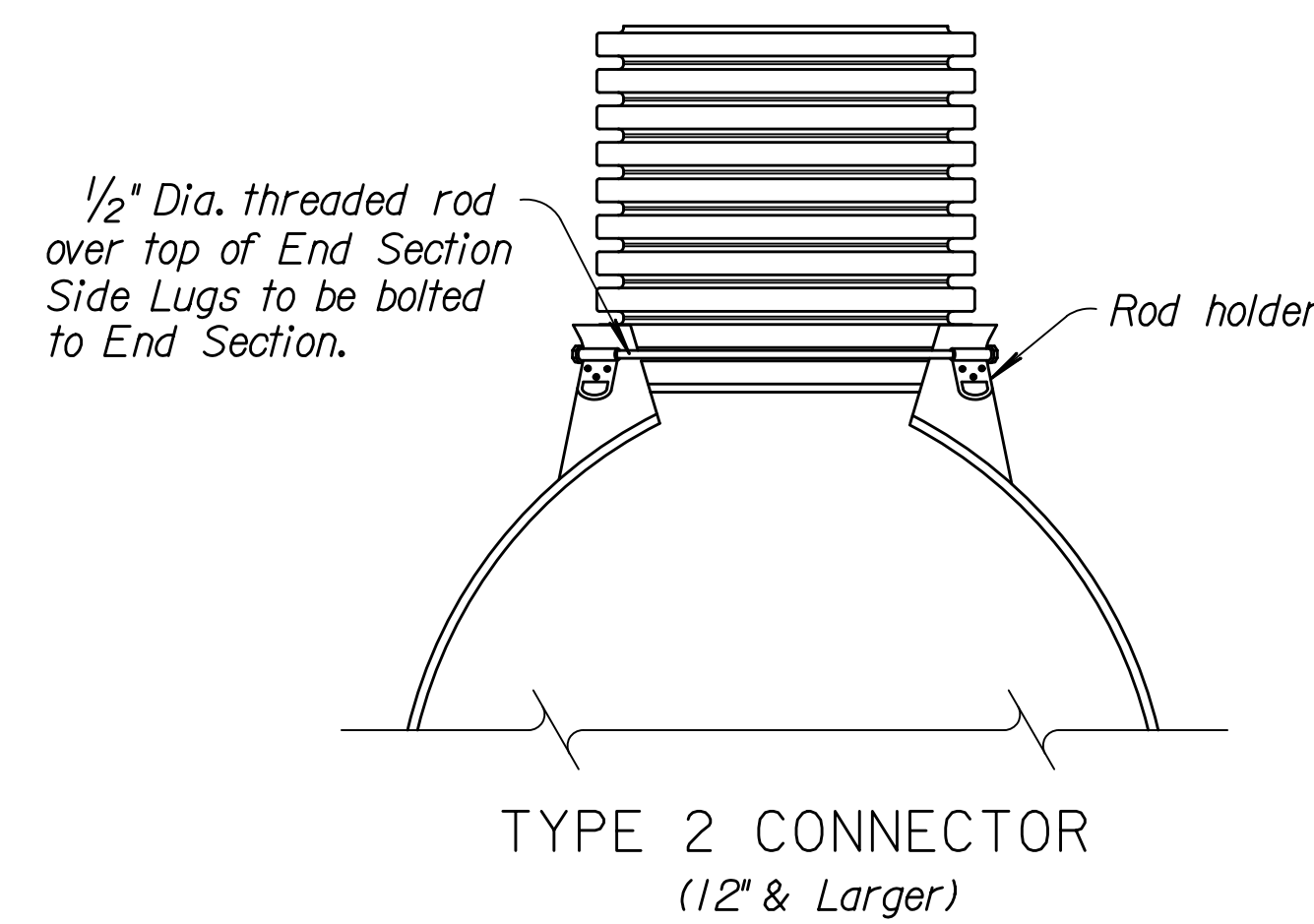


STATE	PROJECT NO.	YEAR	SHEET NO.	TOTAL SHEETS
KANSAS	472-84915	2013	28	83

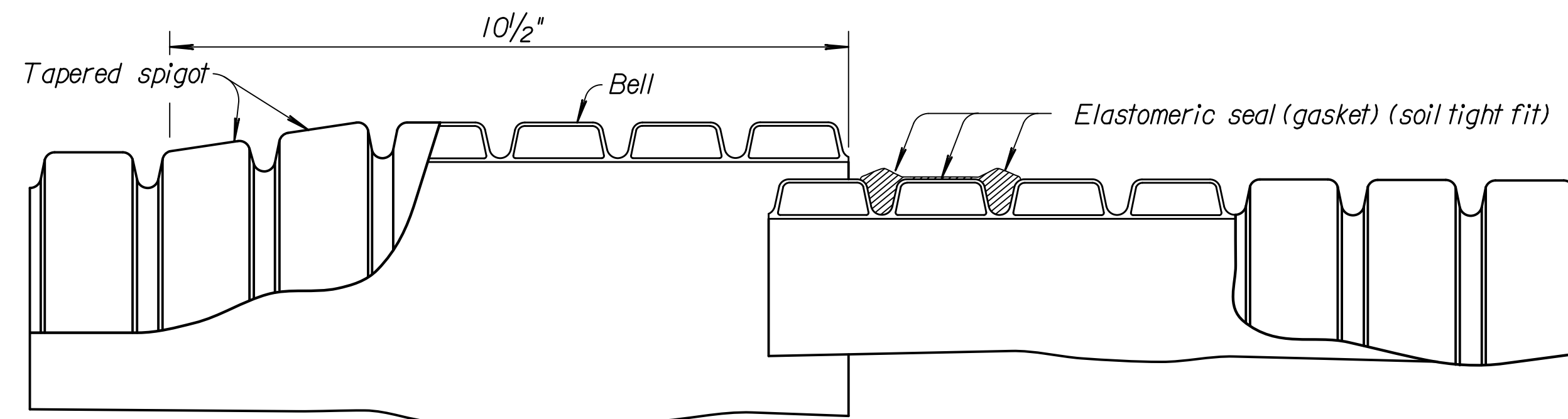
Note to Designer: KDOT Pipe Policy provides guidance in identifying the prohibited and/or restricted uses of CSP, ACSP, PEP, PVCP, CAP & RCP. Provide end sections of the same type and coating as the pipe. Exceptions to this are noted in the Standard Specifications. Refer to the KDOT Design Manual, Volume I (Part C), Road Section, Elements of Drainage & Culvert Design for structural pipe design information which includes: corrugations, sizes, gauges, maximum/minimum fill heights and classes of pipe.



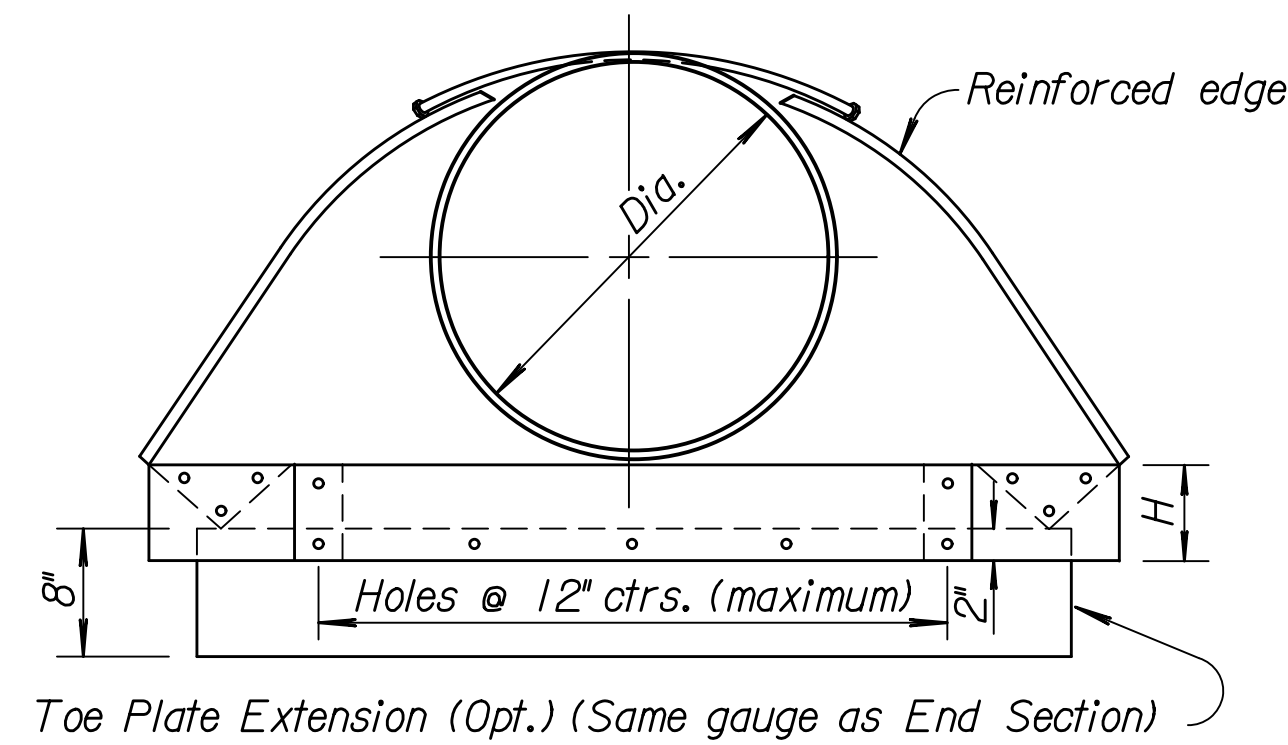
PLAN
(Illustrated with Type 2 Connector on 12" or larger)



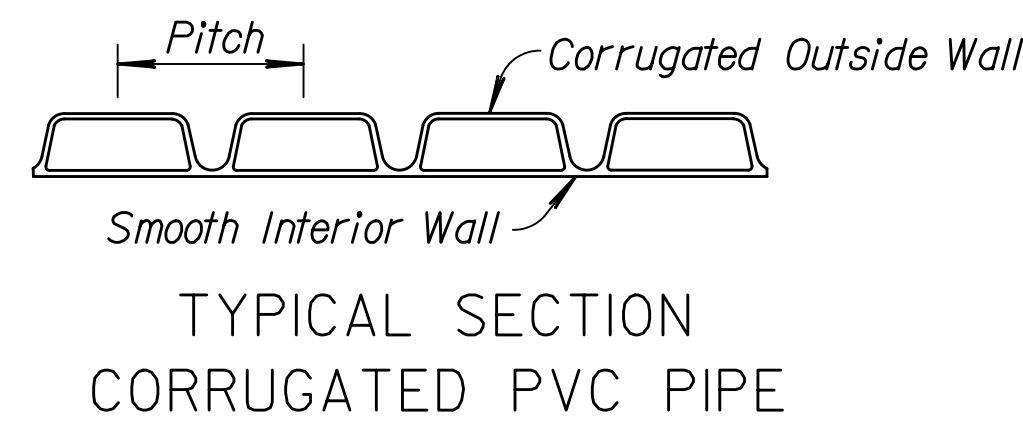
TYPE 2 CONNECTOR
(12" & Larger)



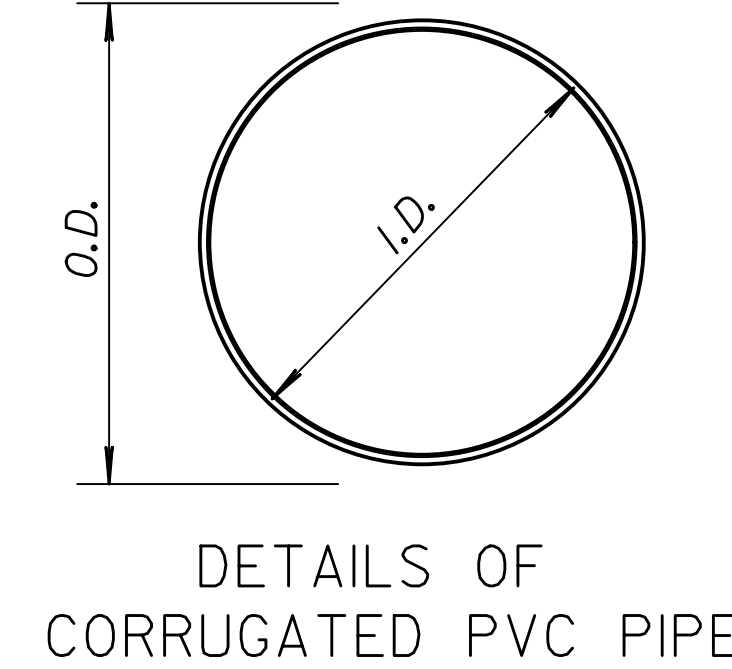
PVC BELL & SPIGOT CONNECTION
SOIL TIGHT JOINT



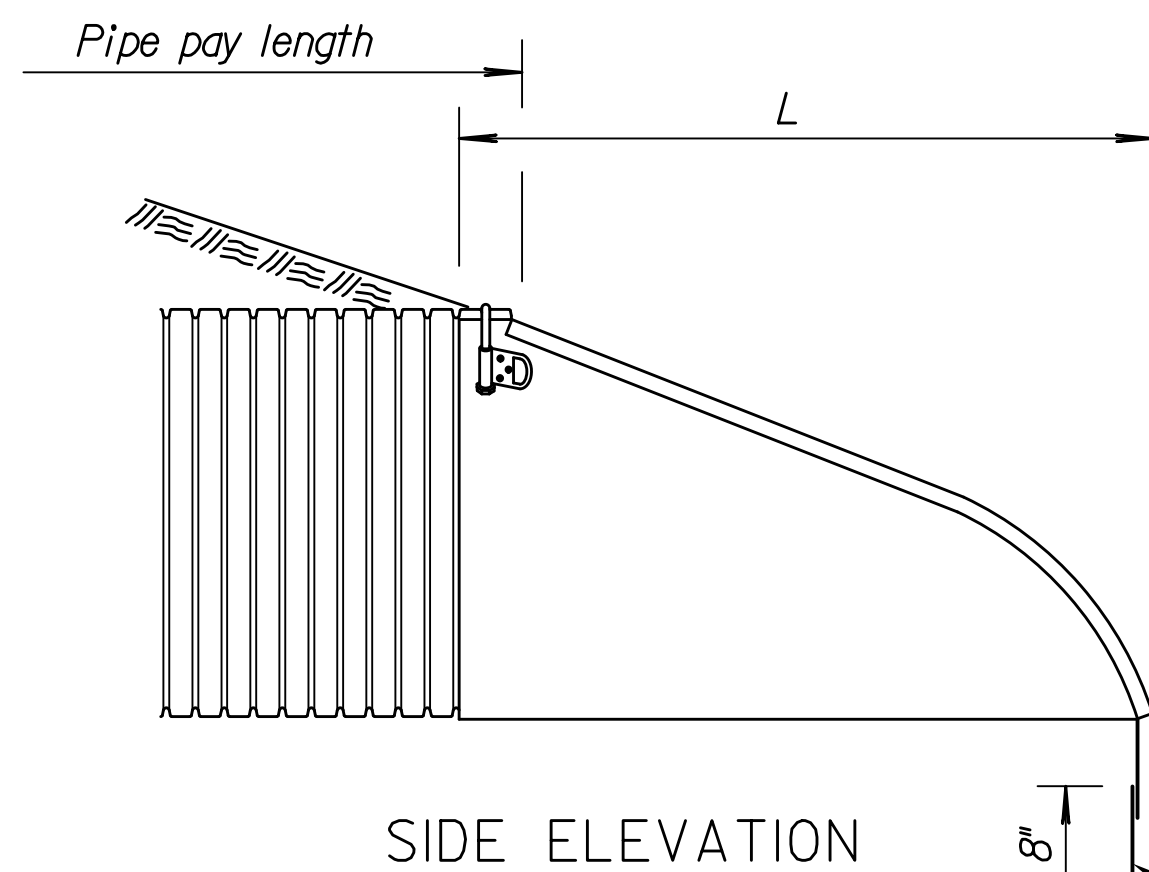
FRONT ELEVATION



TYPICAL SECTION
CORRUGATED PVC PIPE



DETAILS OF
CORRUGATED PVC PIPE



SIDE ELEVATION

☉ Toe plate extensions where specified, to be punched to match holes in apron lip and bolted with 3/8" dia. bolts. The length of toe plate to be as follows:
 W + 10" for 12" to 30" diameter pipe inclusive.
 W + 20" for 36" to 60" diameter pipe inclusive.

GENERAL NOTES

The culvert type shall meet the KDOT Pipe Policy & Standard Specifications.

The size of pipe designated on the plan shall be the nominal inside diameter of a two wall corrugated PVC pipe.

PVC pipe shall be joined with an integral bell gasket joint and Flexible Elastomeric Seals. PVC Pipe is available in lengths of 2.5' to 20'. PVC pipe can be field cut to length, cut through a corrugation valley using a hand or power saw. Gaskets are shipped loose and fitted on spigot/cut pipe end following Manufacturer's installation instructions.

No additional payment shall be made for any gain in length due to the fit of the pipe at connections.

All corrugated PVC pipe, end sections and fittings shall conform with the Standard Specifications.

See Standard Specifications for PVC Pipe bedding and backfill.

Multiple panel end sections shall have lap seams which are to be tightly joined by bolts & nuts. Corner plate and toe plate to be same gauge and material as end section. When required optional toe plate extension shall be overall width less 6" x 8" high.

The End Section attachment to PVC pipe shall be made with a Type 2 Connector for 12" or greater pipe size.

All work and materials required for construction and installation of end section shall be included in the bid item "End Section".

(CS/ACS/CA) END SECTION FOR PVC PIPE							
Pipe Dia. (In.)	Min. Gauge Ends	Dimensions in Inches					Slope
		A 1" Tol.	B (max.)	H (min.)	L (+/- 2") (min.)	W (min.)	
12"	16	6	7	6	21	24	2 1/2:1
15"	16	7	8	6	26	30	2 1/2:1
18"	16	8	10	6	31	36	2 1/2:1
21"	16	9	12	6	36	42	2 1/2:1
24"	16	10	13	6	41	48	2 1/2:1
30"	14	12	16	8	51	60	2 1/2:1
36"	14	14	19	9	60	72	2 1/2:1

Drawn By: svb
 Plotted: 2/5/2013
 File: I:\2010\Standards\10281-rd667b.dgn

KANSAS DEPARTMENT OF TRANSPORTATION		KANSAS DEPARTMENT OF TRANSPORTATION	
METAL END SECTION (TYPE I) for PVC PIPE			
RD667 B			
DESIGNED	6-27-08	APP'D. James O. Brewer	
DESIGN CK.	DETAIL CK.	QUANTITIES	TRACED Bowser
		QUAN. CK.	TRACE CK. King