

# SANITARY SEWER PLANS HAWTHORNE ADDITION ROSEMONT (A) PHASE LAT. 3, MAIN 13 FOUR MILE CREEK PROJECT NO. 468-83509

**O.C.A #744013**

**CITY OF WICHITA, KANSAS**

**NEIL D. CABLE, CITY ENGINEER**

## GENERAL NOTES

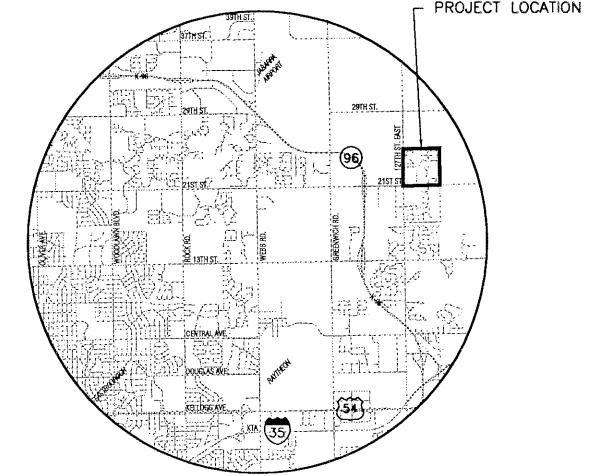
1. THE CONTRACTOR SHALL BE RESPONSIBLE FOR PRESERVING PROPERTY IRONS. THE CONTRACTOR WILL BE REQUIRED TO REESTABLISH ANY PROPERTY IRONS WHICH ARE DAMAGED OR DESTROYED BY HIS CONSTRUCTION OPERATIONS. SUCH IRONS SHALL BE REESTABLISHED BY A LICENSED LAND SURVEYOR IN ACCORDANCE WITH STATE LAWS.
2. EXISTING UTILITIES AND THEIR LOCATIONS, AS SHOWN ON THE PLANS REPRESENT THE BEST INFORMATION OBTAINABLE FOR DESIGN. LOCATION INFORMATION HAS BEEN OBTAINED FROM THE VARIOUS UTILITY COMPANIES AND IS EITHER FROM COMPANY RECORD DRAWINGS OR COMPANY PROVIDED FIELD LOCATIONS. THE PLAN LOCATIONS SHOWN ARE NOT GUARANTEED. ADDITIONAL EXISTING UTILITIES MAY ALSO BE ENCOUNTERED.
3. CONTRACTOR WILL BE REQUIRED TO PROVIDE A MINIMUM ADVANCE NOTICE OF FORTY-EIGHT (48) HOURS TO UTILITY COMPANIES PRIOR TO STARTING ANY EXCAVATION AS FOLLOWS:

KANSAS ONE-CALL 1-800-344-7233  
or 687-2470 (LOCAL WCHITA)

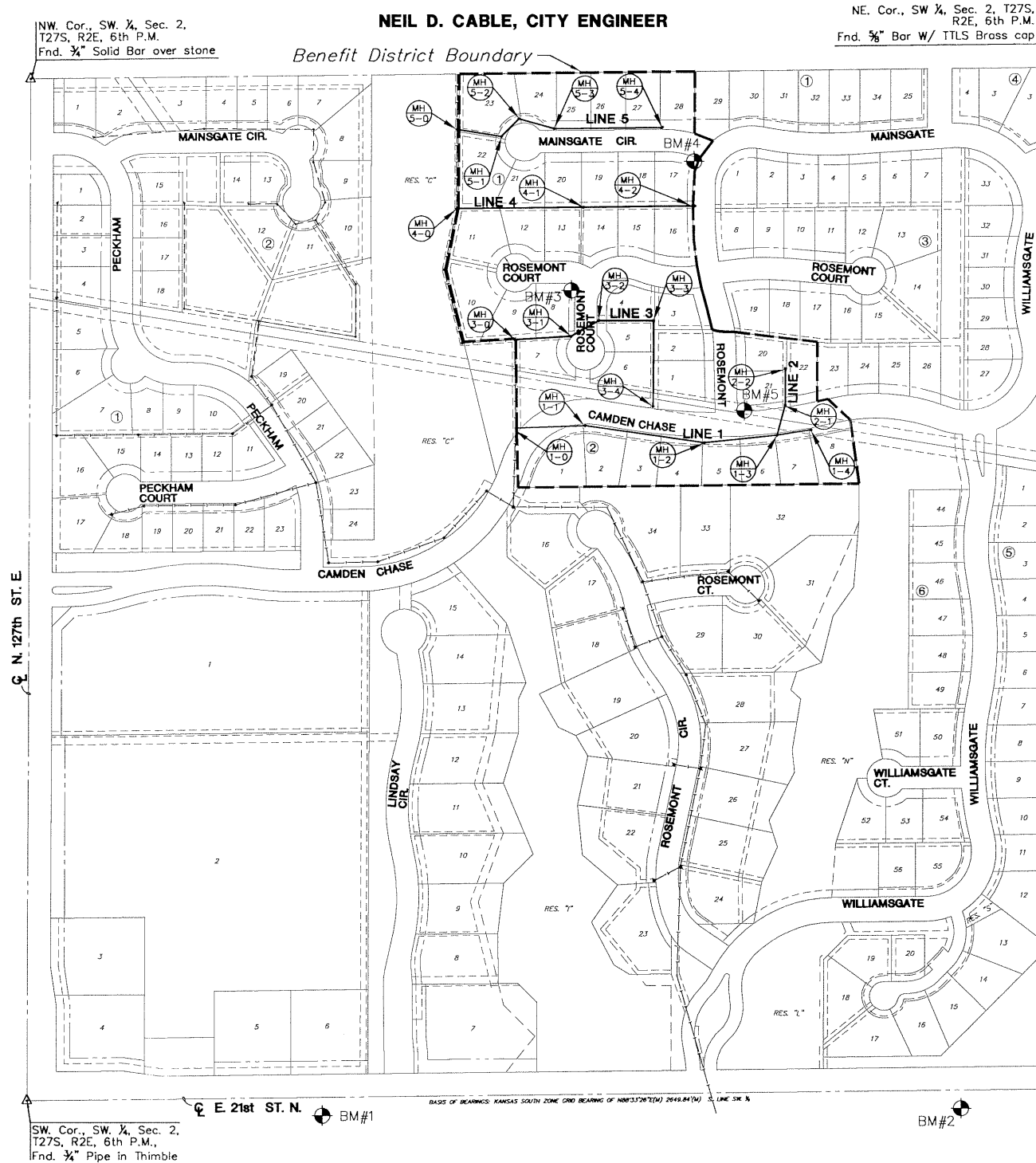
THE CONTRACTOR MUST NOTIFY THE FOLLOWING IN CASE OF AN EMERGENCY:

SOUTHWESTERN BELL TELEPHONE COMPANY 1-800-734-7630  
CABLEVISION 262-0661  
K.G.&E. (GAS & ELECTRIC) 383-8600  
CITY OF WICHITA WATER & SEWER MAINTENANCE 262-6000

4. RUBBLE FROM THE REMOVAL OF MISCELLANEOUS STRUCTURES AND EXCESS EXCAVATION WHICH IS TO BE WASTED SHALL BE DISPOSED OF ON SITES TO BE PROVIDED BY THE CONTRACTOR. THESE SITES SHALL BE APPROVED BY THE ENGINEER AS TO SUITABILITY, APPEARANCE AND SITE LOCATION. LOCATIONS THAT, IN THE OPINION OF THE ENGINEER, WILL LEAVE AN UNSIGHTLY APPEARANCE WILL NOT BE APPROVED. ALL DISPOSAL SITES MUST BE APPROVED BY THE KANSAS DEPARTMENT OF HEALTH AND ENVIRONMENT. MATERIAL EITHER STOCKPILED OR DISPOSED OF IN A FLOOD PLAIN WOULD REQUIRE A KANSAS STATE BOARD OF AGRICULTURE PERMIT. ANY MATERIAL DUMPED IN WATERS OF THE UNITED STATES OR WETLANDS IS SUBJECT TO U.S. CORPS OF ENGINEERS PERMITTING REGULATIONS. ANY MATERIAL BURIED OR STOCKPILED BEYOND APPROVED CONSTRUCTION LIMITS WOULD REQUIRE ADDITIONAL ARCHAEOLOGICAL INVESTIGATIONS UNLESS BURIED IN A PREVIOUSLY APPROVED BORROW LOCATION.
5. COST OF EXCAVATION, HAULING, AND DUMPING OF EXCESS EXCAVATION SHALL BE SUBSIDIARY TO THE PROJECT.
6. A PORTION OF EXCESS EXCAVATED MATERIAL SHALL BE MOUND AROUND MANHOLES WHICH EXTEND MORE THAN ONE (1) FOOT ABOVE THE EXISTING GROUND. SUCH MOUNDS SHALL BE CONSTRUCTED WITH A SIX (6) FOOT DIAMETER FLAT TOP WITH 4 TO 1 SIDE SLOPES DOWN TO THE ORIGINAL GROUND. THE ELEVATION OF THE FLAT TOP OF THE MOUND SHALL BE 0.4 FOOT BELOW THE TOP OF THE MANHOLE.
7. ALL STUBS AND PLUGGED PIPES SHALL BE LOCATED WITH GREEN PLASTIC TAPE IN THE SAME MANNER AS RISERS.
8. PRIOR TO LAYING SEWER LINES USING EXISTING STUBS IN EXISTING MANHOLES, THE CONTRACTOR SHALL EXPOSE AND VERIFY THE ELEVATION, GRADE AND ALIGNMENT OF EXISTING STUBS AND NOTIFY THE ENGINEER OF ANY DEVIATION FROM THE PLAN. WHERE CONNECTION TO AN EXISTING MANHOLE THAT DOES NOT HAVE AN EXISTING STUB OR THE STUB IS UNUSABLE DUE TO ELEVATION GRADE OR ALIGNMENT, THE CONTRACTOR SHALL RESHAPE THE EXISTING MANHOLE INVERT TO PROVIDE SMOOTH FLOW. THE COST OF RESHAPING EXISTING MANHOLE INVERTS IS INCIDENTAL TO THE PROJECT.
9. ALL EXISTING TREES ARE AN IMPORTANT ASSET TO THE DEVELOPER. NO TREE OF ANY SIZE SHALL BE REMOVED UNLESS NOTED OTHERWISE. THE CONTRACTOR SHALL COORDINATE TREE REMOVAL WITH MKEC.
10. EQUIPMENT AND CONSTRUCTION MATERIALS SHALL REMAIN OUT OF AND AWAY FROM TREE DRIFLINES (INCLUDING TREES WITHOUT PROTECTIVE FENCING) SO AS NOT TO COMPACT THE ROOT ZONE OR DAMAGE THE TREE. IF GRADING OCCURS OR CONFLICTS WITHIN THE PROTECTED FENCE AREA UNDER TREE DRIFLINES, REMOVE AS SMALL OF A PORTION OF FENCE AS NECESSARY IN ORDER TO ACCOMPLISH THE WORK. CONSULT WITH ENGINEER BEFORE INITIATING GRADING WORK IN THESE AREAS.
11. ANY TREE THAT MUST HAVE BRANCHES REMOVED SHALL BE TRIMMED WITH A SHARP INSTRUMENT/TOOL THAT IS INTENDED FOR SUCH OPERATIONS. GAIN APPROVAL FROM MKEC BEFORE REMOVING BRANCHES FROM ANY TREE. KNOCKING BRANCHES OFF WITH A BACKHOE OR OTHER SIMILAR MACHINES IS NOT ACCEPTABLE! REFER TO DETAIL SHEET 4.
12. ALL DISTURBED AREAS TO BE SEEDED WITH RYE GRASS AT A RATE OF 200LBS./ ACRE WITHIN 10 DAYS OF CONSTRUCTION.
13. EXCESS EXCAVATION MAY BE WASTED ON SITE IN APPROVED LOCATIONS.
14. CONTRACTOR SHALL MAINTAIN EROSION CONTROL THROUGHOUT CONSTRUCTION. COST SUBSIDIARY TO PROJECT.
15. CONTRACTOR TO PRESERVE EXISTING LANDSCAPING. ANY LANDSCAPED AREAS DISTURBED DUE TO THE SPECIFIED WORK OR CONTRACTOR'S NEGLIGENCE SHALL BE REPLACED WITH MATERIAL OF THE SAME ATTRIBUTES AS EXISTING. COST SUBSIDIARY TO THE BID ITEM FOR BMP.
16. CONTRACTOR TO INSTALL PLASTIC SEWER MANHOLE MARKERS. SEWER DEPARTMENT WILL PROVIDE THE MATERIALS. COST TO INSTALL MARKERS SUBSIDIARY TO MANHOLES.



LOCATION MAP

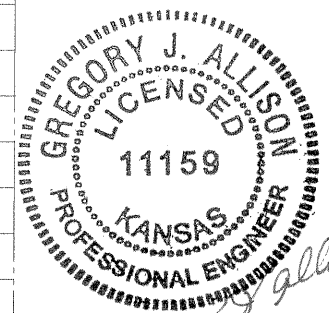


## INDEX TO DRAWINGS

| SHEET NO. | DESCRIPTION |
|-----------|-------------|
| 1         | TITLE SHEET |
| 2-3       | DETAILS     |
| 4-7       | LINE 1 - 5  |
| 8-9       | BMP DETAILS |
| 10-12     | FINAL PLATS |

## BENCHMARK

- BM#1 RR SPIKE IN NORTH FACE 4TH PP EAST OF 127TH ST. E. ON S. SIDE 21ST ST. N., 770'+/- E., & 48'+/- S. OF NW COR SEC 11, T 27 S, R 2 E. ELEV. = 1366.96'
- BM#2 RR SPIKE N. FACE OF PP W. OF N. 1/2 COR ON S. SIDE 21ST ST. N., 218'+/- W. AND 48'+/- S. OF N. 1/2 COR SEC 11, T 27 S, R 2 E. ELEV. = 1357.15'
- BM#3 T-POST SET IN GROUND 5' WEST AND 5' SOUTH OF THE NORTHEAST CORNER OF LOT 8, BLOCK 1, HAWTHORNE SECOND ADDITION. ELEV=1367.84
- BM#4 T-POST SET IN GROUND 5' SOUTH AND 5' WEST OF NE CORNER LOT 17, BLOCK 1, HAWTHORNE SECOND ADDITION. ELEV=1373.35
- BM#5 T-POST SET IN GROUND 5' EAST OF THE BLOCK CORNER ON THE NE INTERSECTION CORNER OF CAMDEN CHASE AND ROSEMONT. ELEV.=1369.83



*Gregory J. Allison*  
10/11/03



**HAWTHORNE ADDITION  
ROSEMONT (A) PHASE**  
PROJECT NAME

**SANITARY SEWER PLANS**  
SHEET TITLE

|                |           |             |
|----------------|-----------|-------------|
| ASH            | JAS       | GJA         |
| DESIGN BY:     | DRAWN BY: | CHECKED BY: |
| SEPTEMBER 2003 | 02167     | 1 / 12      |
| DATE           | JOB NO.   | SHEET/OF    |