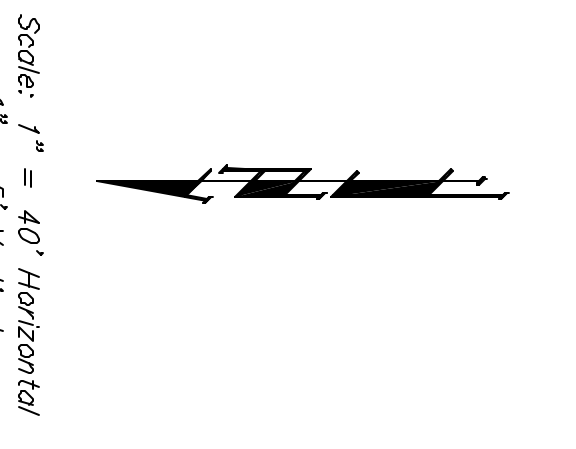
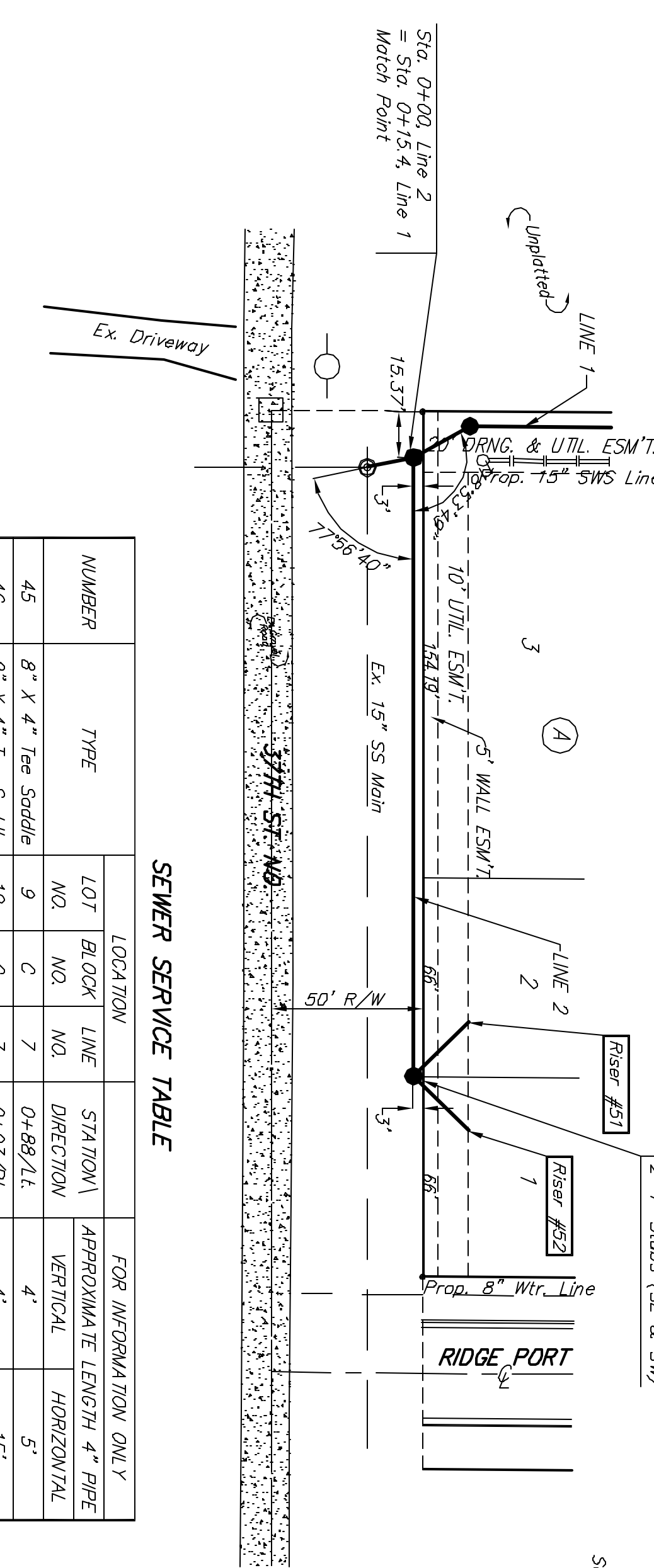
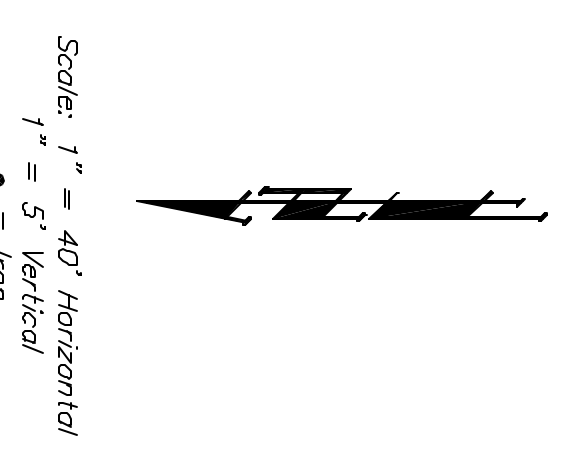
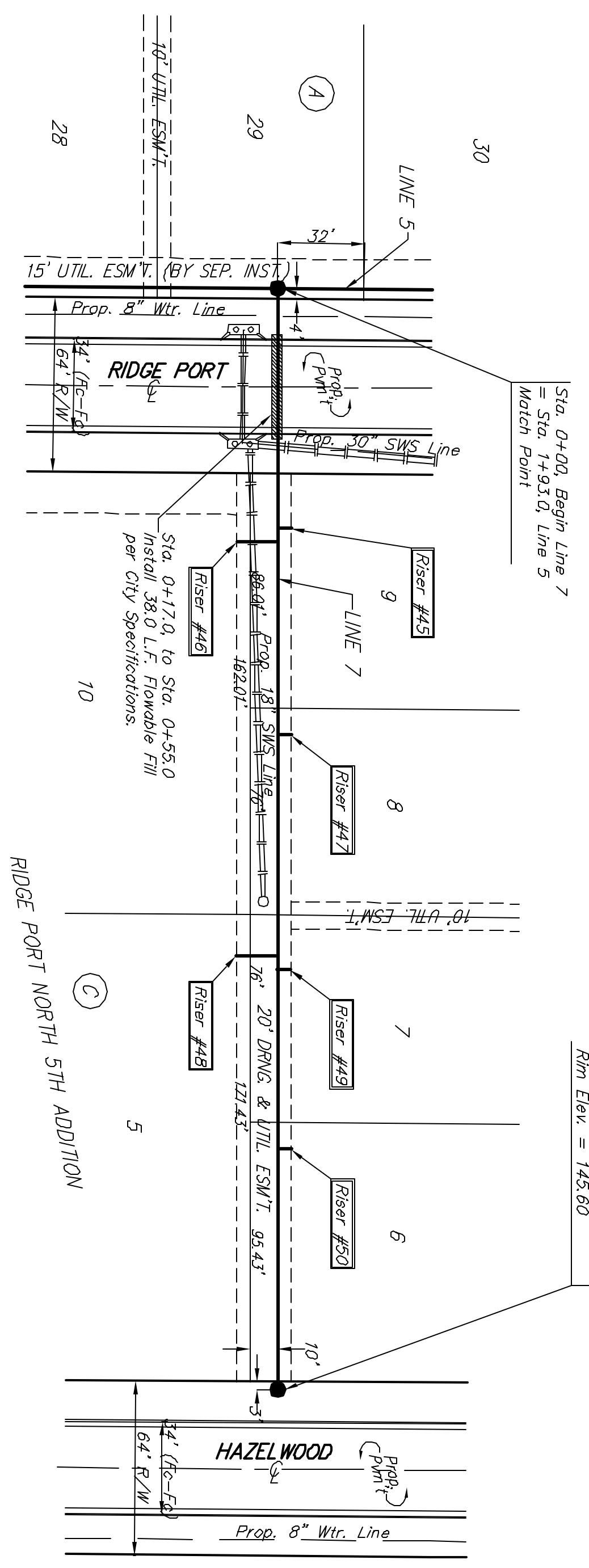


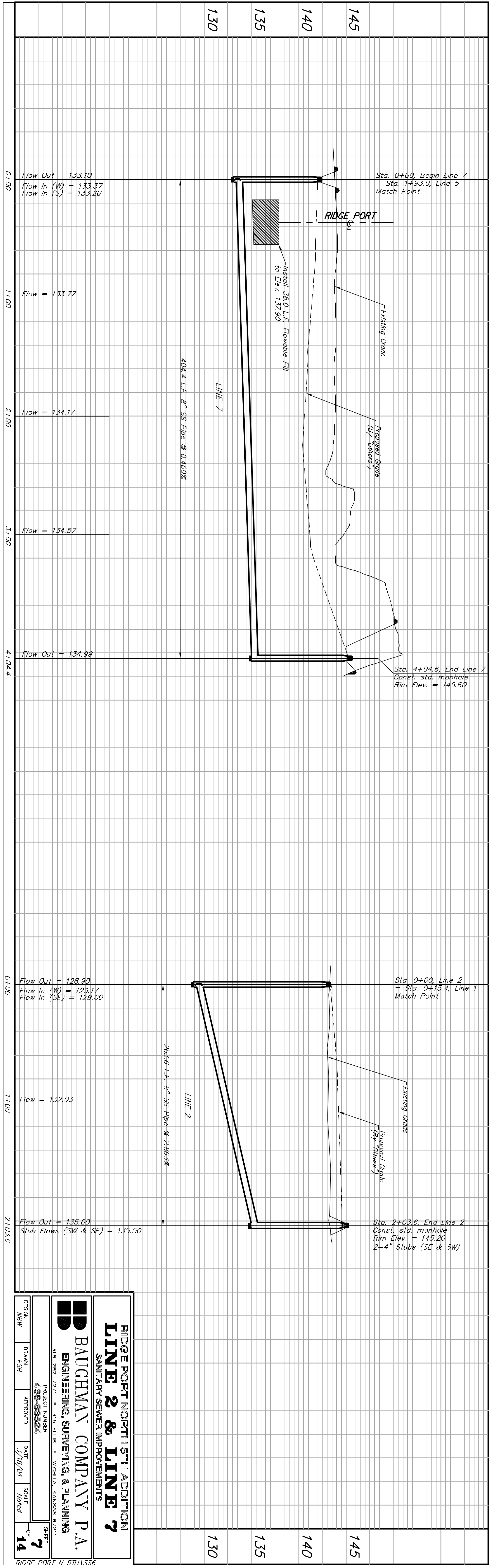
BENCHMARK:  
 "□" ON HUBBARD OF R.C.B.C.  
 73' W. OF SE COR. SE1/4, SEC. 28  
 TWP. 26-S, R-1-W  
 ELEV. = 144.22 CITY DATUM  
 804 STEP BENCH IN HLR, 15' N. &  
 40' E. OF THE INTERSECTION OF 34TH ST. N.  
 AND EISENHOWER  
 ELEV. = 144.00 CITY DATUM



SEWER SERVICE TABLE

NUMBER	TYPE	LOCATION		STA. TO W/	DIRECTION	FOR INFORMATION ONLY	
		LOT NO.	LINE NO.			APPROXIMATE LENGTH	PIPE VERTICAL
45	8" X 4" Tee Saddle	9	C	0+88.1L	4'	5'	
46	8" X 4" Tee Saddle	10	C	0+93.7R	4'	15'	
47	8" X 4" Tee Saddle	8	C	1+64.1L	4'	5'	
48	8" X 4" Tee Saddle	5	C	2+45.7R	4'	15'	
49	8" X 4" Tee Saddle	7	C	2+50.1L	4'	5'	
50	8" X 4" Tee Saddle	6	C	3+11.1L	4'	5'	
51	4" Stub w/ Riser	2	A	2+03.6/1L	6"	26"	
52	4" Stub w/ Riser	1	A	2+03.6/1L	6"	26"	

NOTE: Vertical Riser Pipe shall be extended to 2" minimum above ground water elevation and 4" maximum below proposed ground elevation. Contractor shall use method B for riser construction. See Detail, Sheet 10.



**RIDGE PORT NORTH 5TH ADDITION  
 LINE 2 & LINE 7  
 SANITARY SEWER IMPROVEMENTS**

**BAUGHMAN COMPANY P.A.**  
 ENGINEERING, SURVEYING, & PLANNING  
 318-282-7271 • 318 ELLIS • WICHITA, KANSAS 67211

PROJECT NUMBER: **488-89524**  
 DESIGN: **MBW** | DRAWN: **CSB** | APPROVED: [Signature] | DATE: **3/19/04** | SCALE: **Noted** | SHEET: **7 OF 14**