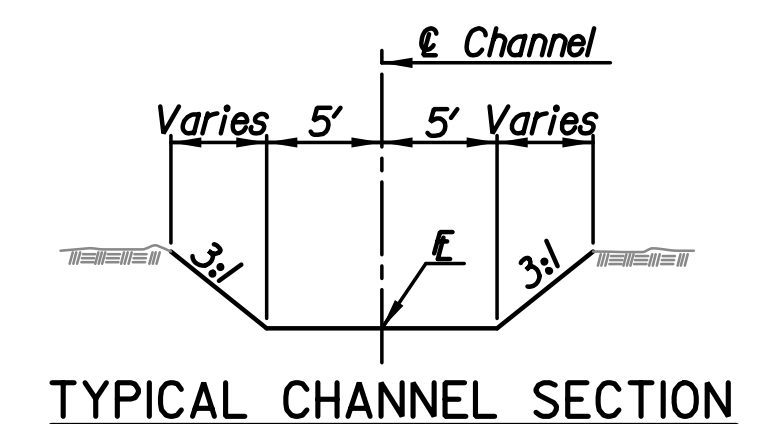


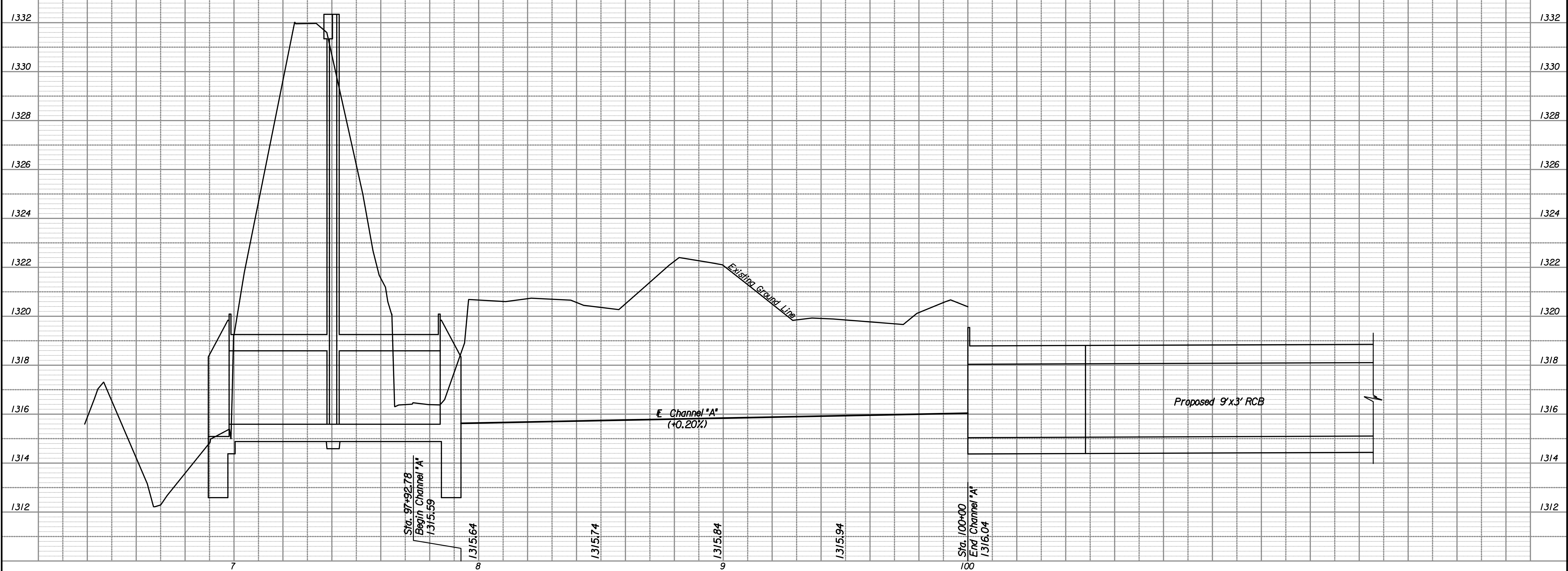
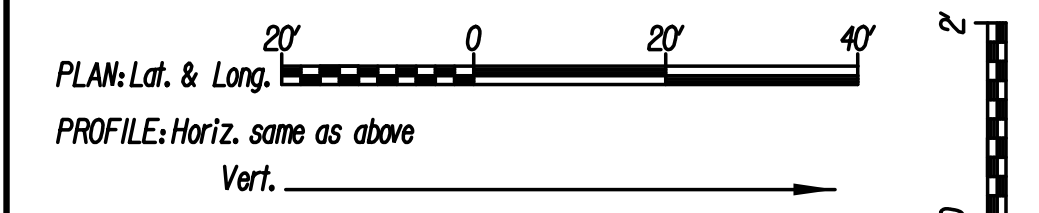
REMOVAL OF EXISTING STRUCTURES *

STATION	SIDE	ITEM
97+32	Cln.	30" CMP w/ Headwalls
98+00	Rt.	36" x 24" CMP
99+12	Rt.	24" CMP

* For Information Only



NOTE: THE CONTRACTOR MUST HAVE SUFFICIENT EQUIPMENT AND MATERIAL ON HAND TO FILL THE LEVEE SLUICE CONSTRUCTION EXCAVATION SHOULD A FLOOD EVENT OCCUR.



CHANNEL "A" PLAN

PEC
 PROFESSIONAL ENGINEERING CONSULTANTS, P.A.
 303 SOUTH DOPEKA, WICHITA, KS 67202
 316-262-2891 www.pec1.com

Job No. 08207
 Date August, 2013

Designed by JPS
 Drawn by SYB

Plotted By: svb Date: 9/9/2013 11:38:48 AM
 FILE: I:\2008\08207\Plan\08207-PL PR Channel A.dgn