

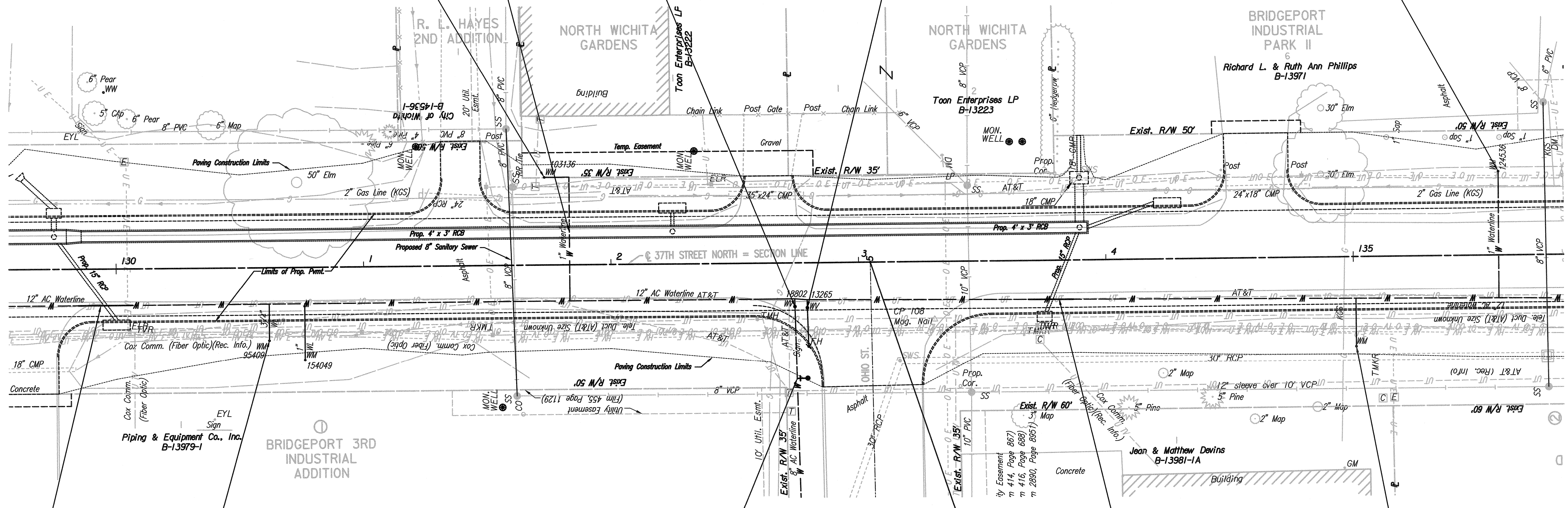
N: 1,709,779.5136, E: 1,652,093.1582
 @ 37th St. N., Sta. 131+73.74, 35.2' Lt.
 Adjust Existing Water Meter Top Elevation
 Existing Top of Box Elev. = 1323.07
 Proposed Top of Box Elev. = 1323.79
 Difference = +0.72'

WATER SERVICE LINE REPLACEMENT NO. 4
 N: 1,709,757.4245, E: 1,652,103.3067
 @ 37th St. N., Sta. 131+83.32, 13.0' Lt.
 Install 1-1" Long Service to facilitate New 4"x3" RCB.
 Bottom of proposed Box = 1316.99
 Provide 12" clear (min.)

N: 1,709,727.5347, E: 1,652,194.3811
 @ 37th St. N., Sta. 132+74.18, 17.6' Rt.
 Adjust Existing Water Valve Box (C.O.W. #18802)
 Existing Top of Box Elev. = 1324.79
 Proposed Top of Box Elev. = 1323.53
 Difference = -1.26'

N: 1,709,727.0534, E: 1,652,199.3900
 @ 37th St. N., Sta. 132+79.18, 18.1' Lt.
 Remove Existing Fire Hydrant, Close Existing
 Valve and Remove Valve Box (Salvage to
 Wichita Water Utilities)
 Install 1-6" CIMJ Plug.

N: 1,709,780.7729, E: 1,652,478.7006
 @ 37th St. N., Sta. 135+58.88, 33.6' Lt.
 Adjust Existing Water Meter Top Elevation
 Existing Top of Box Elev. = 1324.12
 Proposed Top of Box Elev. = 1324.86
 Difference = +0.74'



WATERLINE ADJUSTMENT NO. 14
 See sheet no. C24

N: 1,709,714.2524, E: 1,651,981.9803
 @ 37th St. N., Sta. 130+61.68, 29.3' Rt.
 Adjust Existing Water Meter Top Elevation
 Existing Top of Box Elev. = 1322.99
 Proposed Top of Box Elev. = 1323.32
 Difference = +0.33'

N: 1,709,698.7021, E: 1,652,195.2465
 @ 37th St. N., Sta. 132+74.83, 46.4' Rt.
 FH NO. 3
 Existing 8" Water Main *
 1- 8" x 6" Tapping Sleeve
 1- 6" Tapping Valve
 1- 6" Valve Box
 (To be furnished and set by City of
 Wichita Water Dept.)
 Top Valve Box El. = 1323.6
 4.30' 6" DI CL Pipe (E)
 1- Fire Hydrant
 FH Bury Line El. = 1323.5

@ 37th St. N., Sta. 133+04.75=
 @ Ohio St., Sta. 5+00.00

WATERLINE ADJUSTMENT NO. 15
 See sheet no. C24

N: 1,709,710.7939, E: 1,652,421.2973
 @ 37th St. N., Sta. 135+00.96, 36.0' Rt.
 Adjust Existing Water Meter Top Elevation
 Existing Top of Box Elev. = 1323.55
 Proposed Top of Box Elev. = 1324.11
 Difference = +0.56'

X = Denotes Pipe to be abandoned in place.
 C = Denotes Cap/Plug by the contractor
 (Includes removal of existing pavement and
 replacement with temporary pavement.)

* PRIOR TO BEGINNING CONSTRUCTION, THE CONTRACTOR SHALL EXCAVATE THE
 EXISTING 8" WATERLINE AT @ 37th St., STA. 132+74.83, 46.4' RT. TO VERIFY PIPE
 SIZE, TYPE, FITTINGS, AND HORIZONTAL AND VERTICAL LOCATION. THE CONTRACTOR
 SHALL REPORT HIS FINDINGS TO THE ENGINEER SO THAT ANY NECESSARY PLAN
 MODIFICATIONS CAN BE MADE. ANY ADDITIONAL LABOR OR MATERIALS NECESSARY TO
 COMPLETE THE CONNECTION SHALL BE CONSIDERED SUBSIDIARY TO THE PROJECT.

MICHAEL D. KEYS
 LICENSED
 13944
 9/15/10
 KANSAS
 PROFESSIONAL ENGINEER

No.	Revision	By	Date
37TH STREET NORTH - BROADWAY TO HYDRAULIC WATERLINE MODIFICATIONS MISCELLANEOUS ADJUSTMENT PLANS 130+00 to 135+70			
GARY JANZEN, P.E. - CITY ENGINEER CITY OF WICHITA PROJECT NO. 448-90581			
PEC PROFESSIONAL ENGINEERING CONSULTANTS, P.A. 303 SOUTH TOPEKA WICHITA, KS 67202 316-262-2691 www.pec1.com			
Designed by	MDK, SAD	Job No.	35-08207-0042
Drawn by	CSL, JAN	Date	December 2011

Sht. C10 of 34

Saved: 07-31-2013 8:05:58 AM by REJ
 Plot Scale: 1:20 08-14-2013 11:12:11 AM by REJ
 C:\2008\08207\Waterline Adjustment Plans\08207-C10-WL Plan07