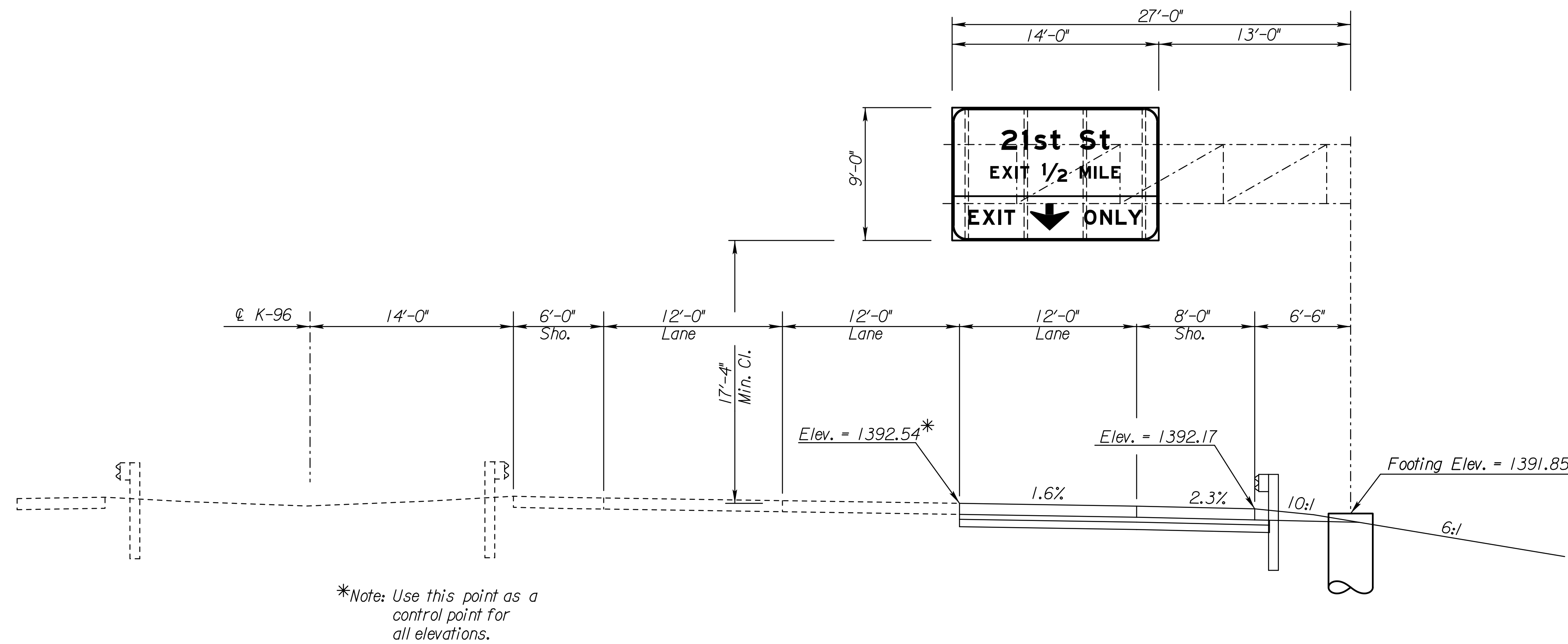


STATE	PROJECT NO.	YEAR	SHEET NO.	TOTAL SHEETS
KANSAS	472-85066	2014	218	388

CANTILEVER SIGN SUPPORT DETAILS					
Design Number	"X"	Arm Length	"N"	"C"	Footing
3	21'-0"	27'-0"	3	1/16"	H
Serial Number = 087S316					

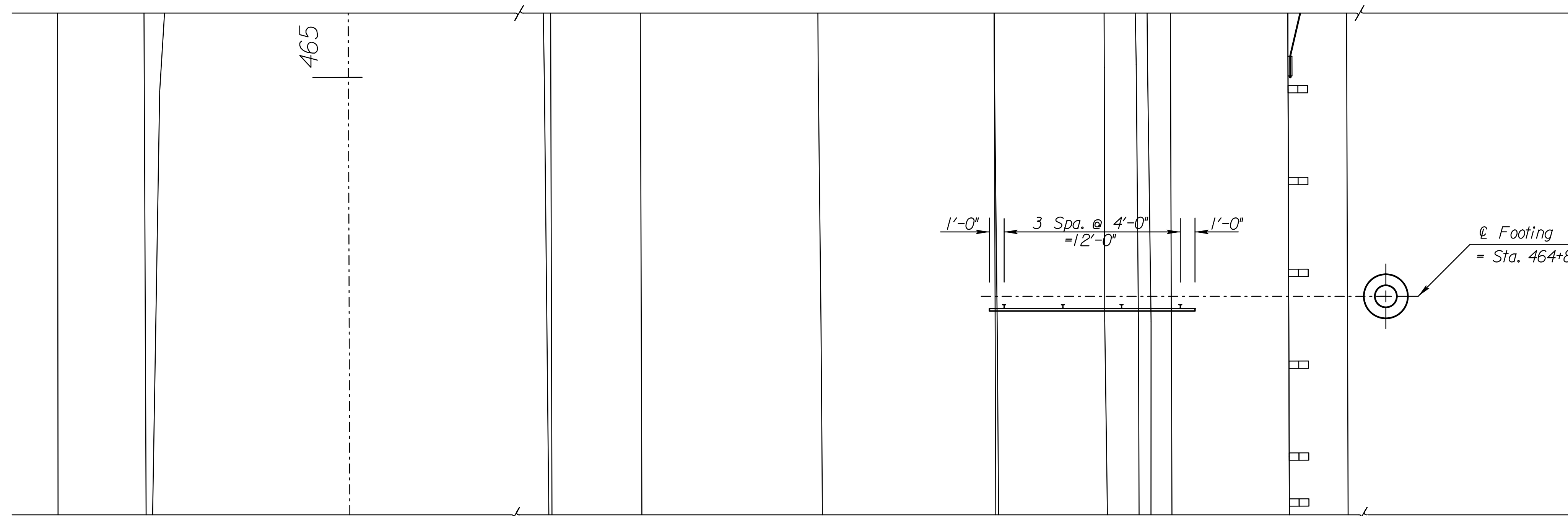
The serial number shall be painted in black paint using three-inch stencils. The serial number will be painted so it is readable from the structure's assigned route at approximate eye level on the right leg (looking up station).



\*Note: Use this point as a control point for all elevations.

**ELEVATION**

℄ K-96 Sta. 464+85  
(Looking East)



Scale: 1" = 5'-0"

**PLAN**

Plotted By: ap  
File: A:\2009\0952\Overhead Signing - KD07\EN35700\POS02.dgn  
Plot Date: 30-DEC-2013 16:22

3					
2					
1					
NO.	DATE	REVISIONS	BY	APP'D	
<b>KANSAS DEPARTMENT OF TRANSPORTATION</b> EB K-96 Sta. 464+85 Cantilever Type Overhead Sign Structure Construction Layout Proj. No. 096-87 EN-3570-01 Sedgwick Co.					
SHEET NO.	OF	SCALE	APP'D		
DESIGNED		DETAILED	QUANTITIES	CADD	
DESIGN CK.		DETAIL CK.	QUAN. CK.	CADD CK.	