

AS BUILT PLANS

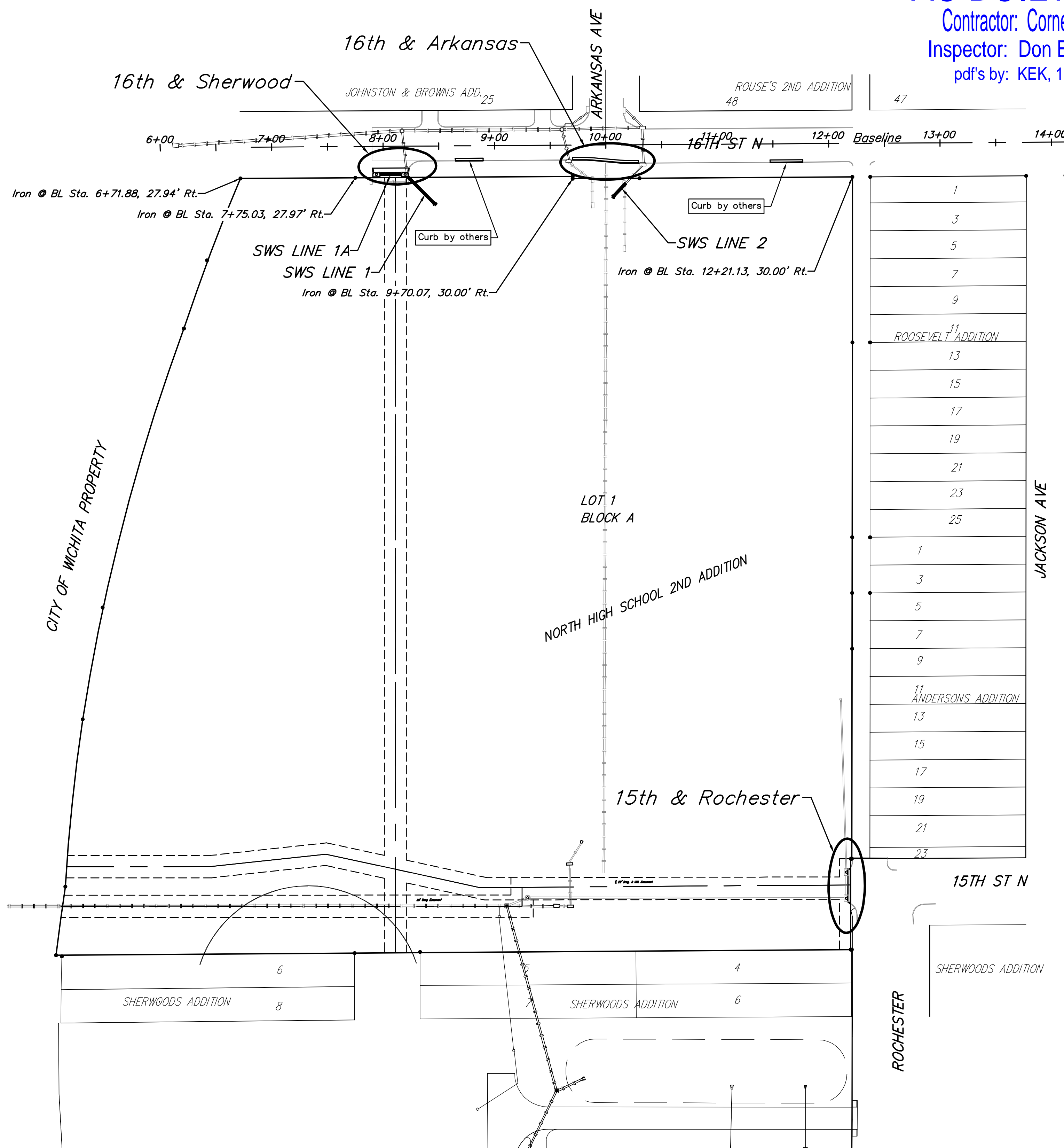
Contractor: Cornejo & Sons
 Inspector: Don Eddingfield
 pdf's by: KEK, 11/15/13

Paving Improvements with Incidental Stormwater Sewer

to serve

North High School 2nd Addition Private Project: 224 PPP (607861) CITY OF WICHITA, KANSAS

Gary Janzen, P.E. City Engineer
 JUNE 2013



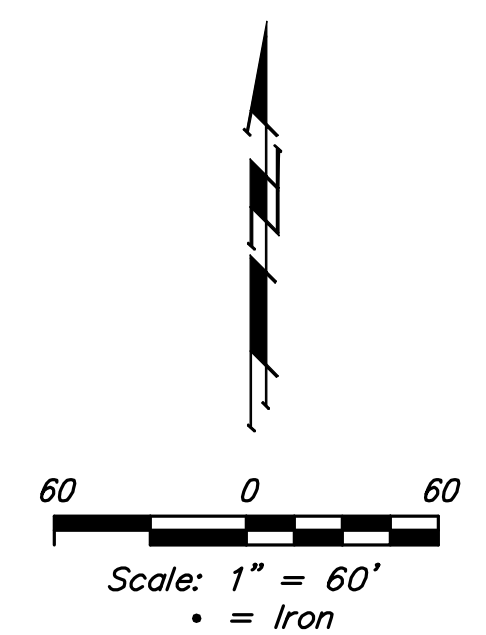
1
3
5
7
9
ROOSEVELT 1 st ADDITION
13
15
17
19
21
23
25
1
3
5
7
9
11 ANDERSONS ADDITION
13
15
17
19
21
23

BENCHMARK

□ CUT TOP OF CURB 250'± WEST AND 41'± NORTH OF THE SOUTHEAST CORNER OF LOT 1, BLOCK A, NORTH HIGH 2ND ADDITION.
 ELEVATION = 1307.38 NAVD88 (1306.91 NAVD29)
 □ CUT TOP OF CURB AT END OF RETURN, 7' SOUTH OF FIRE HYDRANT, SW CORNER OF 15TH AND ROCHESTER.
 ELEVATION = 1307.79 NAVD88 (1307.32 NAVD29)
 □ CUT TO, 10' OF WEST END OF EX. INLET, SW CORNER 16TH & ARKANSAS.
 ELEVATION = 1307.79 NAVD88 (1307.32 NAVD29)

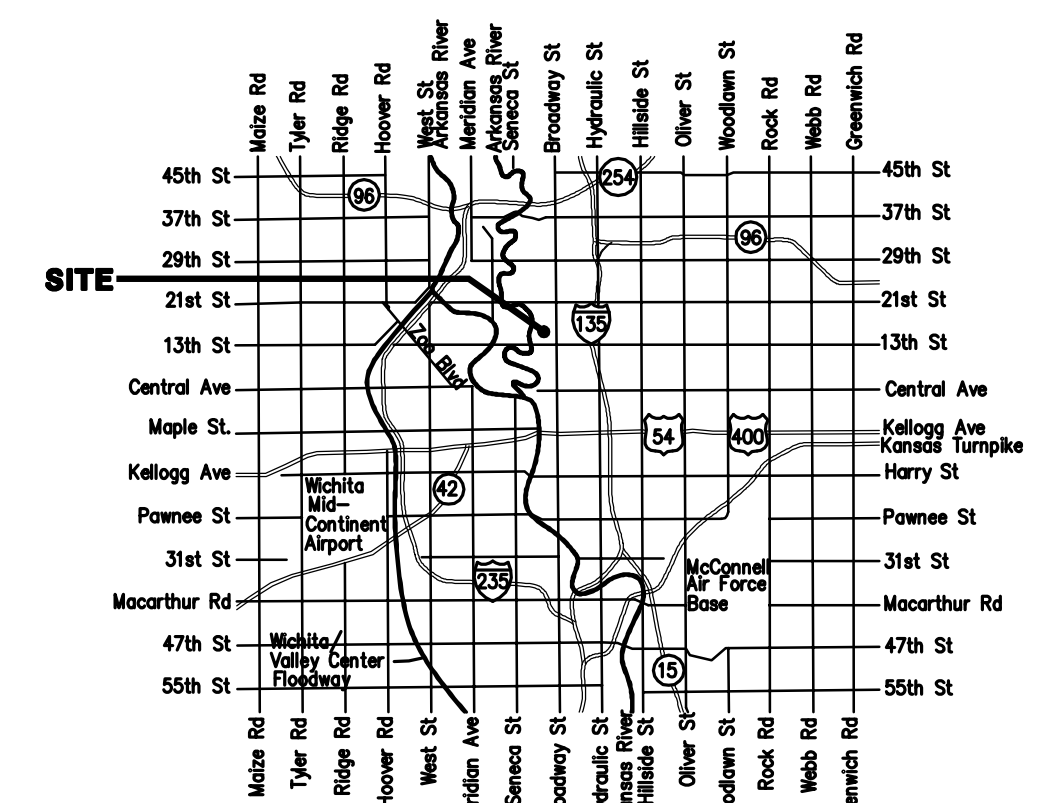
SHEET INDEX:

Title Sheet	1
Paving Plan	2
Line 1, 1A, & 2 Plan/Profile	3
Sign Detail	4
Reference Erosion Control Plan	5
Reference BMP Details	6



GENERAL NOTES

- Contractor will be required to provide notice to utility companies a minimum of forty-eight (48) hours prior to any excavation, as follows:
 Kansas One-Call 687-2470
 The Contractor must notify the following in case of an emergency:
 Cox Communications 262-4270
 Kansas Gas Service 1-888-482-4950
 Westar Energy 383-8650
 Black Hills Energy (Gas) 1-800-303-0357
 ATT 268-2245
 City of Wichita Water Dept. 268-4563
 City of Wichita Sewer Maint. 268-4024
 City of Wichita Storm Sewer Maint. 268-4090
 City of Wichita Traffic Maint. 268-4034
- Utility service lines, poles, valve boxes, meters, and etcetera are to be adjusted as necessary by others prior to construction unless the plans specifically call for their adjustment by the Contractor or unless the plans specifically identify a utility to be adjusted by its owner during construction. Existing utilities and their location, as shown on the plans, represent the best information obtainable for design. The Contractor will be required to work around existing utilities within the right-of-way which do not conflict with proposed construction.
- All disturbed R/W areas not intended for pavement or sidewalk construction shall be seeded with Kansas Premium Fescue Blend at a rate of 8 lb./1000 Sq. Ft., fertilized with a 16-20-6 ratio at a rate of 4 lb./1000 Sq. Ft., and mulched with Prairie Hay at a rate of 92 lb./1000 Sq. Ft. Mulch shall be "patted" with forks or punched into soil to reduce loss due to wind.
- Rubble from the removal of miscellaneous structures and excess excavation which is to be wasted shall be disposed of on sites to be provided by the Contractor. These sites shall be approved by the Engineer as to suitability, appearance and site location. Locations, in the opinion of the Engineer, that will leave an unsightly appearance will not be approved. All disposal sites must be approved by the Kansas Department of Health and Environment. Material either stockpiled or disposed of in a flood plain would require a Kansas State Board of Agriculture permit. Any material dumped in waters of the United States or wetlands is subject to U.S. Corps. of Engineers permitting regulations. Any material buried or stockpiled beyond approved construction limits would require additional archaeological investigations unless buried in a previously approved borrow location.
- Contractor to remove concrete sidewalk to the nearest construction joint if within 3' of joint. Saw cut if over 3' from joint. Removal and replacement of pavement shall not be paid for directly, but shall be considered incidental to other items in the project.
- Contractor shall furnish the inspector with a copy of the manufacturer's certification for any pipe used on this project after completion of pipe installation. The engineer will not certify the project to the city until pipe certification has been received.
- Trees and shrubs in public right-of-way which are in direct conflict with proposed new construction shall be removed by the Contractor with the Engineer's approval. Trees and shrubs which are not in direct conflict with proposed new construction shall be saved and protected from damage.
- All sewer lines and appurtenances shall be installed in accordance with the most recent edition of City of Wichita, Kansas Standard Specifications for the Construction of City Projects.
- Contractor shall not start work on the project until the project inspector is assigned to the project and is present on the site. Contractor shall not start on the project until all necessary bonds and permits have been obtained. Bonds may include but are not limited to Statutory, Performance & Maintenance. Any work done without inspection will be required to be uncovered for inspection.
- The Baseline for this project is the \mathcal{C} of 16th Street North with the \mathcal{C} of Arkansas Ave. = Sta. 10+00



APPROVED AS NOTED
 BY CITY ENGINEER OF WICHITA

Engineering: *Don Eddingfield* 6/19/13
 Stormwater: *Jim Handberg* 6-24-13

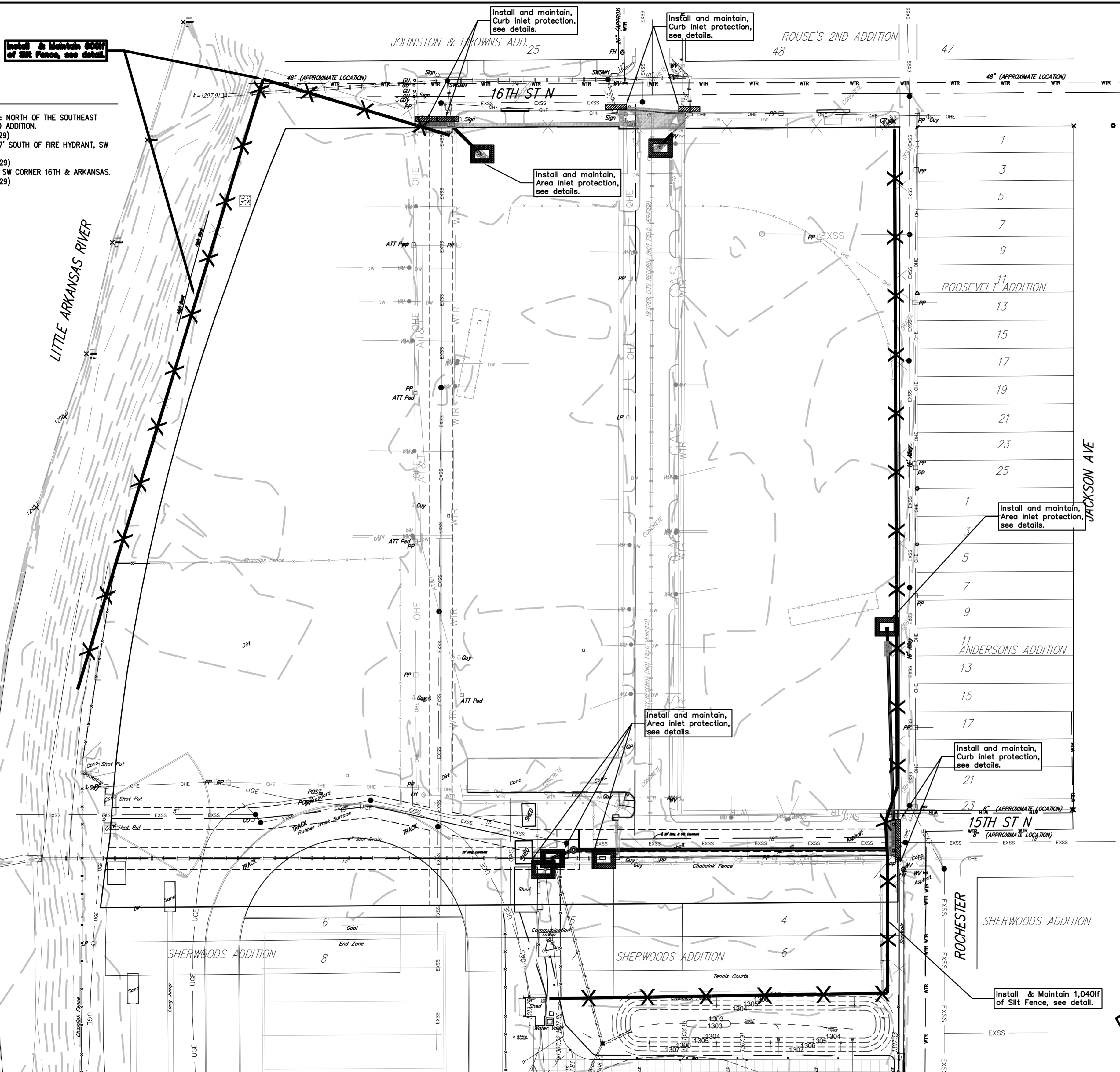
NOTE TO CONTRACTORS
 Installation, inspection and testing for this project is to be provided by a Licensed Consulting Engineering Firm under contract with the Owner/Developer. Said inspection to be in accordance with the City of Wichita standard construction engineering practices and certified by a Licensed Professional Engineer. No work shall be performed in dedicated easements or public right-of-way by the Contractor without such inspection nor shall any work be commenced without written authorization by the City Engineer. All Construction and Materials shall comply with the City of Wichita Specifications and Standards (on file and available in the City Engineer's Office).



Baughman
 Baughman Company, P.A. 315 Ellis St. Wichita, KS 67211 P 316-262-7271 F 316-262-0149
 ENGINEERING | SURVEYING | PLANNING | LANDSCAPE ARCHITECTURE

BENCHMARK

"□" CUT TOP OF CURB 25'± WEST AND 41'± NORTH OF THE SOUTHEAST CORNER OF LOT 1, BLOCK A, NORTH HIGH 2ND ADDITION. ELEVATION = 1307.38 NAVD88 (1306.91 NAVD29)
 "□" CUT TOP OF CURB AT END OF RETURN, 7' SOUTH OF FIRE HYDRANT, SW CORNER OF 15TH AND ROCHESTER. ELEVATION = 1307.79 NAVD88 (1307.32 NAVD29)
 "□" CUT TC, 10' OF WEST END OF EX. INLET, SW CORNER 16TH & ARKANSAS. ELEVATION = 1307.79 NAVD88 (1307.32 NAVD29)



LEGAL DESCRIPTION

Lot 1, Block A, North High School 2nd Addition, Wichita, Sedgewick County Kansas.

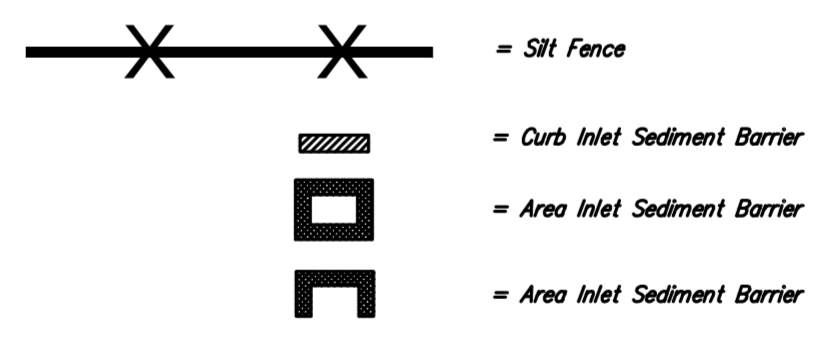
SITE INFORMATION

Total Area:	±456,000sq. ft. (10.46 acres)
Disturbed Area:	±450,000 sq. ft. (10.33acres)
Building Area:	±78,100 ft. (1.79acres)
Parking Required:	0 spaces
Parking Provided:	0 Spaces

EROSION CONTROL NOTES

- No land clearing or grading shall begin until all applicable erosion control measures have been installed. This project is subject to this SWPP Plan. The Contractor shall comply with any unusual requirements as necessary for the site to be in compliance during construction, per this plan and City specs (See #11).
- All exposed areas shall be seeded as specified within 21 days of final GRADING.
- Should construction stop for longer than 14 days, the site shall be seeded as specified.
- Maintain erosion control measures after each rain and at least once a week.
- This plan shall not be considered all inclusive as the contractor shall take all necessary precautions to prevent soil sediment from leaving the site.
- Contractor shall comply with all state and local ordinances that apply.
- Additional erosion and sediment control measures will be installed if deemed necessary by on site inspection.
- Land disturbing activities shall not commence until approval to do so has been received by governing authorities.
- If installation of storm drainage system should be interrupted by weather or nightfall, the pipe ends shall be covered with filter fabric.
- See Landscape Plan for ground treatments in all disturbed areas beyond impervious surfaces.
- This SWPP Plan should be in job trailer and/or on site at all times. The Contractor is responsible for any needed changes, updates or maintenance to BMP's on site. This plan may change and updates need to be recorded and documented on the plan. This plan is a flexible plan, due to changing site conditions and weather. Please inform Landscape Architect and/or Engineer of changes to plan.
- ANY substitutions for the sediment control devices shown, must be approved by the Landscape Architect and/or Engineer prior to any use on site.
- An NPDES Permit Application has been submitted for this property. A copy of this application must be kept at the job site for the duration of the construction process.

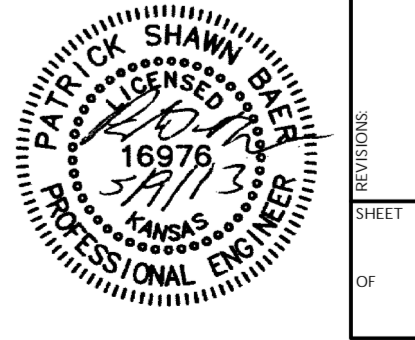
EROSION CONTROL LEGEND



**FOR REFERENCE ONLY
 SEE SITE DEMOLITION
 PLANS FOR CONSTRUCTION**

SITE EROSION CONTROL PLAN

Scale 1" = 50'-0"



Baughman Company, P.A.
 315 Ellis St. Wichita, KS 67211 P 316-262-2771 F 316-262-0149
 Sedgewick County, Kansas License No. 123456789
 12345 Main St., Wichita, KS 67202

Demo. & Utility Removal, North High School
Erosion Control
 Bid # 13-42-884, Project # 1241

SHEET
 OF 4
 5

Baughman Company, P.A.
 315 Ellis St. Wichita, KS 67211 P 316-262-2771 F 316-262-0149
 Sedgewick County, Kansas License No. 123456789
 12345 Main St., Wichita, KS 67202

North High School 2nd Addition
Erosion Control Plan
 Reference Copy
 Paving Improvements

SHEET
 OF 5
 6

