

PRIVATE STORM WATER SEWER EXTENSION

TO SERVE

TARGET OUTPARCEL PHASE V NEWMARKET SQUARE

PRIVATE PROJECT NO. 0222 PPD (607861)

CITY OF WICHITA, KANSAS

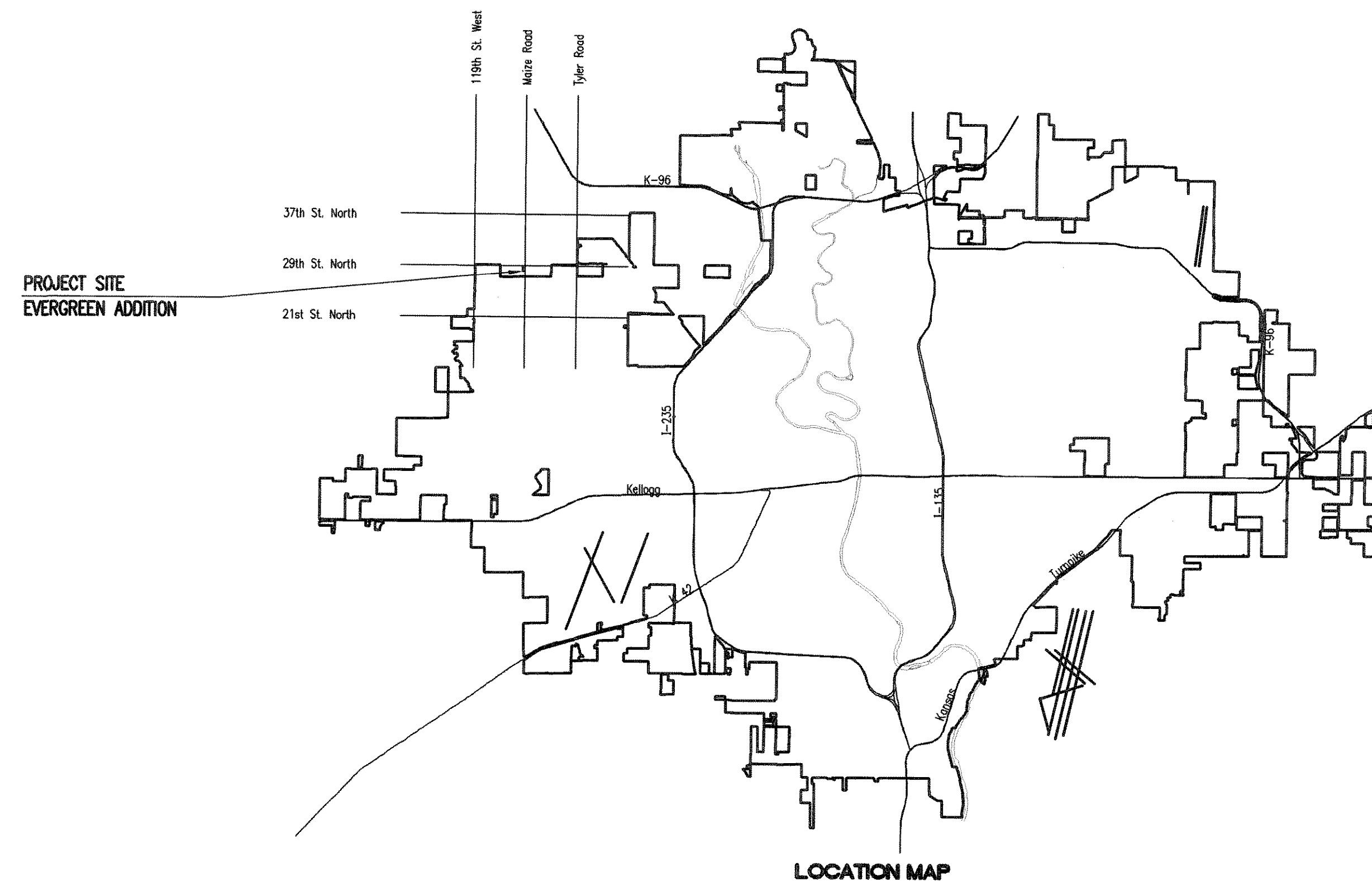
GARY JANZEN, P.E. - CITY ENGINEER

DEVELOPER CONTACT

MR. DAVID HAMBRICK
SLAWSON COMPANIES
727 N. WACO, SUITE 400
WICHITA, KANSAS 67203
(316) 263-3201

INDEX OF SHEETS

SHEET NO. C3.1	PPD TITLE SHEET
SHEET NO. C3.2	PPD KEY MAP AND SWS PLAN
SHEET NO. C3.3	STANDARD TYPE 1 CURB INLET
SHEET NO. C1.3	GRADING PLAN
SHEET NO. C2.1	PLAT
SHEET NO. C6.1-C6.3	SOIL EROSION BMP DETAILS



LOCATION MAP

STORM WATER QUALITY COMPLIANCE STATEMENT

To: City of Wichita, Kansas

The undersigned, being the owner of a facility that has applied to the City of Wichita, Kansas, for a storm sewer tap permit, hereby acknowledges the requirements of Section 16.32 of the Wichita City Code, which states that only storm water can be discharged into the municipal storm sewer system, with the following exceptions:

1. A discharge authorized by, and in full compliance with, a federal or state NPDES permit.
2. A discharge from emergency fire fighting.
3. A discharge from water line flushing.
4. A discharge from lawn watering, landscape irrigation, or other irrigation water.
5. A discharge or flow from a diverted stream flow or natural spring.
6. A discharge or flow from uncontaminated ground water or rising groundwater.
7. Uncontaminated groundwater infiltration.
8. Uncontaminated flow from a foundation drain, crawl space pump, footing drain, or sump pump.
9. A discharge from a potable water source not containing any harmful substance or material from the cleaning or draining of a storage tank or other container.
10. A flow from air conditioning condensation that is unmixing with water from a cooling tower, emissions scrubber, emissions filter, or any other source of pollutant.
11. Flows from individual residential car washing.
12. A flow from a riparian habitat, wetland, or natural spring.
13. Storm water runoff from a roof that is not contaminated by any runoff from an emissions scrubber or filter or any other source of pollutant.
14. Residential heat pump discharges.
15. Swimming pool water, excluding filter backwash, that has been de-chlorinated so it contains no harmful quantity of chlorine, muriatic acid or other chemical used in the treatment or disinfection of the swimming pool water or in pool cleaning.

I further understand that allowing any other discharge will subject me to the penalties provided in said Section 16.32, as well as other federal and state penalties.

Signed: David A. Hambrick Date: 4-4-14
 Print name: David A. Hambrick
 Company: New Market VI L.L.C.
 Address: 727 North Waco Suite 400
 City/State: Wichita, Kansas 67203
 Telephone Number: 316-263-3201

APPROVED AS NOTED
BY CITY ENGINEER OF WICHITA

Engineering Rebecca Drif 4/10/14
 Stormwater J.C. Lue 4/10/14

NOTE TO CONTRACTORS

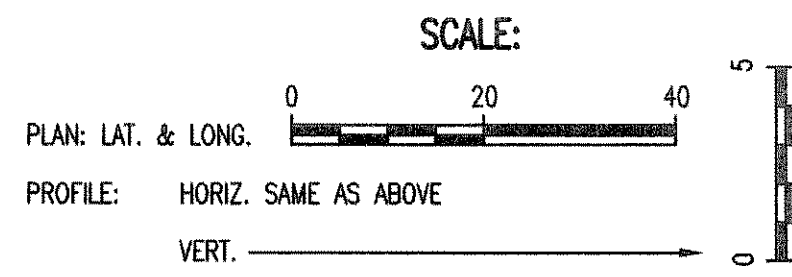
Inspection and testing for this project are to be provided by a Licensed Consulting Engineering Firm under contract with the Owner/Developer. Said Inspection to be in accordance with the City of Wichita standard construction engineering practices and certified by a Licensed Professional Engineer. No work shall be performed in dedicated easements or public right-of-way by the Contractor without such inspection, nor shall any work be commenced without written authorization by the City Engineer.

AS BUILTS

Contractor: McCullough Excavation, Inc.
 Project Inspector: Larry Gann
 5/15/2014
KEMILLER ENGINEERING P.A.
 117 E. Lewis, Wichita, KS 67202 (316)264-0242

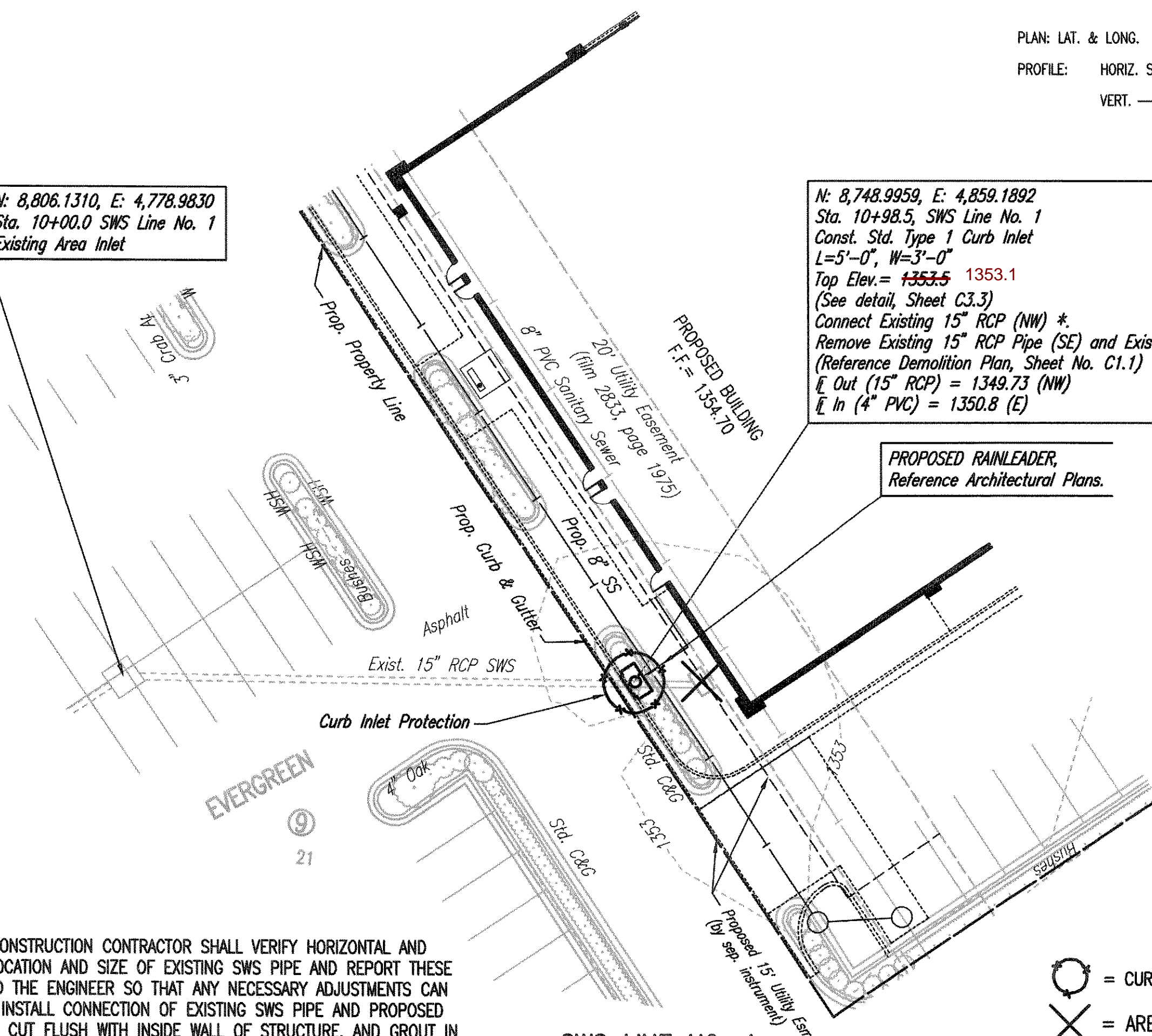
APRIL 2014
 PLANS PREPARED BY
PROFESSIONAL ENGINEERING CONSULTANTS, P.A.
 ENGINEERS
 WICHITA, KANSAS





N: 8,806.1310, E: 4,778.9830
Sta. 10+00.0 SWS Line No. 1
Existing Area Inlet

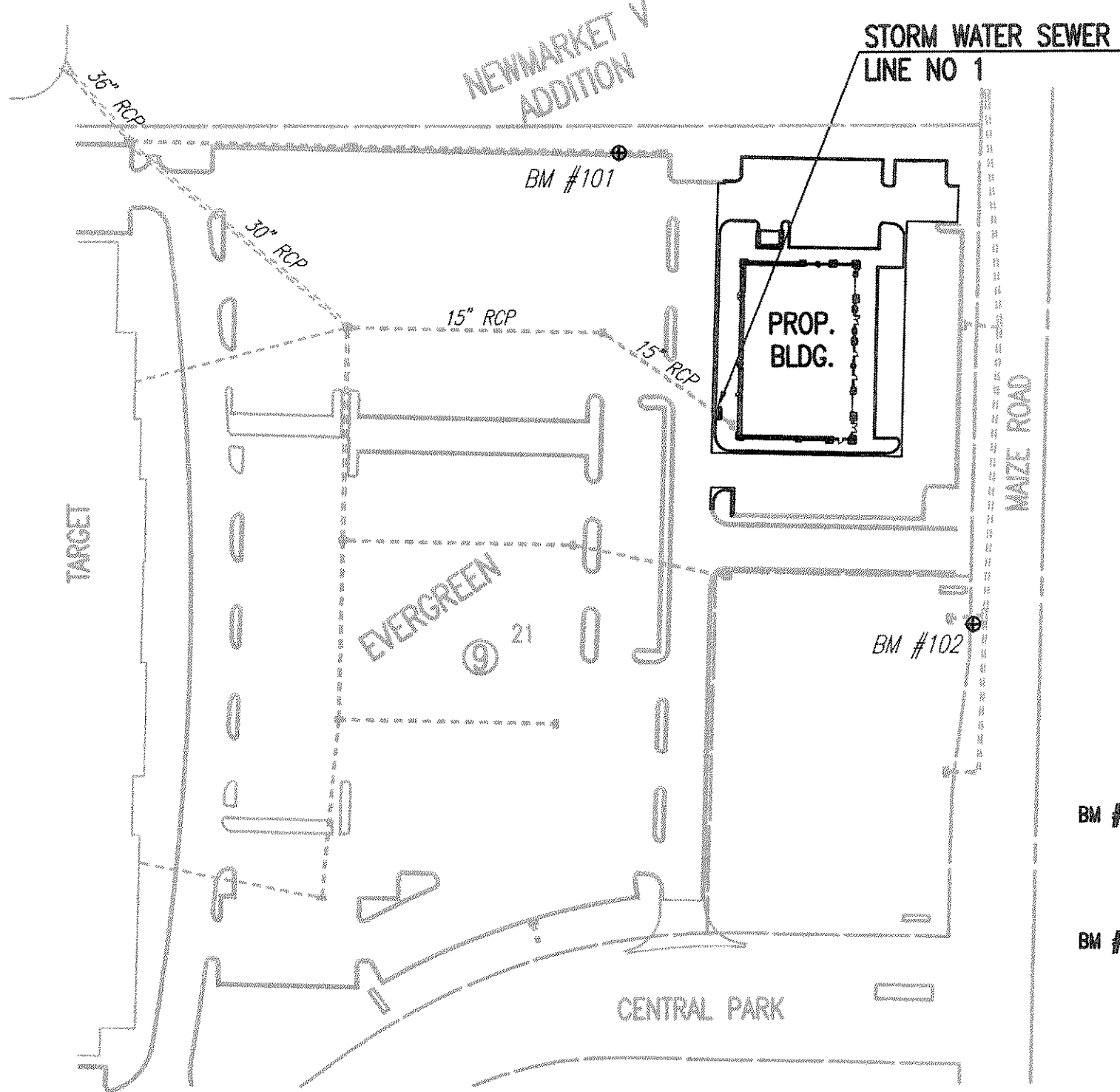
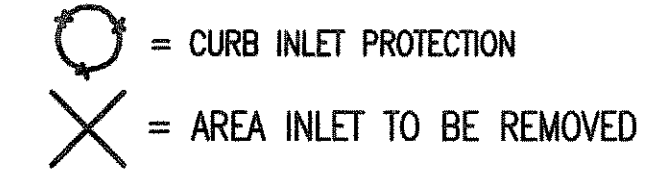
N: 8,748.9959, E: 4,859.1892
Sta. 10+98.5 SWS Line No. 1
Const. Std. Type 1 Curb Inlet
L=5'-0", W=3'-0"
Top Elev. = 1353.5 1353.1
(See detail, Sheet C3.3)
Connect Existing 15" RCP (NW) *
Remove Existing 15" RCP Pipe (SE) and Existing Inlet.
(Reference Demolition Plan, Sheet No. C1.1)
E Out (15" RCP) = 1349.73 (NW)
E In (4" PVC) = 1350.8 (E)



PROPOSED RAINLEADER,
Reference Architectural Plans.

SWS LINE NO. 1

* PRIOR TO CONSTRUCTION CONTRACTOR SHALL VERIFY HORIZONTAL AND VERTICAL LOCATION AND SIZE OF EXISTING SWS PIPE AND REPORT THESE FINDINGS TO THE ENGINEER SO THAT ANY NECESSARY ADJUSTMENTS CAN BE MADE. INSTALL CONNECTION OF EXISTING SWS PIPE AND PROPOSED STRUCTURE, CUT FLUSH WITH INSIDE WALL OF STRUCTURE, AND GROUT IN PLACE WITH NON-SHRINK GROUT. SUBSIDIARY TO SWS STRUCTURE.



SEE SHEET NO. C2.1
FOR PLAT COORDINATES

BENCHMARK LIST

- BM #101- "d" CUT ON THE TOP OF THE CURB AT THE NE CORNER OF TARGET PARKING LOT 30 1/2 W OF THE CURB INLET S OF THE 6" PIN OAK, N OF THE N DRIVE ENTRANCE TO TARGET. ELEV. = 1353.36 (NAVD 88)
- BM #102- RAILROAD SPIKE ON THE W FACE OF THE LIGHT POLE ON THE W SIDE OF MAIZE ROAD, THE SECOND LIGHT POLE N OF CENTRAL PARK STREET. ELEV. = 1352.39 (NAVD 88)

GENERAL NOTES

- ALL CONSTRUCTION AND MATERIALS TO COMPLY WITH CITY OF WICHITA SPECIFICATIONS AND STANDARDS.
- ALL ELEVATIONS SHOWN ARE NAVD 88 DATUM.
- CONTRACTOR WILL BE REQUIRED TO PROVIDE A MINIMUM ADVANCE NOTICE OF SEVENTY-TWO (72) HOURS TO UTILITY COMPANIES PRIOR TO STARTING ANY EXCAVATION AS FOLLOWS:

KANSAS ONE-CALL 687-2470 or 811

THE CONTRACTOR MUST NOTIFY THE FOLLOWING IN CASE OF AN EMERGENCY:

EMERGENCY DISPATCH 911
COX COMMUNICATIONS 800-778-9140
KANSAS GAS SERVICE 888-482-4950
WESTAR ENERGY 800-383-1183
BLACK HILLS ENERGY 800-694-8989
AT&T 800-286-8313
WICHITA WATER UTILITIES (SS AND WL) 262-6000
- THE CONTRACTOR SHALL LIMIT THE EXTENT OF TRENCH TO REMAIN OPEN OVERNIGHT AND WEEKENDS TO LESS THAN 50 FEET. ANY OPEN TRENCH SHALL BE BARRICADED/PROTECTED WITH ORANGE CONSTRUCTION FENCING.
- AT LEAST 72 HOURS PRIOR TO BEGINNING EXCAVATION (EXCLUDING WEEKENDS AND HOLIDAYS), THE CONTRACTOR SHALL CONTACT THE KANSAS ONE-CALL SYSTEM, A UTILITY LOCATION SERVICE, AT (316) 687-2470 AND CITY OF WICHITA UTILITY LOCATES, WWW.WICHITA.GOV/LOCATE (268-4260) TO REQUEST THE LOCAL UTILITY COMPANIES MARK ANY EXISTING LINES WITHIN THE PROJECT AREA.
- UNDERGROUND UTILITY SERVICE LINES AND OVERHEAD UTILITY POLE LINES ARE TO BE ADJUSTED AS NECESSARY BY OTHERS PRIOR TO CONSTRUCTION UNLESS THE DRAWINGS SPECIFICALLY CALL FOR THEIR ADJUSTMENT BY THE CONTRACTOR OR UNLESS THE DRAWINGS SPECIFICALLY IDENTIFY A UTILITY TO BE ADJUSTED BY ITS OWNER DURING CONSTRUCTION. EXISTING UTILITIES AND THEIR LOCATIONS, AS SHOWN ON THE DRAWINGS, REPRESENT THE BEST INFORMATION OBTAINABLE FOR THE DESIGN. THE CONTRACTOR WILL BE REQUIRED TO WORK AROUND EXISTING UTILITIES WHICH DO NOT CONFLICT WITH PROPOSED CONSTRUCTION.
- THE CONTRACTOR SHALL BE RESPONSIBLE FOR PRESERVING PROPERTY IRONS. THE CONTRACTOR WILL BE REQUIRED TO RE-ESTABLISH ANY PROPERTY IRONS WHICH ARE DAMAGED OR DESTROYED BY HIS CONSTRUCTION OPERATIONS. SUCH IRONS SHALL BE RE-ESTABLISHED BY A LICENSED LAND SURVEYOR IN ACCORDANCE WITH STATE LAWS.
- CONTRACTOR SHALL PROVIDE POSITIVE DRAINAGE AWAY FROM ALL MANHOLE COVERS.
- THE CONTRACTOR SHALL PREVENT ANY CONSTRUCTION DEBRIS FROM ENTERING THE EXISTING STORM SEWER DURING CONSTRUCTION.
- RUBBLE FROM THE REMOVAL OF MISCELLANEOUS STRUCTURES INCLUDING ANY TREES REMOVED, TREE TRIMMINGS, AND EXCESS EXCAVATION WHICH IS TO BE WASTED SHALL BE DISPOSED OF ON SITES PROVIDED BY THE CONTRACTOR. THESE SITES SHALL ALSO BE APPROVED BY THE ENGINEER AS TO SUITABILITY, APPEARANCE, AND SITE LOCATION. LOCATIONS THAT, IN THE OPINION OF THE ENGINEER, WILL LEAVE AN UNSIGHTLY APPEARANCE WILL NOT BE APPROVED. ALL DISPOSAL SITES MUST BE APPROVED BY THE KANSAS DEPARTMENT OF HEALTH AND ENVIRONMENT. MATERIAL EITHER STOCKPILED OR DISPOSED OF IN A FLOOD PLAIN WILL REQUIRE A KANSAS STATE BOARD OF AGRICULTURE PERMIT. ANY MATERIAL DUMPED IN WATERS OF THE UNITED STATES OR WETLANDS IS SUBJECT TO U.S. CORPUS OF ENGINEERS PERMITTING REGULATIONS. ANY MATERIAL BURIED OR STOCKPILED BEYOND APPROVED CONSTRUCTION LIMITS MAY REQUIRE ARCHAEOLOGICAL INVESTIGATIONS UNLESS BURIED IN A PREVIOUSLY APPROVED DISPOSAL LOCATION.
- ALL APPROVED EXCESS EXCAVATION WHICH IS TO BE WASTED SHALL BE STOCKPILED AS DIRECTED BY THE ENGINEER AT NO ADDITIONAL COST TO THE OWNER. STOCKPILE LOCATIONS SHALL BE AS DIRECTED BY THE OWNER AND IN ACCORDANCE WITH GENERAL NOTE NO. 9 ABOVE.
- ALL LAWN/TURF AREAS DISTURBED BY CONSTRUCTION OF THE PROPOSED IMPROVEMENTS SHALL BE RESTORED WITH THE SAME GRASS/SOD AS EXISTING. RESTORATION OF DISTURBED AREAS SHALL INCLUDE, BUT NOT BE LIMITED TO, TOP SOIL PREPARATION, SEEDING, MULCH, AND/OR RESEEDING. ALL SEEDING/SODDING WORK SHALL BE IN ACCORDANCE WITH THE CITY OF WICHITA STANDARD SPECIFICATIONS AND THE CITY OF WICHITA ADMINISTRATIVE REGULATION NO. AR6.5 WHICH GOVERNS CLEANUP AND RESTORATION OR REPLACEMENT FOLLOWING CONSTRUCTION.
- THE CONTRACTOR SHALL SEED ALL AREAS DISTURBED BY CONSTRUCTION ACTIVITIES WITH TEMPORARY RYE GRASS. RYE GRASS SEED SHALL BE PLANTED AT A MINIMUM RATE OF SIX (6) POUNDS PER ONE THOUSAND (1,000) SQUARE FEET. THIS TEMPORARY SEEDING MAY BE OMITTED ONLY IF OTHER SEEDING IS REQUIRED IN ACCORDANCE WITH GENERAL NOTE NO. 11 ABOVE. TEMPORARY SEEDING OR PERMANENT SEEDING/SODDING SHALL BE APPLIED WITHIN 14 DAYS AFTER THE AREA HAS BEEN DISTURBED.
- THE CONTRACTOR SHALL AVOID REMOVAL OR TRIMMING OF ANY TREES OR SHRUBS WHERE POSSIBLE. WHERE THE CONTRACTOR BELIEVES THE REMOVAL OR TRIMMING IS UNAVOIDABLE, HE SHALL COORDINATE SUCH WORK WITH THE ENGINEER.
- THE CONTRACTOR SHALL PREVENT ANY CONSTRUCTION DEBRIS FROM ENTERING THE EXISTING SANITARY SEWER DURING CONSTRUCTION.
- THE CONTRACTOR SHALL GIVE ALL PROPERTY OWNERS AND/OR TENANTS OF DEVELOPED PROPERTY ADJUTING THE CONSTRUCTION OF THIS PROJECT A MINIMUM OF TEN (10) DAYS ADVANCE NOTICE PRIOR TO START OF CONSTRUCTION.
- INTERURBAN TRAFFIC GENERATED OUTSIDE THE PROJECT AREA AND LOCAL BUSINESS OR RESIDENTIAL TRAFFIC GENERATED WITHIN THE PROJECT AREA ARE TO BE CARRIED THROUGH CONSTRUCTION AS FURTHER PROMULGATED BY PROJECT SPECIAL PROVISIONS. THE CONTRACTOR SHALL UTILIZE BARRICADES, SIGNS, GUARDS, AND FLAGMEN IN ACCORDANCE WITH THE MANUAL ON UNIFORM TRAFFIC CONTROL DEVICES.
- THE CONTRACTOR SHALL INSTALL AND/OR MAINTAIN EROSION CONTROL METHODS AS SPECIFIED. THE GENERAL LOCATION OF THE REQUIRED EROSION CONTROL IS ILLUSTRATED ON THE PLANS. THE STORM WATER SEWER CONTRACTOR SHALL BE RESPONSIBLE FOR MAINTAINING THE EROSION CONTROL SHOWN THROUGH THE COMPLETION OF THIS PROJECT. INSTALLATION OF THESE BMP'S DOES NOT RELIEVE THE CONTRACTOR OF THE RESPONSIBILITY OF ABATING SOIL EROSION.

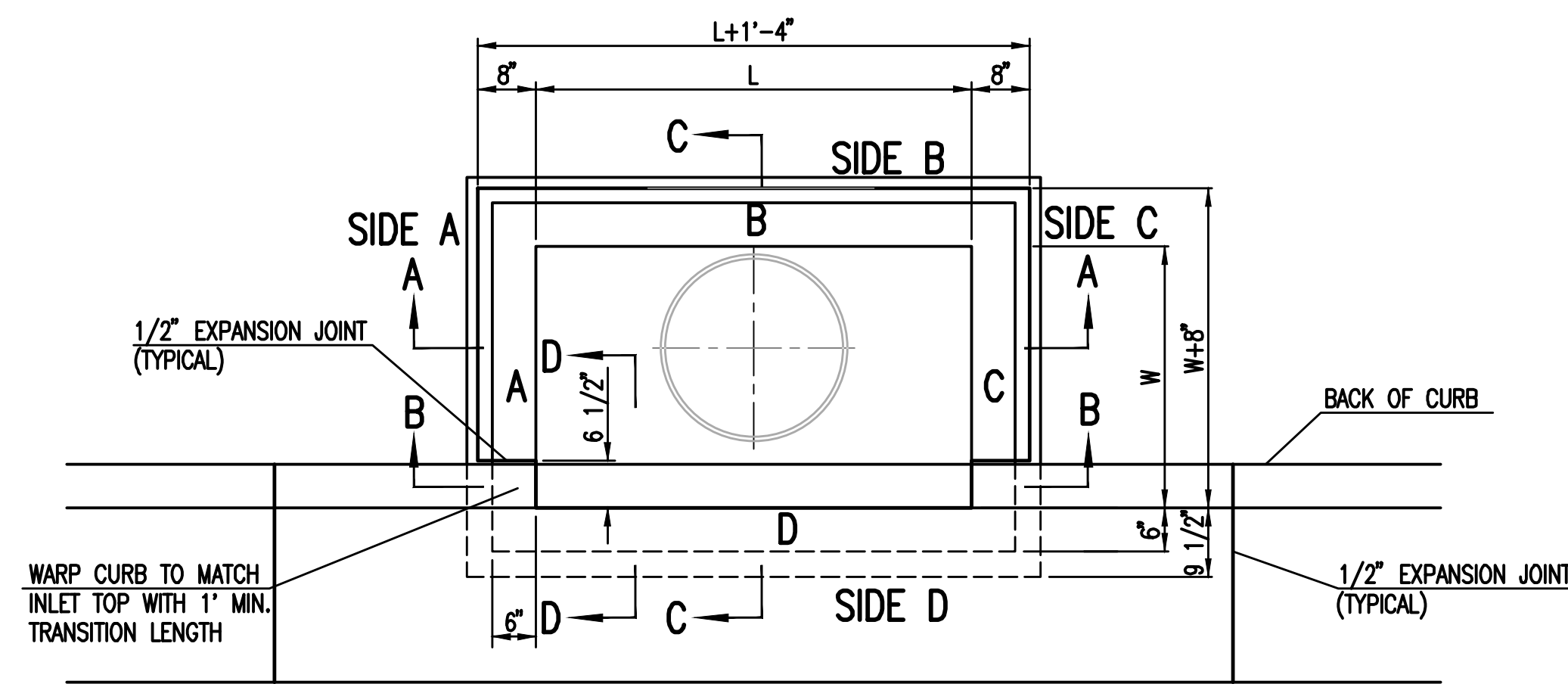
AS BUILTS

117 E. Lewis, Wichita, KS 67202 (316)264-0242



No.	Revision	By	Date
PRIVATE STORM WATER SEWER EXTENSION TARGET OUTPARCEL PHASE V NEWMARKET SQUARE PPD KEY MAP AND SWS PLAN GARY JANZEN, P.E. - CITY ENGINEER PRIVATE PROJECT NO. 0222 PPD (607861)			
PEC PROFESSIONAL ENGINEERING CONSULTANTS, P.A. 303 SOUTH TOPEKA WICHITA, KS 67202 316-262-2891 www.pec1.com			
Designed by	JEH	Job No. 35-14059-000-6364	Sht. C3.2 of 8
Drawn by	CSL, JAN	Date FEBRUARY 2014	

Sheet 04-10-2014 11:30:11 AM by CSI
 Plot Scale 1:1 04-10-2014 11:30:11 AM by CSI
 U:\Wichita-Civil\2014\14059\000\Drawings\PPD\14059-000-PPD-C3.2-PPD KEY MAP AND SWS PLAN



TOP VIEW

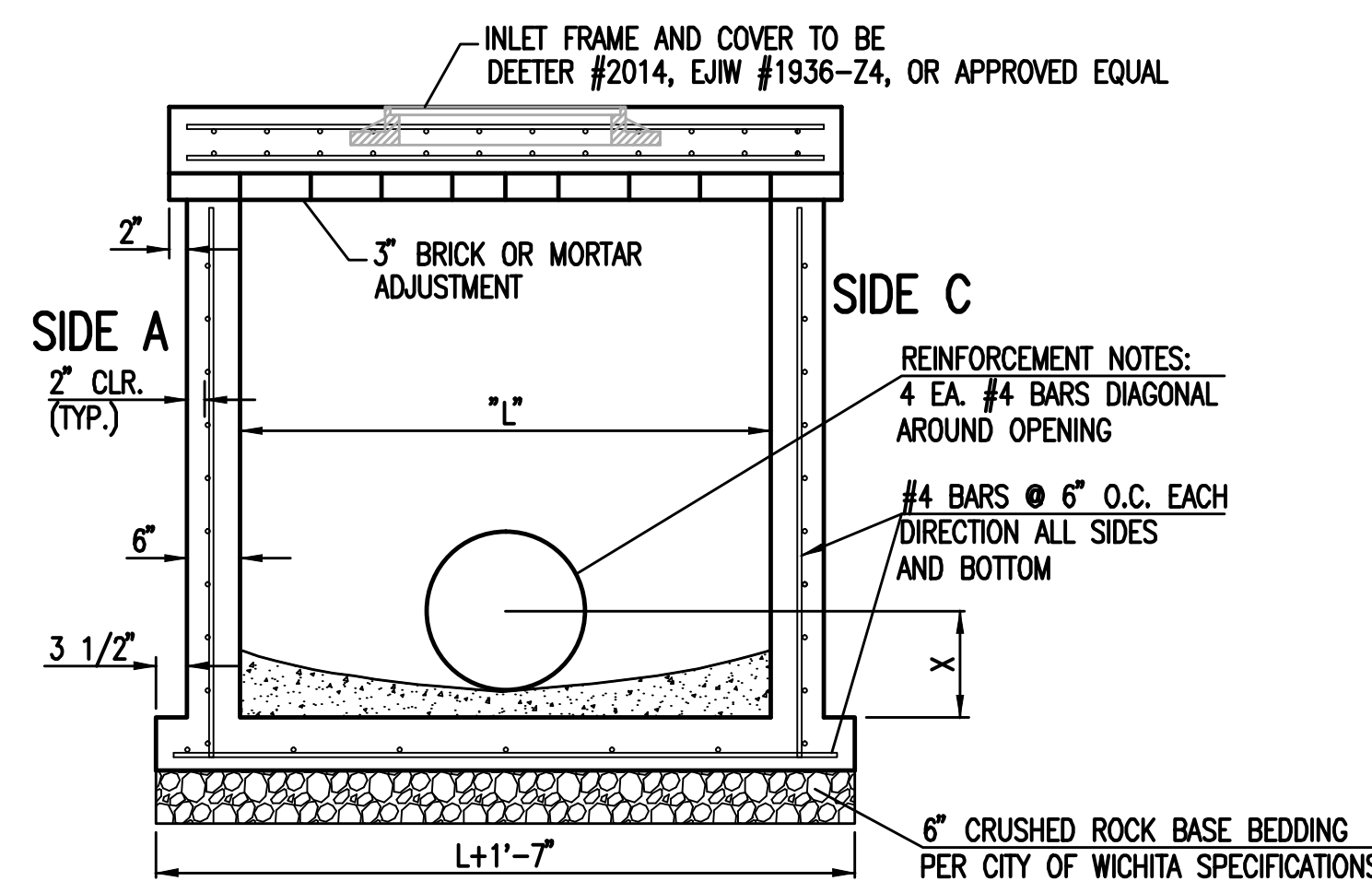
BAR SCHEDULE		
INLET OPENING	B1 BARS	SPACING
5'-0"	#4	4"
10'-0"	#6	3.5"

W	PRE-CAST TOP SIZE			PIPE DIA.**
	WIDTH	LENGTH	TOP	
3'-0"	W+8"	L+1'-4"	7 1/2"	21" & SMALLER
4'-0"	W+8"	L+1'-4"	7 1/2"	24" & 30"
5'-0"	W+8"	L+1'-4"	7 1/2"	36" & 42"
6'-0"	W+8"	L+1'-4"	7 1/2"	48" & 54"
7'-0"	W+8"	L+1'-4"	7 1/2"	60" & 66"

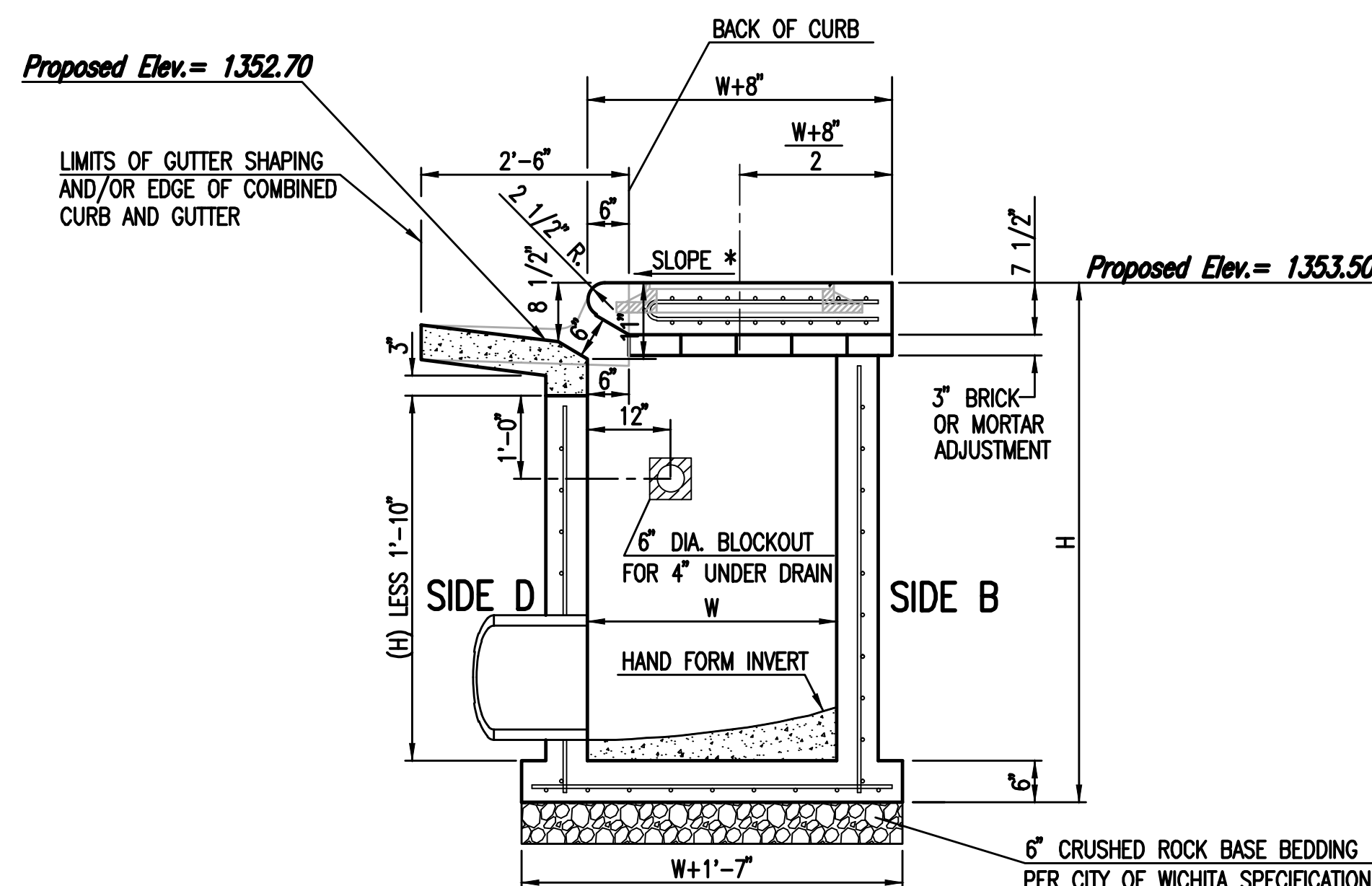
** FOR PIPES PERPENDICULAR TO INLET WALL

GENERAL NOTES

- CONCRETE TOPS TO BE INSTALLED ON THIN MORTAR CUSHION TO INSURE FULL SUPPORT ALONG BRICK. CONCRETE TOPS MAY BE CAST IN PLACE OR PRECAST. CONCRETE USED FOR INLET CONSTRUCTION SHALL CONFORM TO CITY OF WICHITA SPECIFICATIONS FOR CONCRETE PAVEMENT MIX.
- CONTRACTOR SHALL HAVE THE OPTION OF CONSTRUCTING 8" BRICK MASONRY WALLS BETWEEN THE CONCRETE INLET BASE AND TOP OF THIS INLET WHEN W=5'-0" AND H=7'-0" OR LESS.
- INLET INVERT SHALL BE SHAPED WITH 8 SACK SAND MIX CONCRETE TO CREATE FLOW CHANNELS AND TO INCREASE HYDRAULIC EFFICIENCY SUCH THAT THE INLET WILL BE SELF CLEANING BETWEEN ALL INLET AND/OR OUTLET PIPES.
- THE ENDS OF ALL PIPES INSTALLED IN INLETS SHALL BE CUT OFF FLUSH WITH THE INSIDE FACE OF THE INLET WALL.
- INLET FRAME AND COVER TO BE DEETER #2014, EJIW #1936 Z4, OR APPROVED EQUAL, SEE SW-303.
- CONTRACTOR SHALL REMOVE LIFTING HOOKS AFTER INSTALLATION. RECESSES IN INLET WALL SHALL BE GROUTED FLUSH TO THE INLET WALL WITH HYDRAULIC CEMENT AFTER THE INLET IS IN PLACE. LIFTING HOLES THRU THE INLET WALL WILL NOT BE ACCEPTED.

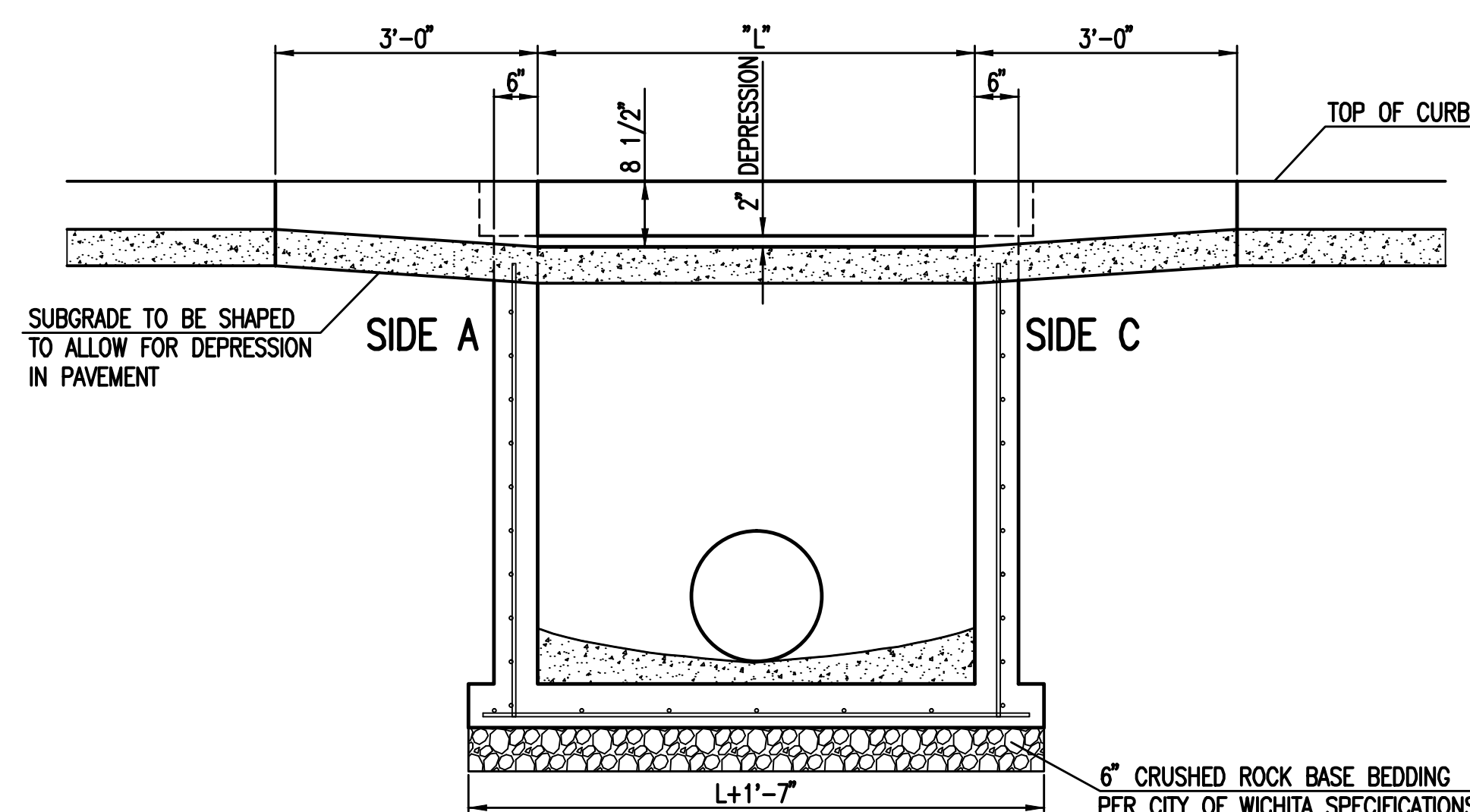
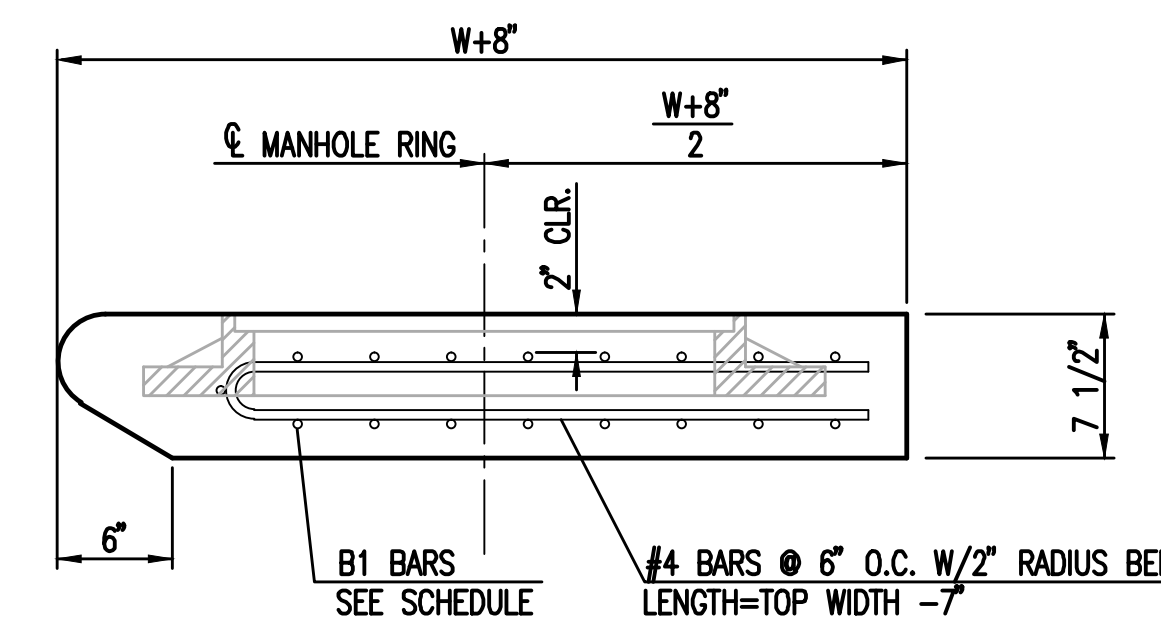


SECTION "A-A"

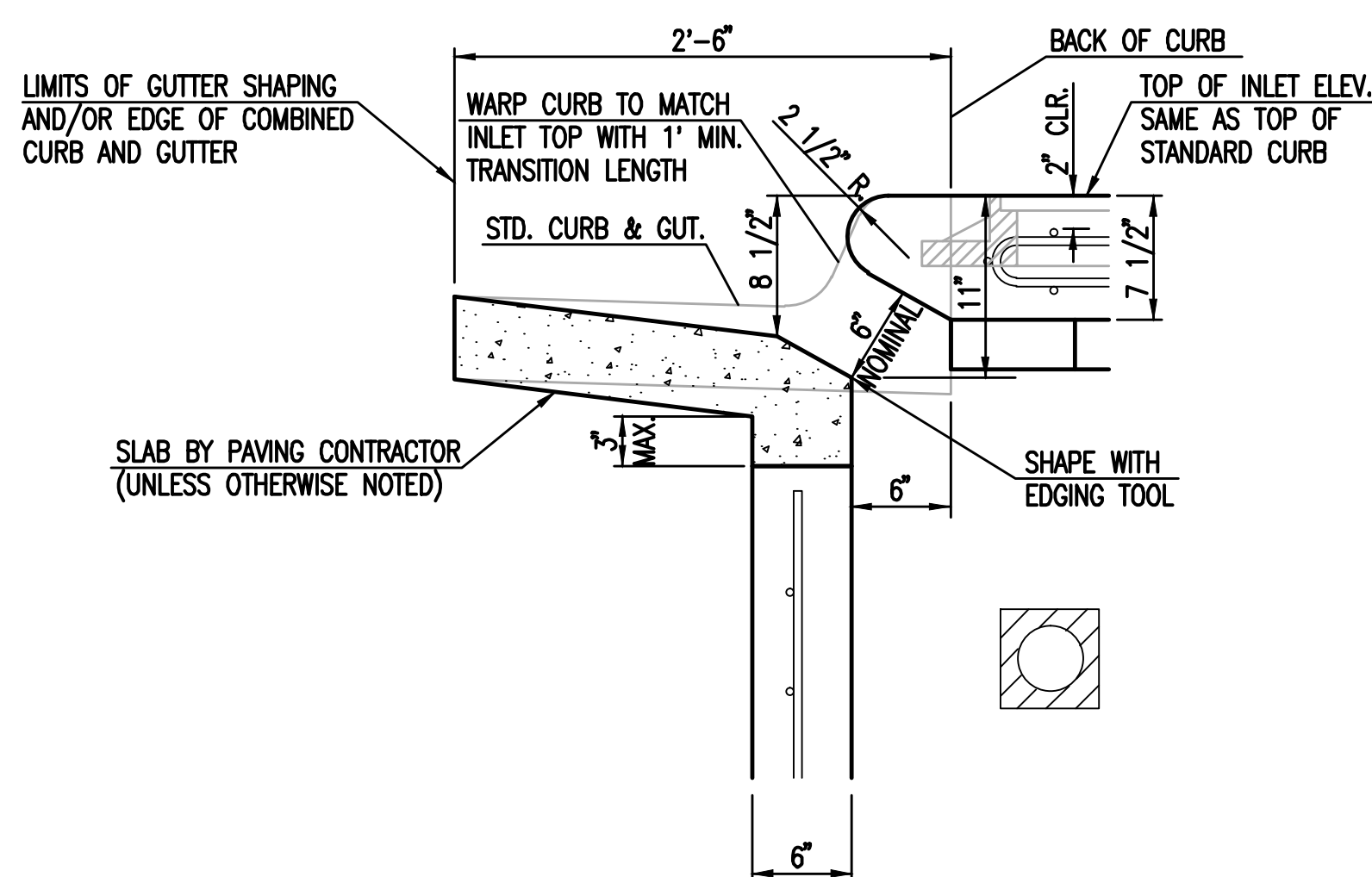


SECTION "C-C"

NOTES:
* SLOPE OF INLET TOP TO MATCH SIDEWALK OR PARKING SLOPES WITHIN LIMITS INDICATED.



SECTION "B-B"

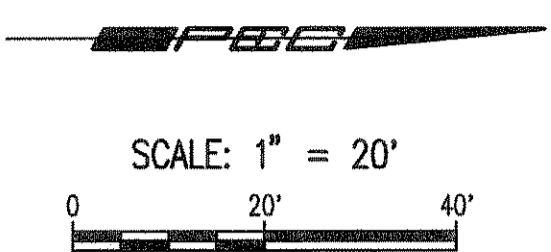
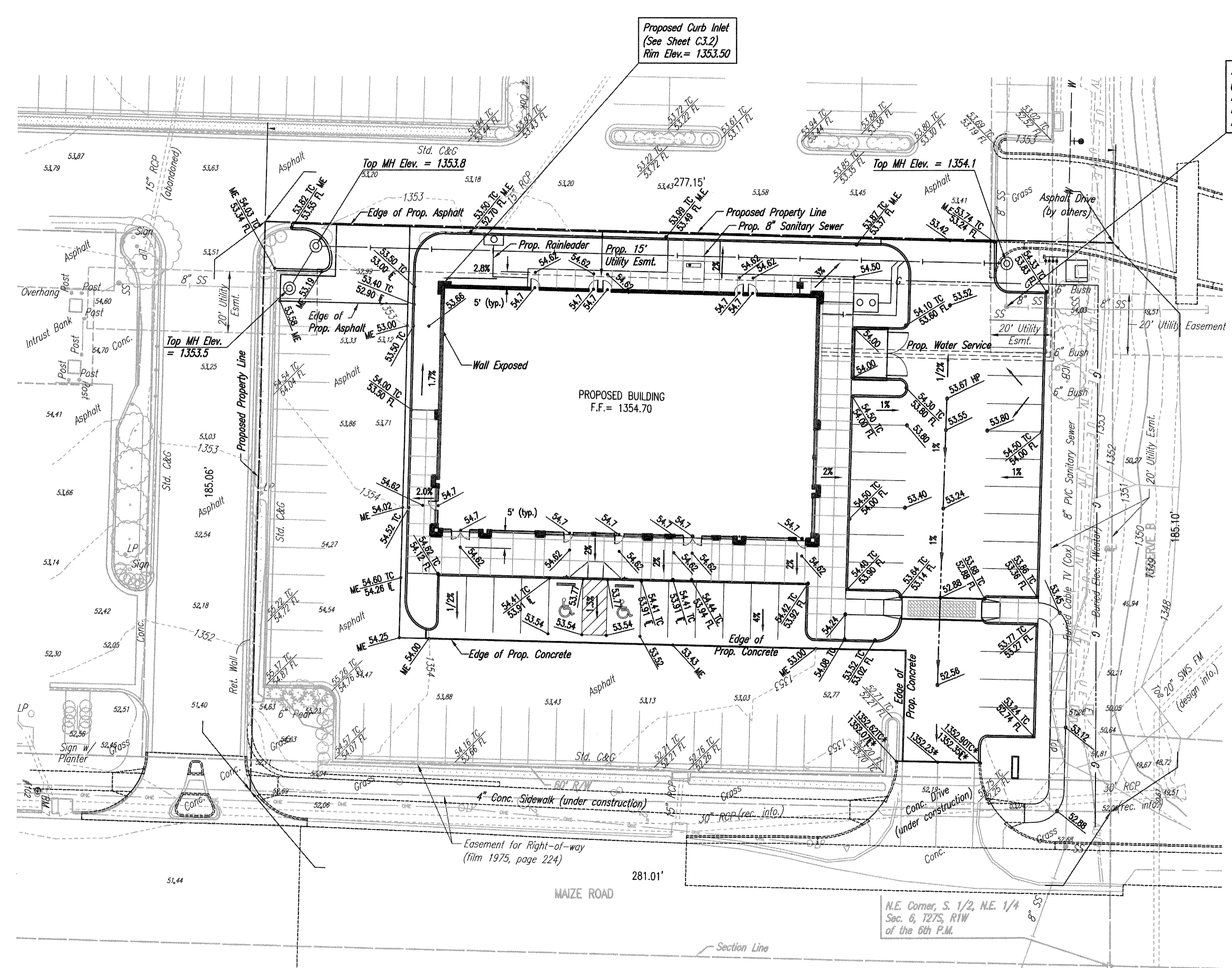


SECTION "D-D"

Sheet 01-11-2014, 8:08:34 AM, by: CSI
 Plot Scale: 1:1 04-09-2014, 10:48:28 AM, by: KURTIS DEKAT
 U:\Wichita-Civil\2014\14059\000\Wum\Drawings\PROV\14059-000-PPD-C3.3-TYPE 1 CURB INLET



STANDARD TYPE 1 CURB INLET 5'-0" OR 10'-0" OPENING		
CITY ENGINEER GARY JANZEN, P.E.		
PROJECT NUMBER 0222 PPD	OCA NUMBER (607861)	DATE 11/2010
CITY ENGINEER'S OFFICE CITY HALL - SEVENTH FLOOR 455 NORTH MAIN STREET WICHITA, KANSAS 67202-1620 (316) 268-4501		DESIGN DRAWN SHEET C3.3



- LEGEND**
- 53.20 EXISTING SPOT ELEVATION
 - 53.60 PROPOSED PAVEMENT ELEVATION (+ 1300 = NAVD88 ELEVATION)
 - 50.3 PROPOSED GROUND ELEVATION (+ 1300 = NAVD88 ELEVATION)
 - 1350 EXISTING MAJOR CONTOUR
 - 1351 EXISTING MINOR CONTOUR
 - 1350 PROPOSED MAJOR CONTOUR
 - 1351 PROPOSED MINOR CONTOUR
 - VALLEY
 - FLOW
 - * = MAIZE ROAD DESIGN
 - HP = HIGH POINT
 - TC = TOP OF CURB
 - FL = FLOW LINE
 - TW = TOP OF WALL
 - ME = MATCH EXISTING CONTRACTOR SHALL VERIFY ALL EXISTING ELEVATIONS AND REPORT ALL DISCREPANCIES TO THE ENGINEER PRIOR TO CONSTRUCTION.

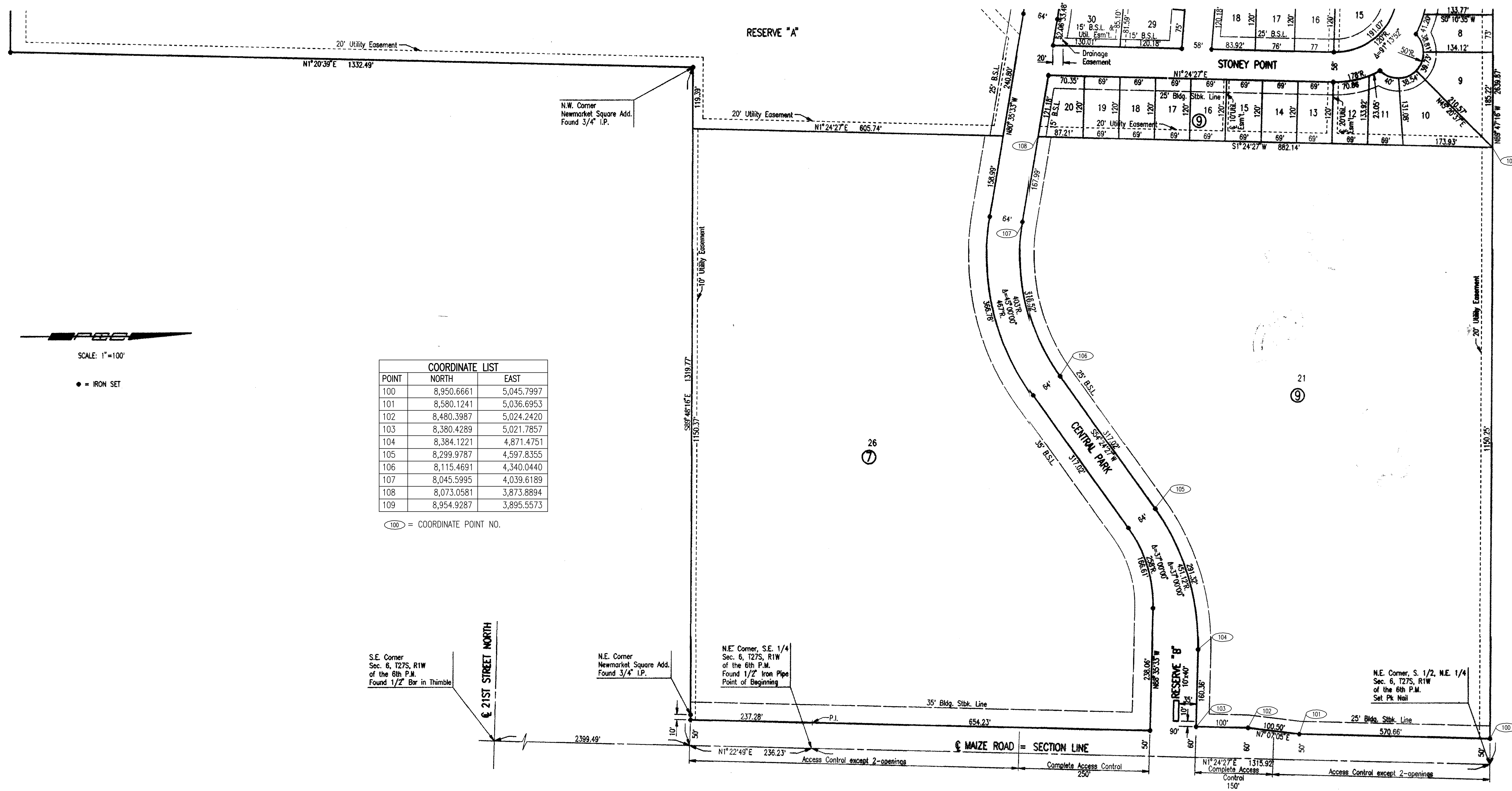
SEE C3.00 SERIES SHEETS FOR STORM WATER SEWER PLANS.

Saved: 04-10-2014 11:31:35 AM by: CSL
 Plot Scale: 1" = 20'-10-2014 11:32:21 AM by: CSL
 U:\Projects-Civil\2014\14059\Drawings\Site Civil\14059-C1.3-GRADING PLAN

	Revision	By	Date
	PRIVATE STORM WATER SEWER EXTENSION TARGET OUTPARCEL PHASE V NEWMARKET SQUARE GRADING PLAN GARY JANZEN, P.E. - CITY ENGINEER PRIVATE PROJECT NO. 0222 PPD (607861)		
	PROFESSIONAL ENGINEERING CONSULTANTS, P.A. 303 SOUTH TOPEKA WICHITA, KS 67202 316-262-2691 www.pec1.com		
	Designed by	Job No.	Shr.
Drawn by	Date	Sht. C1.3 of 8	

EVERGREEN

AN ADDITION TO WICHITA, SEDGWICK COUNTY, KANSAS



SCALE: 1"=100'

● = IRON SET

COORDINATE LIST		
POINT	NORTH	EAST
100	8,950.6661	5,045.7997
101	8,580.1241	5,036.6953
102	8,480.3987	5,024.2420
103	8,380.4289	5,021.7857
104	8,384.1221	4,871.4751
105	8,299.9787	4,597.8355
106	8,115.4691	4,340.0440
107	8,045.5995	4,039.6189
108	8,073.0581	3,873.8894
109	8,954.9287	3,895.5573

100 = COORDINATE POINT NO.

S.E. Corner Sec. 6, T27S, R1W of the 6th P.M. Found 1/2" Bar in Thimble

N.E. Corner Newmarket Square Add. Found 3/4" I.P.

N.E. Corner, S.E. 1/4 Sec. 6, T27S, R1W of the 6th P.M. Found 1/2" Iron Pipe Point of Beginning

N.E. Corner, S. 1/2, N.E. 1/4 Sec. 6, T27S, R1W of the 6th P.M. Set Pk Nail

21ST STREET NORTH

MAIZE ROAD = SECTION LINE


Access Control except 2-openings

Complete Access Control 250'

Complete Access Control 150'

FOR INFORMATION ONLY

Sowed 03-13-2014 8:10:33 AM by CSI
 Plot Scale 1:1 04-09-2014 10:52:12 AM by KURTIS DEKAT
 U:\Wichita-Civil\2014\14059\000\Drawings\PPD\14059-000-PPD-C2.1-PLAT

No.	Revision	By	Date
PRIVATE STORM WATER SEWER EXTENSION TARGET OUTPARCEL PHASE V NEWMARKET SQUARE PLAT GARY JANZEN, P.E. - CITY ENGINEER PRIVATE PROJECT NO. 0222 PPD (607861)			
 PEC		PROFESSIONAL ENGINEERING CONSULTANTS, P.A. 303 SOUTH TOPEKA WICHITA, KS 67202 316-262-2691 www.pec1.com	
Designed by	JEH	Job No.	35-14059-000-6364
Drawn by	CSL, JAN	Date	FEBRUARY 2014
			SH. C2.1 of 7