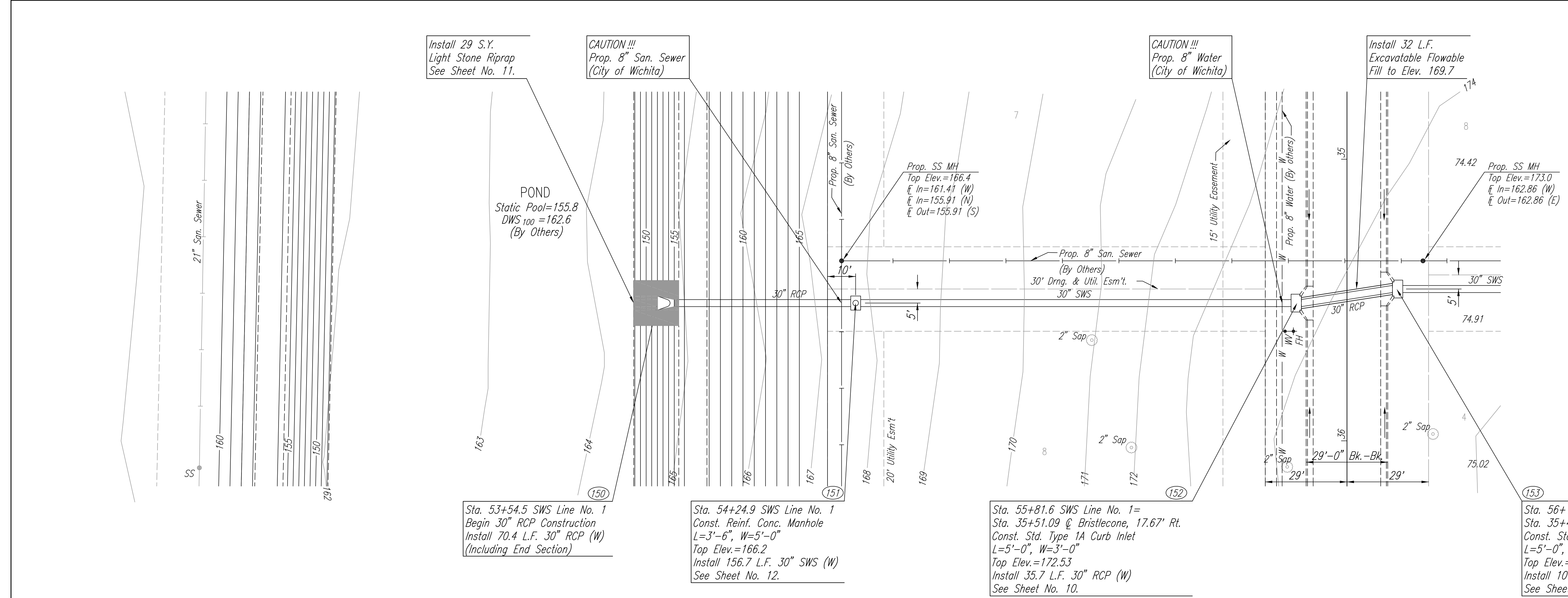
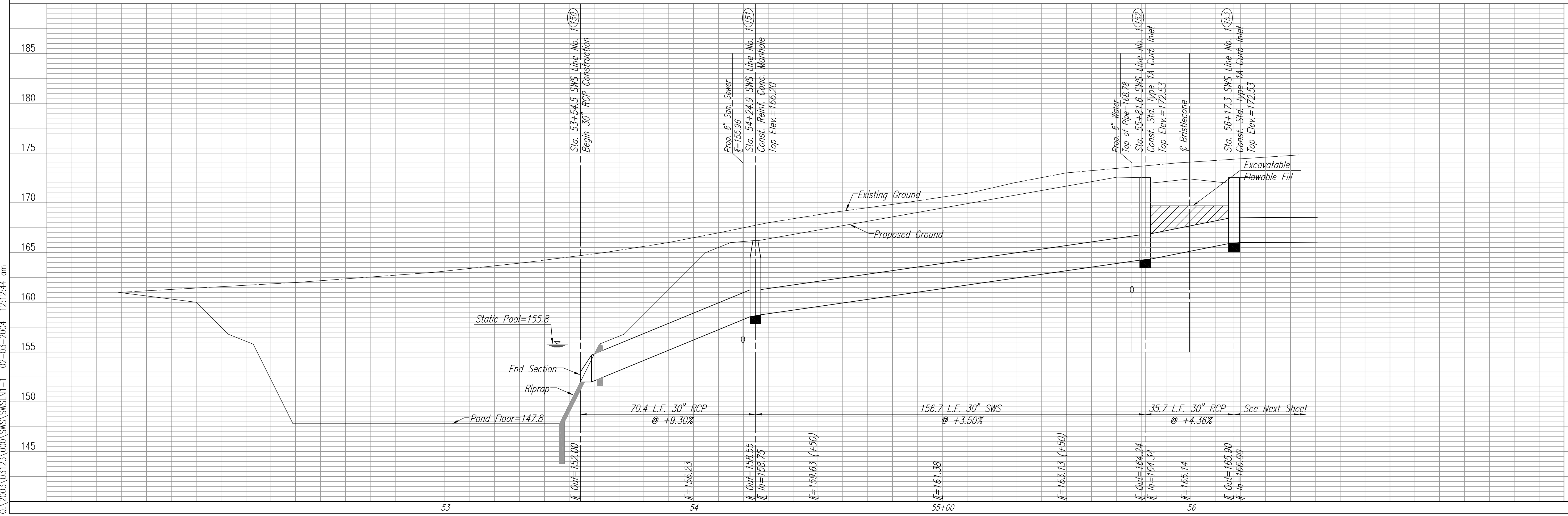


PROFILE	CHECKED	CHECKED
BY		
DATE		

DSNR: BOB OPER: BJS SCALE: 1"=20.00  
 Q:\2003\03123\000\SWS\SWSLN1-1 02-03-2004 12:12:44 am



Install 29 S.Y. Light Stone Riprap See Sheet No. 11.

CAUTION !!! Prop. 8" San. Sewer (City of Wichita)

CAUTION !!! Prop. 8" Water (City of Wichita)

Install 32 L.F. Excavatable Flowable Fill to Elev. 169.7

Sta. 53+54.5 SWS Line No. 1 Begin 30" RCP Construction Install 70.4 L.F. 30" RCP (W) (Including End Section)

Sta. 54+24.9 SWS Line No. 1 Const. Reinf. Conc. Manhole L=3'-6", W=5'-0" Top Elev.=166.2 Install 156.7 L.F. 30" SWS (W) See Sheet No. 12.

Sta. 55+81.6 SWS Line No. 1= Sta. 35+51.09 @ Bristlecone, 17.67' Rt. Const. Std. Type 1A Curb Inlet L=5'-0", W=3'-0" Top Elev.=172.53 Install 35.7 L.F. 30" RCP (W) See Sheet No. 10.

Sta. 56+17.3 SWS Line No. 1= Sta. 35+46.09 @ Bristlecone, 17.67' Lt. Const. Std. Type 1A Curb Inlet L=5'-0", W=3'-0" Top Elev.=172.53 Install 101.4 L.F. 30" SWS (W) See Sheet No. 10.

SWS COORDINATES		
POINT NO.	N	E
150	9279.4439	3757.1249
151	9279.7048	3686.7254
152	9280.2855	3530.0265
153	9275.4136	3494.6682

SCALE: 1"=20'

EVERGREEN 4TH STORM WATER SEWER NO. 589

**SWS LINE NO. 1**

JAMES L. ARMOUR, P.E. - ACTING CITY ENGINEER  
 CITY OF WICHITA PROJECT NO. 468-83640

Professional Engineering Consultants, P.A.  
 303 S. TOPEKA • WICHITA, KANSAS 67202  
 316-262-2691 • FAX 316-262-3003

Designed By: BDB  
 Drawn By: BJS  
 Job No.: 35-03123  
 Date: March 2003

Sheet 4 of 17