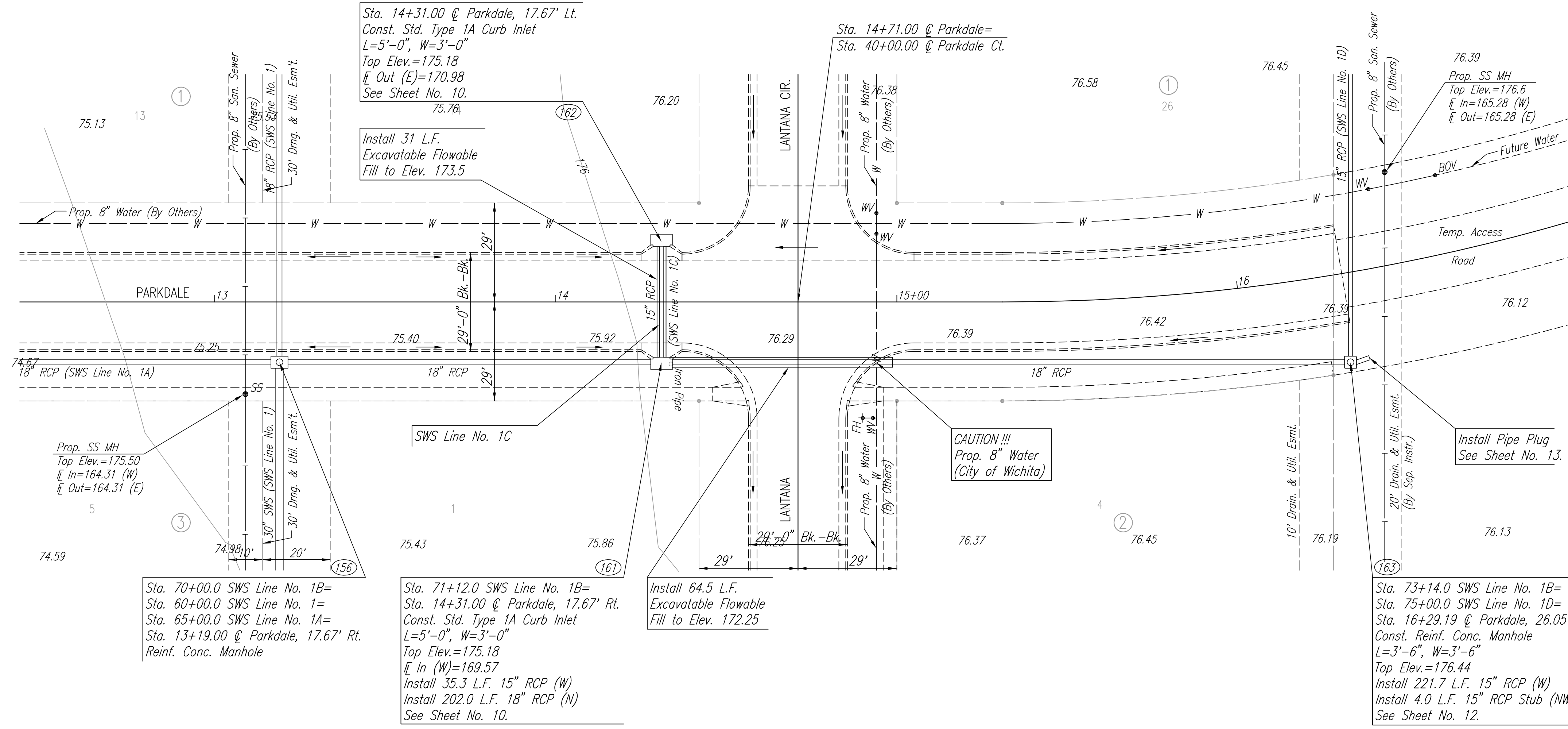
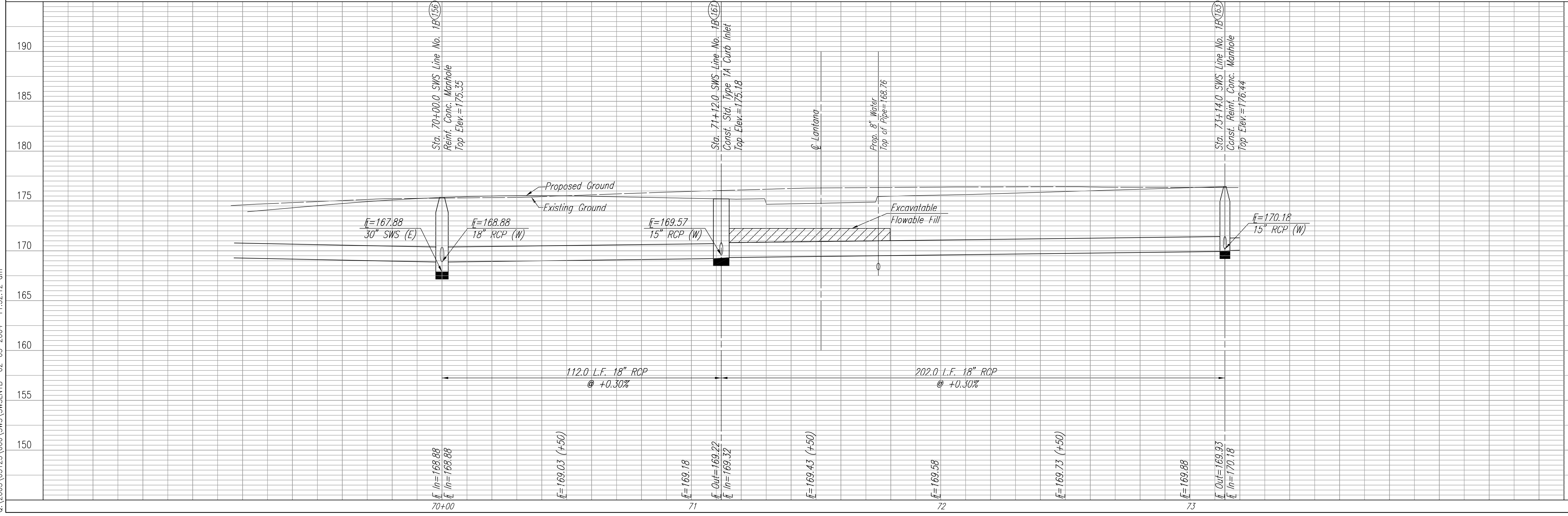


PROFILE	CHECKED	DATE
	CHECKED	

DSNR: BOB OPER: BJS SCALE: 1"=20.00
 Q:\2003\03123\000\SWS\SWSLN1B_02-05-2004 11:32:12 am



SWS COORDINATES		
POINT NO.	N	E
156	9276.8346	3112.0108
161	9388.8338	3112.4258
162	9388.9648	3077.0861
163	9590.8308	3113.1785

SCALE: 1"=20'

EVERGREEN 4TH
 STORM WATER SEWER NO. 589

SWS LINE NO. 1B & 1C

JAMES L. ARMOUR, P.E.—ACTING CITY ENGINEER
 CITY OF WICHITA PROJECT NO. 468-83640

Professional Engineering Consultants, P.A.
 303 S. TOPEKA • WICHITA, KANSAS 67202
 316-262-2691 • FAX 316-262-3003

Designed By: BOB
 Drawn By: BJS
 Job No.: 35-03123
 Date: March 2003

Sheet 8 of 17